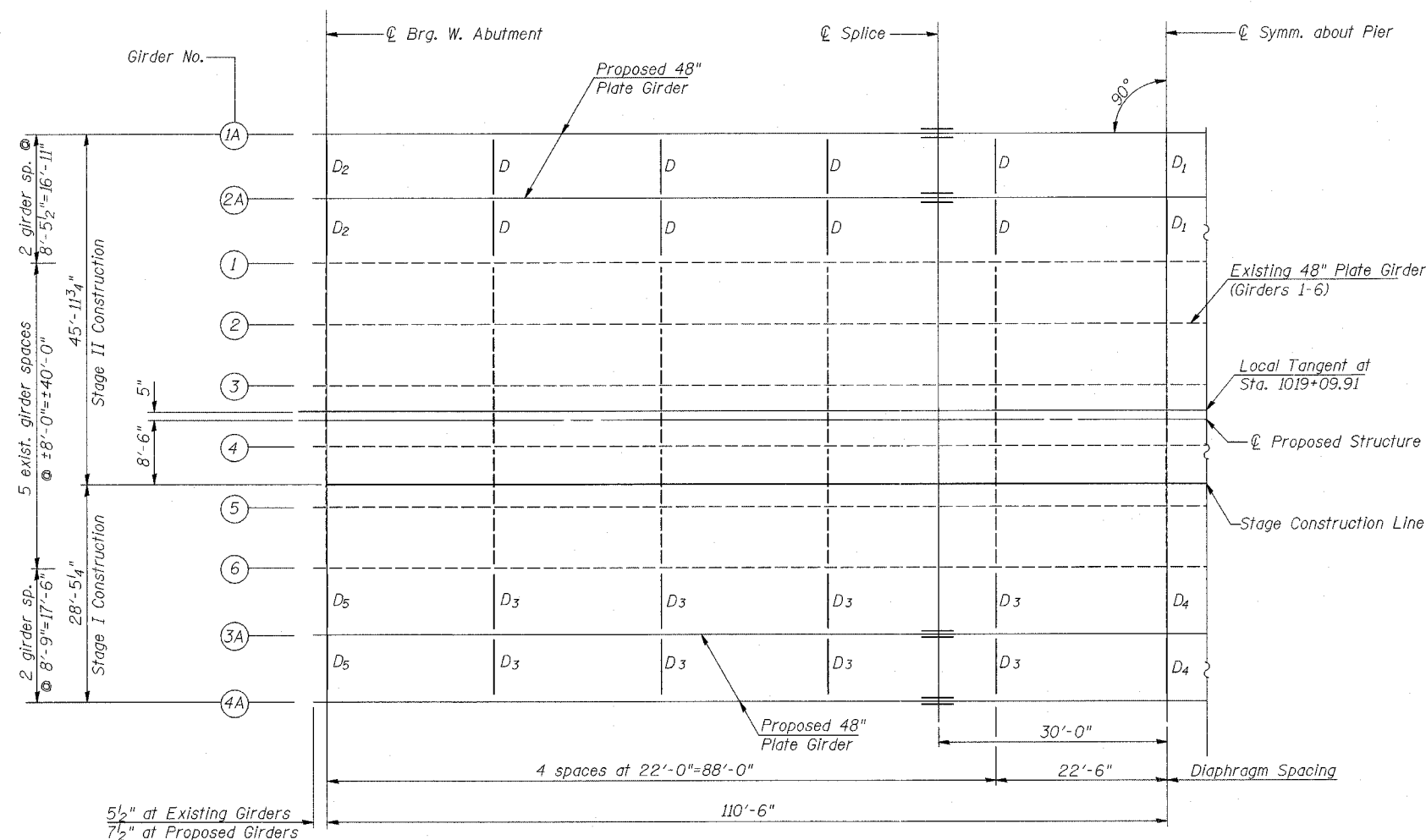


ROUTE NO.	SECTION	COUNTY	TOTAL SHEETS	SHEET NO.	SHEET NO. 12 26 SHEETS
F. A.P. RTE. 774	107BY-1	EFFINGHAM	273	212	
FED. ROAD DIST. NO. 7	ILLINOIS	FED. AID PROJECT-			

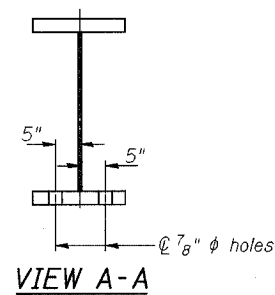
CONTRACT NO. 94827



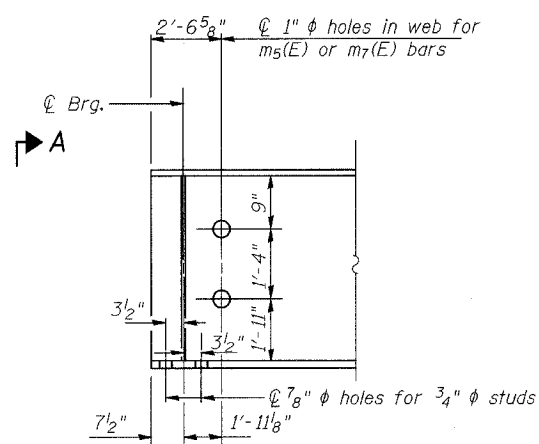
FRAMING PLAN

NOTE

Existing diaphragms along \bar{C} bearing at Abutments shall be cleaned and left in place. Cost of cleaning is included with Concrete Superstructure.

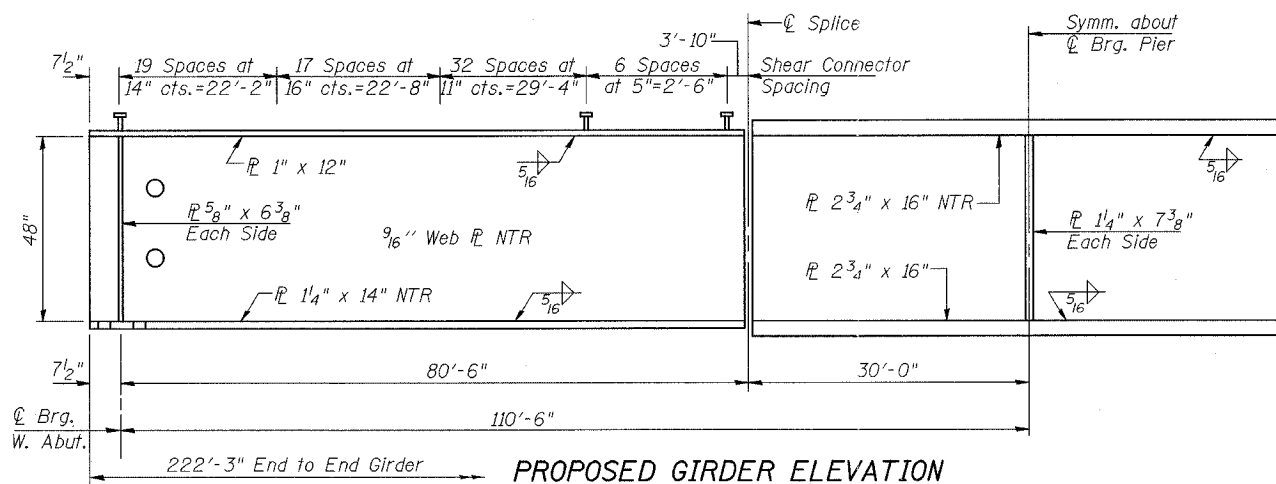


VIEW A-A



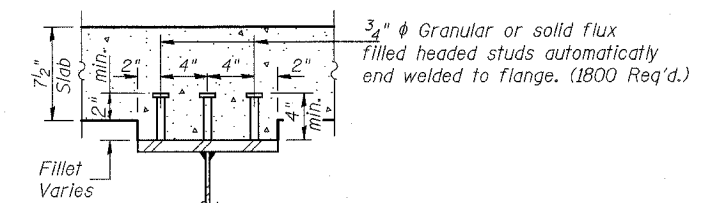
DETAIL AT ABUTMENT

Showing hole locations



PROPOSED GIRDER ELEVATION

"NTR" denotes plates to which notch toughness requirements are applicable.



SHEAR STUD DETAIL

Work this Sheet with Sheet 13 of 26.

SHEET TITLE STRUCTURAL STEEL		
PROJECT IL RTE. 32/33 OVER LITTLE WABASH RIVER OVERFLOW F.A.P. RTE. 774 SECTION 107BY-1 EFFINGHAM COUNTY STATION 1018+86.92 STRUCTURE NO. 025-0077	PROJECT NO. 02017	SCALE DATE
COOMBE-BLOXDORF P.C. Engineers / Land Surveyors Springfield, Illinois Design Firm License No. 184-002703	DRAWN BY TFG	CHECKED BY KPS/CME/MCB
	12	OF 26 SHTS