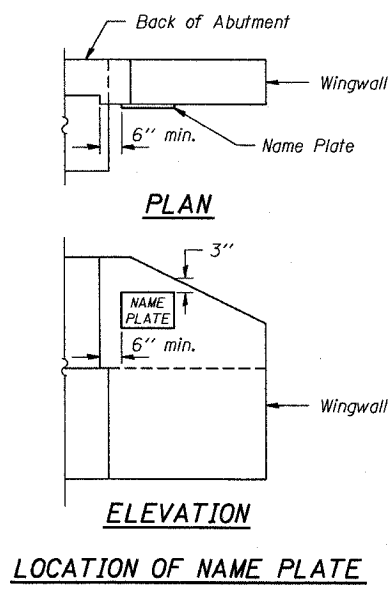


Material: Best quality brass or bronze.  
 Border & Lettering: Raised  $\frac{1}{8}$  inch. Square cut and not tapered. Top surface polished.  
 Fastenings: Four lugs at least three inches long, cast on back of plate.



Jul. 1 1995 15:19 1995 c:\plot\queue\queue3.saf res /usr/projects/bratdps/engr1.plt.f

Illinois Department of Transportation

PASSED November 1, 1995

*Greg J. Kasper*  
 Engineer of Bridge Design

APPROVED November 1, 1995

*Ralph E. Anderson*  
 Engineer of Bridges and Structures

ISSUED 7-4-95

NAME PLATE  
 STANDARD CN