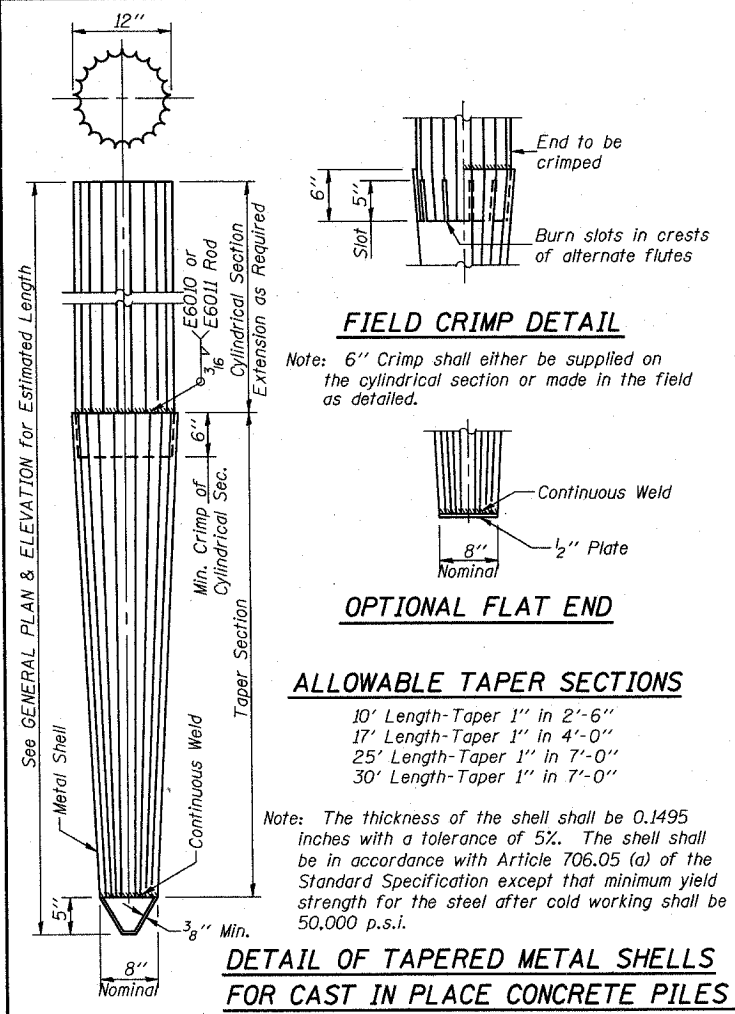


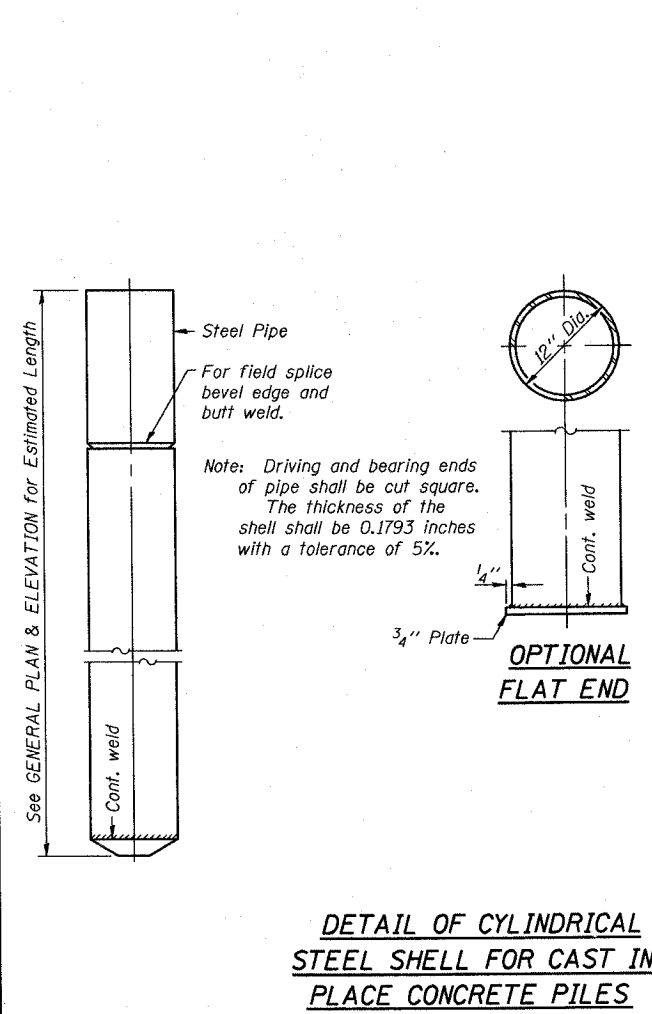
Handling: For Pile lengths up to 45' use two slings placed at a distance of 0.21L from each end. For Piles longer than 45', use three slings placed at a distance of 0.12L from each end and at mid point of pile.

**DETAIL OF PRECAST CONCRETE PILES**



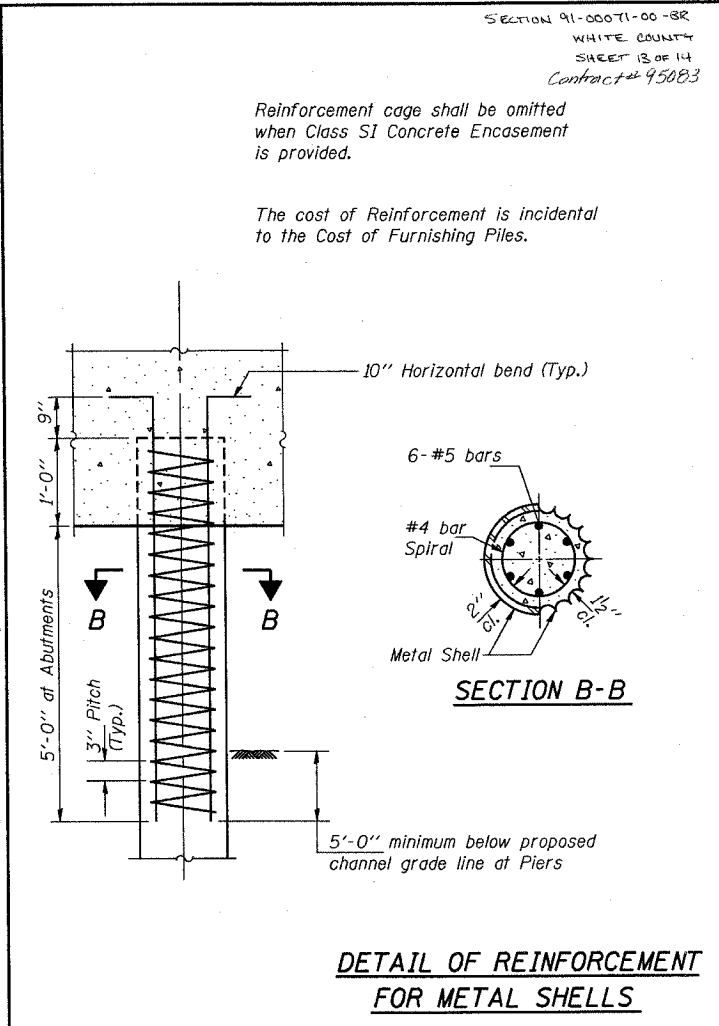
Note: The thickness of the shell shall be 0.1495 inches with a tolerance of 5%. The shell shall be in accordance with Article 706.05 (a) of the Standard Specification except that minimum yield strength for the steel after cold working shall be 50,000 p.s.i.

**DETAIL OF TAPERED METAL SHELLS FOR CAST IN PLACE CONCRETE PILES**



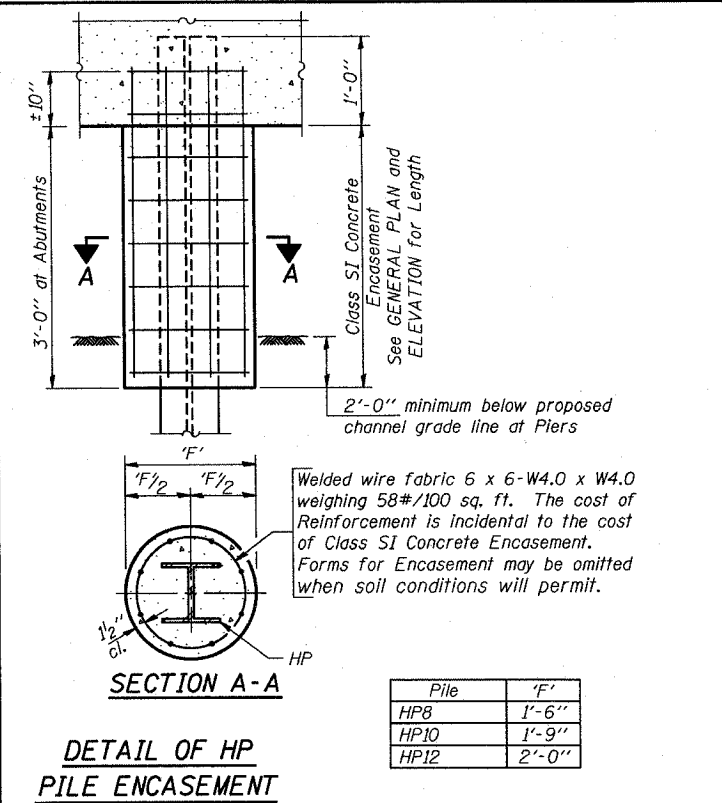
Note: Driving and bearing ends of pipe shall be cut square. The thickness of the shell shall be 0.1793 inches with a tolerance of 5%.

**DETAIL OF CYLINDRICAL STEEL SHELL FOR CAST IN PLACE CONCRETE PILES**



Reinforcement cage shall be omitted when Class SI Concrete Encasement is provided.  
The cost of Reinforcement is incidental to the Cost of Furnishing Piles.

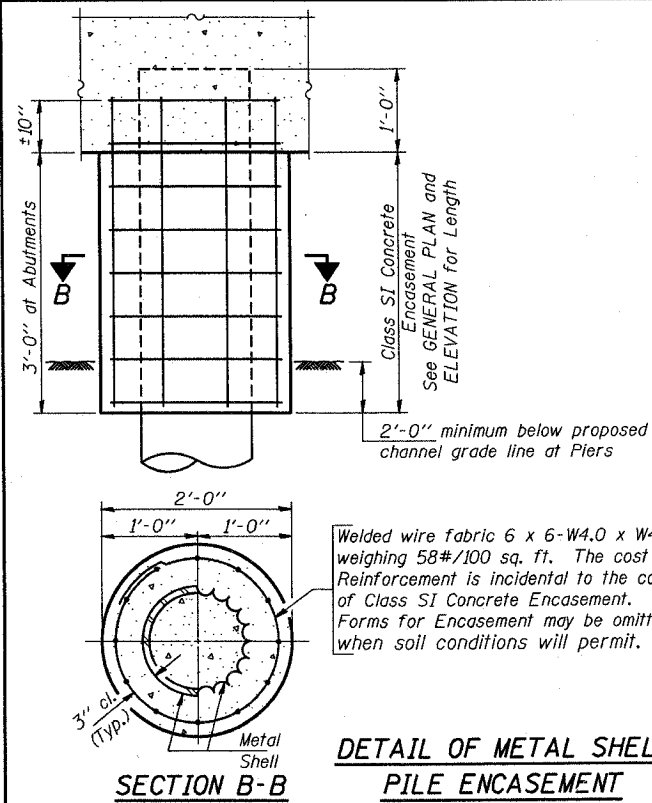
**DETAIL OF REINFORCEMENT FOR METAL SHELLS**



Welded wire fabric 6 x 6-W4.0 x W4.0 weighing 58#/100 sq. ft. The cost of Reinforcement is incidental to the cost of Class SI Concrete Encasement. Forms for Encasement may be omitted when soil conditions will permit.

Pile	'F'
HP8	1'-6"
HP10	1'-9"
HP12	2'-0"

**DETAIL OF HP PILE ENCASEMENT**



Welded wire fabric 6 x 6-W4.0 x W4.0 weighing 58#/100 sq. ft. The cost of Reinforcement is incidental to the cost of Class SI Concrete Encasement. Forms for Encasement may be omitted when soil conditions will permit.

**DETAIL OF METAL SHELL PILE ENCASEMENT**

**QUANTITIES/LIN. FT. OF ENCASEMENT (STEEL PILES)**

Pile Size	Item	Quantity
HP8	Class SI Concrete Encasement	0.063 C.Y.
HP10	Class SI Concrete Encasement	0.086 C.Y.
HP12	Class SI Concrete Encasement	0.112 C.Y.

**(METAL SHELL PILES)**

Pile Size	Item	Quantity
12" Dia.	Class SI Concrete Encasement	0.087 C.Y.

<b>PILE DETAILS</b>
<b>STANDARD CX-1</b>

Illinois Department of Transportation  
 PASSED November 1, 1995  
 Approved November 1, 1995  
 Engineer of Bridges and Structures

7 0910218 1995 c:\p\lot\queue\queue3.qcf ray /usr/project/bst0pde/engine.rtf