

INDEX OF SHEETS

SHEET NO.	DESCRIPTION
1	TITLE SHEET
2-3	SUMMARY OF QUANTITIES, TYPICAL SECTIONS, GENERAL NOTES & MISC. DETAILS
4-9	EROSION CONTROL PLAN
10-23	PLAN & PROFILE SHEETS
24-57	ROADWAY CROSS SECTIONS

**THE FOLLOWING STANDARDS
ARE A PART OF THESE PLANS AND
ARE INCLUDED AFTER SHEET NO. 57**

000001-04	STANDARD SYMBOLS, ABBREVIATIONS & PATTERNS
280001-02	TEMPORARY EROSION CONTROL SYSTEMS
406201	MAILBOX TURNOUT
542301	PRECAST REINFORCED CONCRETE FLARED END SECTION
542306	PRECAST REINFORCED CONCRETE ELLIPTICAL FLARED END SECTION
542401	METAL END SECTION FOR PIPE CULVERTS
542406	METAL END SECTIONS FOR PIPE ARCHES
666001	RIGHT OF WAY MARKERS
702001-05	TRAFFIC CONTROL DEVICES
720006	SIGN PANEL ERECTION DETAILS
720011	METAL POSTS FOR SIGNS, MARKERS & DELINEATORS
729001	APPLICATIONS OF TYPES A & B METAL POSTS (FOR SIGNS & MARKERS)
B.L.R. 21-6	TYPICAL APPLICATION OF TRAFFIC CONTROL DEVICES FOR CONSTRUCTION ON RURAL LOCAL HIGHWAYS
B.L.R. 22-4	TYPICAL APPLICATION OF TRAFFIC CONTROL DEVICES FOR CONSTRUCTION ON RURAL LOCAL HIGHWAYS (TWO-LANE TWO-WAY RURAL TRAFFIC) (ROAD CLOSED TO THRU TRAFFIC)

PLAN	1" = 50'	
PROFILE	1" = 50'	
PROFILE VERT.	1" = 5'	
CROSS SECTIONS	1" = 5'	

DESIGN DESIGNATION:
DESIGN SPEED: 40 MPH
HIGHWAY CLASS - RURAL MAJOR COLLECTOR
CURRENT A.D.T. = 300
CONTRACT NO. 95414

J.U.L.I.E.
JOINT UTILITY LOCATION INFORMATION FOR EXCAVATION
1-800-892-0123

STATE OF ILLINOIS

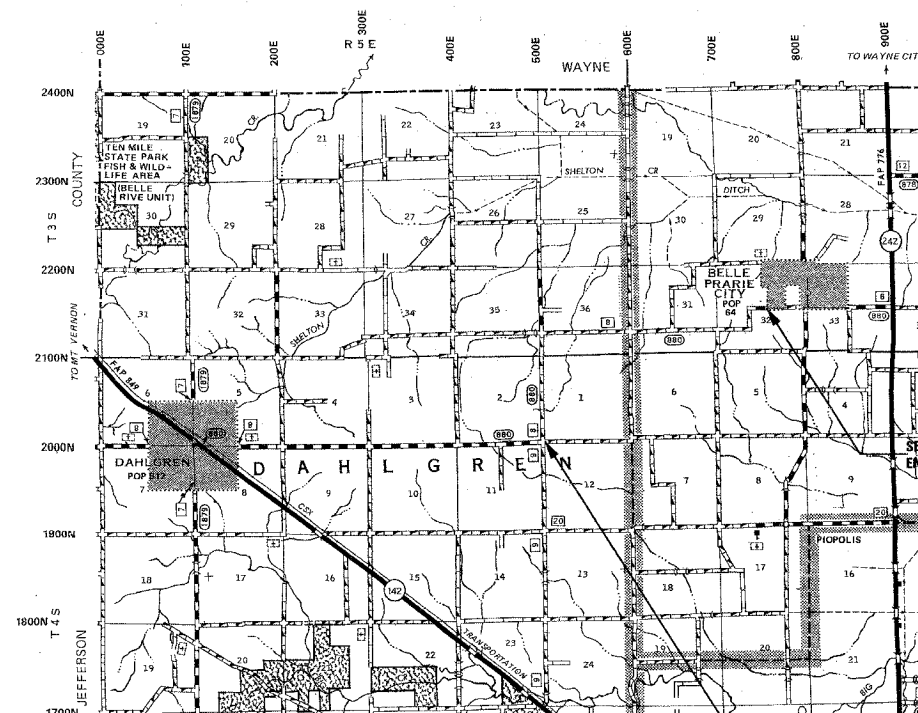
DEPARTMENT OF TRANSPORTATION

DIVISION OF HIGHWAYS

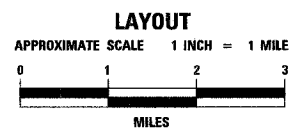
**PLANS FOR PROPOSED
FEDERAL-AID S.T.R.P. PROJECT**

F.A.S. 880 (CH 8) SECTION 02-00091-00-FP HAMILTON COUNTY

PROJECT SR-880(104) JOB NO. C-97-061-04



SECTION 02-00091-00-FP
ENDS STATION 202+50

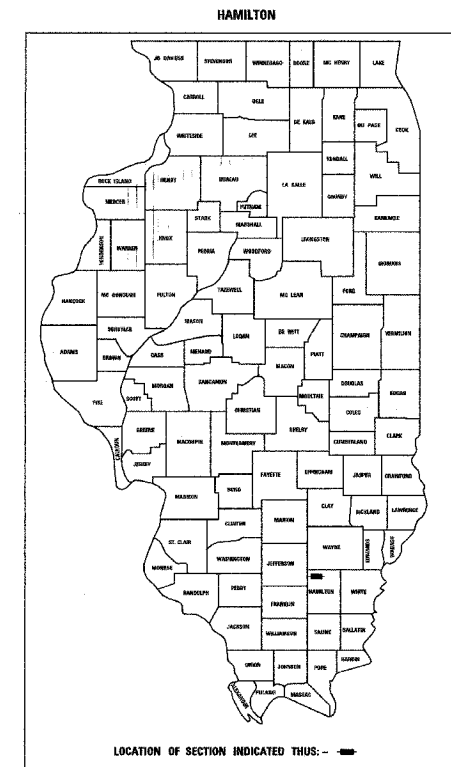


GROSS LENGTH	20,200 FT	3.826 MILES
OMISSION	0 FT	0.000 MILES
NET LENGTH	20,200 FT	3.826 MILES

THE ACCEPTANCE OF THIS PROJECT IS BASED
ON THE MINIMUM DESIGN CRITERIA FOR A
FEDERAL-AID-3-R TYPE IMPROVEMENT ON
THE COUNTY HIGHWAY SYSTEM.

Maureen E. Kasel
DISTRICT ENGINEER OF LOCAL ROADS & STREETS

STATE OF ILLINOIS DEPARTMENT OF TRANSPORTATION	
PASSED	<i>Maureen E. Kasel</i> 2/17 20 05 DISTRICT ENGINEER OF LOCAL ROADS & STREETS
APPROVED	<i>Christina M. Reed</i> 2/28 20 05 DISTRICT ENGINEER OF HIGHWAYS / REGION 4 ENGINEER



LOCATION OF SECTION INDICATED THUS: -

PLANS
REVIEWED & APPROVED

Kevin Phillips
COUNTY ENGINEER

2-8-05
DATE

F.A.S.	SECTION	COUNTY	TOTAL SHEETS	SHEET NO.
880	02-00091-00-FP	HAMILTON	57	1
FED. ROAD DIST. NO. 7		ILLINOIS	BELLE PRAIRIE ROAD	
LEC JOB # H021025HM		CONTRACT NO. 95414		

323 W. 3RD ST.
P.O. BOX 160
MT. CARMEL, IL
62863

PHONE:
(618)-262-8651
FAX:
(618)-263-3327

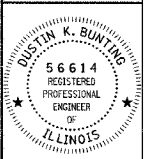
405 W. STATE ST.
SUITE 1
FRINGETON, IN
47870

PHONE:
(812)-386-7611
FAX:
(812)-385-2812

LAMAC
ENGINEERING CO.

PROFESSIONAL
DESIGN FIRM
LAND SURVEY &
PROFESSIONAL
ENGINEERING
CORPORATION

184-000887
(62-032435)(35-002769)



DUSTIN K. BUNTING

NAME
Dustin K. Bunting
SIGNATURE

02-05-05

DATE

11-30-05

EXPIRES

F.A.S. 880 (CH 8)
BELLE PRAIRIE ROAD
SECTION 02-00091-00-FP
HAMILTON COUNTY, ILLINOIS

SHEET TITLE:

TITLE SHEET

SCALE: VARS

BY: DKB

DATE: 04/98

REV:

1 OF 57

SHEETS

SHEET NO.

1