

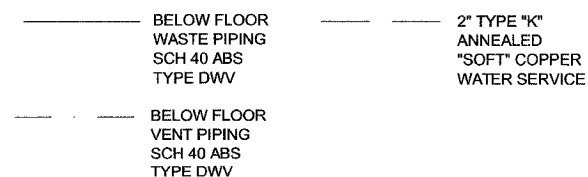
FLOOR DRAIN DETAIL

BELOW FLOOR PIPING - KEY NOTES

1. 4" CLEAN OUT TO GRADE.
2. 2" FLOOR DRAIN. (14" DIA BLOCKOUT)
3. 2" VENT PIPES EXTENDED 12" ABOVE FINISHED FLOOR LEVEL, PROVIDE TEST PLUG. (8" DIA BLOCKOUT)
4. 4" WASTE PIPE EXTENDED 12" ABOVE FINISHED FLOOR LEVEL, PROVIDE TEST PLUG. (1'-6" x 4'-0" BLOCKOUT)
5. 2" TYPE K ANNEALED "SOFT" COPPER WATER SERVICE EXTENDED 12" ABOVE FINISHED FLOOR LEVEL, PROVIDE CAP AT END. (1'-6" x 4'-0" BLOCKOUT)
6. 3'-6" MIN. BURY.
7. 3'-6" MIN. BURY, PROVIDE WITH TRACER WIRE CONNECTED MIN. 6" ABOVE FLOOR IN BUILDING TO NEW CURB STOP.
8. ELECTRICAL STUB UP, (6" DIA BLOCKOUT)

FLOOR DRAIN BLOCKOUTS & BELOW FLOOR PIPING
3/8"=1'-0"

PIPING LEGEND



NOTE: PLUMBING COMPONENTS ARE SHOWN FOR GENERAL ARRANGMENT ONLY. CONTRACTOR SHALL SUBMIT DETAILED PLANS FOR APPROVAL PRIOR TO ORDERING BUILDING.

PRODUCT OR BRAND NAMES AR SHOWN TO ESTABLISH MINIMUM QUALITY REQUIREMENT, PRODUCTS OR BRANDS OF EQUAL QUALITY ARE ACCEPTABLE.

REVISIONS		ILLINOIS DEPARTMENT OF TRANSPORTATION	
NAME	DATE		
		CLIFTON TERRACE PARK COMFORT STATION FLOOR DRAIN LOCATIONS & BELOW FLOOR PIPING	
SCALE: VERT. 3/8" = 1'-0"		DRAWN BY	DWH
HORIZ. 3/8" = 1'-0"		CHECKED BY	DWH
DATE		FEBRUARY 9, 2005	