

F.A.H. RTE.	SECTION	COUNTY	TOTAL SHEETS	SHEET NO.
9097	02-00183-00-TL	MADISON	16	1
FED. ROAD DIST. NO.	ILLINOIS	FED. AID PROJECT		

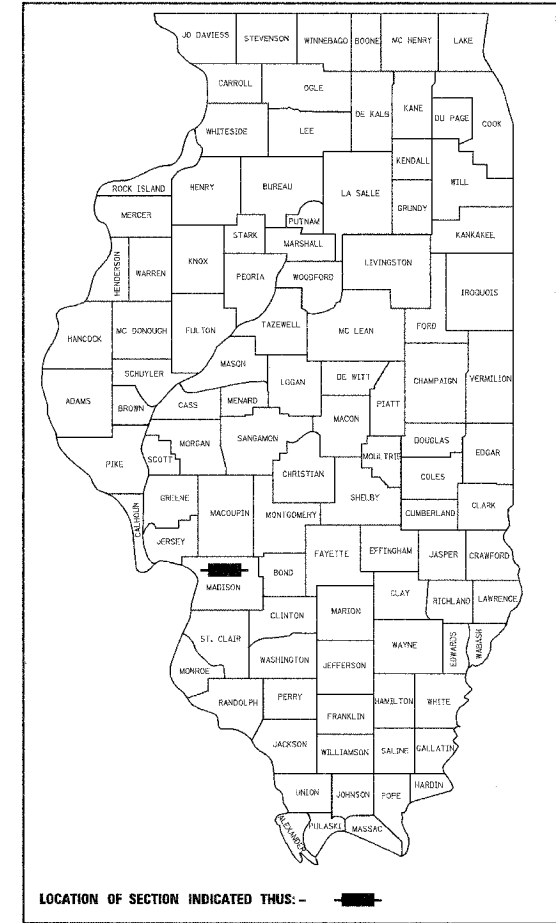
CONTRACT NO. 97243

STATE OF ILLINOIS
DEPARTMENT OF TRANSPORTATION
DIVISION OF HIGHWAYS

HAZARD ELIMINATION SAFETY PROGRAM
CITY OF GRANITE CITY

FAU 9097 (MADISON AVENUE)
SECTION NO. 02-00183-00-TL
PROJECT NO. HS-9097 (011)
MADISON COUNTY
JOB NO. C-98-322-03

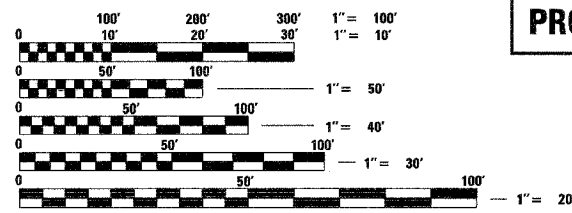
SCALES
 PLAN 1" = 20'
 PROFILE HORIZ. 1" = 20'
 PROFILE VERT. 1" = 5'
 CROSS SECTIONS 1" = 10' HORIZ.
 1" = 5' VERT.



BY	DATE
FINAL SURVEYED	
SURVEY PLOTTED	
NOTE BOOK TEMPLATE	
AREAS CHECKED	
NO.	

FOR INDEX OF SHEETS, SEE SHEET NO. 2

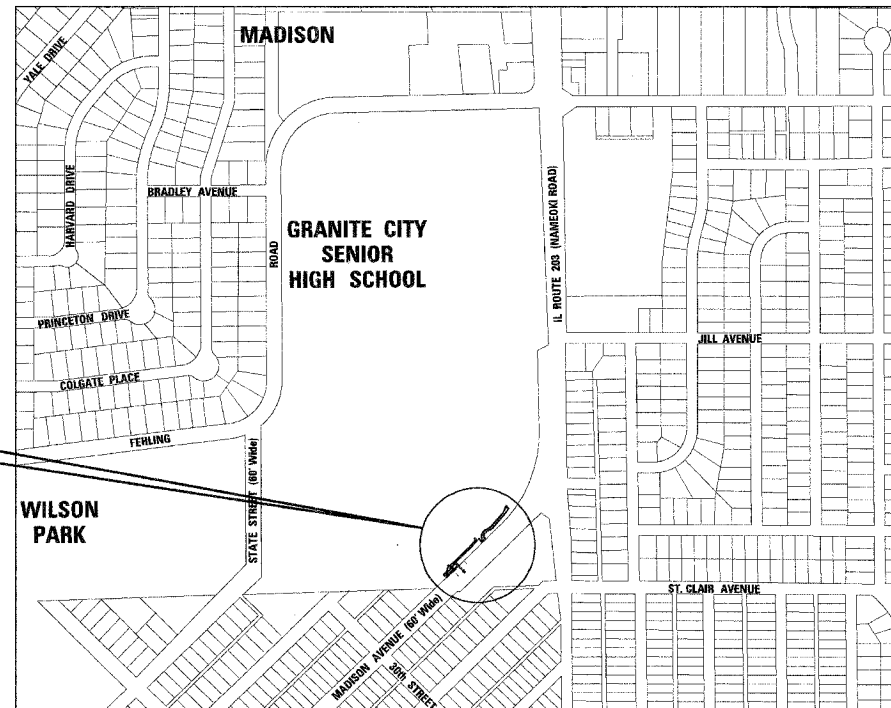
BY	DATE
ORIGINAL SURVEYED	
SURVEY PLOTTED	
NOTE BOOK TEMPLATE	
AREAS CHECKED	
NO.	



FULL SIZE PLANS HAVE BEEN PREPARED USING STANDARD ENGINEERING SCALES, REDUCED SIZED PLANS WILL NOT CONFORM TO STANDARD SCALES, IN MAKING MEASUREMENTS ON REDUCED PLANS, THE ABOVE SCALES MAY BE USED.

J.U.L.I.E.
JOINT UTILITY LOCATION INFORMATION FOR EXCAVATION
1-800-892-0123

PROJECT LOCATION



LOCATION MAP
SCALE: 1" = 400'
NET LENGTH OF PROJECT: N/A
SECTION 8, T. 3 N., R. 9 W., 3RD P.M.

DESIGN DESIGNATION
FUNCTIONAL CLASSIFICATION: MINOR ARTERIAL
ADT: 15,300 (2004) 18,669 (2024)
DHV (2024): 1867
DESIGN SPEED: 30 MPH



Expires 11-30-05

Brian F. Kulick 12/21/04
BRIAN F. KULICK, P.E. No. 49936 DATE
(Printed by Authority of the State of Illinois)
Job No. 020208

STATE OF ILLINOIS
DEPARTMENT OF TRANSPORTATION
DIVISION OF HIGHWAYS

APPROVED *Dec 21 20 04*
Carol J. [Signature]
LOCAL AGENCY OFFICIAL

PASSED *2-8 20 05*
Jennifer [Signature]
LOCAL ROADS AND STREETS ENGINEER

APPROVED *2-8 20 05*
Mary C. Lamie
MARY C. LAMIE, P.E.
DEPUTY DIRECTOR OF HIGHWAYS
REGION FIVE ENGINEER

Juneau Associates, Inc. P.C.
CONSULTING ENGINEERS AND LAND SURVEYORS

2100 State Street, P.O. Box 1325
Granite City, Illinois 62040
Phone: (618) 937-1400 / (618) 452-5535
Fax: (618) 452-5541

100 North Research Drive
Edwardsville, Illinois 62025
Phone: (618) 655-0900 / (618) 659-0800
Fax: (618) 659-0941

F.A.U. RTE.	SECTION	COUNTY	TOTAL SHEETS	SHEET NO.
9097	02-00183-00-TL	MADISON	16	2
FED. ROAD DIST. NO.		ILLINOIS	FED. AID PROJECT	

CONTRACT NO. 97243

LEGEND

	EVERGREEN (5" DIA)		FOUND CONCRETE MONUMENT		WATER LINE
	DECIDUOUS (8" DIA)		WATER METER		GAS LINE
	EVERGREEN SHRUB		GAS METER		OVERHEAD ELECTRIC LINE
	SHRUB		WATER VALVE		TELEPHONE LINE
	FIRE HYDRANT		GAS VALVE		CABLE TV LINE
	SIGN	(TBA) TO BE ADJUSTED			STORM SEWER
	BALLORD	(TBR) TO BE REMOVED			SANITARY SEWER
	POWER POLE	(TBR&R) TO BE REMOVED & RELOCATED			LIGHT POLE
	POWER POLE WITH DOWN GUY	(TBR&RBO) TO BE REMOVED & RELOCATED BY OTHERS			STORM SEWER MANHOLE
	FENCE	DND DO NOT DISTURB			SANITARY SEWER MANHOLE
	BENCH MARK	— P — PROPERTY LINE			CATCH BASIN
	DITCH/SWALE	— — — — — EXIST R.O.W. LINE			INLET
	EXISTING MAILBOX	⊗ WOOD POST			

INDEX OF SHEETS

SHEET NUMBER	DESCRIPTION
1	COVER SHEET
2	INDEX OF SHEETS, HIGHWAY STANDARDS, GENERAL NOTES, AND LEGEND
3	SUMMARY OF QUANTITIES
4	TYPICAL SECTIONS
5	QUANTITY SCHEDULES
6	ADVANCED WARNING SIGNS
7-8	PLAN AND PROFILE SHEETS
9-10	REMOVAL SHEETS
11	GRADING AND PAVING PLAN
12-14	TRAFFIC SIGNAL SHEETS
15	PAVEMENT MARKING SHEET
16	MISCELLANEOUS DETAIL SHEETS

STANDARDS

STD. NO.	
000001-04	702001-05
420001-05	720001
420101-02	720006
420701-01	780001-01
424001-03	805001
602301	814001
604006-02	857001
606001-02	877001-02
701606-04	878001-03
701801-03	880006

GENERAL NOTES:

WHERE SECTION OR SUB-SECTION MARKERS ARE ENCOUNTERED, THE ENGINEER SHALL BE NOTIFIED BEFORE SUCH MONUMENTS ARE REMOVED OR COVERED UP. THE CONTRACTOR SHALL PROTECT AND CAREFULLY PRESERVE ALL PROPERTY MARKERS AND MONUMENTS UNTIL AN AUTHORIZED SURVEYOR OR AGENT HAS WITNESSED OR OTHERWISE REFERENCED THEIR LOCATIONS.

ILLINOIS STATE LAW REQUIRES A 48-HR NOTICE BE GIVEN TO ALL UTILITIES BEFORE DIGGING. FIELD MARKING OF FACILITIES MAY BE OBTAINED BY CONTACTING J.U.L.L.E. OR FOR NON-J.U.L.L.E. MEMBERS, THE UTILITY COMPANY DIRECTLY. AGENCIES KNOWN TO HAVE FACILITIES WITHIN THE PROJECT AREA ARE AS FOLLOWS

- CITY OF GRANITE CITY
- ILLINOIS AMERICAN WATER COMPANY
- AMEREN IP
- SBC
- CHARTER COMMUNICATIONS, INC.

(MEMBERS OF J.U.L.L.E. (800) 892-0123 ARE INDICATED BY*. NON-J.U.L.L.E. MEMBERS MUST BE NOTIFIED INDIVIDUALLY)

FOR UTILITY LOCATION PURPOSES, THIS PROJECT IS LOCATED IN SECTION 8 OF TOWNSHIP 3 NORTH, RANGE 9 WEST OF THE THIRD PRINCIPAL MERIDIAN.

TREES SHALL BE PRESERVED THROUGH OUT THIS SECTION AS SHOWN ON THE PLANS AND AS DIRECTED BY THE ENGINEER.

REMOVAL OF AGGREGATE MATERIAL AND OIL AND CHIP BITUMINOUS MATERIAL SHALL NOT BE PAID FOR SEPARATELY, BUT WILL BE INCLUDED IN THE CONTRACT.

WHERE RESURFACING DIRECTLY OVER THE EXISTING PAVEMENT, THE CONTRACTOR SHALL CLEAN THE EXISTING SURFACE PRIOR TO THE APPLICATION OF PRIMER COAT AND BITUMINOUS OVERLAY. REFER TO SECTION 406.06 OF THE STANDARD SPECIFICATIONS.

THE CONTRACTOR SHALL CONSTRUCT PAVEMENT SO THAT FLOW ALONG CURBS AND/OR GUTTERS IS MAINTAINED, INCLUDING FLOW THROUGH INTERSECTIONS, AROUND CURB RETURNS AND TO EXISTING INLETS.

EARTHWORK AND MATERIAL REQUIRED IN CONNECTION WITH EXCAVATION, EMBANKMENTS, BACKFILLING BEHIND CURBS, SIDEWALKS, DRAINAGE STRUCTURES, GRADING AND SHAPING OF AREAS DISTURBED BY THE CONTRACTOR SHALL NOT BE PAID FOR SEPARATELY, BUT SHALL BE CONSIDERED INCIDENTAL TO VARIOUS ITEMS OF WORK INVOLVED AND NO ADDITIONAL COMPENSATION OR RENUMERATION WILL BE ALLOWED.

THE TOP OF PROPOSED P.C.C. CURB/CURB AND GUTTER SHALL BE CONSTRUCTED AT THE SAME ELEVATION AS THE TOP OF THE EXISTING CURB/CURB AND GUTTER. THIS SHALL BE DONE IN ORDER TO MAINTAIN THE EXISTING DRAINAGE PATTERN TO THE EXISTING INLETS AND TO MAINTAIN THE EXISTING PROFILE.

THE EXISTING PAVEMENT MARKINGS FOR THE CURRENT CROSSWALK SHALL BE REMOVED IF REQUIRED BY THE ENGINEER. THE COST OF THIS WORK SHALL BE CONSIDERED AS INCIDENTAL TO CONTRACT AND NO ADDITIONAL COMPENSATION WILL BE ALLOWED.

THE CONTRACTOR SHALL BE REQUIRED TO PERFORM SAWCUTTING AT THE EXISTING PAVEMENT, EXISTING WIDENING, OR EXISTING SHOULDER EDGE THROUGHOUT THE PROJECT LIMITS IN ORDER TO PERFORM REMOVAL OPERATIONS. THIS SAWING WILL NOT BE PAID FOR SEPARATELY, BUT WILL BE INCLUDED IN THE COST FOR THE REMOVAL ITEM INVOLVED.

CHANGES IN THE VERTICAL OR HORIZONTAL DIMENSIONS OF GUTTERS, CURBS, OR CURB AND GUTTERS, WHEN TRANSITIONS FROM ONE TYPE TO ANOTHER AS SHOWN IN THE PLANS, WILL BE PAID FOR AT THE CONTRACT UNIT PRICE PER FOOT FOR THE TYPE DESIGNATED IN THE PLAN SCHEDULE.

THE THICKNESS OF BITUMINOUS MIXTURES SHOWN ON THE PLANS IS THE AVERAGE THICKNESS. DEVIATIONS FROM THE AVERAGE THICKNESS WILL BE PERMITTED WHEN SUCH DEVIATIONS OCCUR DUE TO IRREGULARITIES IN THE EXISTING SURFACE OR BASE ON WHICH THE BITUMINOUS MIXTURE IS PLACED.

THE CONTRACTOR SHALL VERIFY ALL DIMENSIONS AND CONDITIONS IN THE FIELD PRIOR TO CONSTRUCTION AND ORDERING OF MATERIALS.

WHERE PROPOSED CONCRETE PAVEMENT OR PCC CURB AND GUTTER IS TO BE CONSTRUCTED ADJACENT TO EXISTING CONCRETE PAVEMENT OR PCC CURB AND GUTTER, THE CONTRACTOR SHALL DRILL AND GROUT NO. 6 X 30 EPOXY COATED TIE BARS AT 30" CENTERS. THE CONTRACTOR SHALL ALSO INSTALL NO. 6 X 30 EPOXY COATED TIE BARS ALONG THE PROPOSED LONGITUDINAL CONSTRUCTION JOINT AS SHOWN IN THE TYPICAL SECTIONS AT 30" CENTERS. THE COST OF THIS WORK SHALL BE INCLUDED IN THE CONTRACT AND NO EXTRA COMPENSATION WILL BE ALLOWED.

THE REMOVAL OF ANY CURB/CURB AND GUTTER SHALL ALSO INCLUDE THE DISCONNECTION OF THE EXISTING CURB/CURB AND GUTTER FROM ANY REINFORCEMENT OR COLLATERAL MATERIAL THAT MAY BE PRESENTLY ATTACHED. THERE SHALL NOT BE ANY ADDITIONAL RENUMERATION BUT THIS WORK SHALL BE CONSIDERED AS INCIDENTAL TO THE REMOVAL ITEM.

THE STANDARDS AND REVISION NUMBERS LISTED SHALL APPLY TO THIS PROJECT.

"ROAD CONSTRUCTION AHEAD" SIGNS SHALL BE PLACED AT THE BEGINNING AND END OF THE PROJECT PLUS THE INTERSECTING SIDE ROADS, AND WILL BE CONSIDERED INCLUDED IN THE TRAFFIC CONTROL PAY ITEMS. ALL CONSTRUCTION SIGNS SHALL BE FLUORESCENT ORANGE.

ALL EXCAVATED AREAS DUE TO WIDENING AND/OR PATCHING OPERATIONS SHALL BE PROTECTED WITH EXTENDED LEG BARRICADES WITH APPROPRIATE LIGHTS. THIS WILL NOT BE PAID FOR SEPARATELY BUT WILL BE INCLUDED IN THE CONTRACT.

THE CONTRACTOR SHALL BE RESPONSIBLE FOR AN ON-SITE INSPECTION PRIOR TO SUBMITTING A BID ON THIS PROJECT. UPON RECEIPT OF A BID, IT SHALL BE ASSUMED THAT THE CONTRACTOR IS FULLY FAMILIAR WITH THE CONSTRUCTION SITE.

THE CONTRACTOR SHALL BE RESPONSIBLE FOR CONTACTING THE FIRE DEPARTMENT AND POLICE DEPARTMENT OF THE RESPECTIVE MUNICIPALITY ANY TIME NORMAL TRAFFIC FLOW ON ANY STREET OR ROAD IS TO BE INTERRUPTED, HOWEVER BRIEFLY.

- GRANITE CITY POLICE DEPARTMENT 618-451-9760 (NON-EMERGENCY)
- GRANITE CITY FIRE DEPARTMENT 618-452-6231 (NON-EMERGENCY)
- MADISON COUNTY POLICE DEPARTMENT 618-692-4433 (NON-EMERGENCY)

BY	DATE
SURVEYED	
PLOTTED	
TEMPLATE	
AREAS CHECKED	
NO.	

BY	DATE
ORIGINAL SURVEY	
PLOTTED	
TEMPLATE	
AREAS CHECKED	
NO.	

<p>Juneau Associates, Inc. P.C. CONSULTING ENGINEERS AND LAND SURVEYORS 2100 State Street, P.O. Box 1325 Granite City, Illinois 62940 Phone: (618) 871-1400 / (618) 482-5555 Fax: (618) 142-5541</p>		<p>GENERAL NOTES GRANITE CITY SENIOR HIGH SCHOOL GRANITE CITY, ILLINOIS SECTION No. 02-00183-00-TL</p>									
<p>REVISIONS</p> <table border="1"> <thead> <tr> <th>NO.</th> <th>DATE</th> <th>BY</th> <th>REMARKS</th> </tr> </thead> <tbody> <tr> <td> </td> <td> </td> <td> </td> <td> </td> </tr> </tbody> </table>		NO.	DATE	BY	REMARKS					<p>SCALE: N.T.S.</p>	
NO.	DATE	BY	REMARKS								
<p>DWG. NO.</p>		<p>DSN. BY: BFK DATE: 11/18/04 SHEET</p> <p>DWN. BY: WRC DATE: 11/18/04</p> <p>CHKD: BFK DATE: 11/18/04</p> <p>JOB NO. 020210 DGN. NAME: GENNOTES OF 16 SHTS</p>									


SUMMARY OF QUANTITIES

SUMMARY OF QUANTITIES			
CODE NO.	ITEM DESCRIPTION	UNIT	Y031-IF TOTAL QUANTITY
20800150	TRENCH BACKFILL	CU YD	7
25000910	SEEDING, CLASS I (MODIFIED)	ACRE	0.50
25100110	MULCH, METHOD 1	TON	1
31100300	SUB-BASE GRANULAR MATERIAL, TYPE A 4"	SQ YD	319
42000300	PORTLAND CEMENT CONCRETE PAVEMENT 8"	SQ YD	247
42001200	PAVEMENT FABRIC	SQ YD	247
42300400	PORTLAND CEMENT CONCRETE DRIVEWAY PAVEMENT, 8 INCH	SQ YD	970
42400100	PORTLAND CEMENT CONCRETE SIDEWALK 4"	SQ FT	726
44000100	PAVEMENT REMOVAL	SQ YD	1168
44000300	CURB REMOVAL	FOOT	135
44000500	COMBINATION CURB AND GUTTER REMOVAL	FOOT	658
44000600	SIDEWALK REMOVAL	SQ FT	402
60235700	INLETS, TYPE A, TYPE 3 FRAME AND GRATE	EACH	1
60600605	CONCRETE CURB, TYPE B	FOOT	311
60605000	COMBINATION CONCRETE CURB AND GUTTER, TYPE B-6.24	FOOT	471
67100100	MOBILIZATION	L SUM	1
70101700	TRAFFIC CONTROL AND PROTECTION	L SUM	1
72000100	SIGN PANEL - TYPE 1	SQ FT	18
78000200	THERMOPLASTIC PAVEMENT MARKING - LINE 4"	FOOT	250
78000400	THERMOPLASTIC PAVEMENT MARKING - LINE 6"	FOOT	98
78000600	THERMOPLASTIC PAVEMENT MARKING - LINE 12"	FOOT	56
80500105	SERVICE INSTALLATION, TYPE A (MODIFIED)	EACH	1
81012500	CONDUIT IN TRENCH, 1 1/2" DIA., PVC	FOOT	87
81012700	CONDUIT IN TRENCH, 2 1/2" DIA., PVC	FOOT	71
81013000	CONDUIT IN TRENCH, 4" DIA., PVC	FOOT	5
81018400	CONDUIT PUSHED, 1 1/2" DIA., GALVANIZED STEEL	FOOT	45

SUMMARY OF QUANTITIES			
CODE NO.	ITEM DESCRIPTION	UNIT	Y031-IF TOTAL QUANTITY
81018700	CONDUIT PUSHED, 3" DIA., GALVANIZED STEEL	FOOT	62
81400400	CONCRETE HANDHOLE	EACH	2
81500200	TRENCH AND BACKFILL FOR ELECTRICAL WORK	FOOT	163
85700105	FULL-ACTUATED CONTROLLER AND TYPE III CABINET, SPECIAL	EACH	1
87301215	ELECTRIC CABLE IN CONDUIT, SIGNAL NO. 14 2C	FOOT	187
87301225	ELECTRIC CABLE IN CONDUIT, SIGNAL NO. 14 3C	FOOT	201
87301245	ELECTRIC CABLE IN CONDUIT, SIGNAL NO. 14 5C	FOOT	743
87301815	ELECTRIC CABLE IN CONDUIT, SERVICE NO. 6 3C	FOOT	5
87502680	TRAFFIC SIGNAL POST, ALUMINUM 14 FT.	EACH	2
87700170	STEEL MAST ARM ASSEMBLY AND POLE, 26 FT.	EACH	2
87800100	CONCRETE FOUNDATION, TYPE A	FOOT	6
87800210	CONCRETE FOUNDATION, TYPE D (SPECIAL)	FOOT	3
87800400	CONCRETE FOUNDATION, TYPE E 30-INCH DIAMETER	FOOT	20
88200400	TRAFFIC SIGNAL BACKPLATE, FORMED PLASTIC	EACH	4
X0323553	ORNAMENTAL FENCE, WROUGHT IRON	FOOT	774
X8801300	SIGNAL HEAD, POLYCARBONATE, LED, 1-FACE, 3-SECTION, BRACKET MOUNTED	EACH	2
X8801310	SIGNAL HEAD, POLYCARBONATE, LED, 1-FACE, 3-SECTION, MAST ARM MOUNTED	EACH	4
X8810395	PEDESTRIAN SIGNAL HEAD, POLYCARBONATE, LED, 1-FACE, BRACKET MOUNTED	EACH	2
X8880010	ADA PEDESTRIAN PUSH-BUTTON	EACH	2
XX003182	BOLLARDS COMPLETE (SET OF 3)	EACH	1
XX003360	STORM SEWER PVC (SDR 26), 12"	FOOT	37
XX003592	BOLLARD ASSEMBLY	EACH	1

FINAL SURVEY PLOTTED	BY	DATE
NOTE BOOK TEMPLATE AREAS CHECKED		
NO.		

ORIGINAL SURVEY PLOTTED	BY	DATE
NOTE BOOK TEMPLATE AREAS CHECKED		
NO.		

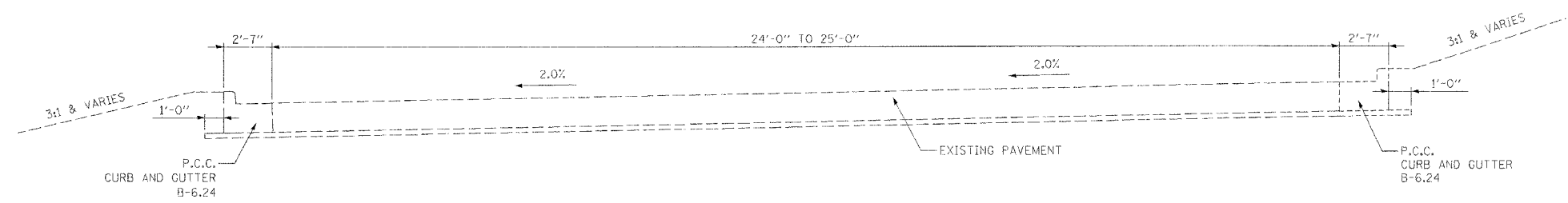
 Junco Associates, Inc. P.C. CONSULTING ENGINEERS AND LAND SURVEYORS <small>2102 State Street, P.O. Box 1325 Granite City, Illinois 62040 Phone: (618) 937-1400 Fax: (618) 937-5351</small>		SUMMARY OF QUANTITIES GRANITE CITY SENIOR HIGH SCHOOL GRANITE CITY, ILLINOIS SECTION No. 02-00183-00-TL																	
REVISIONS <table border="1" style="width: 100%; border-collapse: collapse;"> <thead> <tr> <th>NO.</th> <th>DATE</th> <th>BY</th> <th>REMARKS</th> </tr> </thead> <tbody> <tr><td> </td><td> </td><td> </td><td> </td></tr> <tr><td> </td><td> </td><td> </td><td> </td></tr> <tr><td> </td><td> </td><td> </td><td> </td></tr> </tbody> </table>		NO.	DATE	BY	REMARKS													SCALE: N.T.S. DSN. BY: BFK DATE: 11/18/04 DWN. BY: WRC DATE: 11/18/04 CHK'D: BFK DATE: 11/18/04 DWG. NO. JOB NO. 020210 DGN. NAME: SUMQTY OF 16 SHTS	
NO.	DATE	BY	REMARKS																
		SHEET 3																	

F.A.U. RTE.	SECTION	COUNTY	TOTAL SHEETS	SHEET NO.
9097	02-00183-00-TL	MADISON	16	4
FED. ROAD DIST. NO.	ILLINOIS	FED. AID PROJECT		

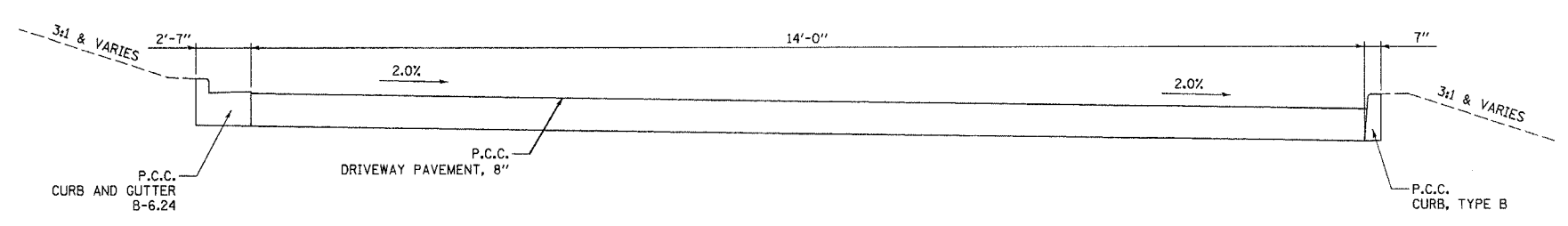
CONTRACT NO. 97243

DATE	BY
FINAL SURVEY PLOTTED	
NOTE BOOK TEMPLATE AREAS CHECKED	
NO.	

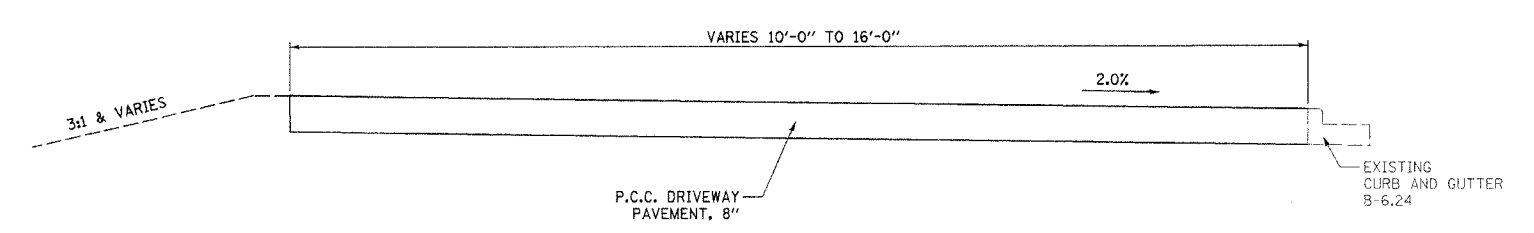
DATE	BY
ORIGINAL SURVEY PLOTTED	
NOTE BOOK TEMPLATE AREAS CHECKED	
NO.	



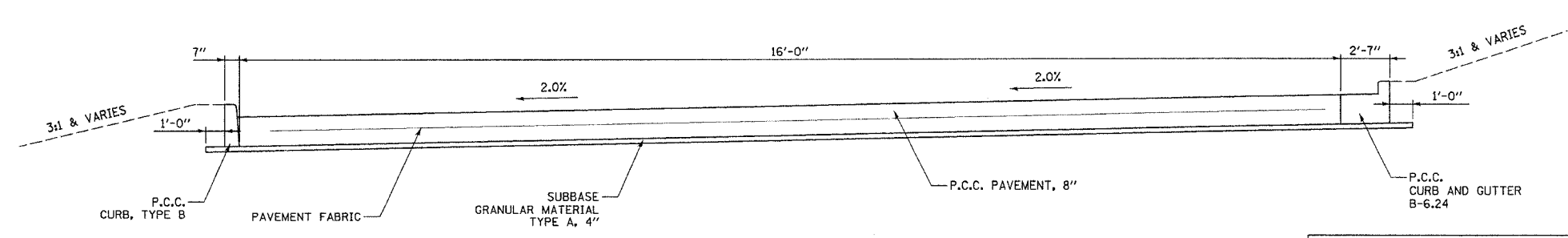
EXISTING ENTRANCE TYPICAL SECTION



PROPOSED EAST DRIVEWAY ENTRANCE TYPICAL SECTION



PROPOSED WEST DRIVEWAY ENTRANCE SIDEWALK



PROPOSED WEST ENTRANCE TYPICAL SECTION

Juneau Associates, Inc. P.C.
CONSULTING ENGINEERS AND LAND SURVEYORS
2100 State Street, P.O. Box 1325
Granite City, Illinois 62040
Phone: 618/358-0200 / 618/358-0205
Fax: 618/358-0941

TYPICAL SECTIONS
GRANITE CITY SENIOR
HIGH SCHOOL
GRANITE CITY, ILLINOIS
SECTION No. 02-00183-00-TL

REVISIONS			
NO.	DATE	BY	REMARKS

SCALE:	N.T.S.
DSN. BY:	BFK
DATE:	11/18/04
DWN. BY:	WRC
DATE:	11/18/04
CHK'D:	BFK
DATE:	11/18/04
DWG. NO.	

SHEET
4
OF 16 SHTS

SIDEWALK SCHEDULE

LOCATION	AREA (SQ FT)
STA. 101+17.40 LT TO STA. 101+62.72 LT	288.3
STA. 101+87.12 LT TO STA. 101+92.64 LT	27.1
STA. 102+41.75 LT TO STA. 102+47.49 LT	229.4
STA. 102+41.14 RT TO STA. 102+47.15 RT	91.9
STA. 104+80.45 LT TO STA. 104+86.60 LT	89.7
TOTAL	726

PAVEMENT SCHEDULE

LOCATION	PCC PAVEMENT 8 IN (SQ YD)	PCC DRIVEWAY PAVEMENT 8 IN (SQ YD)	SUB-BASE GRANULAR MATERIAL, 4 IN (SQ YD)	PAVEMENT FABRIC (SQ YD)
STA. 101+54.59 TO STA. 104+80.44		421.7		
STA. 101+13.99 TO STA. 102+41.55	247.2		319.0	247.2
STA. 104+99.75 TO STA. 108+34.67		548.5		
TOTAL	247	970	319	247

COMBINATION CONCRETE CURB & GUTTER

LOCATION	C & G TYPE B-6.24 (FOOT)	CURB TYPE B (FOOT)
STA. 101+13.99 - 28.41' LT TO STA. 101+47.74 - 51.81' LT		42.4
STA. 101+61.15 - 26.09' LT TO STA. 102+13.09 - 22.94' LT		52.0
STA. 101+61.15 - 26.09' LT TO STA. 102+40.96 - 30.34' LT	94.5	
STA. 101+80.09 - 50.47' LT TO STA. 102+41.15 - 57.36' LT	61.9	
STA. 102+35.56 - 27.05' RT TO STA. 102+40.56 - 27.10' RT		5.0
STA. 102+35.91 - 22.74' LT TO STA. 102+40.91 - 22.69' LT		5.0
STA. 102+41.14 - 56.07' LT TO STA. 102+41.72 - 56.06' LT		3.6
STA. 102+47.75 - 55.98' LT TO STA. 102+48.33 - 55.97' LT		3.7
STA. 102+40.56 - 26.70' RT TO STA. 102+41.14 - 26.70' RT		15.3
STA. 102+47.15 - 26.68' RT TO STA. 102+47.73 - 26.68' RT		15.3
STA. 102+40.91 - 22.12' LT TO STA. 102+41.49 - 22.11' LT		9.6
STA. 102+41.17 - 56.07' LT TO STA. 102+48.33 - 55.97' LT		7.3
STA. 102+47.49 - 22.07' LT TO STA. 102+48.07 - 22.04' LT		9.6
STA. 102+47.73 - 27.16' RT TO STA. 102+52.72 - 27.21' RT		5.0
STA. 102+48.07 - 22.62' LT TO STA. 102+53.07 - 22.56' LT		5.0
STA. 102+48.12 - 30.40' LT TO STA. 102+53.12 - 30.35' LT	5.0	
STA. 102+48.31 - 57.31' LT TO STA. 102+53.31 - 57.24' LT	5.0	
STA. 104+99.65 - 22.05' LT TO STA. 105+13.18 - 29.22' LT		16.3
STA. 105+34.53 - 54.93' LT TO STA. 108+42.57 - 47.86' LT	304.3	
STA. 105+40.74 - 23.56' LT TO STA. 106+35.36 - 26.93' LT		115.6
TOTAL	471	311

CURB AND GUTTER REMOVAL

LOCATION	C & G TYPE B-6.24 (FT)	CURB TYPE B (FT)
STA. 101+09.85 - 27.87' LT TO STA. 101+35.06 - 67.34' LT		59.7
STA. 102+13.04 - 22.40' LT TO STA. 102+53.13 - 30.35' LT	52.2	
STA. 101+35.06 - 67.34' LT TO STA. 102+53.31 - 57.24' LT	130.3	
STA. 102+35.56 - 27.05' RT TO STA. 102+52.72 - 27.21' RT		17.2
STA. 102+35.91 - 22.74' LT TO STA. 102+53.07 - 22.56' LT		17.2
STA. 102+35.98 - 31.75' LT TO STA. 102+53.13 - 31.57' LT	17.2	
STA. 105+08.65 - 54.73' LT TO STA. 108+52.63 - 47.85' LT	333.6	
STA. 105+09.63 - 27.72' LT TO STA. 106+35.36 - 26.83' LT	124.9	
STA. 104+99.70 - 22.08' LT TO STA. 105+40.74 - 23.65' LT		40.8
TOTAL	658	135

ORNAMENTAL FENCE, WROUGHT IRON

LOCATION	ORNAMENTAL FENCE (FOOT)
STA. 102+87.71 - 52.48' LT TO STA. 102+41.16 - 58.66' LT	55.0
STA. 102+48.32 - 58.62' LT TO STA. 109+67.30 - 53.76' LT	719.1
TOTAL	774

STRIPING SCHEDULE

LOCATION	TYPE	THERMOPLASTIC			
		4" YELLOW (FOOT)	4" WHITE (FOOT)	6" WHITE (FOOT)	12" WHITE (FOOT)
STA. 100+89.54 TO STA. 104+02.82					
	STOP BARS				56
	SKIP-DASH 10'-30'		50		
	CENTERLINE	200			
	CROSSWALKS			98	
TOTAL		200	50	98	56

INLET & STORM SEWER SCHEDULE

LOCATION	INLET TY A TYPE 3 FRAME & GRATE (EACH)	STORM SEWER PVC, SDR 26 12 IN (FOOT)
STA. 101+95.81 - 54.53' LT	1	37
TOTAL	1	37

SIGN SCHEDULE

LOCATION	LT / RT	PROPOSED OFFSET (FT)	DESCRIPTION	SIGN PANEL T1 (SQ FT)
STA. 101+88.32	RT	35.0	S2-1	9
STA. 103+01.64	LT	23.9	S2-1	9
TOTAL				18

PAVEMENT REMOVAL


LOCATION	AREA (SQ YD)
STA. 101+23.69 LT TO STA. 102+47.55 LT	359.4
STA. 105+08.94 LT TO STA. 108+33.82 LT	808.5
TOTAL	1168

SIDEWALK REMOVAL

LOCATION	AREA (SQ FT)
STA. 101+18.19 - 29.67' LT TO STA. 101+33.74 - 38.55' LT	42.0
STA. 101+17.40 - 57.60' LT TO STA. 101+34.38 - 57.99' LT	147.0
STA. 101+56.37 - 56.47' LT TO STA. 101+92.64 - 78.02' LT	213.0
TOTAL	402

FINAL SURVEY PLOTTED
NOTE BOOK TEMPLATE AREAS CHECKED
NO.

ORIGINAL SURVEY PLOTTED
NOTE BOOK TEMPLATE AREAS CHECKED
NO.

 Juneau Associates, Inc. P.C. CONSULTING ENGINEERS AND LAND SURVEYORS 2100 State Street, P.O. Box 125 Granite City, Illinois 62040 Phone: (618) 387-1400 / (618) 387-1500 Fax: (618) 387-2041		QUANTITY SCHEDULES GRANITE CITY SENIOR HIGH SCHOOL GRANITE CITY, ILLINOIS SECTION No. 02-00183-00-TL	
REVISIONS NO. DATE BY REMARKS		SCALE: N.T.S.	
DSN BY: BFK DATE: 11/18/04 DWN BY: WRC DATE: 11/18/04 CHKD: BFK DATE: 11/18/04		SHEET 5	
DWG. NO.		JOB NO. 020210 DGN. NAME: COMBSCH0 OF 16 SHTS	

F.A.U. RTE.	SECTION	COUNTY	TOTAL SHEETS	SHEET NO.
9097	02-00183-00-TL	MADISON	16	6
FED. ROAD DIST. NO.	ILLINOIS	FED. AID PROJECT		

CONTRACT NO. 97243

GRANITE CITY SENIOR HIGH SCHOOL

GRAND AVENUE (60' Wide)

WEST ENTRANCE

EAST ENTRANCE

MADISON AVENUE (60' Wide)

IOWA STREET (60' Wide)

30th STREET

NAMEOKI ROAD

ST. CLAIR AVENUE



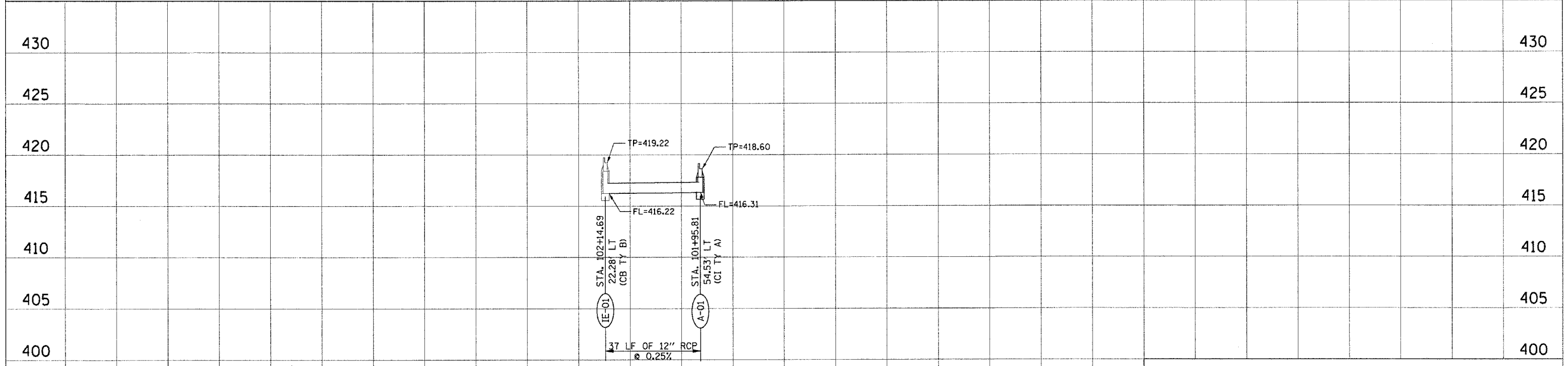
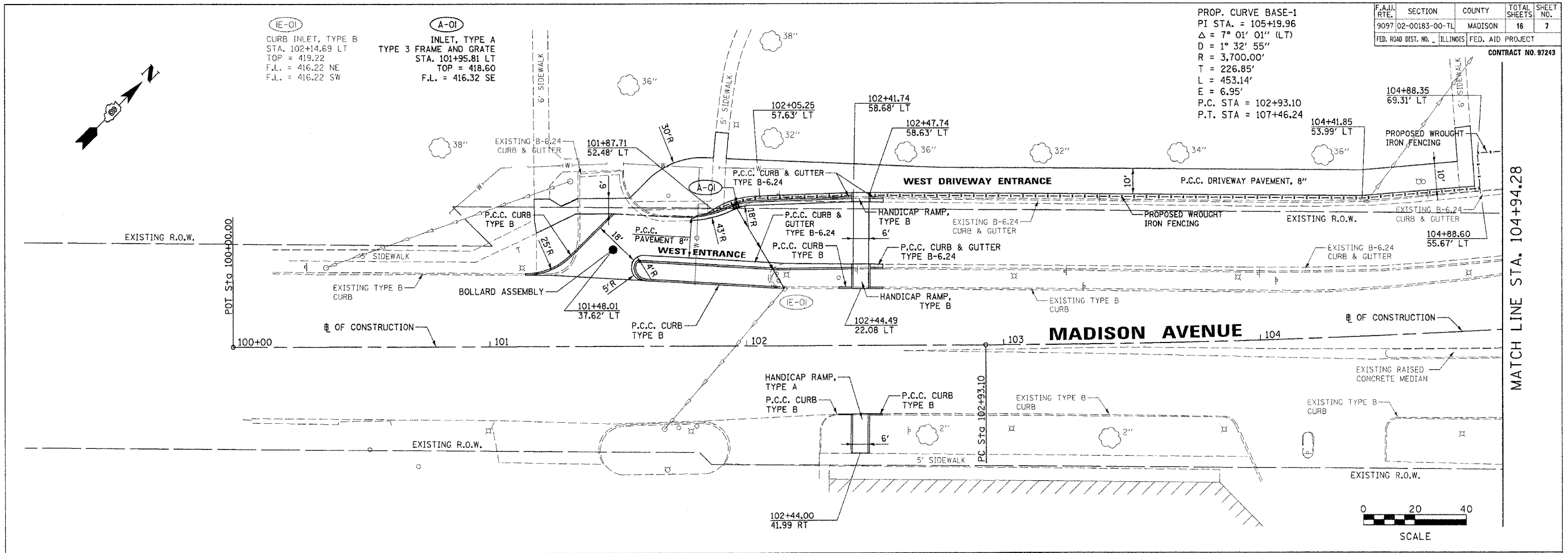
FINAL SURVEY PLOTTED	BY	DATE
NOTE BOOK TEMPLATE AREAS CHECKED		

ORIGINAL SURVEY PLOTTED	BY	DATE
NOTE BOOK TEMPLATE AREAS CHECKED		

Juneau Associates, Inc. P.C. CONSULTING ENGINEERS AND LAND SURVEYORS <small>2100 State Street, P.O. Box 1325 Granite City, IL 62040 Phone: 618-953-0500 Fax: 618-953-0501</small>		ADVANCED WARNING SIGNS GRANITE CITY SENIOR HIGH SCHOOL GRANITE CITY, ILLINOIS SECTION No. 02-00183-00-TL										
<table border="1"> <thead> <tr> <th colspan="3">REVISIONS</th> </tr> <tr> <th>NO.</th> <th>DATE</th> <th>REMARKS</th> </tr> </thead> <tbody> <tr> <td> </td> <td> </td> <td> </td> </tr> </tbody> </table>		REVISIONS			NO.	DATE	REMARKS				SCALE: N.T.S. DSN. BY: BFK DATE: 11/18/04 DWN. BY: WRC DATE: 11/18/04 CHK'D: BFK DATE: 11/18/04 DWG. NO. JOB NO. 020210 DGN. NAME: ADWRNGI OF 16 SHTS	
REVISIONS												
NO.	DATE	REMARKS										

F.A.U. RTE.	SECTION	COUNTY	TOTAL SHEETS	SHEET NO.
9097	02-00183-00-TL	MADISON	16	7
FED. ROAD DIST. NO. ILLINOIS		FED. AID PROJECT		
CONTRACT NO. 97243				

PROP. CURVE BASE-1
 PI STA. = 105+19.96
 $\Delta = 7^{\circ} 01' 01''$ (LT)
 $D = 1^{\circ} 32' 55''$
 $R = 3,700.00'$
 $T = 226.85'$
 $L = 453.14'$
 $E = 6.95'$
 P.C. STA = 102+93.10
 P.T. STA = 107+46.24



BY	DATE

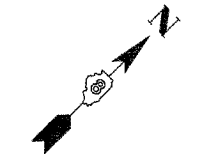
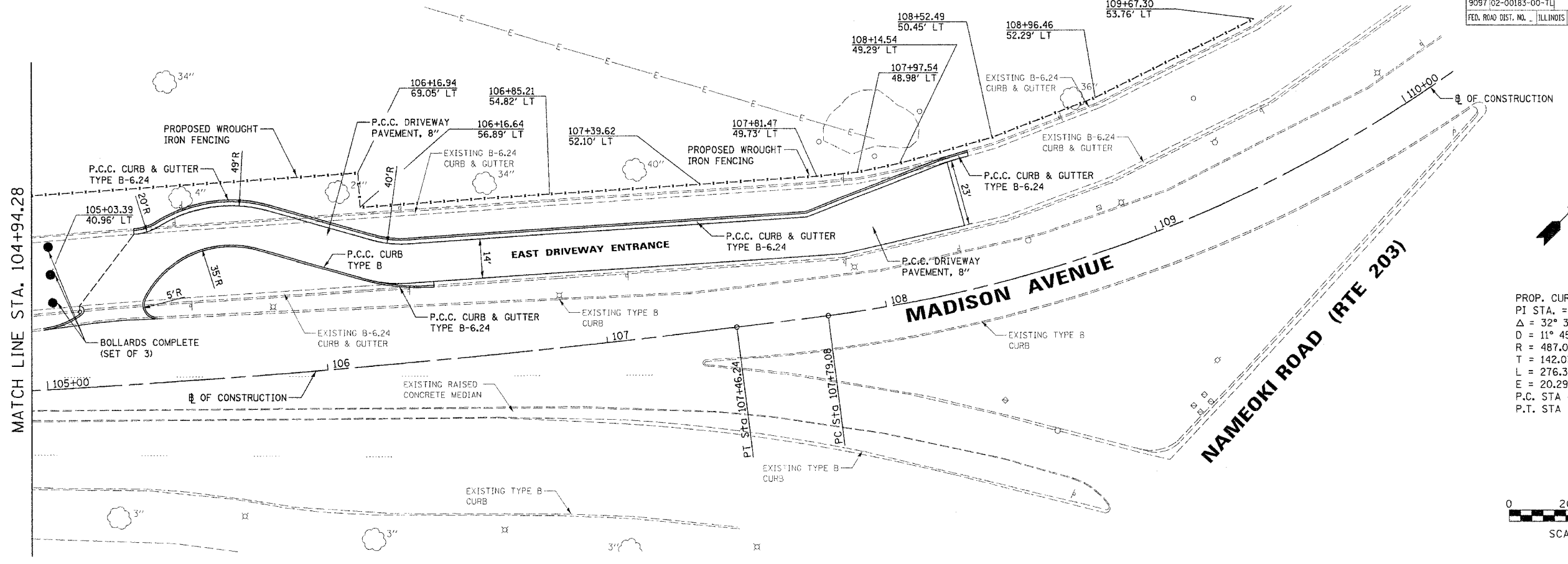
BY	DATE

Juneau Associates, Inc. P.C.
 CONSULTING ENGINEERS AND LAND SURVEYORS
 2100 South Street, P.O. Box 1125
 Granite City, Illinois 62040
 Phone: (618) 957-1400 / (618) 957-5532
 Fax: (618) 957-5541

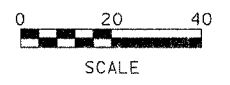
PLAN AND PROFILE
GRANITE CITY SENIOR HIGH SCHOOL
 GRANITE CITY, ILLINOIS
 SECTION No. 02-00183-00-TL

REVISIONS				SCALE:
NO.	DATE	BY	REMARKS	1 Inch = 20 feet

DSN. BY: BFK	DATE: 11/18/04	SHEET 7
DWN. BY: WRC	DATE: 11/18/04	
CHK'D: BFK	DATE: 11/18/04	
DWG. NO. 020210	DGN. NAME: GCHS_PLAN	OF 16 SHTS



PROP. CURVE BASE-2
 PI STA. = 109+21.11
 $\Delta = 32^\circ 31' 03''$ (LT)
 $D = 11^\circ 45' 54''$
 $R = 487.00'$
 $T = 142.03'$
 $L = 276.39'$
 $E = 20.29'$
 P.C. STA = 107+79.08
 P.T. STA = 110+55.47



FINAL SURVEYED	BY	DATE
SURVEY PLOTTED		
NOTE BOOK TEMPLATE		
AREAS CHECKED		
NO.		

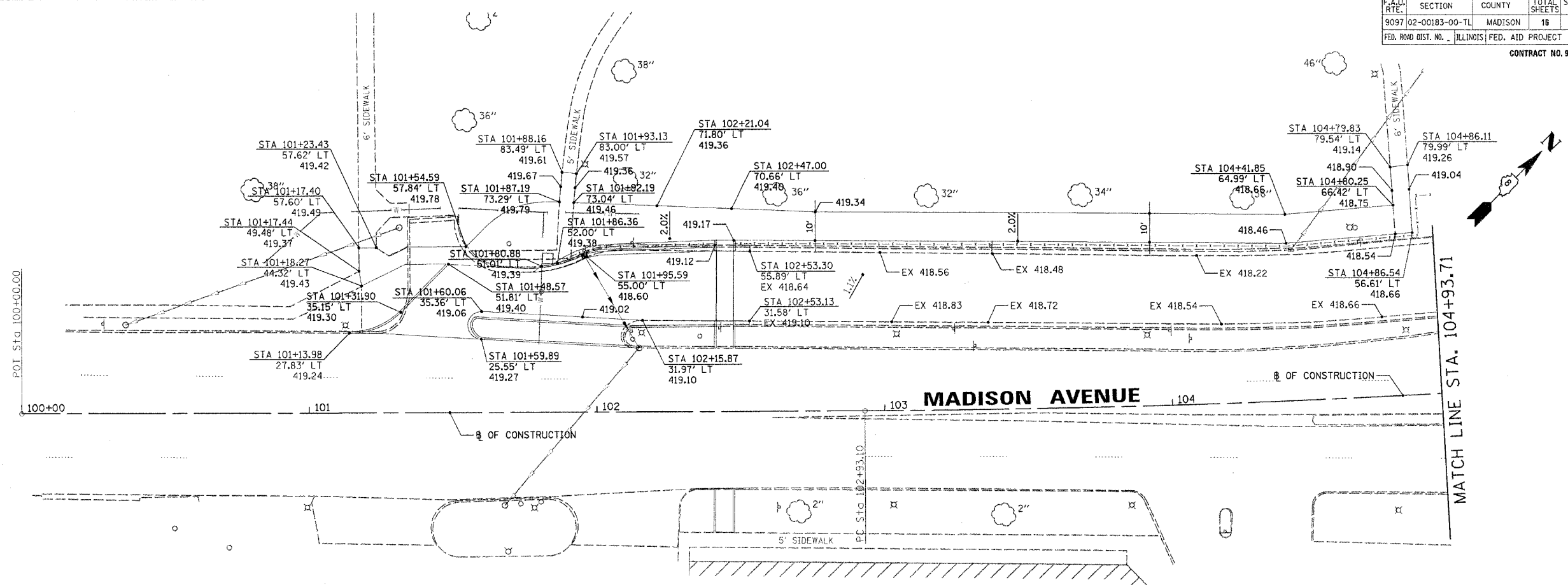
ORIGINAL SURVEYED	BY	DATE
SURVEY PLOTTED		
NOTE BOOK TEMPLATE		
AREAS CHECKED		
NO.		

430		430
425		425
420		420
415		415
410		410
405		
400		

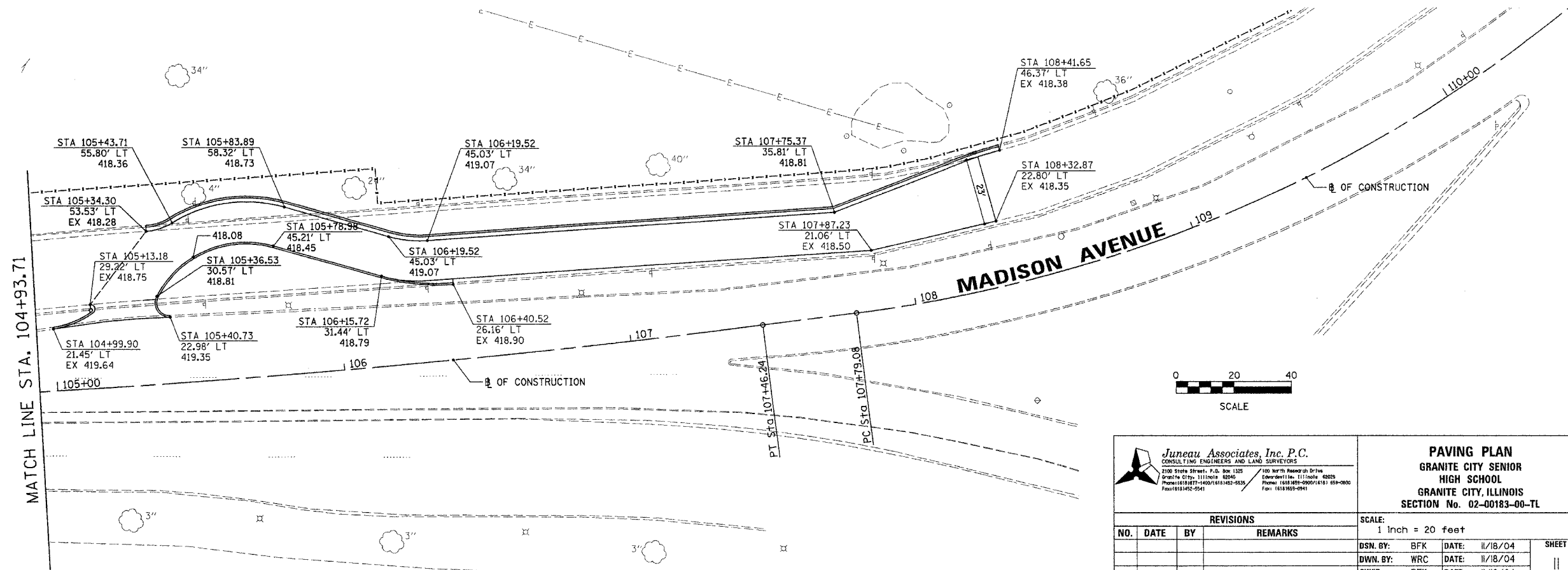
<p>Juneau Associates, Inc. P.C. CONSULTING ENGINEERS AND LAND SURVEYORS 2126 State Street, P.O. Box 1225 Granite City, Illinois 62040 Phone: (618) 937-1500 / (618) 937-5535 Fax: (618) 937-5544</p>		<p>PLAN AND PROFILE GRANITE CITY SENIOR HIGH SCHOOL GRANITE CITY, ILLINOIS SECTION No. 02-00183-00-TL</p>																	
<p>REVISIONS</p> <table border="1"> <thead> <tr> <th>NO.</th> <th>DATE</th> <th>BY</th> <th>REMARKS</th> </tr> </thead> <tbody> <tr> <td> </td> <td> </td> <td> </td> <td> </td> </tr> </tbody> </table>		NO.	DATE	BY	REMARKS					<p>SCALE: 1 Inch = 20 feet</p> <table border="1"> <tr> <td>DSN. BY: BFK</td> <td>DATE: 11/18/04</td> <td rowspan="2">SHEET 8</td> </tr> <tr> <td>DWN. BY: WRC</td> <td>DATE: 11/18/04</td> </tr> <tr> <td>CHK'D: BFK</td> <td>DATE: 11/18/04</td> <td></td> </tr> </table>		DSN. BY: BFK	DATE: 11/18/04	SHEET 8	DWN. BY: WRC	DATE: 11/18/04	CHK'D: BFK	DATE: 11/18/04	
NO.	DATE	BY	REMARKS																
DSN. BY: BFK	DATE: 11/18/04	SHEET 8																	
DWN. BY: WRC	DATE: 11/18/04																		
CHK'D: BFK	DATE: 11/18/04																		
<p>DWG. NO.</p>		<p>JOB NO. 020210 DGN. NAME: GCHS_PLAN OF 16 SHTS</p>																	

F.A.U. RTE.	SECTION	COUNTY	TOTAL SHEETS	SHEET NO.
9097 02-00183-00-TL	MADISON	ILLINOIS	16	11
FED. ROAD DIST. NO.	ILLINOIS FED. AID PROJECT		CONTRACT NO. 97243	

NO.	AREAS CHECKED	TEMPLATE	NO.	BY	DATE



NO.	AREAS CHECKED	TEMPLATE	NO.	BY	DATE



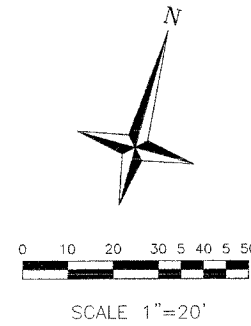
Juneau Associates, Inc. P.C. CONSULTING ENGINEERS AND LAND SURVEYORS 2100 State Street, P.O. Box 1325 Granite City, Illinois 62040 Phone: (618) 987-1400 / (618) 987-0539 Fax: (618) 987-0541				PAVING PLAN GRANITE CITY SENIOR HIGH SCHOOL GRANITE CITY, ILLINOIS SECTION No. 02-00183-00-TL	
REVISIONS				SCALE: 1 Inch = 20 feet	
NO.	DATE	BY	REVISIONS	DSN. BY:	SHEET
				BFK	11/18/04
				WRC	11/18/04
				BFK	11/18/04
DWG. NO. 020210				DGN. NAME: SCHS.GRD01 OF 16 SHTS	

CONTROLLER PHASING

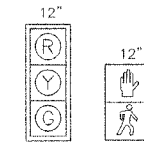
PROPOSED								
PHASE Ø	1	2	3	4	5	6	7	8
MOVEMENT	—	←	—	↑	—	—	—	—
CONCURRENT MOVEMENT PERMITTED	NOT USED	NONE	NOT USED	NONE	NOT USED	NOT USED	NOT USED	NOT USED

* EXCLUSIVE PEDESTRIAN MOVEMENT DISPLAYED ON ACTUATION ONLY

F.A.I. RTE.	SECTION	COUNTY	TOTAL SHEETS	SHEET NO.
9097	02-00183-00-TL	MADISON	16	13
FED. ROAD DIST. NO. ILLINOIS		FED. AID PROJECT		
CONTRACT NO. 97243				

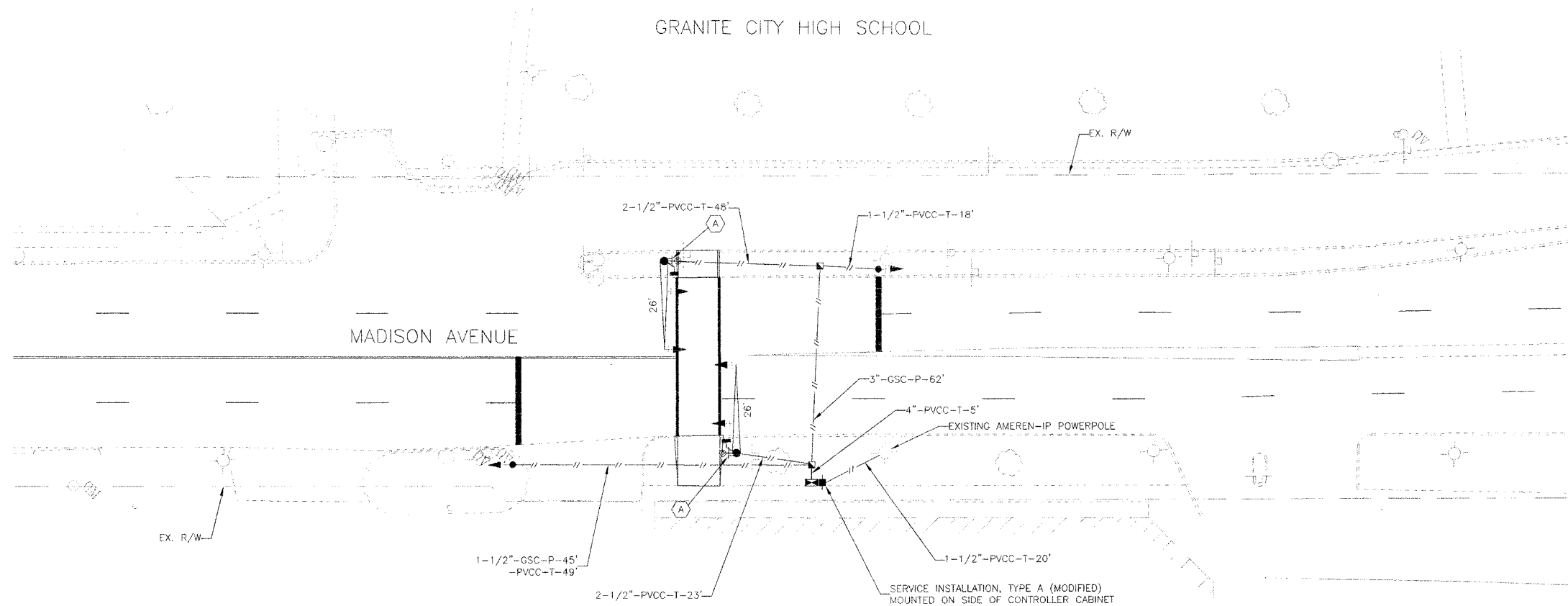


TRAFFIC SIGNAL FACES



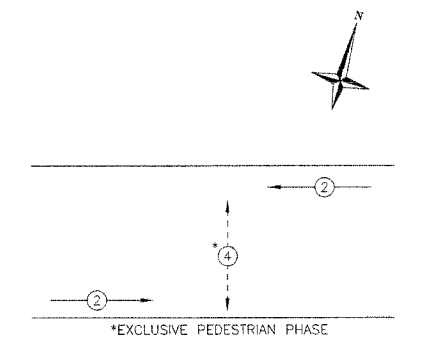
ALL VEHICLE SIGNALS

GRANITE CITY HIGH SCHOOL



TRAFFIC SIGNAL LEGEND

- PROPOSED TRAFFIC SIGNAL MAST ARM
- PROPOSED TRAFFIC SIGNAL POST
- PROPOSED TRAFFIC SIGNAL HEAD W/BACKPLATE
- PROPOSED PEDESTRIAN SIGNAL HEAD
- PROPOSED CONTROLLER
- PROPOSED HANDHOLE
- PROPOSED SERVICE INSTALLATION, TYPE A (MODIFIED) (MOUNTED ON CONTROLLER CABINET)
- PROPOSED CONDUIT: "T" TRENCH, "P" PUSHED, SIZE SPECIFIED
- TRAFFIC SIGN
- P.V.C.C. POLYVINYL CHLORIDE CONDUIT
- G.S.C. GALVANIZED STEEL CONDUIT



PHASE DESIGNATION DIAGRAM

SHEET NO.

13

Job No. 202-02-1
 Date: 11/1/04
 Scale: 1"=20'
 Drawn by: C.S.
 Design by: K.W.
 Approved by: D.B.B.
 File Name: TS202-02

REVISIONS

CBB Crawford, Bunte, Brammeier
 Traffic and Transportation Engineers
 St. Louis, Missouri/Glen Carbon, Illinois
 314-878-6644 618-656-2612
 Fax: 314-878-5876 E-Mail: cbb@cbbtraffic.com

PEDESTRIAN SIGNAL PLAN
 MADISON AVENUE &
 GRANITE CITY HIGH SCHOOL
 GRANITE CITY, ILLINOIS

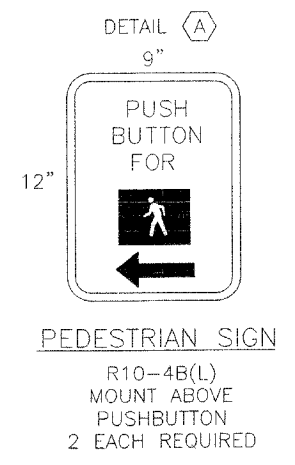
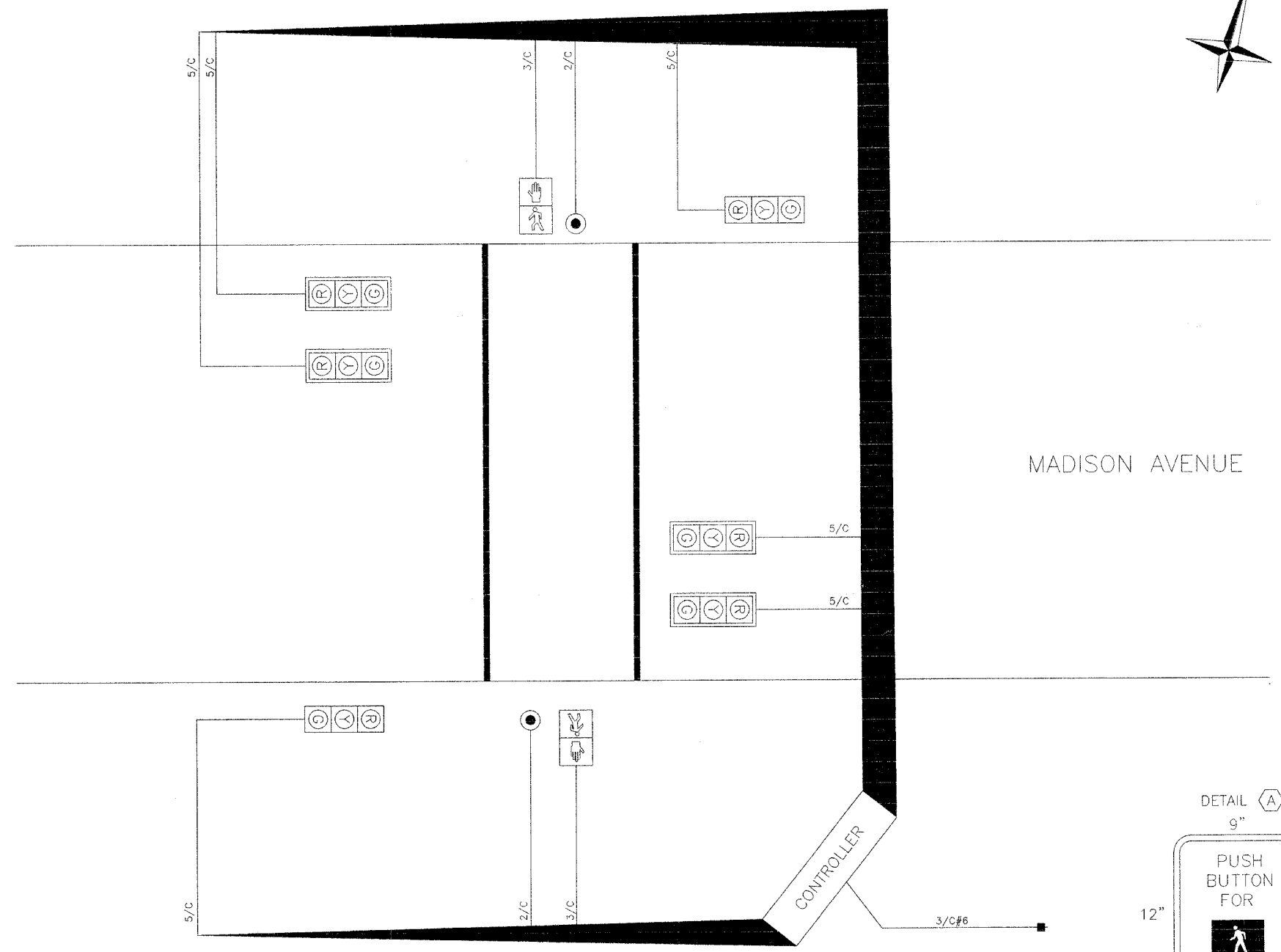
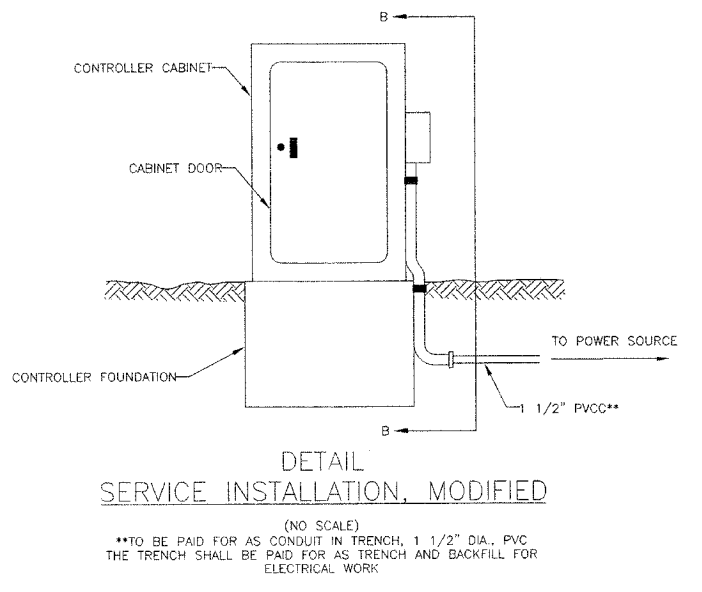
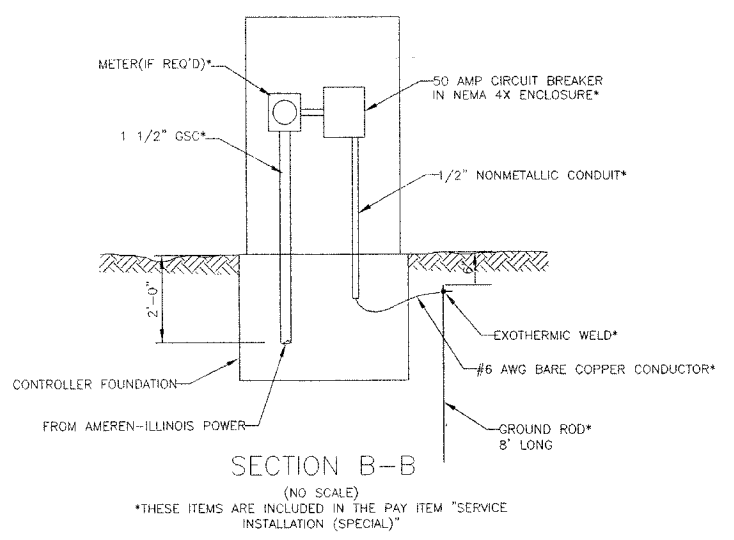
F.A.U. RTE.	SECTION	COUNTY	TOTAL SHEETS	SHEET NO.
9097	02-00183-00-TL	MADISON	16	14
FED. ROAD DIST. NO. ILLINOIS		FED. AID PROJECT		
CONTRACT NO. 97243				

SHEET NO.
14

Job No. 202-02-1
Date: 11/1/04
Scale: NONE
Drawn by: C.S.
Design by: K.W.
Approved by: D.B.B.
File Name: TS202-02

CABLE DIAGRAM LEGEND

- ELECTRIC CABLE IN CONDUIT
- 2/C INDICATES NUMBER OF CONDUCTORS IN CABLE
- SERVICE INSTALLATION
- #6 INDICATES AMERICAN WIRE GAUGE (AWG) SIZE 6 CONDUCTORS
- ⊙ TRAFFIC SIGNAL HEAD
- ⊙ TRAFFIC SIGNAL HEAD WITH BACKPLATE
- ⊙ PEDESTRIAN PUSHBUTTON DETECTOR



REVISIONS				

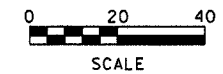
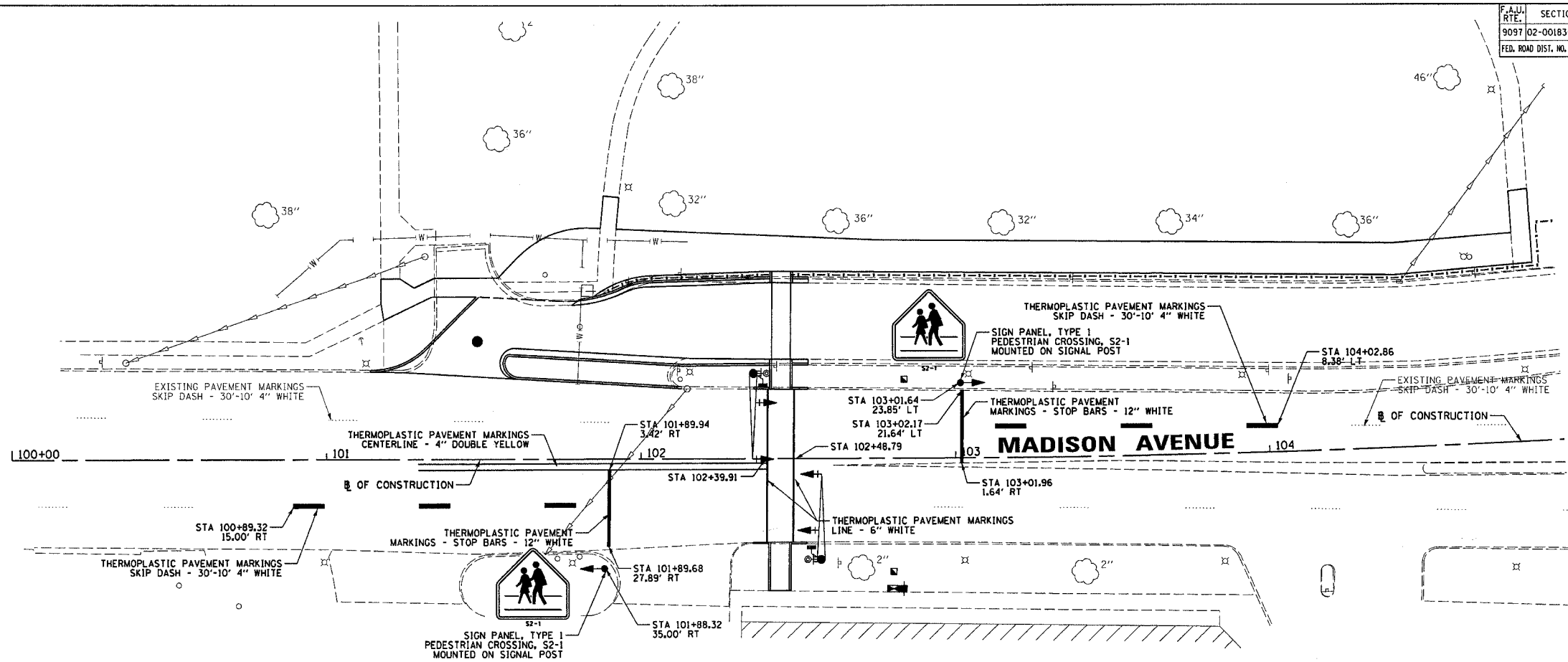
CBB Crawford Bunte Brammeier
Traffic and Transportation Engineers
St. Louis, Missouri / Glen Carbon, Illinois
314-878-6644 618-656-2612
Fax: 314-878-5876 E-Mail: cbb@cbtraffic.com

CABLE DIAGRAM
MADISON AVENUE &
GRANITE CITY HIGH SCHOOL
GRANITE CITY, ILLINOIS

F.A.U. RTE.	SECTION	COUNTY	TOTAL SHEETS	SHEET NO.
9097	02-00183-00-TL	MADISON	16	15
FED. ROAD DIST. NO. ILLINOIS FED. AID PROJECT				
CONTRACT NO. 97243				

DATE	BY
SURVEYED	
PLOTTED	
TEMPLATE	
NO. AREAS CHECKED	

DATE	BY
ORIGINAL SURVEY	
PLOTTED	
TEMPLATE	
NO. AREAS CHECKED	

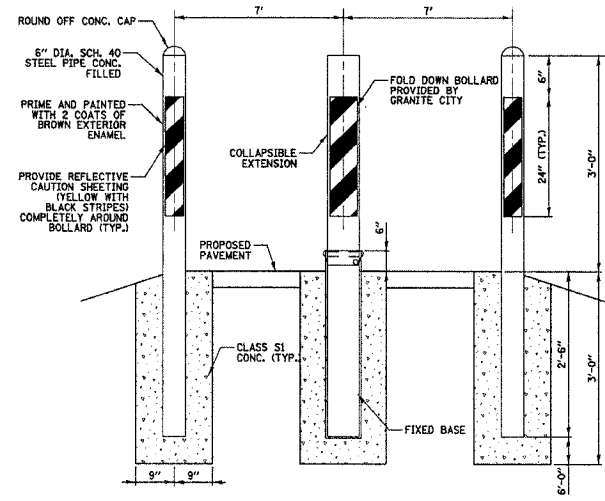


 Juneau Associates, Inc. P.C. CONSULTING ENGINEERS AND LAND SURVEYORS 2100 State Street, P.O. Box 1329 Granite City, Illinois 62040 Phone: (618) 937-1400/(618) 942-5535 Fax: (618) 932-5541 1100 North Rosereton Drive Edwardsville, Illinois 62025 Phone: (618) 935-2800/(618) 854-0600 Fax: (618) 935-5941		PAVEMENT MARKING GRANITE CITY SENIOR HIGH SCHOOL GRANITE CITY, ILLINOIS SECTION No. 02-00183-00-TL									
REVISIONS <table border="1"> <thead> <tr> <th>NO.</th> <th>DATE</th> <th>BY</th> <th>REMARKS</th> </tr> </thead> <tbody> <tr> <td> </td> <td> </td> <td> </td> <td> </td> </tr> </tbody> </table>		NO.	DATE	BY	REMARKS					SCALE: 1 Inch = 20 feet	
NO.	DATE	BY	REMARKS								
DSN. BY: BFK DWN. BY: WRC CHK'D: BFK DWG. NO.		DATE: 11/18/04 DATE: 11/18/04 DATE: 11/18/04 JOB NO. 020210 DGN. NAME: cch5_PMARK.dwg OF 16 SHTS									
		SHEET 15									

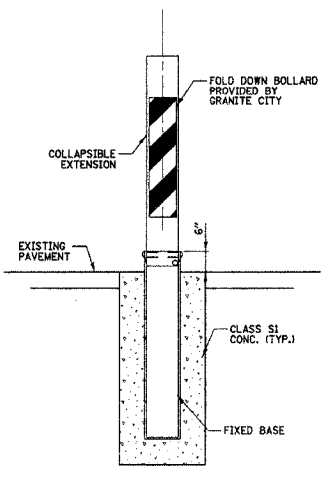
F.A.D. RTE.	SECTION	COUNTY	TOTAL SHEETS	SHEET NO.
9097	02-00183-00-TL	MADISON	16	16
FED. ROAD DIST. NO. ILLINOIS FED. AID PROJECT				

CONTRACT NO. 97243

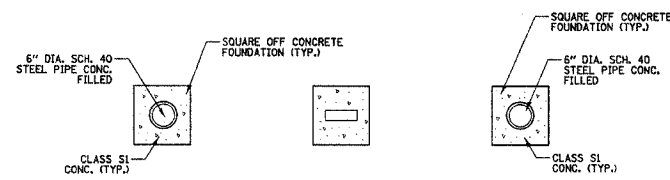
DATE	BY
FINAL SURVEY PLOTTED	
NOTE BOOK TEMPLATE	
AREAS CHECKED	
NO.	



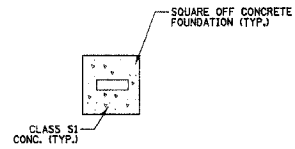
BOLLARD ELEVATION VIEW



BOLLARD ELEVATION VIEW



BOLLARD PLAN VIEW




BOLLARD PLAN VIEW

BOLLARDS COMPLETE (SET OF 3)

BOLLARD ASSEMBLY

DATE	BY
ORIGINAL SURVEY PLOTTED	
NOTE BOOK TEMPLATE	
AREAS CHECKED	
NO.	



Juneau Associates, Inc. P.C.
CONSULTING ENGINEERS AND LAND SURVEYORS
2100 State Street, P.O. Box 1325
Granite City, IL 60145-0254
Phone: (618) 877-1400 / (618) 452-5535
Fac: (618) 452-9541

MISCELLANEOUS DETAILS
GRANITE CITY SENIOR
HIGH SCHOOL
GRANITE CITY, ILLINOIS
SECTION No. 02-00183-00-TL

REVISIONS				SCALE:	
NO.	DATE	BY	REMARKS	1 Inch = 20 feet	
				DSN. BY: BFK	DATE: 11/18/04
				DWN. BY: WRC	DATE: 11/18/04
				CHK'D: BFK	DATE: 11/18/04
DWG. NO.				JOB NO. 020210	DGN. NAME: MSC DETAL OF 16 SHTS