


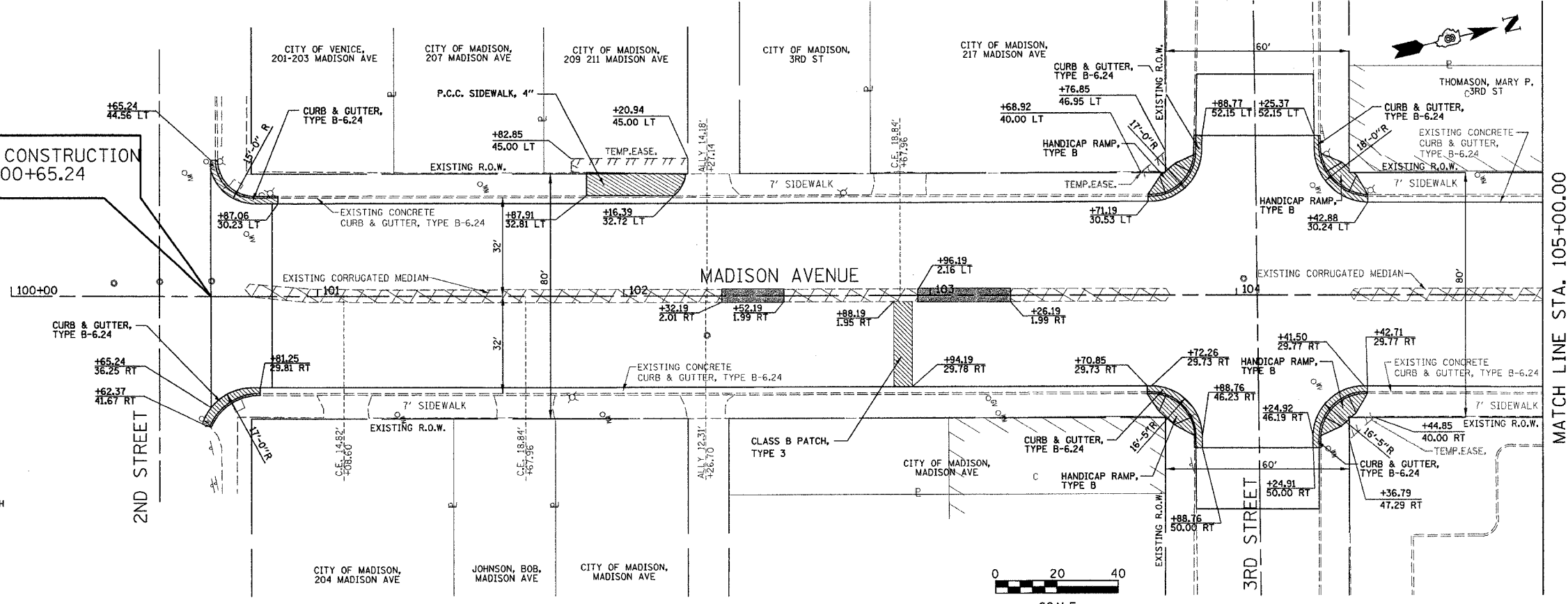


FINAL SURVEY	DATE
SURVEY PLOTTED	
NOTE BOOK TEMPLATE	
AREAS CHECKED	
NO.	

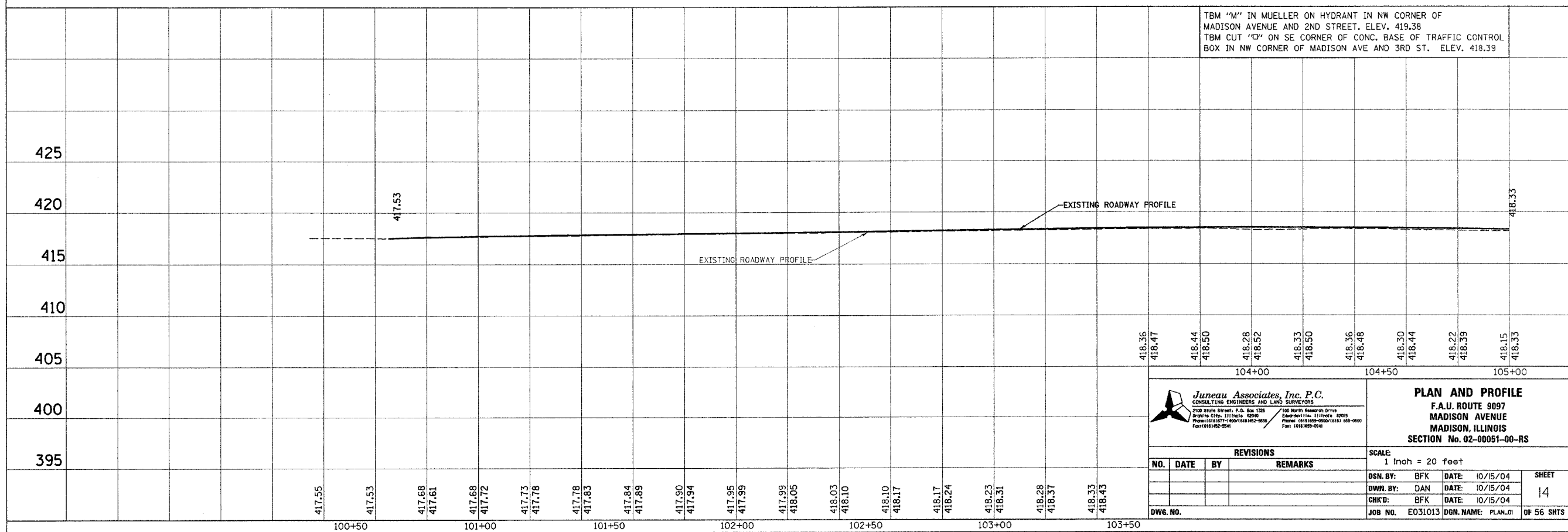
BEGIN CONSTRUCTION STA. 100+65.24

LEGEND

-  MEDIAN REMOVAL PARTIAL DEPTH (REMOVED BY MILLING)
-  REMOVED AND REPLACED
-  MEDIAN REMOVAL FULL DEPTH



ORIGINAL SURVEY	DATE
SURVEY PLOTTED	
NOTE BOOK TEMPLATE	
AREAS CHECKED	
NO.	



TBM "M" IN MUELLER ON HYDRANT IN NW CORNER OF MADISON AVENUE AND 2ND STREET. ELEV. 419.38
 TBM CUT "D" ON SE CORNER OF CONC. BASE OF TRAFFIC CONTROL BOX IN NW CORNER OF MADISON AVE AND 3RD ST. ELEV. 418.39

Juneau Associates, Inc. P.C.
 CONSULTING ENGINEERS AND LAND SURVEYORS
 2100 State Street, P.O. Box 1325
 Granite City, Illinois 62040
 Phone: (618) 377-4000 FAX: (618) 377-4033
 Fax: (618) 402-2541

PLAN AND PROFILE
 F.A.U. ROUTE 9097
 MADISON AVENUE
 MADISON, ILLINOIS
 SECTION No. 02-00051-00-RS

REVISIONS			
NO.	DATE	BY	REMARKS

SCALE: 1 Inch = 20 feet

DSN. BY: BFK	DATE: 10/15/04	SHEET 14	
DWN. BY: DAN	DATE: 10/15/04		
CHKD: BFK	DATE: 10/15/04		
DWG. NO.	JOB NO. E031013	DGN. NAME: PLAN.01	OF 56 SHTS