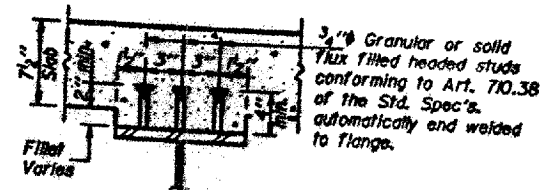
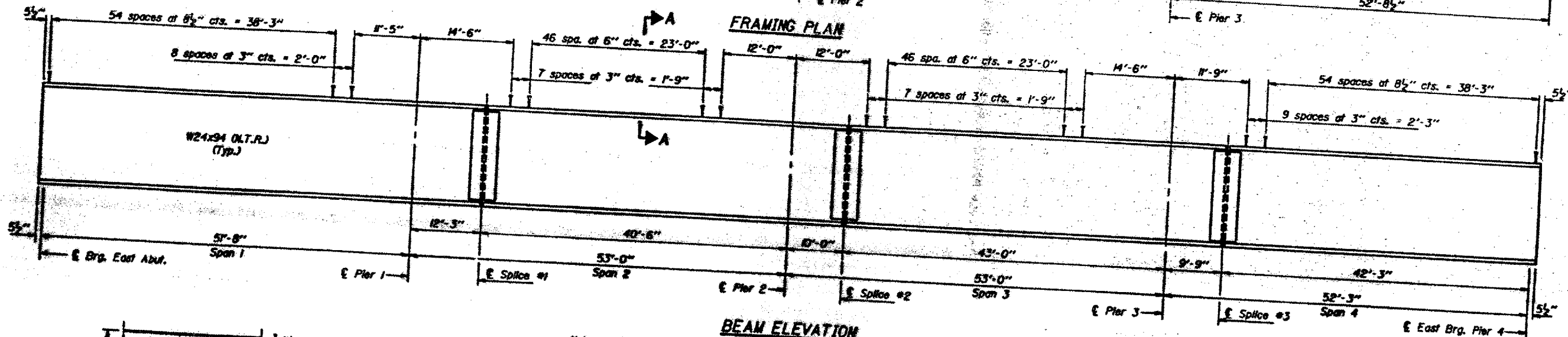
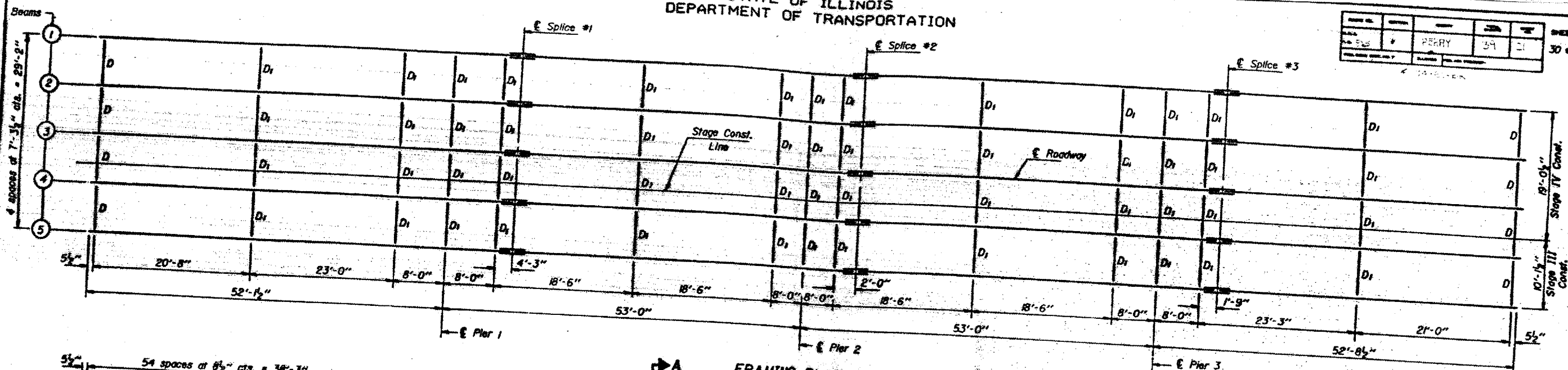


STATE OF ILLINOIS
 DEPARTMENT OF TRANSPORTATION

NO.	DATE	BY	CHKD.	APP.
1		PERRY	SA	DI

SHEET NO. 18
 30 SHEETS



Notes: N.T.R. denotes the members subject to "Notch Toughness Requirements." See sheet #17 for the diaphragm and splice details. The end diaphragms D between Beams 3 and 4 shall be connected during Stage IV Construction. Number of shear studs required for Spans 1 thru 4 = 3735.

DESIGNED BY: K. R. Ghanta
 CHECKED BY: [Signature]
 DRAWN BY: M. Mercado
 APPROVED BY: [Signature]

FOR INFORMATION ONLY:
 BRIDGE NO. 3 STRUCTURE 073-0023

STRUCTURAL STEEL - SPANS 1 THRU 4
 F.A. RTE. 865 SEC. 104BC-BR
 PERRY COUNTY