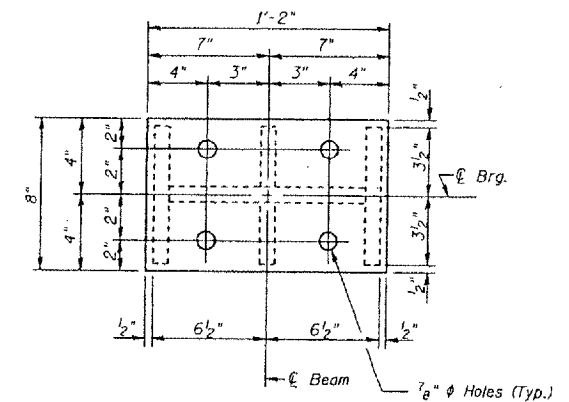
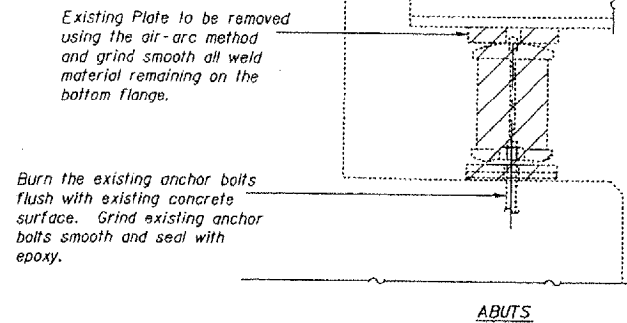
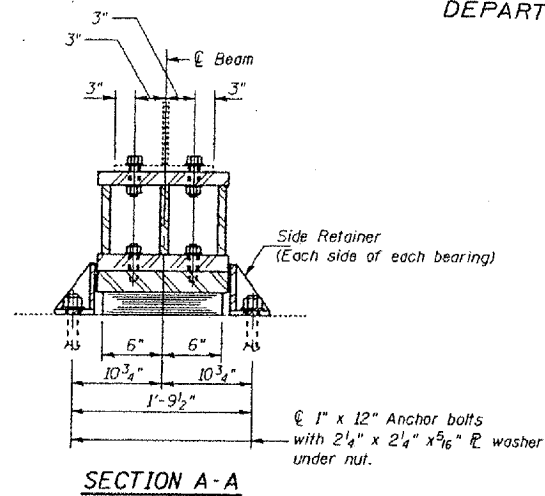
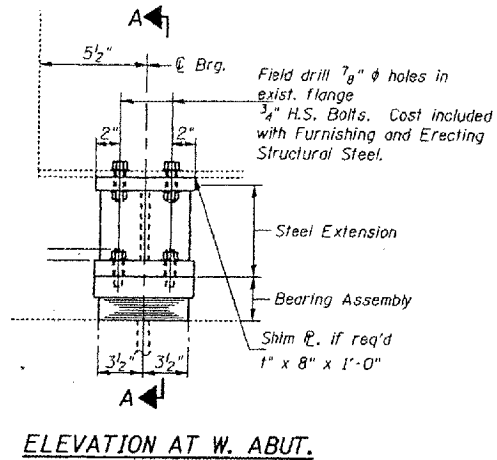


STATE OF ILLINOIS
 DEPARTMENT OF TRANSPORTATION

ROUTE NO.	SECTION	COUNTY	SHEETS	SHEET NO.
F.A.I. 24		MASSAC	234	167
FED. ROAD DIST. NO. 1				
ELIMD				
FED. AID PROJECT				
* 6412.2-L3-1.31RS-1 BSMART FY2002-2				



ELEVATION AT W. ABUT.

SECTION A-A

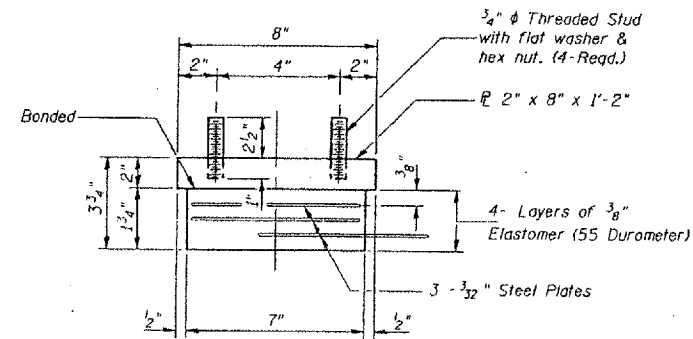
EXISTING BEARING REMOVAL DETAIL

PLAN-TOP & BOTTOM PLATE

TYPE I ELASTOMERIC EXP. BRG.

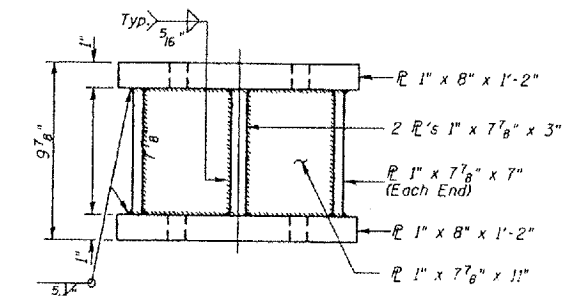
Notes: See sheet 172 for Anchor Bolt installation.

Cost shall be included in the cost of Jack & Remove Existing Bearing.



GIRDER REACTIONS

RP	(K)	24.00
RL	(K)	37.7
Imp.	(K)	11.31
R (Total)	(K)	73.01



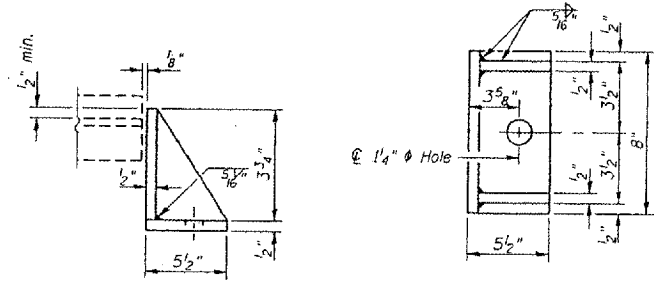
BEARING ASSEMBLY

Note: Shim plates shall not be placed under Bearing Assembly.

STEEL EXTENSION AT WEST ABUT.

BILL OF MATERIAL

Item	Unit	Total
Elastomeric Bearing Assembly Type I	Each	6
Jack and Remove Existing Bearings	Each	6



SIDE RETAINER

Equivalent rolled angle with stiffeners will be allowed in lieu of welded plates. Weight included with Furnishing and Erecting Structural Steel.

Notes:

Prior to ordering any material, the Contractor shall verify in the field all bearing height and shim thickness dimensions. The minimum jack capacity required is 37 Tons. New steel extensions, side retainers, connection bolts, any shim and anchor bolts are included in "Furnishing and Erecting Structural Steel". Hatched areas indicate Jack and Remove Existing Bearings. Existing diaphragm, cutout and bow diaphragm erection shall be coordinated with drilling holes in bottom flange for bearing attachment, if necessary, to provide clearance for the drill.

DESIGNED:	CMW
CHECKED:	TWH
DRAWN:	CMW
CHECKED:	TWH

WEST ABUTMENT

FOR INFORMATION ONLY:
 BRIDGE NO. 2 STRUCTURE 064-0021