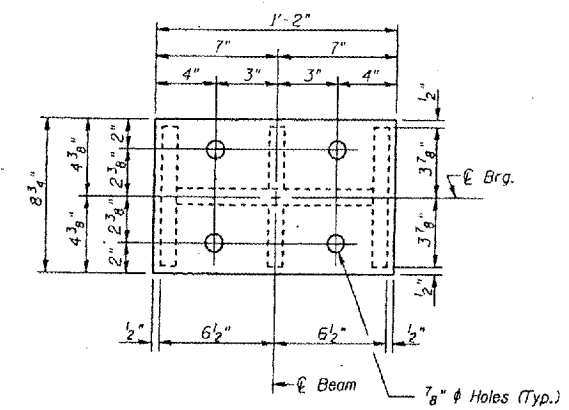
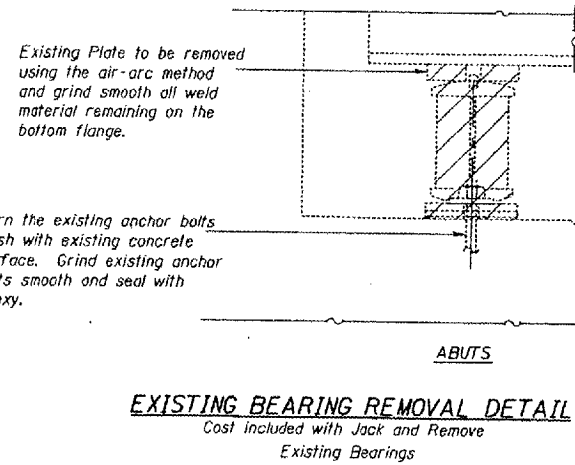
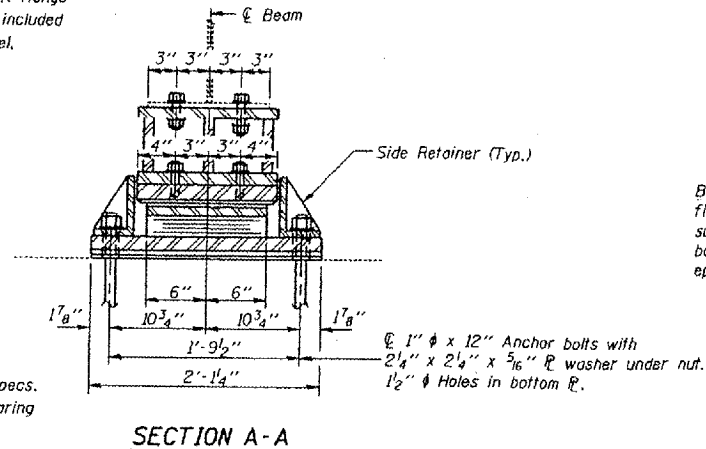
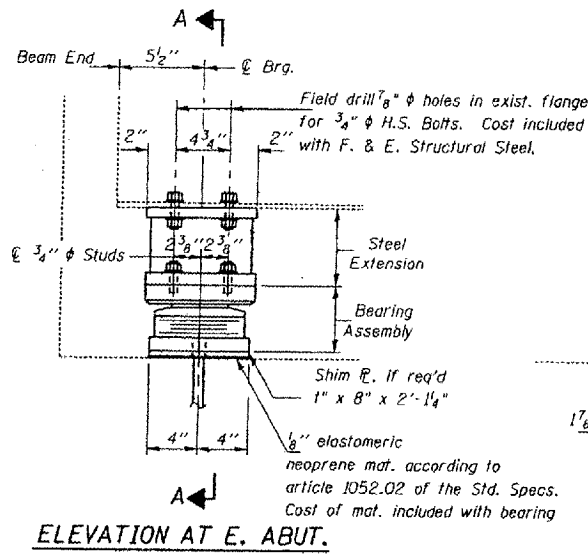


STATE OF ILLINOIS
 DEPARTMENT OF TRANSPORTATION

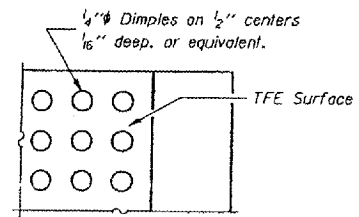
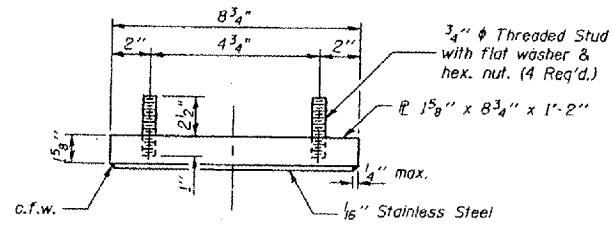
PROJECT NO.	SECTION	DATE	REV.	SHEET NO.
F.A.L. 24	MASSAC	234	168	SHEETS

64(1.2.2-1.3-L3RS-1) BSMART FY2002-2



TYPE II TFE ELASTOMERIC EXP. BRG.

Notes: See sheet 172 for Anchor Bolt Installation.

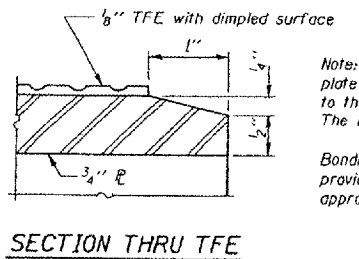
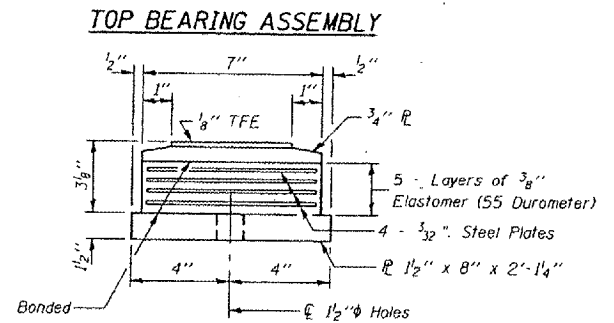
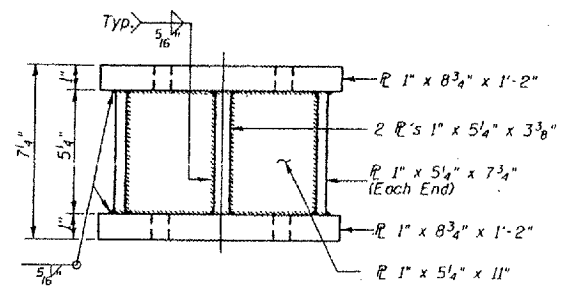


Notes:

Prior to ordering any material, the Contractor shall verify in the field all bearing height and shim thickness dimensions. The minimum jack capacity required is 37 Tons.

New steel extensions, side retainers, connection bolts, any shim and anchor bolts are included in "Furnishing and Erecting Structural Steel".

Hatched areas indicate Jack and Remove Existing Bearings. Existing diaphragm removal and new diaphragm erection shall be coordinated with drilling holes in bottom flange for bearing attachment, if necessary, to provide clearance for the drill.



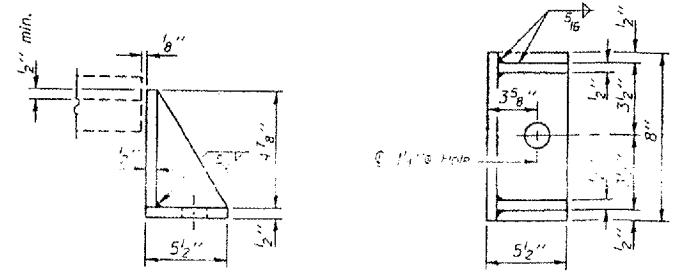
Note: The 1/8" TFE sheet shall be bonded directly to the top steel plate with a two-component, medium viscosity epoxy resin, conforming to the requirements of the Federal Specification MMM-A-134, Type I. The bond agent shall be applied on the full area of the contact surfaces.

Bonding of 1/8" TFE sheet during vulcanizing process will be permitted provided the process and method of adjusting assembly height is approved by the Engineer.

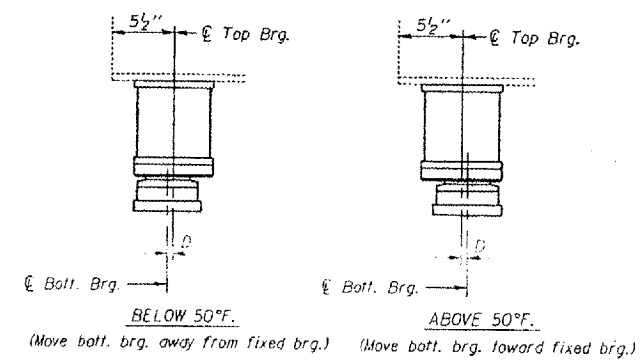
GIRDER REACTIONS

RP	(K)	24.00
RE	(K)	37.70
Imp.	(K)	11.31
R (Total)	(K)	73.01

DESIGNED:	CMW
CHECKED:	TWH
DRAWN:	CMW
CHECKED:	TWH



Equivalent rolled angle with stiffeners will be allowed in lieu of welded plates.



BILL OF MATERIAL

Item	Unit	Total
Elastomeric Bearing Assembly Type II	Each	6
Jack and Remove Existing Bearings	Each	6

FOR INFORMATION ONLY:
 BRIDGE NO. 2 STRUCTURE 064-0021