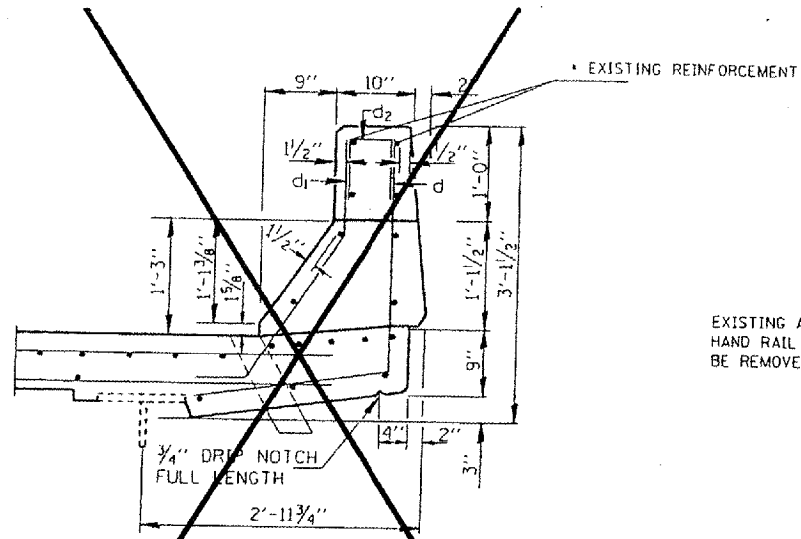
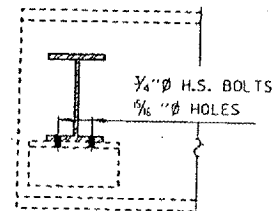


NOTE: d1(E) and d2(E) BARS SPACED AT 12" CTRS.



**SECTION THRU PARAPET**

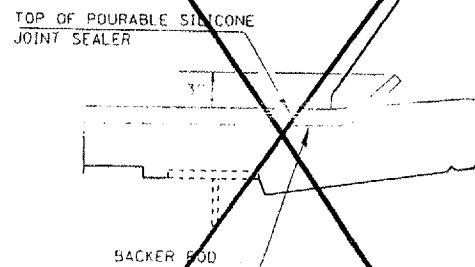
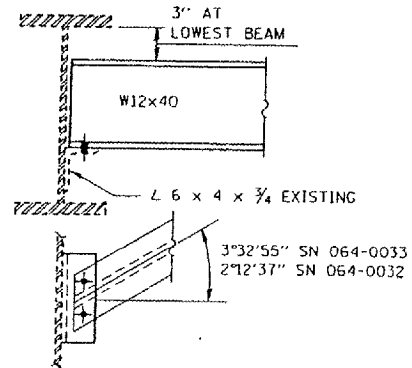
EXISTING REINFORCEMENT EXTENDING INTO REMOVAL AREA SHALL BE CLEANED, STRAIGHTENED AND INCORPORATED INTO THE NEW CONSTRUCTION. COST INCLUDED IN CONCRETE REMOVAL.



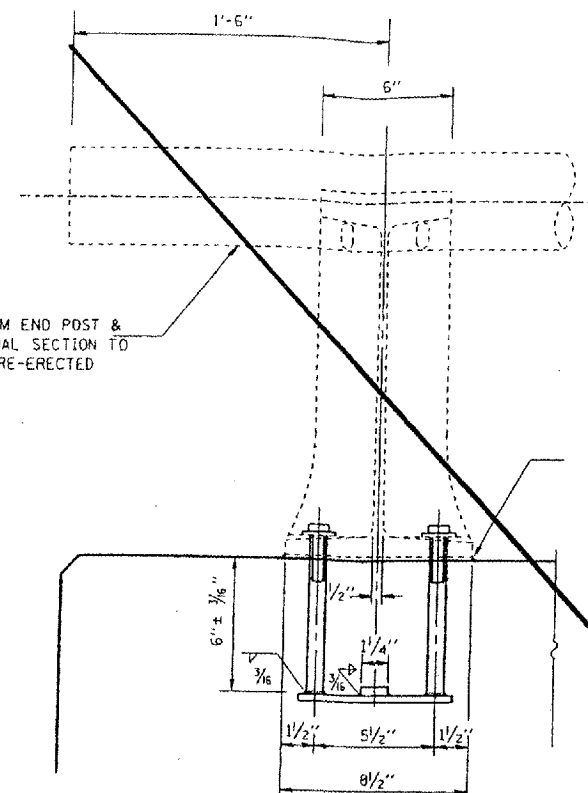
**END DIAPHRAGM**

20 REQUIRED

NOTE: TWO HARDENED WASHERS SHALL BE REQUIRED OVER ALL OVERSIZE HOLES FOR DIAPHRAGMS.



**SILICONE SEAL AT PARAPET**



NOTE: RAIL SHALL BE REMOVED AND RE-ERECTED AS NECESSARY TO ALLOW JOINT REPAIR. COST INCLUDED IN CONCRETE REMOVAL.

2-1/2" Ø x 1/2" CAP SCREW WITH WASHER AND LOCK-WASHER, STNL. STL.

3/8" x 1" x 3" BAR (STNL. STL.)

2-1/2" Ø x 1 1/4" HEX. HD. CAP SCREWS, STD. FLAT WASHERS. (STNL. STL.)

2-3/4" Ø x 2" HEX. HD. CAP SCREWS, STD. FLAT WASHERS (STNL. STL.)

SEAL PERIMETER WITH TWO COMPONENT NON-STAINING GRAY SEALING COMPOUND WITH POLYSULFIDE LIQUID POLYMERS-GUN GRADE WITH PRIMER.

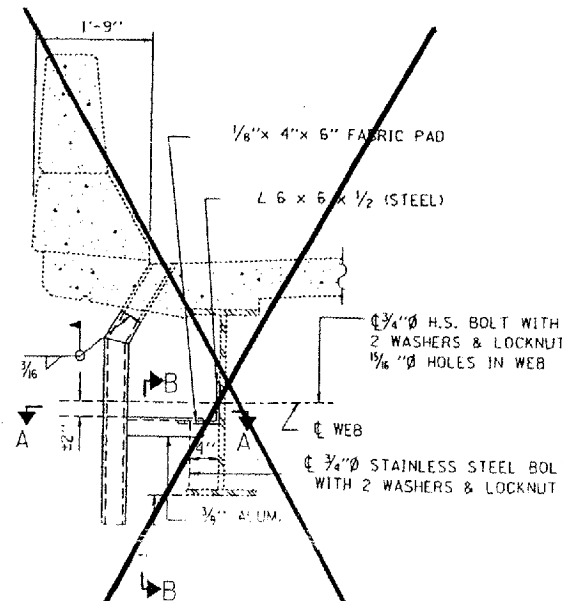
1/8" FABRIC BEARING PAD

2-3/4" Ø WELDED STUDS DRILLED AND TAPPED FOR 1/2"-13 ASTM A 108 (1020)

2-1" Ø WELDED STUDS DRILLED AND TAPPED FOR 3/4"-10 ASTM A 108 (1020)

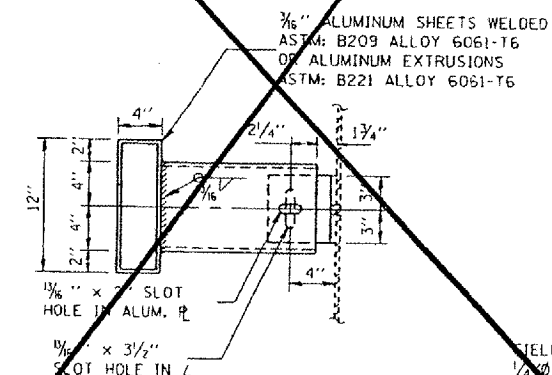
1/2" x 1/2" x 7"

**RAIL POST DETAILS**



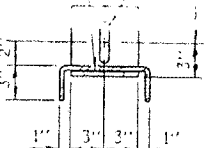
**SECTION AT DRAIN**

( 32 LOCATIONS )

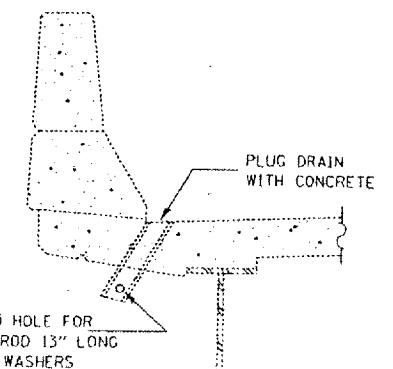


**SECTION A-A**

1/8" FABRIC PAD



**SECTION B-B**



**DRAIN ELIMINATION DETAIL**

( 16 LOCATIONS )

FOR INFORMATION ONLY:

BRIDGE NO. 5 STRUCTURE 064-0032

BRIDGE NO. 6 STRUCTURE 064-0033

CONCRETE SUPERSTRUCTURE, SILICONE JOINT DETAIL, DI

RC ENGINEERS LTD.  
 CONSULTING ENGINEERS - SPRINGFIELD, ILLINOIS

Tue Jul 17 16:27:48 2001  
 c:\proj\rc\rc\proj\064-0032\consult\12-33.dgn LVet-63

DESIGNED	J.C.P.
CHECKED	
DRAWN	I. F.
CHECKED	