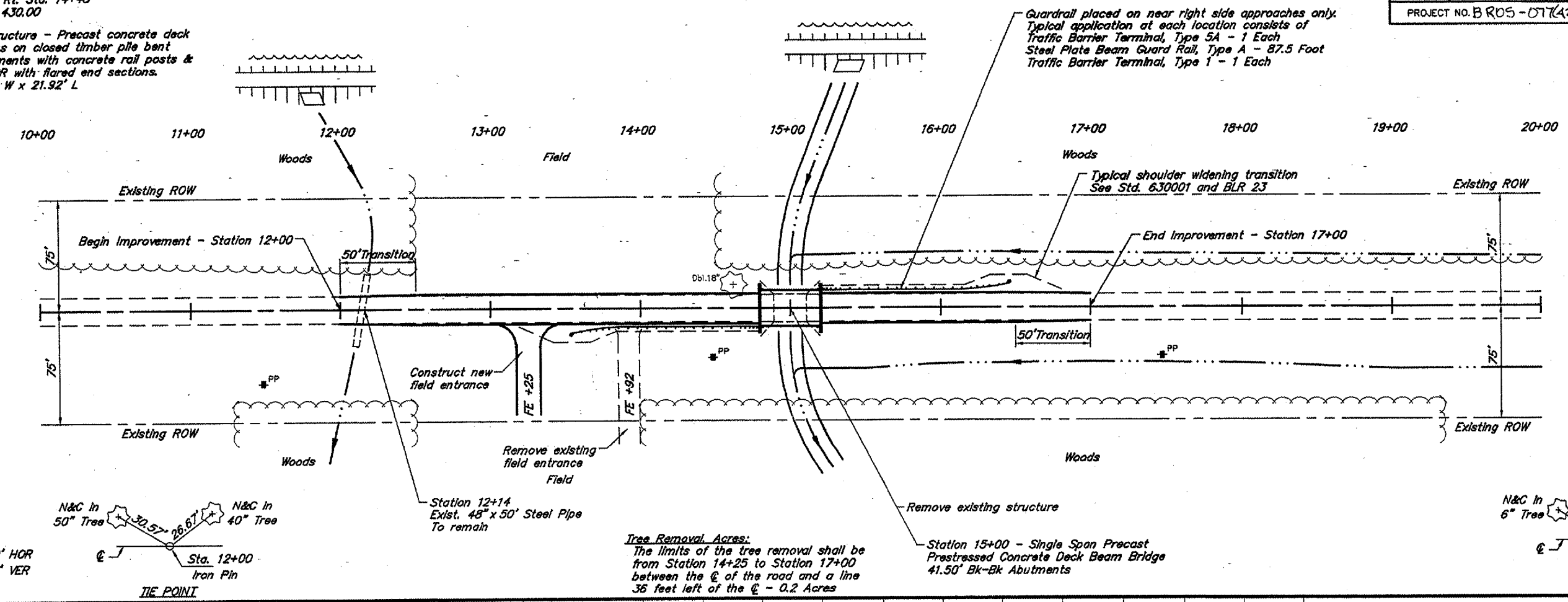


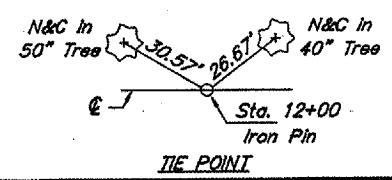
ROUTE	SECTION	COUNTY	TOTAL SHEETS	SHEET NO.
C.H.2	00-00130-00-BR	JACKSON	11	2
PROJECT NO. BR05-07(4) CONTRACT NO. 99209				

B.M. - RR Spike in PP
32.5' Rt. Sta. 14+48
Elev. 430.00

Existing Structure - Precast concrete deck beams on closed timber pile bent abutments with concrete rail posts & SPBGR with flared end sections. 18.8' W x 21.92' L



SCALES:
1" = 80' HOR
1" = 10' VER



Tree Removal Acres:
The limits of the tree removal shall be from Station 14+25 to Station 17+00 between the centerline of the road and a line 36 feet left of the centerline - 0.2 Acres

