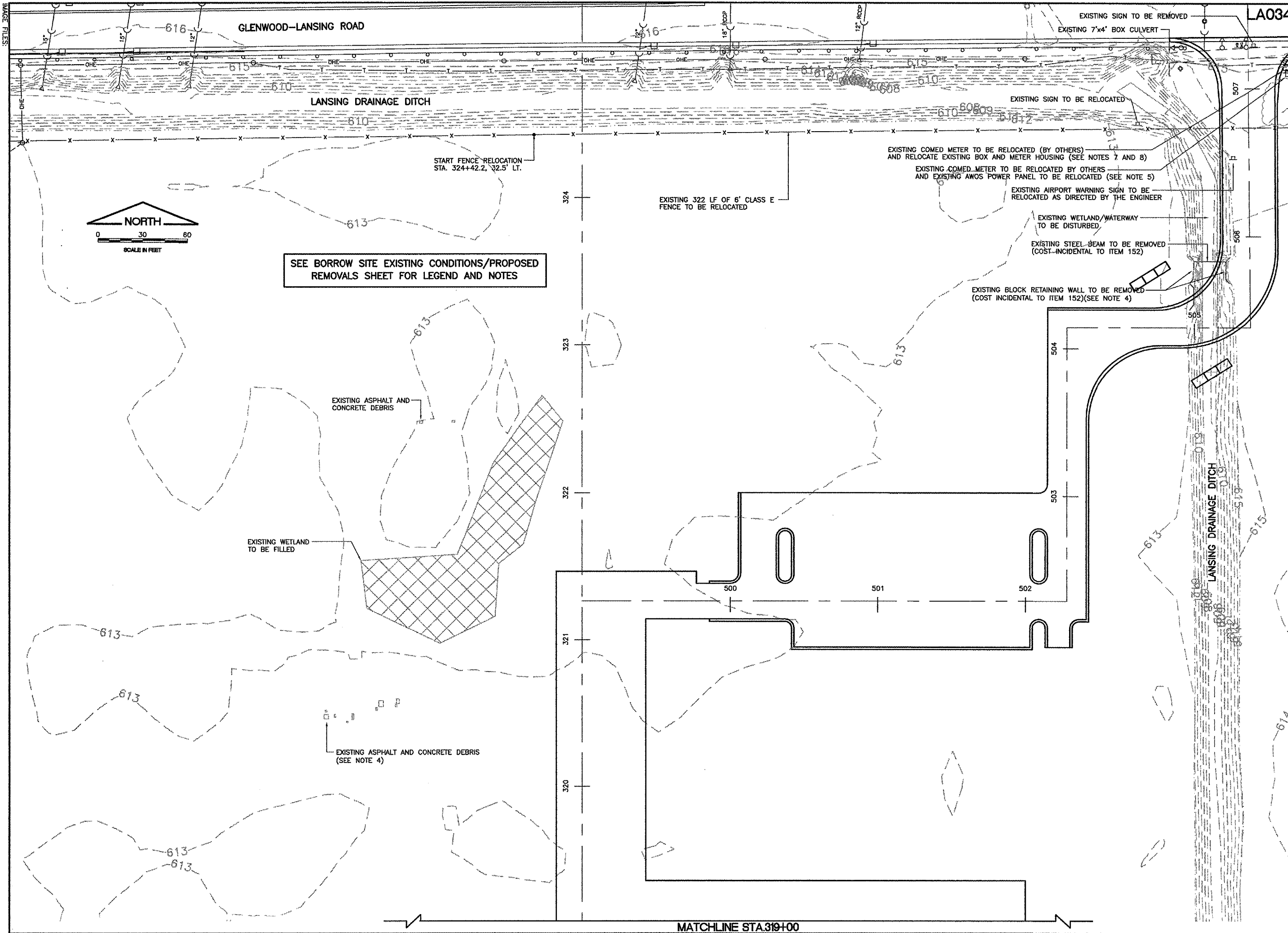


IMAGE FILES

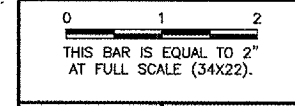


SEE BORROW SITE EXISTING CONDITIONS/PROPOSED REMOVALS SHEET FOR LEGEND AND NOTES

LA034

K:\LansingAp\0329702\draw\sheets\FILE: econd.dwg
 LAYOUT: Layout1
 UPDATE BY: johne
 SURVEY BOOK #
 DATE: Fri 3/18/05 2:19pm
 XREF DWG: nethgr-base.dwg
 tbcint.dwg
 tb.dwg

REVISIONS		
NUMBER	BY	DATE



**LANSING MUNICIPAL AIRPORT
 LANSING, ILLINOIS**

**NORTH QUADRANT SITEWORK - PHASE 1
 AND TAXIWAY G2 EXTENSION**

**EXISTING CONDITIONS/PROPOSED REMOVALS
 NORTH QUADRANT SITEWORK
 AND AUTO PARKING LOT**

© Copyright: DMT, Inc.

GMT
 CRAWFORD, MURPHY & TILLY, INC.
 CONSULTING ENGINEERS
 License No. 184-000613

Lansing Municipal
airport

DESIGN BY:	ARM
DRAWN BY:	JRO
CHECKED BY:	ARM
APPROVED BY:	
DATE:	03/04/05
JOB No:	03297-02
IL PROJECT: IGQ-3329 A.I.P. PROJECT: 3-17-0121-B21	
SHEET 10 OF 50 SHEETS	

MATCHLINE STA.319+00