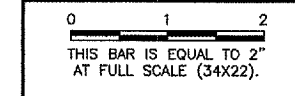
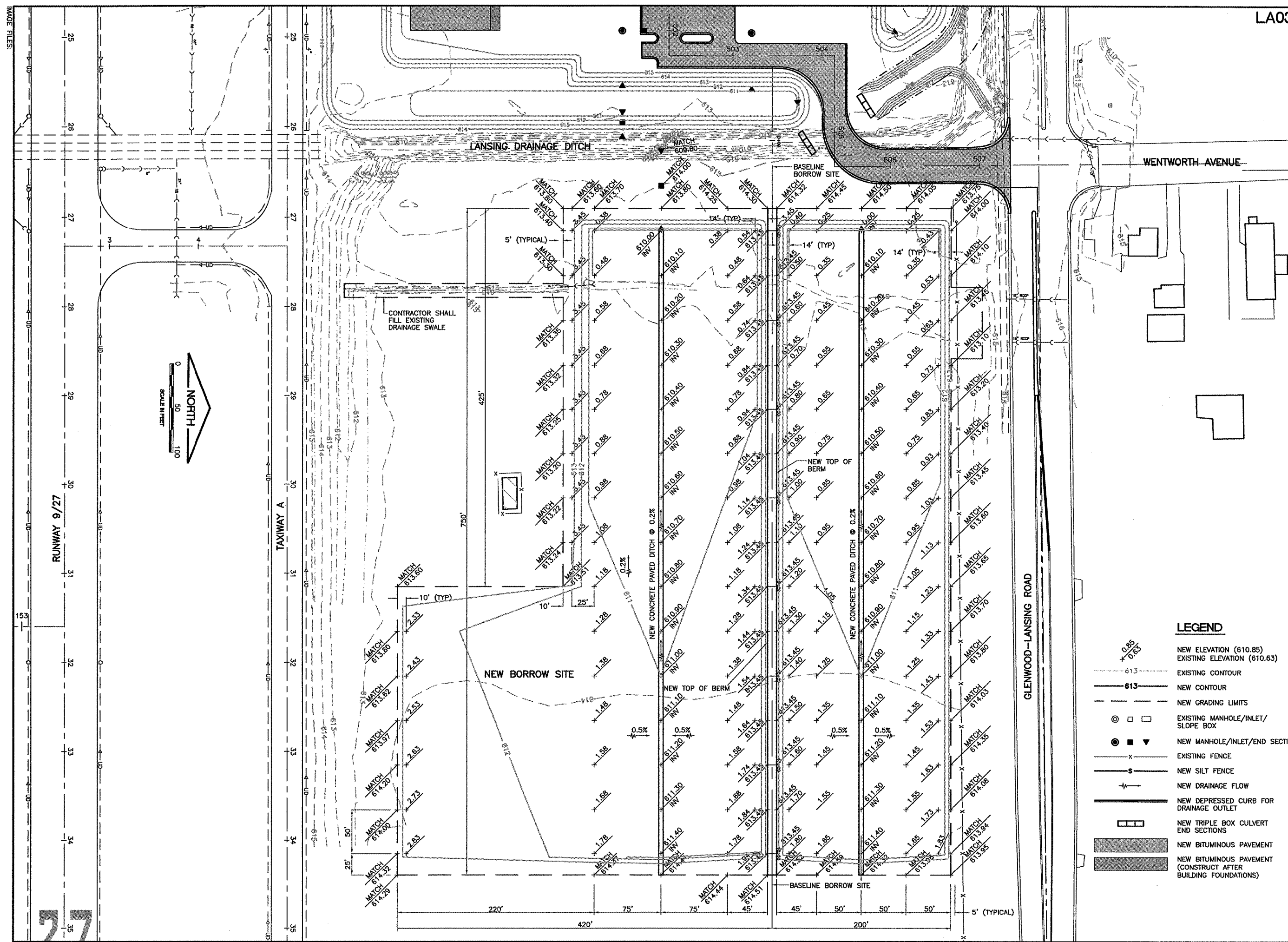


REVISIONS		
NUMBER	BY	DATE



LANSING MUNICIPAL AIRPORT
 LANSING, ILLINOIS
 NORTH QUADRANT SITEWORK - PHASE 1
 AND TAXIWAY G2 EXTENSION
 GRADING PLAN
 BORROW SITE



LEGEND

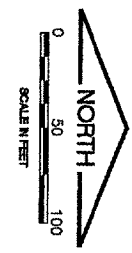
- NEW ELEVATION (610.85)
EXISTING ELEVATION (610.63)
- EXISTING CONTOUR
NEW CONTOUR
- NEW GRADING LIMITS
- EXISTING MANHOLE/INLET/
SLOPE BOX
- NEW MANHOLE/INLET/END SECTION
- EXISTING FENCE
- NEW SILT FENCE
- NEW DRAINAGE FLOW
- NEW DEPRESSED CURB FOR
DRAINAGE OUTLET
- NEW TRIPLE BOX CULVERT
END SECTIONS
- NEW BITUMINOUS PAVEMENT
- NEW BITUMINOUS PAVEMENT
(CONSTRUCT AFTER
BUILDING FOUNDATIONS)

© Copyright CMT, Inc.

CMT
 CRAWFORD, MURPHY & TILLY, INC.
 CONSULTING ENGINEERS
 License No. 184-000613

Lansing Municipal
airport

DESIGN BY:	ARM
DRAWN BY:	JRO
CHECKED BY:	ARM
APPROVED BY:	
DATE:	03/04/05
JOB No:	03297-02
IL PROJECT: IGQ-3329 A.I.P. PROJECT: 3-17-0121-B21	
SHEET 13 OF 50 SHEETS	



RUNWAY 9/27

TAXIWAY A

GLENWOOD-LANSING ROAD

CONTRACTOR SHALL FILL EXISTING DRAINAGE SWALE

NEW BORROW SITE

NEW CONCRETE PAVED DITCH @ 0.2%

NEW CONCRETE PAVED DITCH @ 0.2%

27