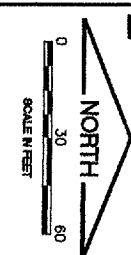
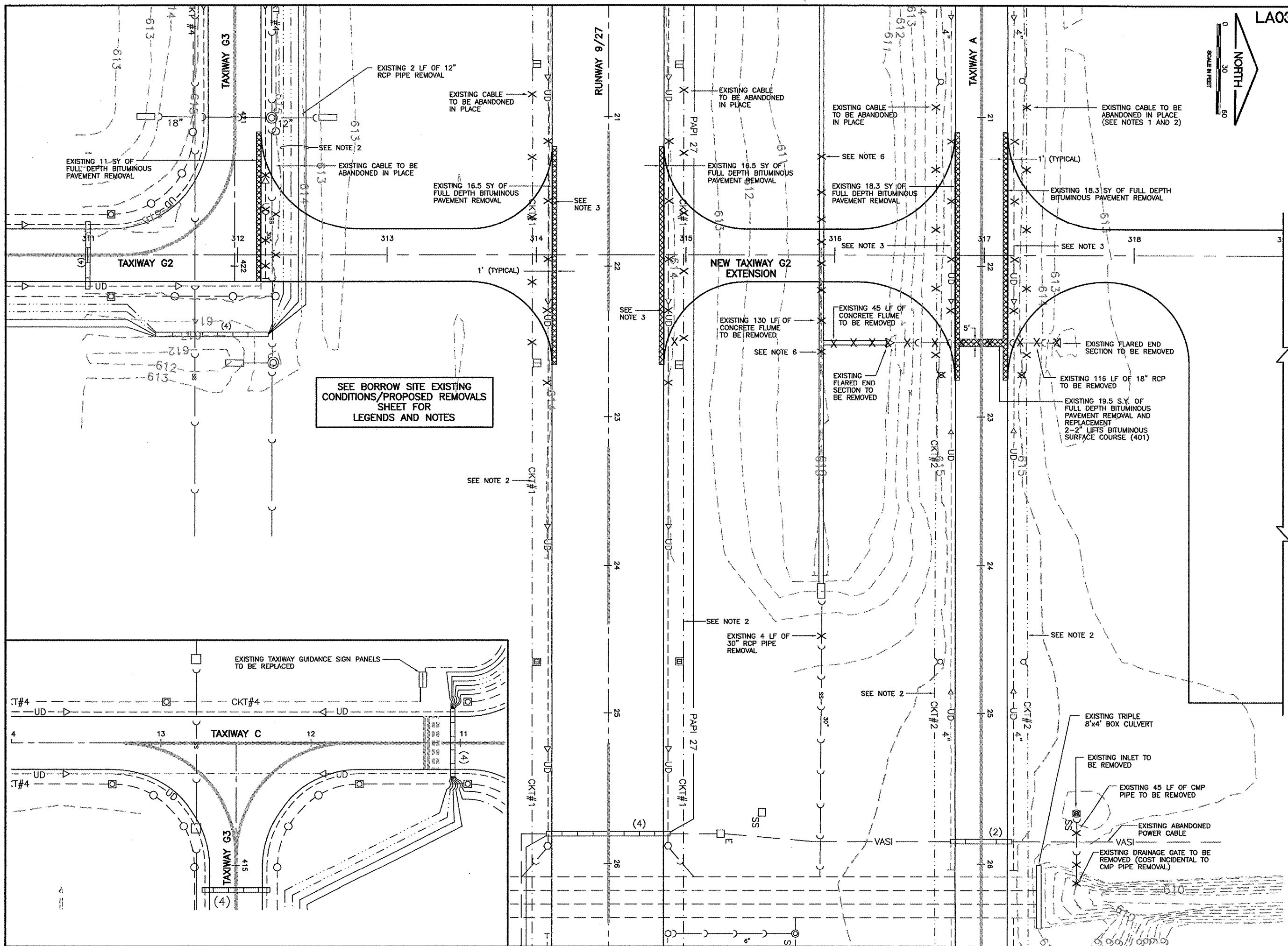
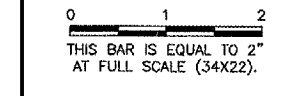


LA034



K:\LansingAp\0329702\draw\sheet\FILE: econd2.dwg  
LAYOUT: Layout1  
UPDATE BY: johse  
SURVEY BOOK #  
DATE: Thu 3/10/05 5:16pm  
XREF DWG: tbcint.dwg  
tb.dwg  
nethgr-base.dwg

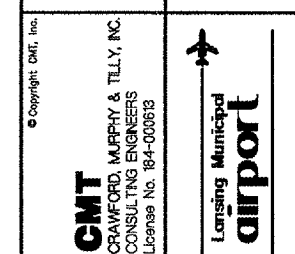
REVISIONS		
NUMBER	BY	DATE



SEE BORROW SITE EXISTING CONDITIONS/PROPOSED REMOVALS SHEET FOR LEGENDS AND NOTES

MATCHLINE STA. 319+00

LANSING MUNICIPAL AIRPORT  
LANSING, ILLINOIS  
NORTH QUADRANT SITEWORK - PHASE 1  
AND TAXIWAY G2 EXTENSION  
EXISTING CONDITIONS/PROPOSED REMOVALS  
TAXIWAY G2 EXTENSION



DESIGN BY:	ARM
DRAWN BY:	JRO
CHECKED BY:	ARM
APPROVED BY:	
DATE:	03/04/05
JOB No:	03297-02
IL PROJECT: IGQ-3329 A.I.P. PROJECT: 3-17-0121-B21	
SHEET 30 OF 50 SHEETS	