

**NOTES**

- THIS A SYSTEM GROUND THAT SHALL INTERCONNECT ALL GROUND RODS WITH NO. 6 1/C SOLID COPPER AWG.
- ALL ELECTRICAL IMPROVEMENTS SHALL BE IN ACCORDANCE WITH THE FOLLOWING STANDARDS:
  - IDOT STANDARD 814001 CONCRETE HANDHOLES
  - IDOT STANDARD 857001 STANDARD PHASE DESIGNATION DIAGRAMS AND PHASE SEQUENCES
  - IDOT STANDARD 877007-02 STEEL MAST ARM ASSEMBLY AND POLE
  - IDOT STANDARD 878001-03 CONCRETE FOUNDATION DETAILS
  - IDOT STANDARD 880006 TRAFFIC SIGNAL MOUNTING DETAILS
  - IDOT STANDARD 880001 SPAN WIRE MOUNTED SIGNALS AND FLASHING BEACON INSTALLATION
  - IDOT STANDARD 886001 DETECTOR LOOP INSTALLATIONS
  - IDOT STANDARD 886006 TYPICAL LAYOUTS FOR DETECTION LOOPS

**REVISIONS**

NUMBER	BY	DATE

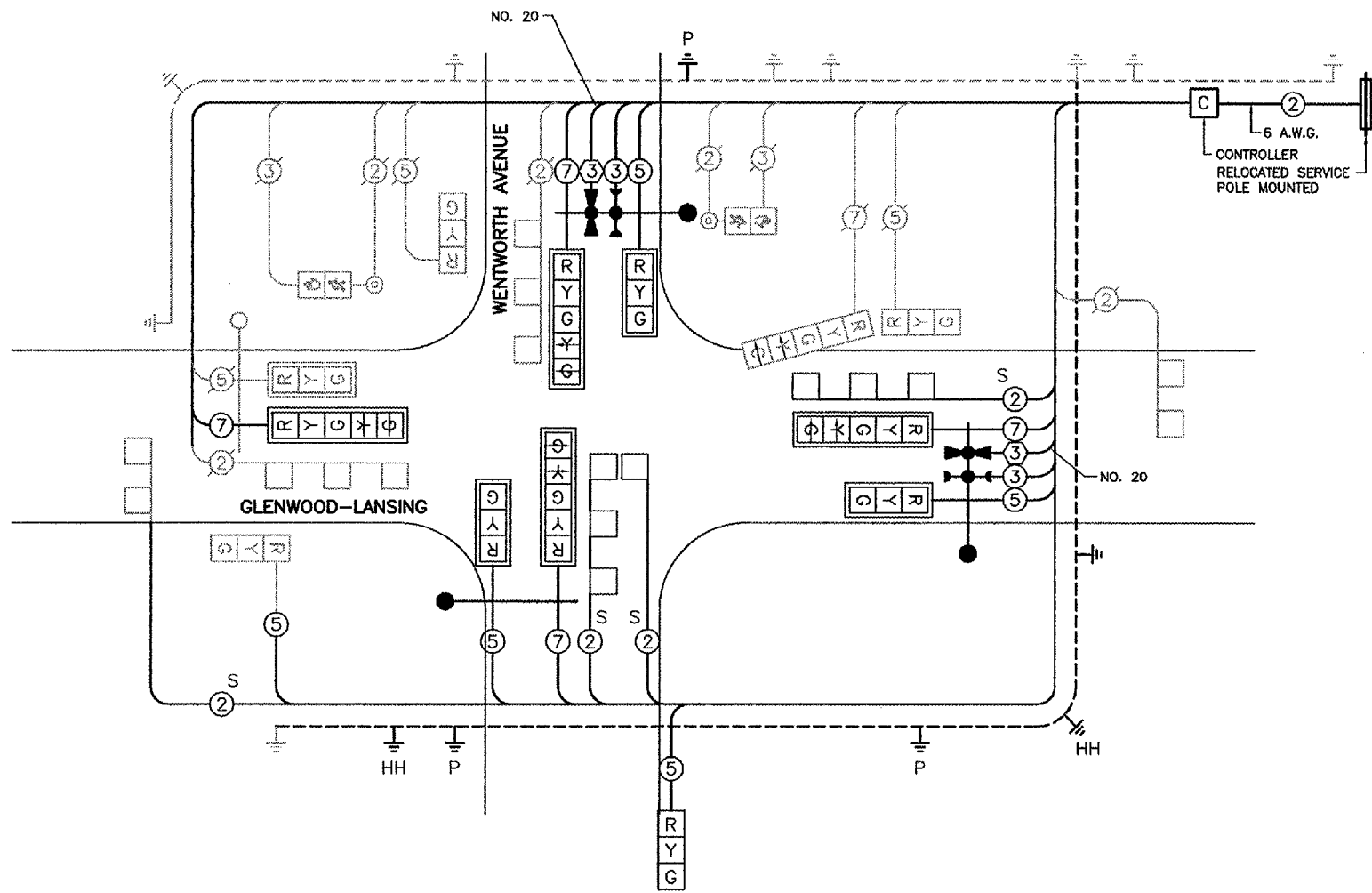
0 1 2  
 THIS BAR IS EQUAL TO 2"  
 AT FULL SCALE (34X22).

**LANSING MUNICIPAL AIRPORT  
 LANSING, ILLINOIS  
 NORTH QUADRANT SITEMARK - PHASE 1  
 AND TAXIWAY G2 EXTENSION  
 INTERSECTION IMPROVEMENTS  
 TRAFFIC SIGNAL INSTALLATION**

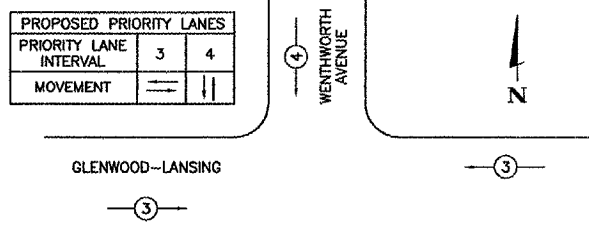
© Copyright CMT, Inc.  
**CMT**  
 CRANFORD, MURPHY & TILLY, INC.  
 CONSULTING ENGINEERS  
 License No. 84-000618  
 Lansing Municipal  
**airport**

DESIGN BY: DKP  
 DRAWN BY: JRO  
 CHECKED BY: ARM  
 APPROVED BY:  
 DATE: 03/04/05  
 JOB No: 03297-02

IL PROJECT: IGQ-3329  
 A.I.P. PROJECT: 3-17-0121-B21

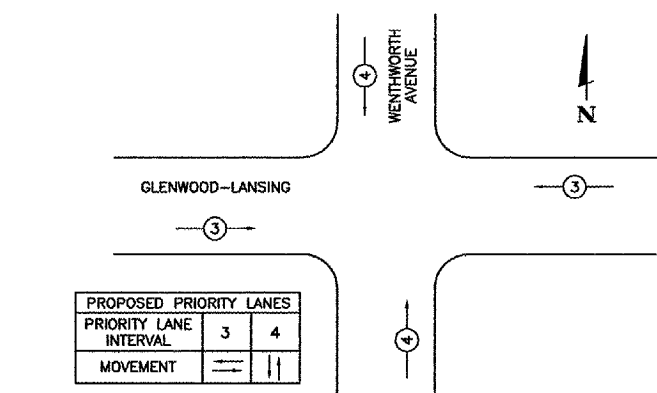


**CABLE PLAN**  
 N.T.S.



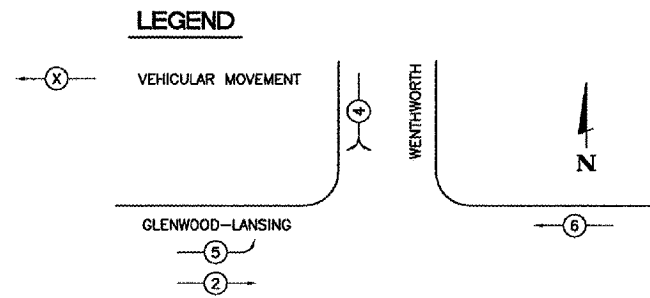
**EXISTING EMERGENCY VEHICLE PREEMPTION SEQUENCE**

(N.T.S)



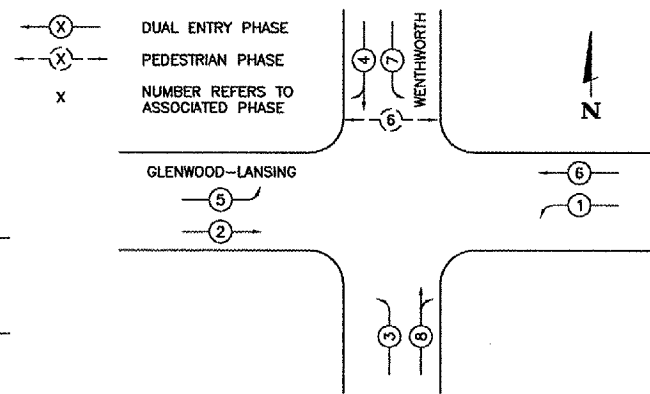
**PROPOSED EMERGENCY VEHICLE PREEMPTION SEQUENCE**

(N.T.S)



**EXISTING CONTROLLER SEQUENCE**

(N.T.S)



**PROPOSED CONTROLLER SEQUENCE**

**PHASE DESIGNATION DIAGRAM**

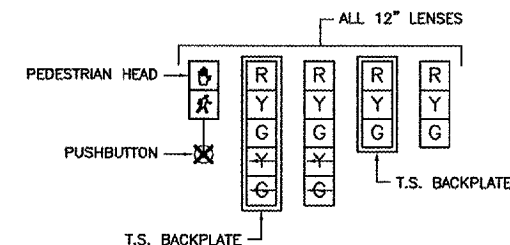
DUAL ENTRY-ALL LEGS PROTECTED/PERMISSIVE LEFT TURN PHASING  
 (N.T.S)

**CABLE PLAN LEGEND**

- R 12' TRAFFIC SIGNAL SECTION
- C CONTROLLER CABINET
- VEHICLE DETECTOR, INCLUDING LOOP
- (3) DENOTES NUMBER OF CONDUCTORS (NEW)  
 ALL LOOP DETECTOR CABLE TO BE TWISTED AND SHIELDED. ALL CABLE NO. 14 EXCEPT AS INDICATED
- SIGNAL FACE
- SIGNAL FACE WITH BACKPLATE
- GROUNDING SYSTEM CONNECTION
- S SHIELDED AND TWISTED
- EXISTING SERVICE
- PEDESTRIAN SIGNAL HEAD
- PEDESTRIAN PUSHBUTTON
- EMERGENCY VEHICLE SYSTEM LIGHT DETECTOR
- ELECTRIC CABLE NO. 20 A.W.G.
- CONFIRMATION BEACON

**SIGNAL LENSES**

- R RED
- Y YELLOW
- G GREEN
- Y-G YELLOW TURN INDICATOR
- G-G GREEN TURN INDICATOR



**SIGNAL FACES**