



HANSON PROFESSIONAL SERVICES INC.

815 Commerce Drive, Suite 200  
Oak Brook, Illinois 60523  
Telephone: 630.990.3800  
Fax: 630.990.3801



JOLIET REGIONAL PORT DISTRICT

1 Hangar Road  
Romeoville, Illinois 60446  
Telephone: 815.838.9497  
Fax: 815.838.9524

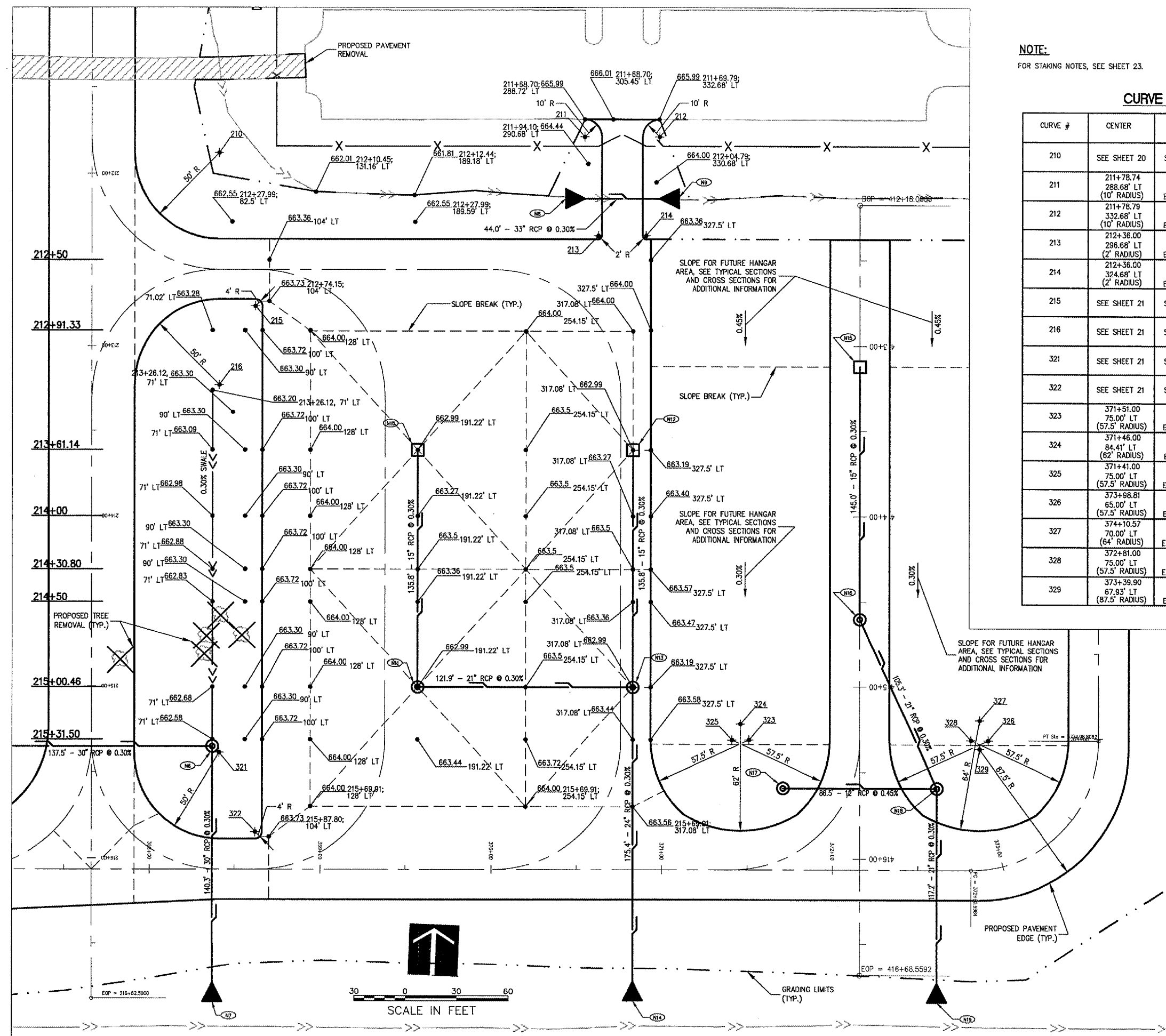
EXTEND TAXWAY E; CONSTRUCT  
GA APRON, AVGAS FUELING APRON  
AND AUTO PARK 100

AIP PROJECT NO. 3-17-0140-B38  
IDA PROJECT NO. LOT-3441

NOTE:  
FOR STAKING NOTES, SEE SHEET 23.

CURVE DATA

CURVE #	CENTER	P.C.	P.T.
210	SEE SHEET 20	SEE SHEET 20	SEE SHEET 20
211	211+78.74 288.68' LT (10' RADIUS)	211+68.74 288.68' LT EL = 665.99	211+78.74 298.68' LT EL = 665.59
212	211+78.79 332.68' LT (10' RADIUS)	211+69.79 332.68' LT EL = 668.00	211+78.79 322.68' LT EL = 665.59
213	212+36.00 296.68' LT (2' RADIUS)	212+36.00 296.68' LT EL = 663.26	212+38.00 296.68' LT EL = 663.18
214	212+36.00 324.68' LT (2' RADIUS)	212+36.00 322.68' LT EL = 663.26	212+38.00 324.68' LT EL = 663.18
215	SEE SHEET 21	SEE SHEET 21	SEE SHEET 21
216	SEE SHEET 21	SEE SHEET 21	SEE SHEET 21
321	SEE SHEET 21	SEE SHEET 21	SEE SHEET 21
322	SEE SHEET 21	SEE SHEET 21	SEE SHEET 21
323	371+51.00 75.00' LT (57.5' RADIUS)	370+93.50 75.00' LT EL = 663.58	371+12.67 32.14' LT EL = 663.19
324	371+46.00 84.41' LT (62' RADIUS)	371+12.67 32.14' LT EL = 663.19	371+79.33 32.14' LT EL = 663.27
325	371+41.00 75.00' LT (57.5' RADIUS)	371+79.33 32.14' LT EL = 663.27	371+98.50 75.00' LT EL = 663.55
326	373+98.81 65.00' LT (57.5' RADIUS)	372+33.50 75.00' LT EL = 663.55	372+52.67 32.14' LT EL = 663.27
327	374+10.57 70.00' LT (64' RADIUS)	372+52.67 32.14' LT EL = 663.27	373+35.73 17.50' LT EL = 663.27
328	372+81.00 75.00' LT (57.5' RADIUS)	373+35.73 17.50' LT EL = 663.27	373+98.81 17.50' LT EL = 663.56
329	373+39.90 67.83' LT (87.5' RADIUS)	372+85.05 17.64' RT EL = 663.18	373+94.76 17.63' RT EL = 663.18



**LEGEND**

- > EXISTING UNDERDRAIN
- > EXISTING STORM SEWER
- > EXISTING TELEPHONE
- > EXISTING GAS
- > EXISTING ELECTRIC
- > EXISTING WATER MAIN
- > EXISTING FENCE
- > EXISTING SWALE
- > PROPOSED STORM SEWER
- > PROPOSED SWALE
- > PROPOSED FENCE
- EXISTING STORM SEWER MANHOLE
- EXISTING FLARED END SECTION
- EXISTING UNDERDRAIN INSPECTION HOLE
- EXISTING UNDERDRAIN CLEAN OUT
- PROPOSED STORM SEWER MANHOLE
- PROPOSED FLARED END SECTION

No.	Drawing Issue Description	Date	By

Date: \_\_\_\_\_  
 Sheet Title: MARCH 25, 2005  
**STAKING PLAN  
 ALIGNMENT 200  
 STA 212+50 TO STA 215+31.50  
 EAST LIMITS**

840-04D8041  
 Project Number  
 LDH 02/14/05  
 Layout By Date  
 LDH/TMM 02/14/05  
 Designed By Date  
 RMH 03/11/05  
 Reviewed By Date  
 LDH | KLK | ---  
 Drawn By Sheet No.

I:\04\005\020401\04D8041\DRAWINGS\05-STAING PLAN\05 MAR 28, 2005 12:14PM TMM