

REINFORCING STEEL BAR TYPE

| REINFORCING BARS SCHEDULE | | | | | |
|---------------------------|--------------------|------------|-------|------|------------------------------|
| TYPE | QUANTITY PER INLET | DIMENSIONS | | SIZE | APPROX. WT. OF BARS IN INLET |
| | | A | B | | |
| A | 2 | 3'-4" | 2'-4" | #5 | 16.7 |

INLET NOTES

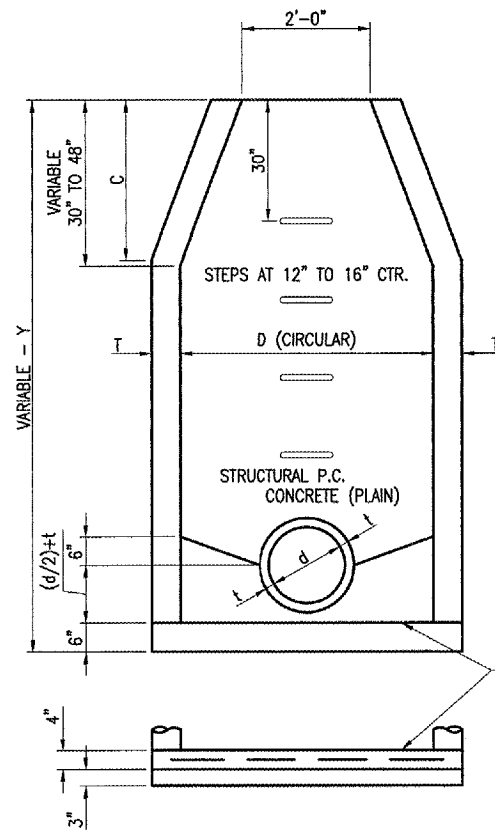
INLET TO BE CONSTRUCTED OF STRUCTURAL P.C. CONCRETE. THE CONTRACT UNIT PRICE PER INLET SHALL INCLUDE THE FRAME, GRATE AND STEPS IN PLACE AND COMPLETE PER UNIT.

1/2" CHAMFER TO BE USED ON ALL EXPOSED CORNERS OF INLETS. BARS TO BE INSTALLED 2" FROM FACE OF WALLS.

THE FRAME AND GRATE SHALL BE NEENAH R-3475-E, DEETER 2425-E.

"H" SHALL BE EQUAL TO THE PROPOSED PAVEMENT THICKNESS AND NOT LESS THAN THE ATTACHED MINIMUMS. TYPE A _____ 9" MINIMUM.

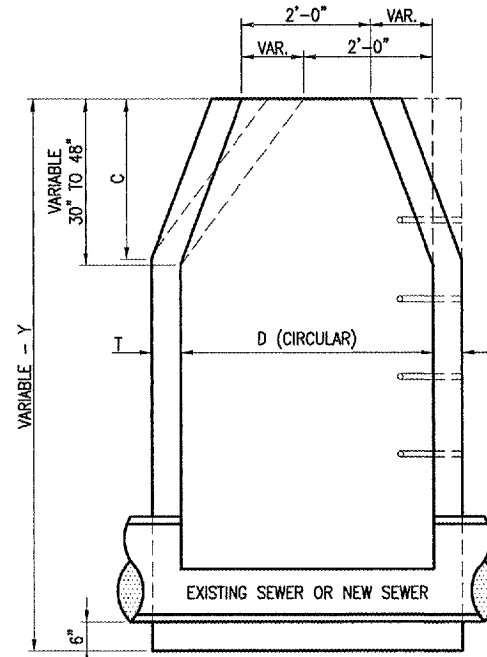
INLET STEPS SHALL BE NEENAH R-1980-1. 12" TO 15" C.C. STEPS TO BE INSTALLED WHEN Y IS GREATER THAN 5' COST. THE COST OF THE STEPS SHALL BE INCLUDED IN THE CONTRACT UNIT PRICE FOR EACH INLET.



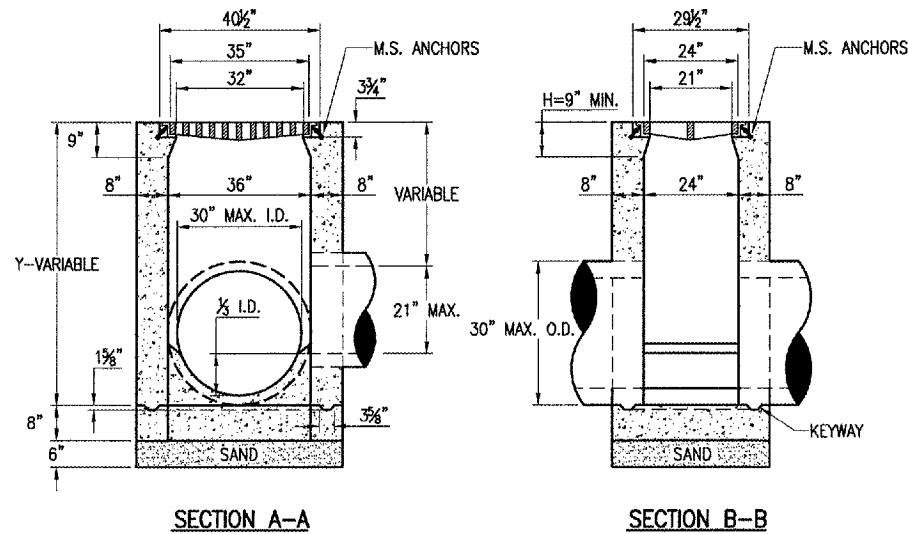
BOTTOM TO BE EITHER STRUCTURAL P.C. CONCRETE (PLAIN) OR PRECAST REINFORCED CONCRETE WITH SAND BEDDING

MANHOLE DETAILS

"NOT TO SCALE"



| ALT. MATERIAL FOR WALLS | D | C | T | D | C | T |
|--------------------------------|----|-------|----|----|-------|----|
| PRECAST REINFORCED CONC. RINGS | 4' | 2'-6" | 5" | 5' | 4'-0" | 6" |
| MONOLITHIC CONCRETE | 4' | 2'-6" | 6" | 5' | 4'-0" | 8" |



SECTION A-A

SECTION B-B

INLET TYPE A

MANHOLE NOTES

- MANHOLE TO BE CONSTRUCTED OF STRUCTURAL P.C. CONCRETE. THE CONTRACT UNIT PRICE PER MANHOLE SHALL INCLUDE THE FRAME, LID AND STEPS PER UNIT.
- THE FRAME AND LID SHALL BE NEENAH R-3492 OR EQUAL, ANCHORED TO THE MANHOLE STRUCTURE.
- MANHOLE STEPS SHALL BE NEENAH R-1980-1. 12" TO 15" C.C. STEPS TO BE INSTALLED WHEN Y IS GREATER THAN 5'. THE COST OF THE STEPS SHALL BE INCLUDED IN THE CONTRACT UNIT PRICE FOR EACH MANHOLE.
- THE PROPOSED MANHOLES WILL BE PAID FOR UNDER THE FOLLOWING:
ITEM AR751540 "MANHOLE 4' " - 1 EACH.

| DATE | REVISION | BY |
|------|----------|----|
| | | |
| | | |
| | | |

ST. LOUIS REGIONAL AIRPORT



EAST ALTON, ILLINOIS

IL PROJ.: ALN-3355

| | | | |
|-------------|--------------|-----|----------|
| Project No. | 637-04RDD | TLW | 03/08/04 |
| Filename | R-531DRN.DWG | TLW | 03/08/04 |
| Scale | NOT TO SCALE | WJM | 06/23/04 |
| Date | 03/08/04 | | |
| LAYOUT | | | |
| DRAWN | | | |
| REVIEWED | | | |



Hanson Professional Services Inc.
1325 South State Street
Springfield, IL 62703-2886
Offices Nationwide

CONSTRUCT T-HANGAR
ACCESS ROAD

PROPOSED
DRAINAGE DETAILS