

**LIGHTING FIXTURE SCHEDULE**

FIXT. TYPE	DESCRIPTION	MANUFACTURER & CATALOG NO.	LAMPS/ WATTS	VOLTS	MOUNTING	REMARKS
F1	HID ARCHITECTURAL AREA LIGHT, RUGGED ALUMINUM HOUSING, EXTRUDED WELDED DOOR FRAME, ANODIZED, SEGMENTED TYPE 2 ROADWAY OPTICS, QUAD VOLTAGE HPF CWA TYPE BALLAST, GASKETED AND VENTED TO IP-64 STANDARDS, UL LISTED FOR WET LOCATIONS, DOUBLE FUSE, DARK BRONZE CORROSION RESISTANT FINISH.	LITHONIA: AS2-250M-SR2-240-RPA-ASKMA2-DF-CR OR APPROVED EQUAL	1-250W MH ANSI CODE NO: M58, 295 TOTAL INPUT WATTS	240	MOUNT ON 30'-0" TAPERED ROUND STEEL POLE	POLE TO HAVE A MINIMUM 7 GAUGE WALL THICKNESS WITH AN EPA RATING OF 17.5 AT 100 MPH WIND SPEED WITH A 1.3 GUST FACTOR LITHONIA: RTS 30 8-0F OR EQUAL PROVIDE VIBRATION DAMPERS
F2						
F3						
F4						

**ELECTRICAL KEYED NOTES:**

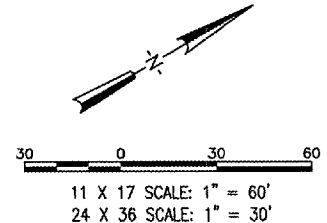
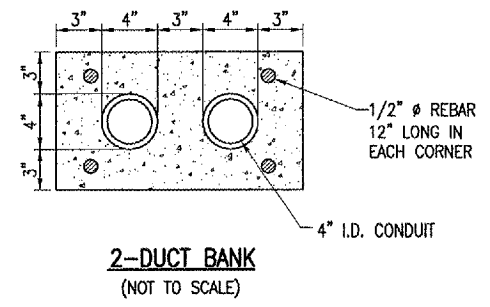
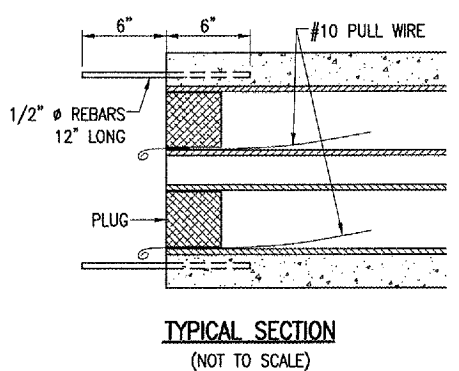
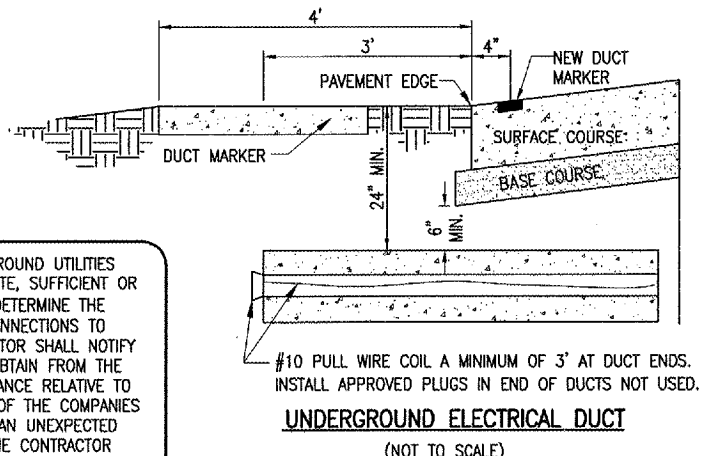
- 1 3/C #8 XLP-USE, 600V, UG CABLE IN UNIT DUCT, ITEM AR108658.
- 2 4" DUCT INSTALLED BY DIRECTIONAL BORING METHOD (48 L.F.), ITEM AR110014.
- 3 USE EXISTING SPARE METER BASE FOR NEW ELECTRIC SERVICE FOR PANELBOARD FEED. FURNISH AND INSTALL 60 AMP, 2P SERVICE BREAKER.
- 4 2-WAY CONCRETE ENCASED DUCT (28 L.F.), ITEM AR110502.

**SCHEDULE OF LIGHTS**

FIXTURE	STATION	OFFSET
F1	1+35	19' RT
F2	2+85	19' RT
F3	4+90	44' RT
F4	6+05	19' RT

THE LOCATION, SIZE AND TYPE OF MATERIAL OF EXISTING UNDERGROUND UTILITIES INDICATED ON THE PLANS IS NOT REPRESENTED AS BEING ACCURATE, SUFFICIENT OR COMPLETE. IT SHALL BE THE CONTRACTOR'S RESPONSIBILITY TO DETERMINE THE ACTUAL LOCATION OF ALL SUCH FACILITIES, INCLUDING SERVICE CONNECTIONS TO UNDERGROUND UTILITIES. PRIOR TO CONSTRUCTION, THE CONTRACTOR SHALL NOTIFY THE UTILITY COMPANIES OF HIS OPERATIONAL PLANS AND SHALL OBTAIN FROM THE RESPECTIVE UTILITY COMPANIES DETAILED INFORMATION AND ASSISTANCE RELATIVE TO THE LOCATION OF THEIR FACILITIES AND THE WORKING SCHEDULE OF THE COMPANIES FOR REMOVAL OR ADJUSTMENT WHERE REQUIRED. IN THE EVENT AN UNEXPECTED UTILITY INTERFERENCE IS ENCOUNTERED DURING CONSTRUCTION, THE CONTRACTOR SHALL IMMEDIATELY NOTIFY THE UTILITY COMPANY OF JURISDICTION. THE ENGINEER SHALL ALSO BE IMMEDIATELY NOTIFIED. ANY SUCH MAINS AND SERVICES SHALL BE RESTORED TO SERVICE AT ONCE AND PAID FOR BY THE CONTRACTOR AT NO ADDITIONAL COST TO THE CONTRACT.

CALL J.U.L.I.E. FOR UTILITY INFORMATION AT 1-800-892-0123.



**LEGEND**

- PROPOSED LIGHT FIXTURE AND POLE, SEE LIGHTING FIXTURE SCHEDULE
- PROPOSED UNDERGROUND ELECTRICAL CABLE IN UNIT DUCT
- EXISTING UNDERGROUND ELECTRICAL CABLE IN UNIT DUCT
- PROPOSED LIGHTING CONTROLLER
- PROPOSED PANELBOARD
- PROPOSED 2-WAY CONCRETE ENCASED DUCT
- PROPOSED 4" DUCT, INSTALLED BY DIRECTIONAL BORE
- EXISTING WATER LINE

ST. LOUIS REGIONAL AIRPORT  
EAST ALTON, ILLINOIS  
St. Louis Regional Airport  
IL PROJ: ALN-3355

FILED: 837-04RDD  
R-141ELE.DWG  
Scale: 1"=30'  
Date: 03/08/04

LAYOUT: TLW 03/08/04  
DRAWN: TLW 03/08/04  
REVIEWED: WJM 06/23/04

**HANSON**  
Hanson Professional Services Inc.  
1525 Schrockville Rd.  
Springfield, IL 62703-2886  
Offices Nationwide

CONSTRUCT T-HANGAR ACCESS ROAD  
PROPOSED ROADWAY LIGHTING PLAN AND ELECTRICAL DUCT DETAILS

**15**  
15 of 34 sheets

FEB 15, 2005 11:42 AM DPE I:\AIRPORTS\STLOUIS\837-04RDD\AIRPORT\SHEETS\R-141ELE.DWG - Layout1