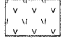
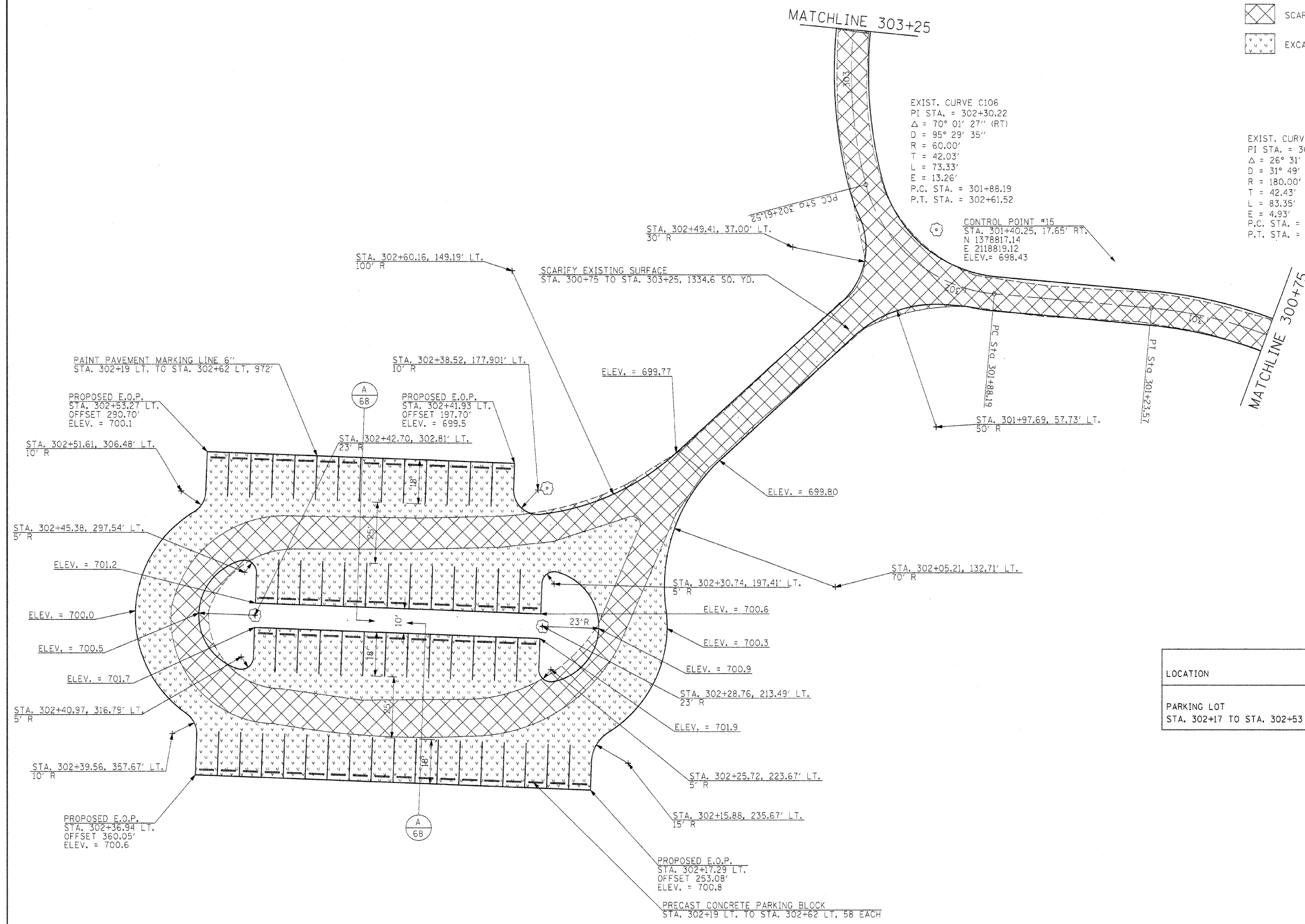
 SCARIFY EXISTING SURFACE  
 EXCAVATION (SPECIAL)

EXIST. CURVE C106  
 PI STA. = 302+30.22  
 $\Delta = 70^\circ 01' 27''$  (RT)  
 $D = 95^\circ 29' 35''$   
 $R = 60.00'$   
 $T = 42.03'$   
 $L = 73.33'$   
 $E = 13.26'$   
 P.C. STA. = 301+88.19  
 P.T. STA. = 302+61.52

EXIST. CURVE C105  
 PI STA. = 300+82.66  
 $\Delta = 26^\circ 31' 48''$  (LT)  
 $D = 31^\circ 49' 52''$   
 $R = 180.00'$   
 $T = 42.43'$   
 $L = 83.35'$   
 $E = 4.93'$   
 P.C. STA. = 300+40.23  
 P.T. STA. = 301+23.57

CONTROL POINT #15  
 STA. 301+40.25, 17.65' RT.  
 $N 137^\circ 88' 17.14''$   
 $E 2118819.12$   
 ELEV. = 698.43

SCARIFY EXISTING SURFACE  
 STA. 300+75 TO STA. 303+25, 1334.6 SQ. YD.



LOCATION	EXCAVATION SPECIAL
	(CU YD)
PARKING LOT STA. 302+17 TO STA. 302+53	580.7

FILE NAME = #FILEL#	USER NAME = #USER#	DESIGNED - R.H.D.	REVISED -	<b>STATE OF ILLINOIS DEPARTMENT OF TRANSPORTATION</b>	<b>ARGYLE LAKE STATE PARK SIDE ROAD</b>	F.A. RTE.	SECTION	COUNTY	TOTAL SHEETS	SHEET NO.
		DRAWN - J.T.T.	REVISED -			ARGYLE LAKE STATE PARK	MCDONOUGH	162	68	
		CHECKED - T.T.P.	REVISED -			CONTRACT NO. 46158				
		DATE - 12/09/10	REVISED -			FED. ROAD DIST. NO. ILLINOIS FED. AID PROJECT				
				SCALE: 1" = 20'	SHEET NO. 68 OF 162 SHEETS	STA. 300+75 TO STA. 303+25				