

EXISTING LEGEND

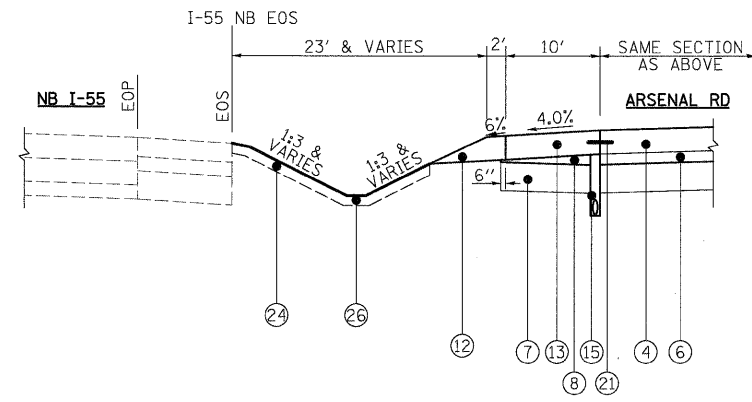
- (A) EXISTING PORTLAND CEMENT CONCRETE PAVEMENT
- (B) EXISTING HMA SUB-BASE
- (C) EXISTING AGGREGATE SUBGRADE
- (D) EXISTING CONCRETE SHOULDER
- (E) EXISTING CURB & GUTTER
- (F) EXISTING PIPE UNDERDRAIN
- (G) EXISTING SUB-BASE GRANULAR MATERIAL
- (H) EXISTING AGGREGATE SHOULDER
- (I) EXISTING BITUMINOUS CONCRETE OVERLAY, 3" AND 10"
- (J) EXISTING HMA OVERLAY, 4"±
- (K) EXISTING HMA PAVEMENT
- (L) EXISTING HMA SHOULDER
- (M) EXISTING BITUMINOUS CONCRETE SHOULDER
- (N) EXISTING GROUND OR BASE COURSE, VARIES
- (O) EXISTING TEMPORARY CONCRETE BARRIER

PROPOSED LEGEND

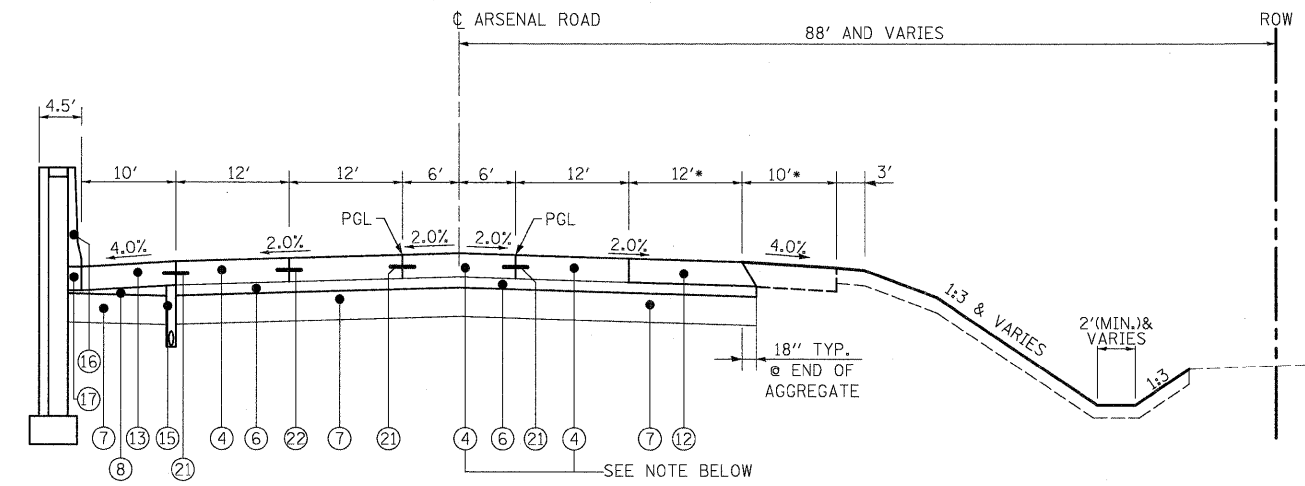
- (1) HOT-MIX ASPHALT SURFACE COURSE. MIX "D", N70, 1.75"
- (2) HOT-MIX ASPHALT BINDER COURSE, IL-19.0, N70, 2.25"
- (3) HOT-MIX ASPHALT SHOULDERS, 10" (IN 3 LIFTS)
- (4) PORTLAND CEMENT CONCRETE PAVEMENT 10" (JOINTED)
- (5) STRIP REFLECTIVE CRACK CONTROL TREATMENT
- (6) STABILIZED SUB-BASE - HOT MIX ASPHALT, 4 1/2"
- (7) AGGREGATE SUBGRADE 12"
- (8) SUB-BASE GRANULAR MATERIAL, TYPE B
- (9) BITUMINOUS MATERIALS (PRIME COAT)
- (10) AGGREGATE (PRIME COAT)
- (11) AGGREGATE SHOULDERS, TYPE B 8"
- (12) AGGREGATE SHOULDERS, TYPE B 10"
- (13) PORTLAND CEMENT CONCRETE SHOULDERS 10"
- (14) PORTLAND CEMENT CONCRETE BASE COURSE 10"
- (15) PIPE UNDERDRAINS 6", 36" NOMINAL DEPTH
- (16) CONCRETE BARRIER, VARIABLE CROSS-SECTION, VARIABLE HEIGHT (SEE PLANS FOR EXACT TYPE)
- (17) CONCRETE BARRIER BASE (SEE PLANS FOR EXACT TYPE)
- (18) COMBINATION CONCRETE CURB AND GUTTER, TYPE B-6.24
- (19) CONCRETE MEDIAN SURFACE, 4" (INCLUDES 4" COARSE AGGREGATE FILL)
- (20) DRILL AND GROUT NO. 8 TIE BARS AT 24" CTS.
- (21) LONGITUDINAL CONSTRUCTION JOINT NO. 8 x 24" TIE BARS AT 24" CTS.
- (22) LONGITUDINAL SAWED JOINT NO. 6 x 36" TIE BARS AT 18" CTS.
- (23) NO. 8 TIE BARS AT 24" CTS.
- (24) TOPSOIL FURNISH AND PLACE, 4"
- (25) PROPOSED EMBANKMENT
- (26) PROPOSED DRAINAGE DITCH

UNSUITABLE EXCAVATION

TOPSOIL SHALL BE PLACED ONLY IN LOCATIONS OF PERMANENT SEEDING. SEE LANDSCAPE PLAN FOR LIMITS/LOCATIONS.

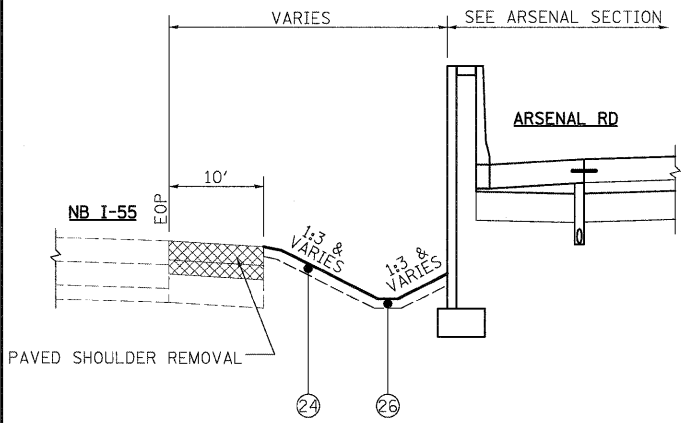


PROPOSED TYPICAL SECTION - ARSENAL ROAD/NB I-55
STA. 949+27 TO STA. 955+62.50

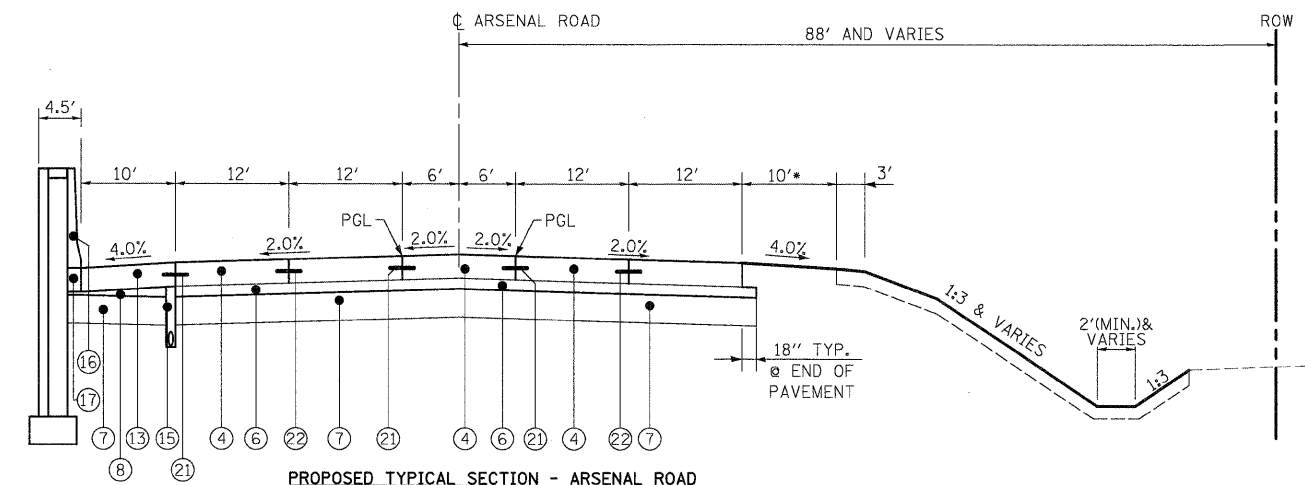


PROPOSED TYPICAL SECTION - ARSENAL ROAD
STA 945+50.00 TO STA. 948+95.00
STA 951+23.47.00 TO STA. 952+75.00
*FUTURE PAVEMENT AND SHOULDER BY OTHERS

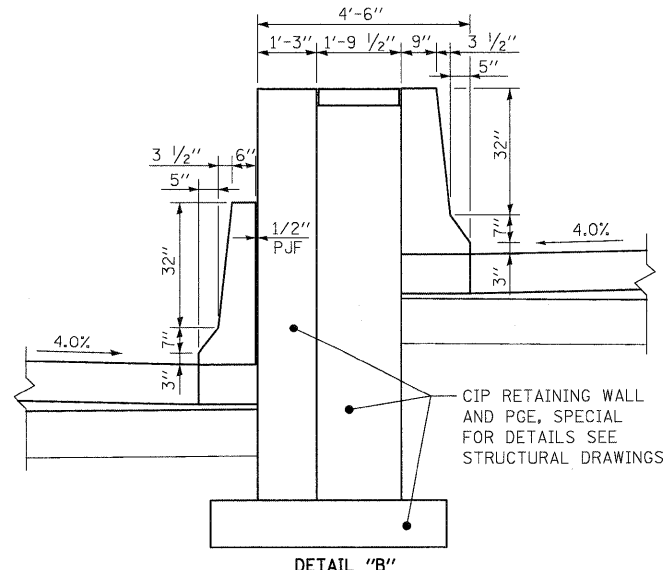
NOTE: STATION 948+95.00 TO STA. 952+05.00 NB PAVEMENT IS HMA
SEE SHEET PR-11



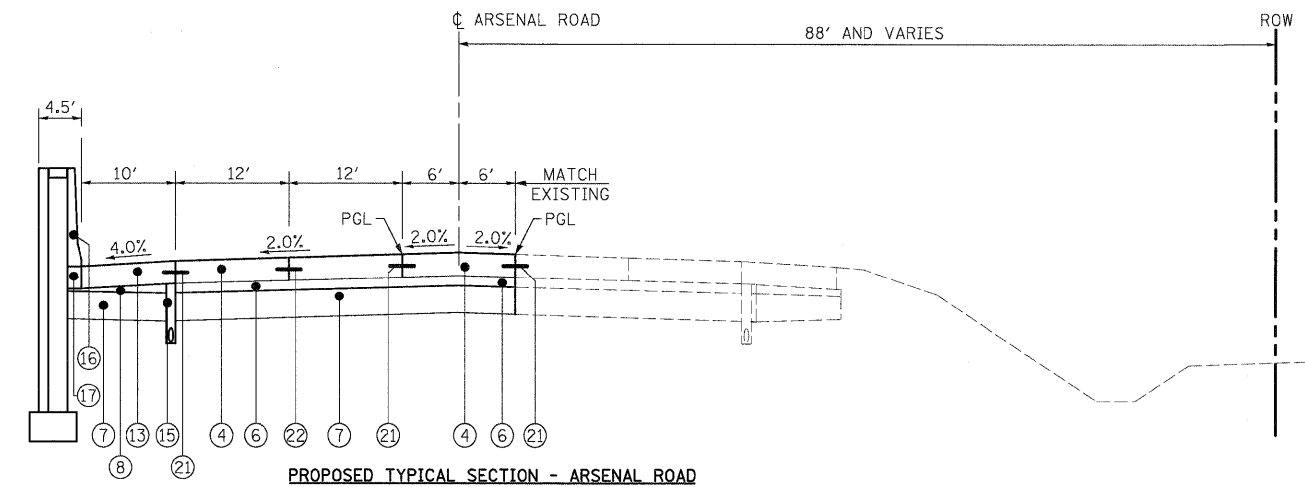
PROPOSED TYPICAL SECTION - ARSENAL ROAD
STA. 934+47.18 TO STA. 949+27



PROPOSED TYPICAL SECTION - ARSENAL ROAD
STA 919+75.00 TO STA. 945+50.00
* FUTURE SHOULDER BY OTHERS



DETAIL "B"



PROPOSED TYPICAL SECTION - ARSENAL ROAD
STA. 903+96.88 TO STA. 905+59.95
STA. 916+71.00 TO STA. 919+75.00

McDonough Associates Inc.
Engineers / Architects
130 East Randolph Street, Chicago, Illinois 60601

FILE NAME = D160F12-SHT-TYPICAL03.dgn	USER NAME = TKLuagel	DESIGNED - MJT	REVISED -	STATE OF ILLINOIS DEPARTMENT OF TRANSPORTATION	TYPICAL SECTIONS	F.A.I. R.T.E. 55	SECTION 99-2HB-2B-1	COUNTY WILL	TOTAL SHEETS 756	SHEET NO. 18
PLOT SCALE = 1:10	CHECKED - DLT	REVISED -	REVISED -			CONTRACT NO. 60F12				
PLOT DATE = 2/3/2011	DATE - 2/4/11	REVISED -	REVISED -			SCALE: SHEET NO. 3 OF 10 SHEETS STA. TO STA.				
						FED. ROAD DIST. NO. 1 ILLINOIS FED. AID PROJECT				