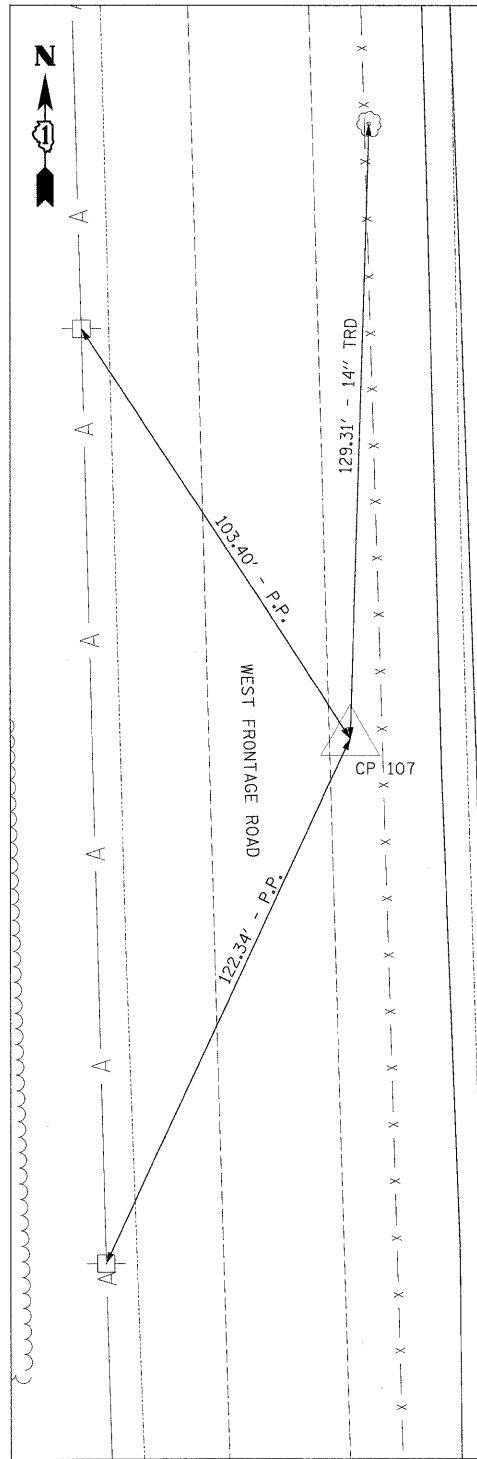
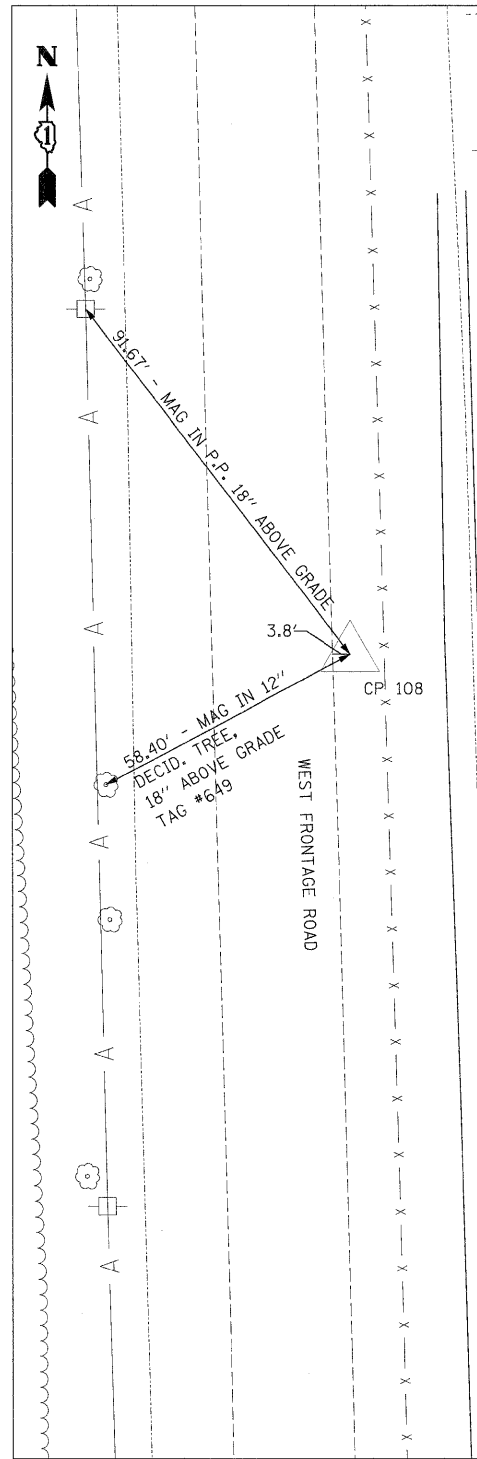


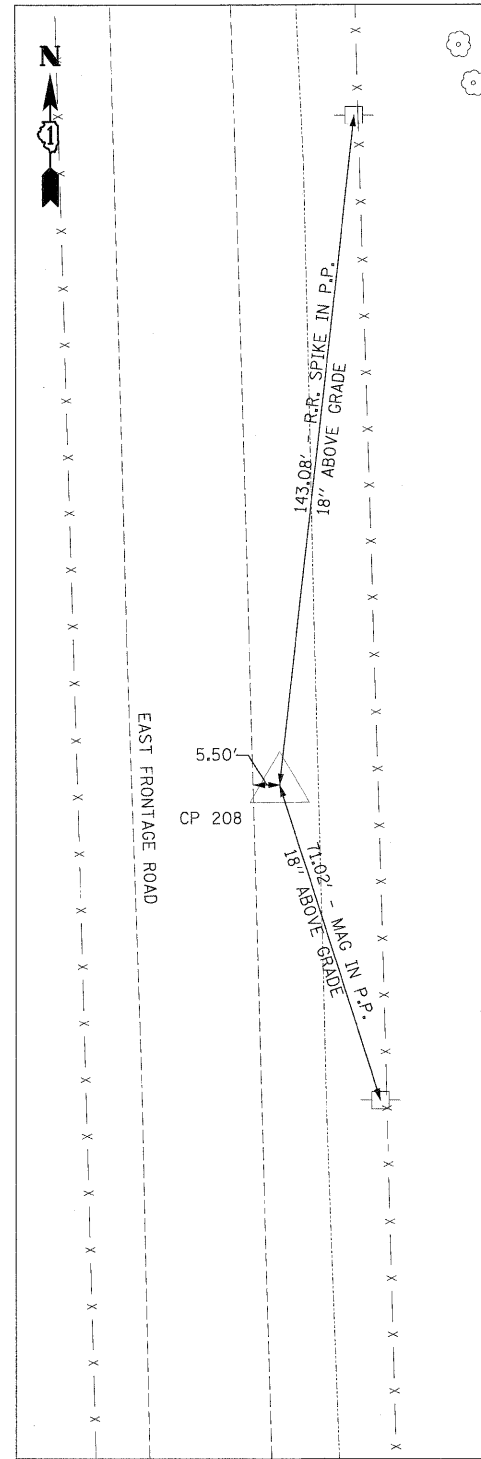
**CP 206**  
 N 1723116.51  
 E 1022851.09  
 STA 1041+01.94  
 OFF 128.62' RT  
 ELEV 533.91



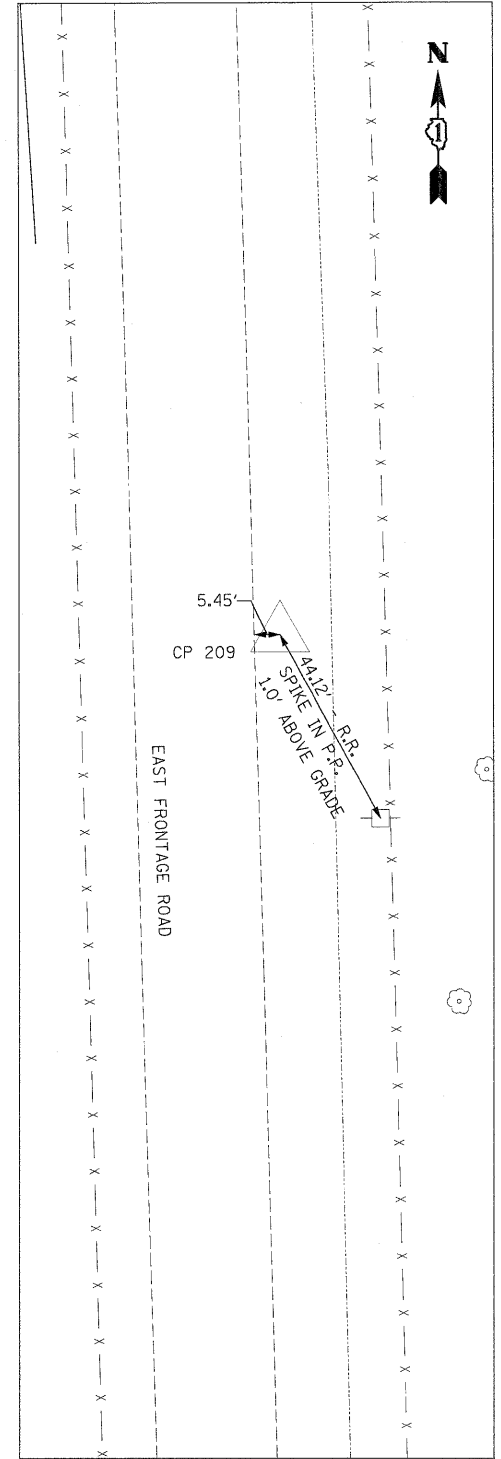
**CP 107**  
 N 1723719.78  
 E 1022834.12  
 STA 1046+97.48  
 OFF 92.77' LT  
 ELEV 535.50



**CP 108**  
 N 1724305.65  
 E 1022596.44  
 STA 1052+97.62  
 OFF 93.26' LT  
 ELEV 535.56



**CP 208**  
 N 1724310.94  
 E 1022818.13  
 STA 1052+96.83  
 OFF 128.49' RT  
 ELEV 535.22



**CP 209**  
 N 1724913.70  
 E 1022801.02  
 STA 1058+99.82  
 OFF 127.95' RT  
 ELEV 535.74