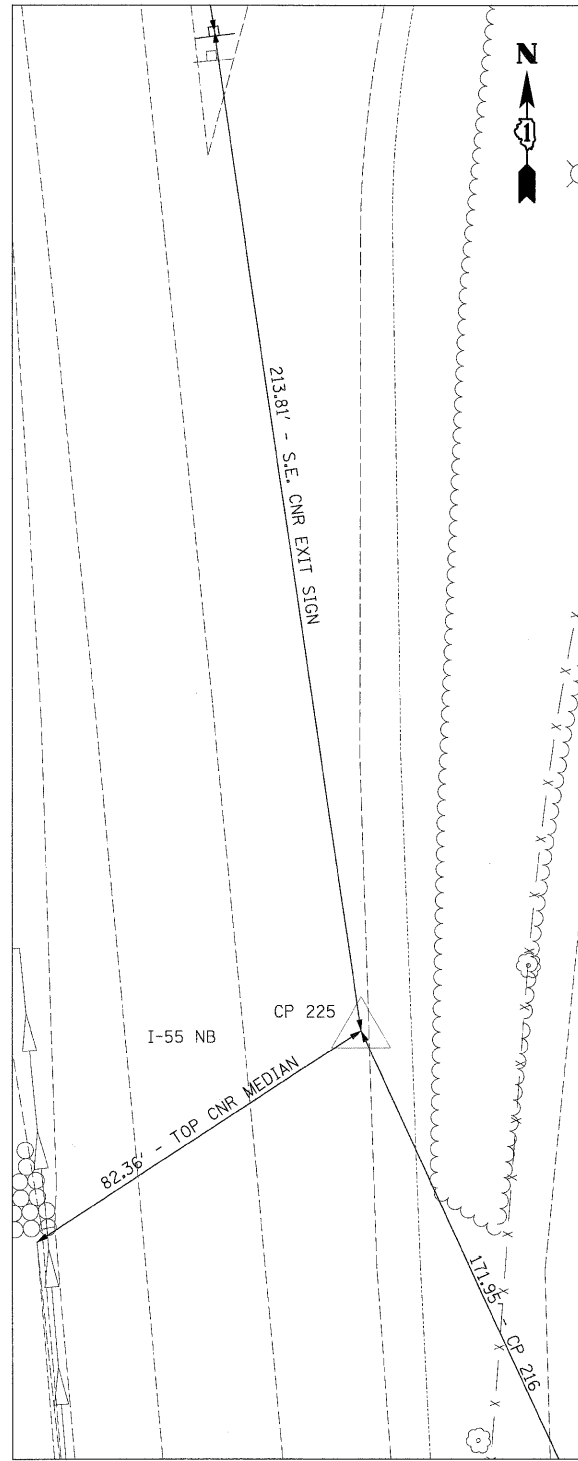


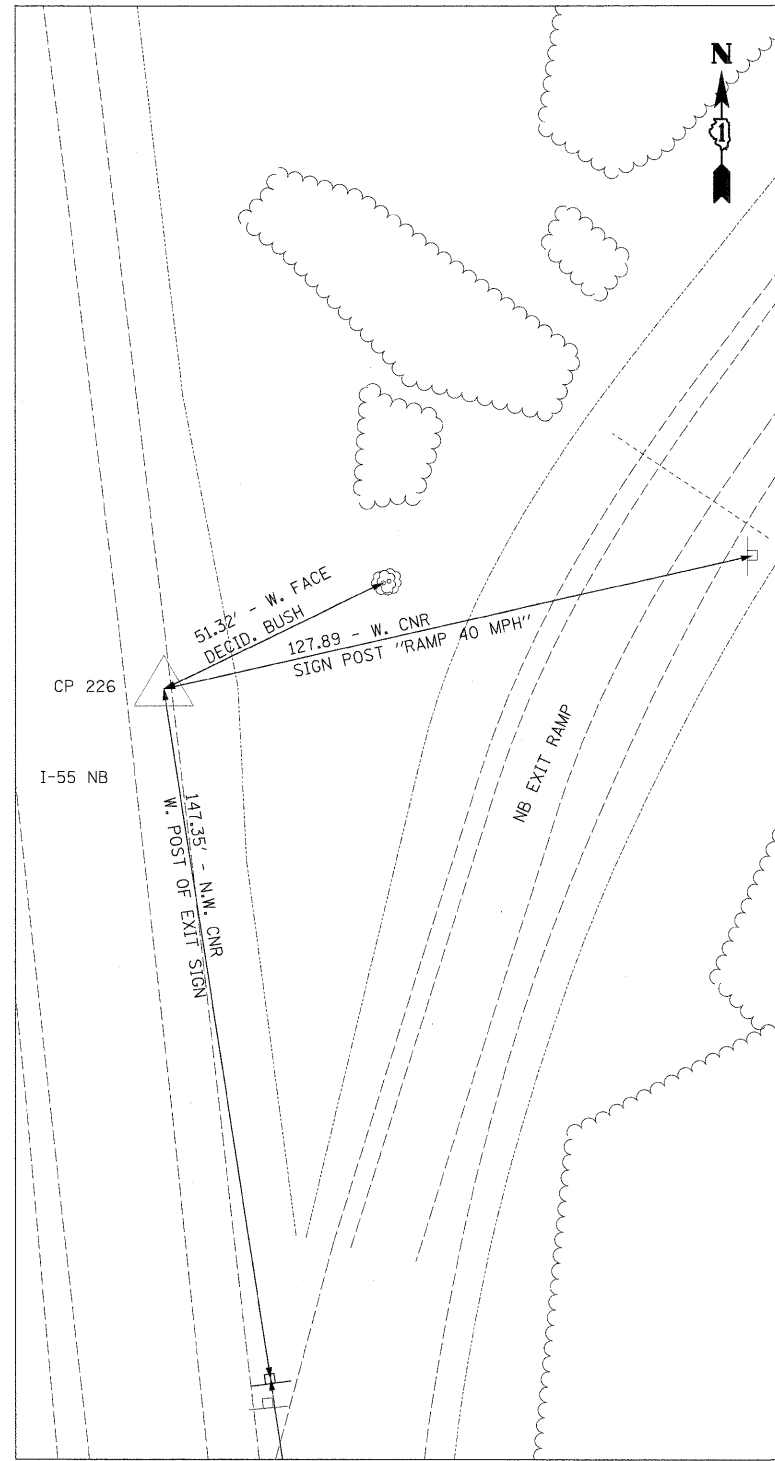
CP 216

N 1729135.49
E 1022659.53
STA 1101+17.33
OFF 127.40' RT
ELEV 550.56



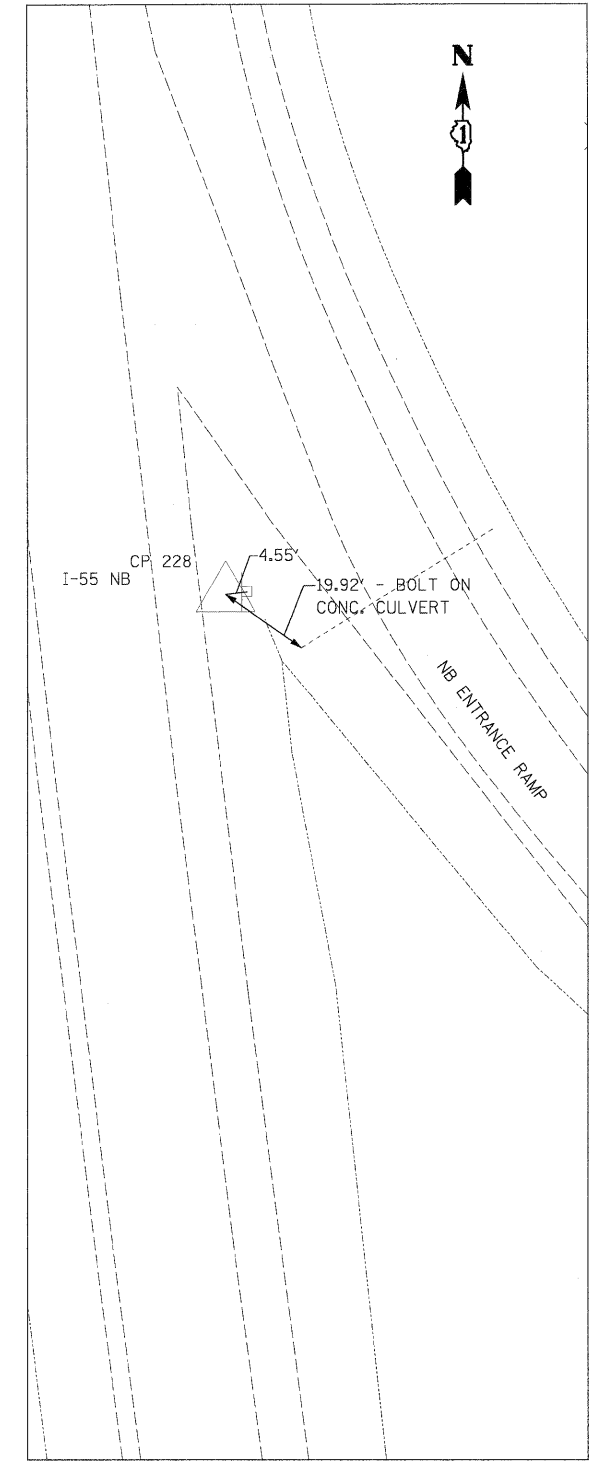
CP 225

N 1729291.64
E 1022587.53
STA 1102+78.21
OFF 69.34' RT
ELEV 549.30



CP 226

N 1729649.45
E 1022533.85
STA 1106+38.31
OFF 53.00' RT
ELEV 548.92



CP 228

N 1730192.79
E 1022473.00
STA 1111+85.14
OFF 59.54' RT
ELEV 545.76

FILE NAME =	USER NAME = TKLuegel
D:\62\F12-SHT-ATB08.dgn	
PLOT SCALE = 1:20	
PLOT DATE = 2/3/2011	

DESIGNED - TRK	REVISED -
DRAWN - TRK	REVISED -
CHECKED - DLT	REVISED -
DATE - 2/4/11	REVISED -

**STATE OF ILLINOIS
DEPARTMENT OF TRANSPORTATION**

ALIGNMENTS, TIES, AND BENCHMARKS

SCALE: 1"=20' SHEET NO. 8 OF 9 SHEETS STA. TO STA.

F.A.I. RTE.	SECTION	COUNTY	TOTAL SHEETS	SHEET NO.
55	99-2HB-2B-1	WILL	756	41
FED. ROAD DIST. NO. 1 ILLINOIS FED. AID PROJECT			CONTRACT NO. 60F12	