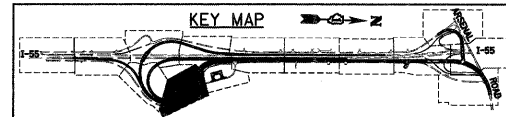
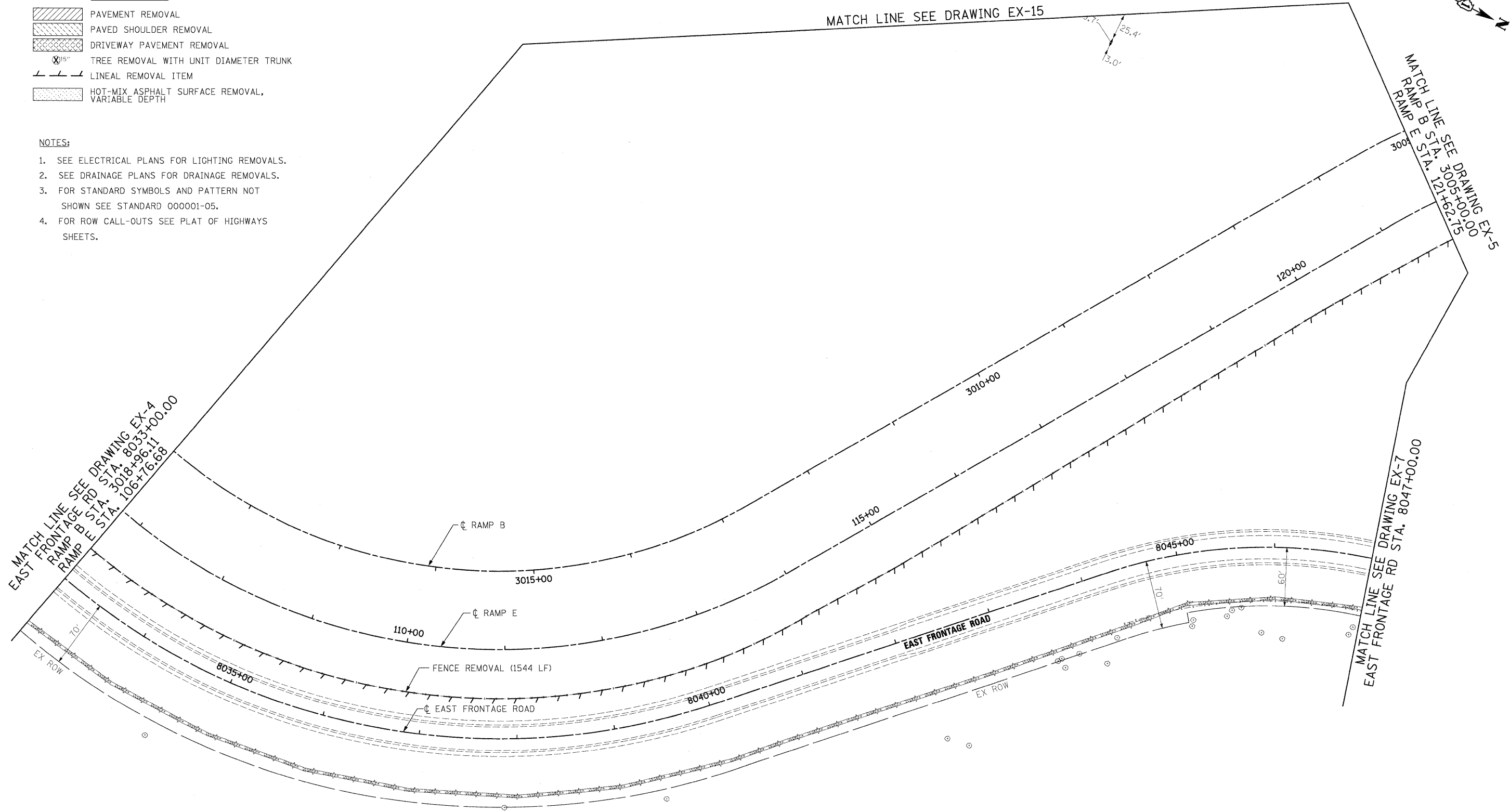


**EXISTING LEGEND**

|  |   |
|--|---|
|  | PAVEMENT REMOVAL                                |
|  | PAVED SHOULDER REMOVAL                          |
|  | DRIVEWAY PAVEMENT REMOVAL                       |
|  | TREE REMOVAL WITH UNIT DIAMETER TRUNK           |
|  | LINEAL REMOVAL ITEM                             |
|  | HOT-MIX ASPHALT SURFACE REMOVAL, VARIABLE DEPTH |

**NOTES:**

1. SEE ELECTRICAL PLANS FOR LIGHTING REMOVALS.
2. SEE DRAINAGE PLANS FOR DRAINAGE REMOVALS.
3. FOR STANDARD SYMBOLS AND PATTERN NOT SHOWN SEE STANDARD 000001-05.
4. FOR ROW CALL-OUTS SEE PLAT OF HIGHWAYS SHEETS.



**McDonough Associates Inc.**  
 Engineers / Architects  
 130 East Randolph Street, Chicago, Illinois 60601

|                       |                      |
|-----------------------|----------------------|
| FILE NAME =           | USER NAME = TKIuegal |
| D160F12-SHT-REM06.dgn |                      |

|                |           |
|----------------|-----------|
| DESIGNED - JTF | REVISED - |
| DRAWN - JTF    | REVISED - |
| CHECKED - DLT  | REVISED - |
| DATE - 2/4/11  | REVISED - |

|                |           |
|----------------|-----------|
| DESIGNED - JTF | REVISED - |
| DRAWN - JTF    | REVISED - |
| CHECKED - DLT  | REVISED - |
| DATE - 2/4/11  | REVISED - |

**STATE OF ILLINOIS**  
**DEPARTMENT OF TRANSPORTATION**

**EXISTING PLAN AND REMOVALS**  
 SCALE: 1"=50'    SHEET NO. 6 OF 15 SHEETS    STA.    TO STA.

| F.A.I. RTE.                                     | SECTION     | COUNTY | TOTAL SHEETS | SHEET NO. |
|---|-------------|--------|--------------|-----------|
| 55  | 99-2HB-2B-1 | WILL   | 756          | 48        |
| CONTRACT NO. 60F12                              |             |        |              |           |
| FED. ROAD DIST. NO. 1 ILLINOIS FED. AID PROJECT |             |        |              |           |