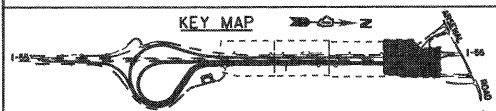


EJM ENGINEERING, INC.
 411 South Wells Street Suite 800
 Chicago, Illinois 60607



FILE NAME =
 ...ND160F12-SHT-STAGING011.dgn

USER NAME = grot
 DESIGNED - GR
 DRAWN - GR
 CHECKED - RY
 DATE - 02/04/2011

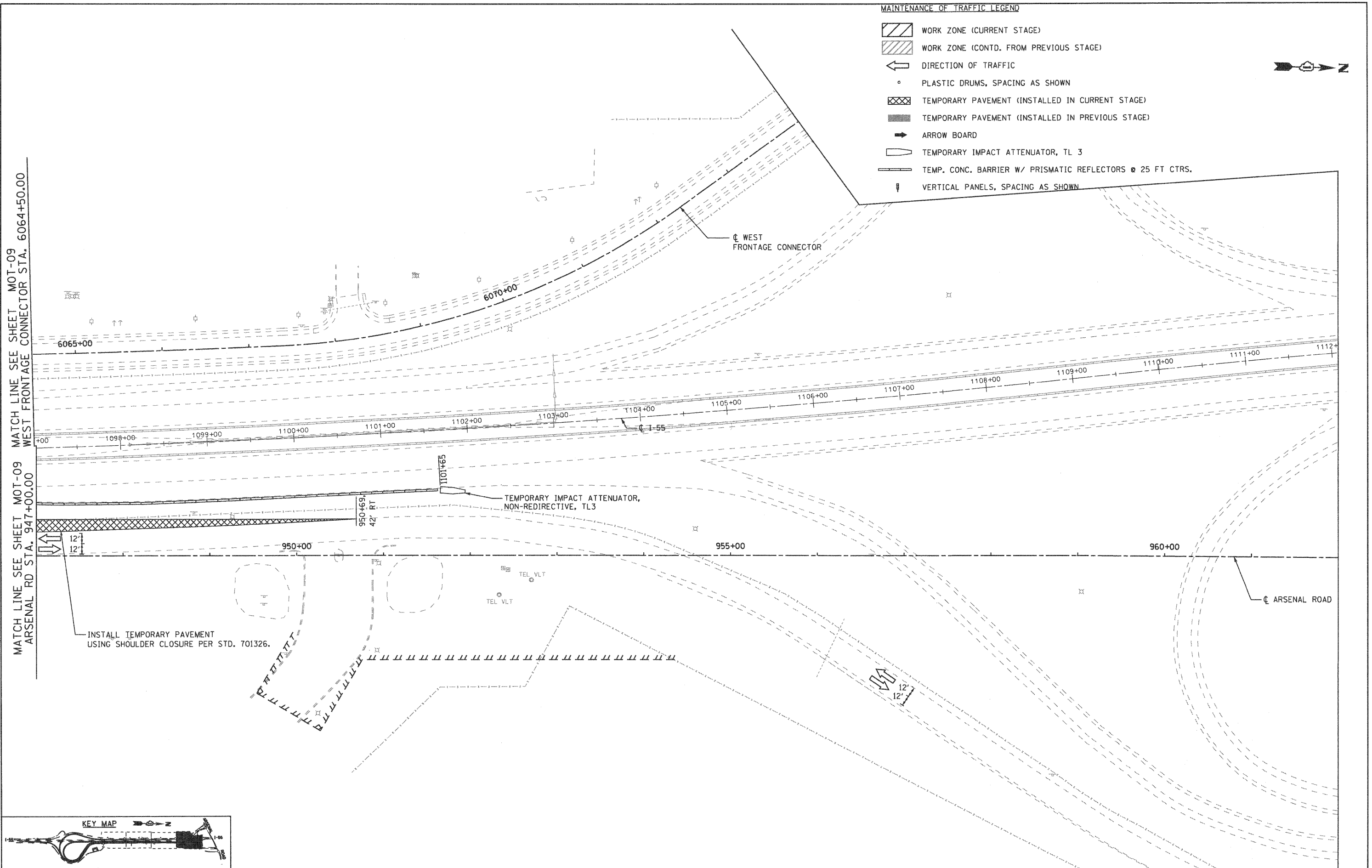
REVIS -
 REVIS -
 REVIS -
 REVIS -

STATE OF ILLINOIS
 DEPARTMENT OF TRANSPORTATION

MAINTENANCE OF TRAFFIC
 PRE-STAGE

SCALE: 1"=50'
 SHEET NO. 4 OF 4 SHEETS
 STA. TO STA.

F.A.I. RTE.	SECTION	COUNTY	TOTAL SHEETS	SHEET NO.
55	99-2HB-2B-1	WILL	756	96
CONTRACT NO. 60F12			ILLINOIS FED. AID PROJECT	



- MAINTENANCE OF TRAFFIC LEGEND**
- WORK ZONE (CURRENT STAGE)
 - WORK ZONE (CONTD. FROM PREVIOUS STAGE)
 - DIRECTION OF TRAFFIC
 - PLASTIC DRUMS, SPACING AS SHOWN
 - TEMPORARY PAVEMENT (INSTALLED IN CURRENT STAGE)
 - TEMPORARY PAVEMENT (INSTALLED IN PREVIOUS STAGE)
 - ARROW BOARD
 - TEMPORARY IMPACT ATTENUATOR, TL 3
 - TEMP. CONC. BARRIER W/ PRISMATIC REFLECTORS @ 25 FT CTRS.
 - VERTICAL PANELS, SPACING AS SHOWN



FINAL