

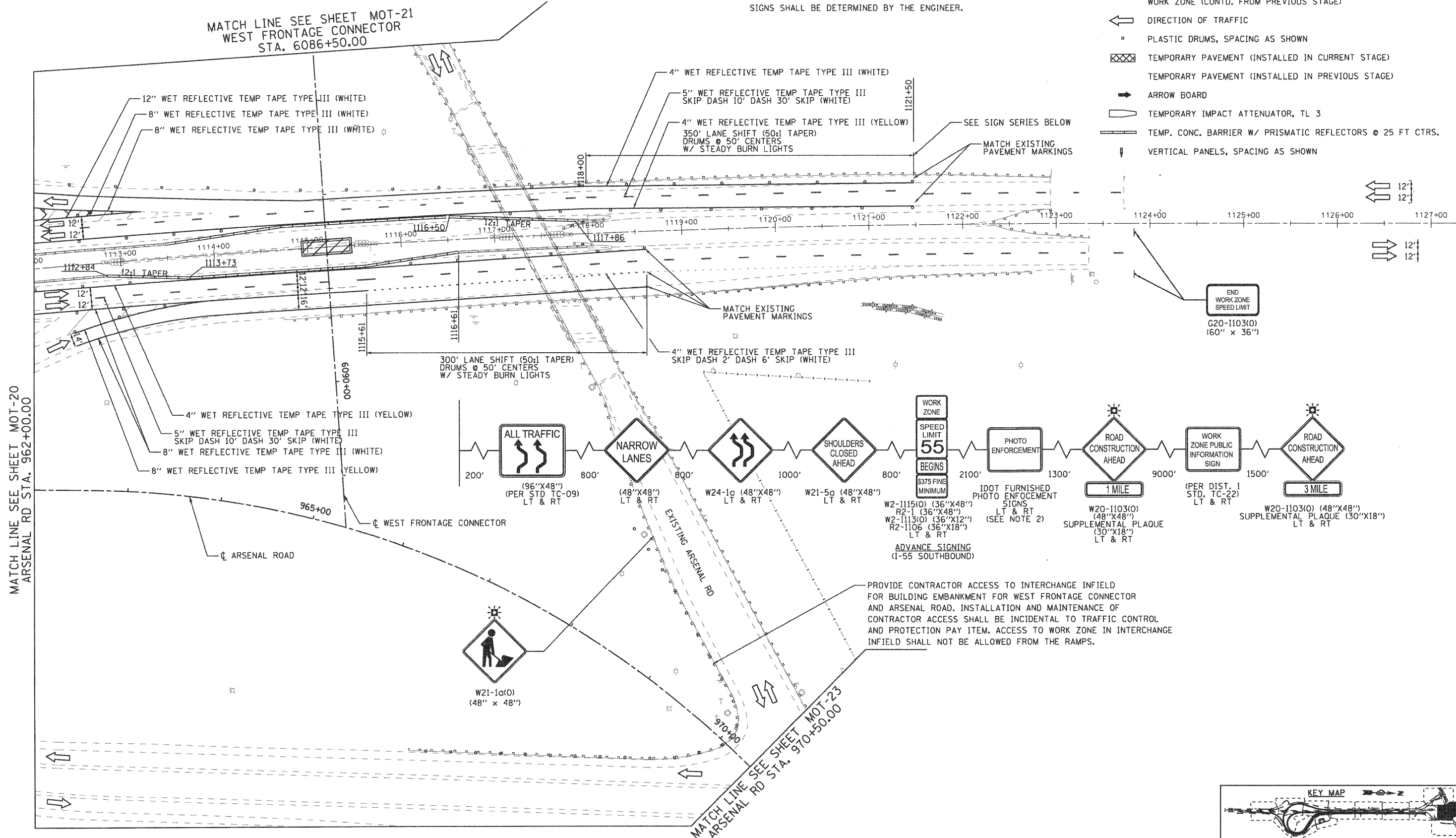


NOTE

- BUILD EMBANKMENT FOR WEST FRONTAGE CONNECTOR FROM STA. 6090+00 TO STA. 6091+50 AND FOR ARSENAL ROAD FROM STA. 961+50 TO STA. 969+00.
- USE OF PHOTO ENFORCEMENT AND ACCOMPANYING SIGNS SHALL BE DETERMINED BY THE ENGINEER.

MAINTENANCE OF TRAFFIC LEGEND

- WORK ZONE (CURRENT STAGE)
- WORK ZONE (CONTD. FROM PREVIOUS STAGE)
- DIRECTION OF TRAFFIC
- PLASTIC DRUMS, SPACING AS SHOWN
- TEMPORARY PAVEMENT (INSTALLED IN CURRENT STAGE)
- TEMPORARY PAVEMENT (INSTALLED IN PREVIOUS STAGE)
- ARROW BOARD
- TEMPORARY IMPACT ATTENUATOR, TL 3
- TEMP. CONC. BARRIER W/ PRISMATIC REFLECTORS @ 25 FT CTRS.
- VERTICAL PANELS, SPACING AS SHOWN



EJM ENGINEERING, INC.
 411 South Wells Street Suite 800
 Chicago, Illinois 60607

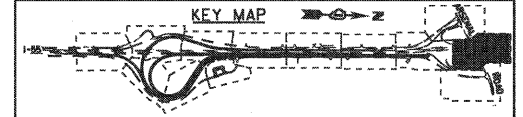
FILE NAME = ...\\D160F12-SHT-STAGING113.dgn
 USER NAME = grol
 PLOT SCALE = 1/8"=1'-0"
 PLOT DATE = 2/2/2011

DESIGNED - GR	REVISED -
DRAWN - GR	REVISED -
CHECKED - RY	REVISED -
DATE - 02/04/2011	REVISED -

**STATE OF ILLINOIS
 DEPARTMENT OF TRANSPORTATION**

**MAINTENANCE OF TRAFFIC
 STAGE 1**

SCALE: 1"=50' SHEET NO. 12 OF 13 SHEETS STA. TO STA.



F.A.I. RTE.	SECTION	COUNTY	TOTAL SHEETS	SHEET NO.
55	99-2HB-2B-1	WILL	756	108
CONTRACT NO. 60F12			FED. ROAD DIST. NO. 1 ILLINOIS FED. AID PROJECT	

FINAL