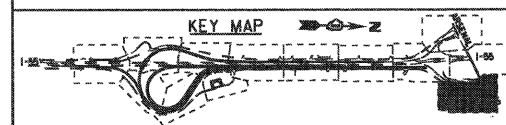


EJM ENGINEERING, INC.
 411 South Wells Street Suite 800
 Chicago, Illinois 60607



MAINTENANCE OF TRAFFIC LEGEND

- WORK ZONE (CURRENT STAGE)
- WORK ZONE (CONTD. FROM PREVIOUS STAGE)
- DIRECTION OF TRAFFIC
- PLASTIC DRUMS, SPACING AS SHOWN
- TEMPORARY PAVEMENT (INSTALLED IN CURRENT STAGE)
- TEMPORARY PAVEMENT (INSTALLED IN PREVIOUS STAGE)
- ARROW BOARD
- TEMPORARY IMPACT ATTENUATOR, TL 3
- TEMP. CONC. BARRIER W/ PRISMATIC REFLECTORS @ 25 FT CTRS.
- VERTICAL PANELS, SPACING AS SHOWN

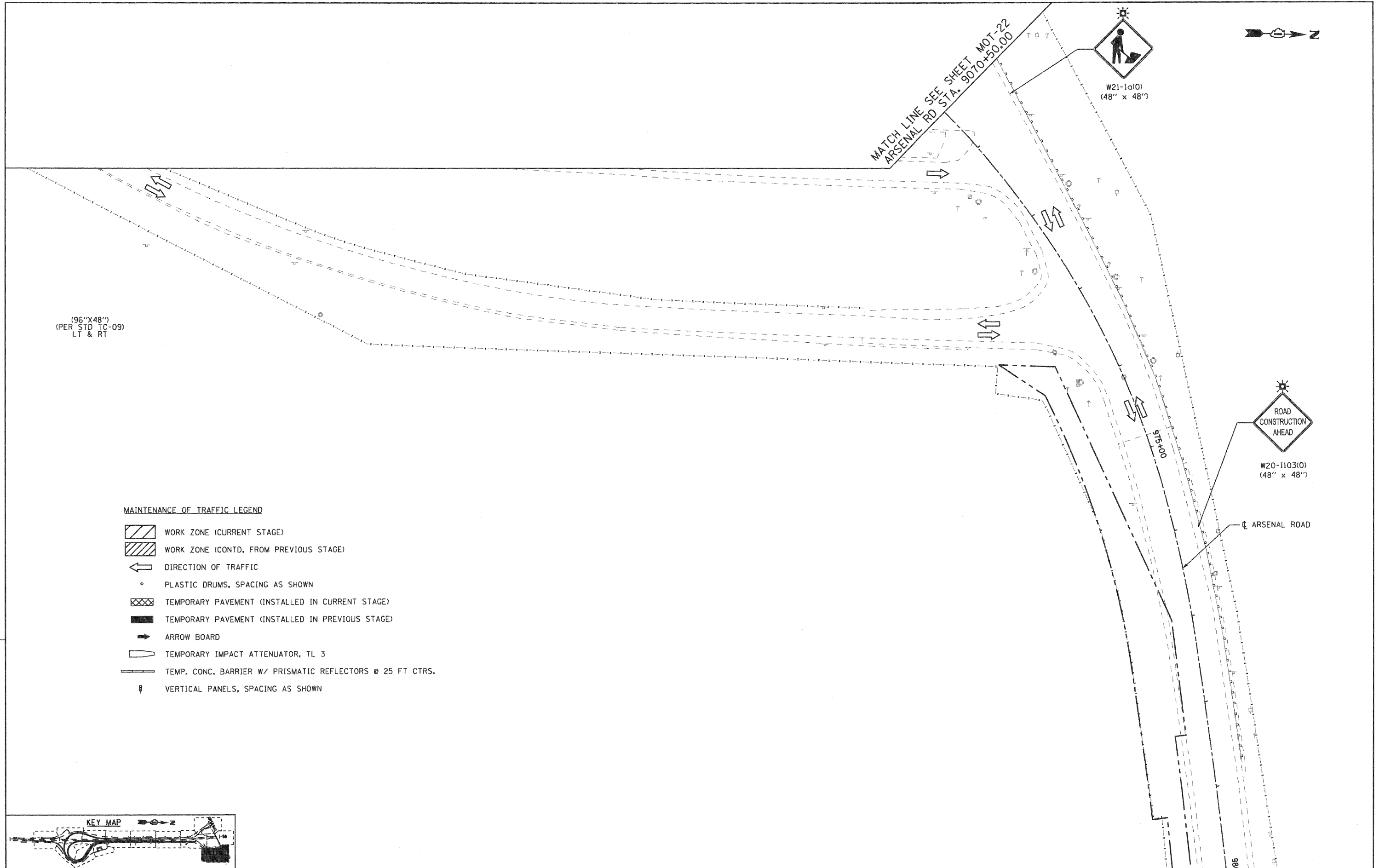
FILE NAME = ...\\0168\F12-SHT-STAGING\14.dgn	USER NAME = grs	DESIGNED - GR	REVISED -
		DRAWN - GR	REVISED -
		CHECKED - RY	REVISED -
		DATE - 02/04/2011	REVISED -

**STATE OF ILLINOIS
 DEPARTMENT OF TRANSPORTATION**

**MAINTENANCE OF TRAFFIC
 STAGE 1**

SCALE: 1"=50' SHEET NO. 13 OF 13 SHEETS STA. TO STA.

F.A.I. RTE. 55	SECTION 99-2HB-2B-1	COUNTY WILL	TOTAL SHEETS 756	SHEET NO. 109
FED. ROAD DIST. NO. 1 ILLINOIS FED. AID PROJECT			CONTRACT NO. 60F12	



(96"X48")
 (PER STD TC-09)
 LT & RT

W21-1a(0)
 (48" x 48")

ROAD
 CONSTRUCTION
 AHEAD
 W20-1103(0)
 (48" x 48")

ARSENAL ROAD

FINAL