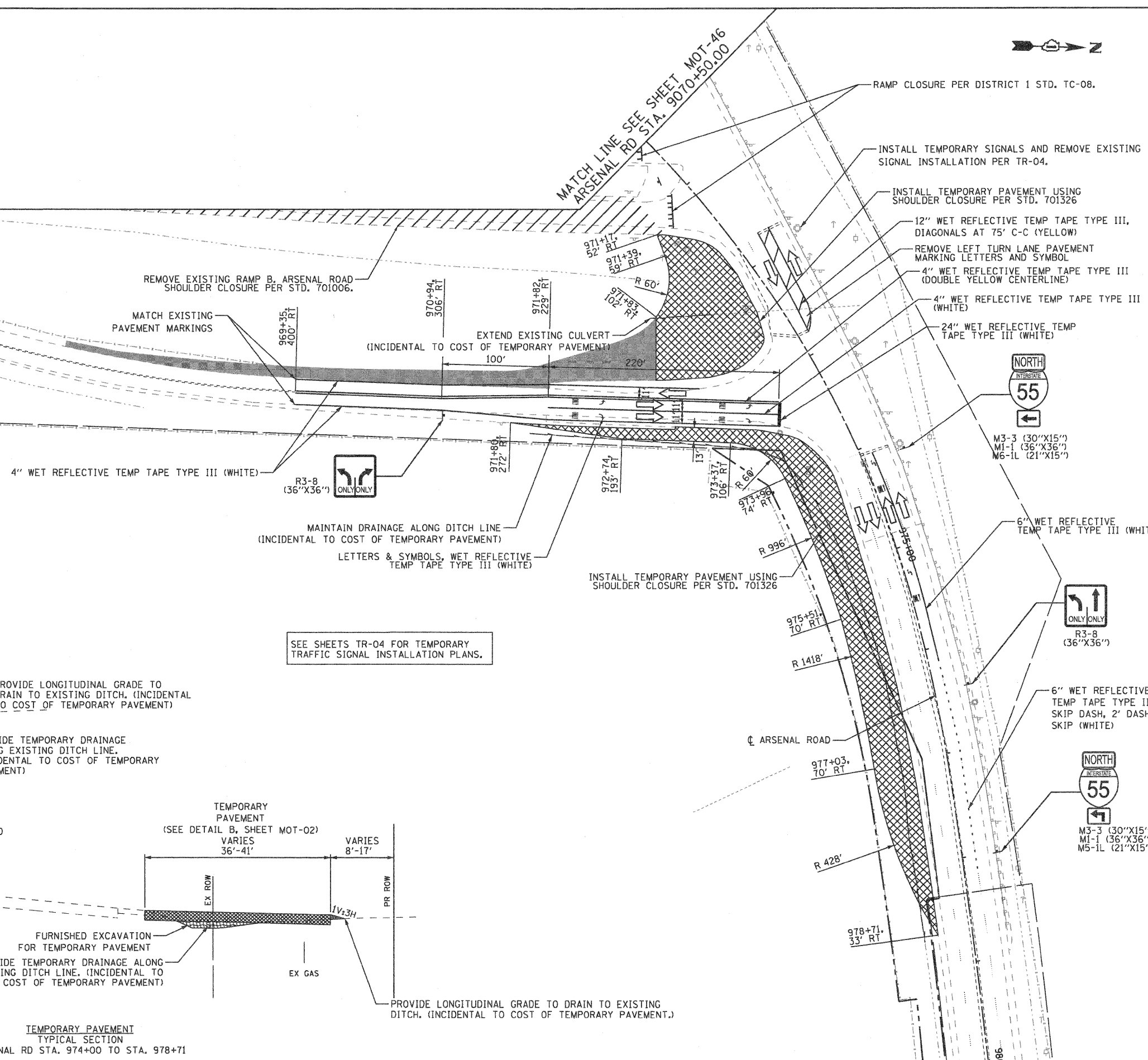
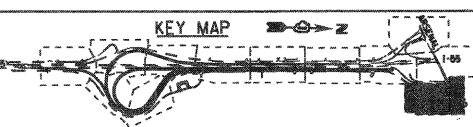
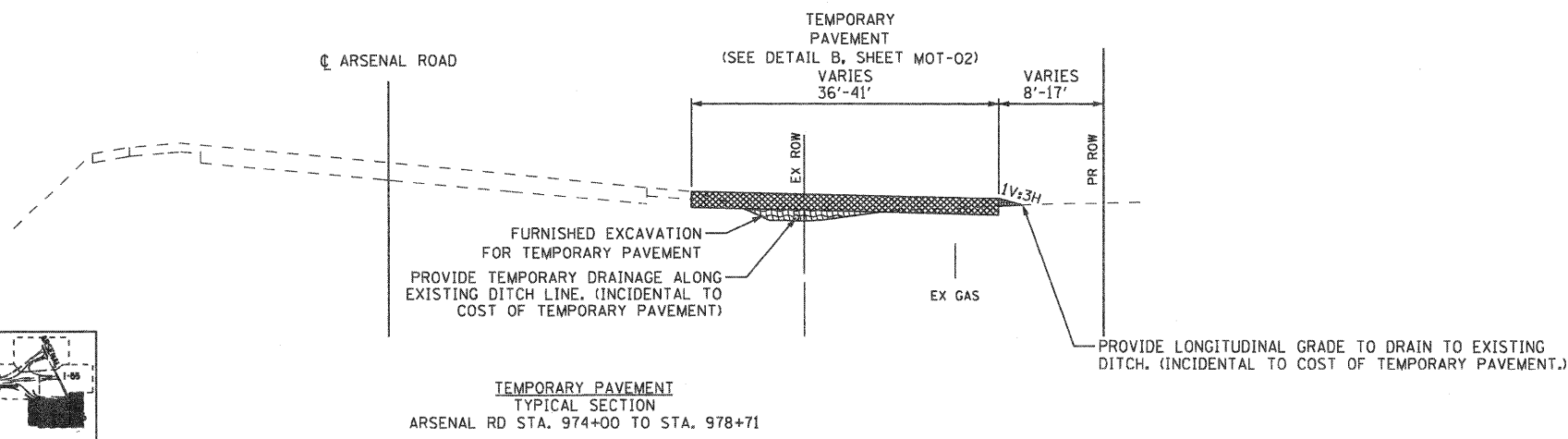
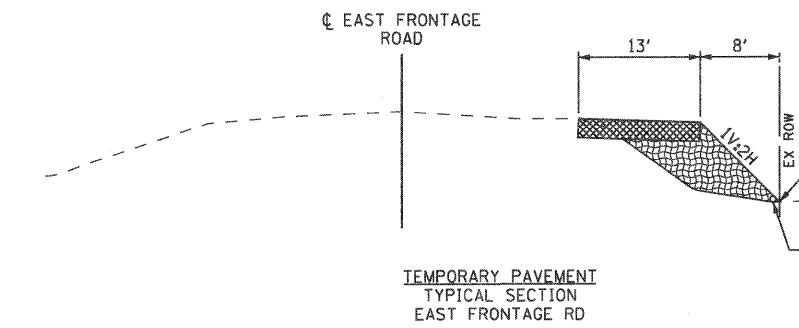




- MAINTENANCE OF TRAFFIC LEGEND**
- WORK ZONE (CURRENT STAGE)
 - WORK ZONE (CONTD. FROM PREVIOUS STAGE)
 - DIRECTION OF TRAFFIC
 - PLASTIC DRUMS, SPACING AS SHOWN
 - TEMPORARY PAVEMENT (INSTALLED IN CURRENT STAGE)
 - TEMPORARY PAVEMENT (INSTALLED IN PREVIOUS STAGE)
 - ARROW BOARD
 - TEMPORARY IMPACT ATTENUATOR, TL 3
 - TEMP. CONC. BARRIER W/ PRISMATIC REFLECTORS @ 25 FT CTRS.
 - VERTICAL PANELS, SPACING AS SHOWN



EJM ENGINEERING, INC.
 411 South Wells Street Suite 800
 Chicago, Illinois 60607



FILE NAME = ...ND168F12-SHT-STAGING314.dgn	USER NAME = gra1	DESIGNED - GR	REVISED -
PLOT SCALE = 1:50	CHECKED - RY	DRAWN - GR	REVISED -
PLOT DATE = 2/4/2011	DATE - 02/04/2011	CHECKED - RY	REVISED -

**STATE OF ILLINOIS
 DEPARTMENT OF TRANSPORTATION**

**MAINTENANCE OF TRAFFIC
 STAGE 3**

SCALE: 1"=50' SHEET NO. 12 OF 12 SHEETS STA. TO STA.

F.A.I. RTE. 55	SECTION 99-2HB-2B-1	COUNTY WILL	TOTAL SHEETS 756	SHEET NO. 133
CONTRACT NO. 60F12			FED. ROAD DIST. NO. 1 (ILLINOIS) FED. AID PROJECT	

FINAL