

EJM ENGINEERING, INC.
 411 South Wells Street Suite 800
 Chicago, Illinois 60607



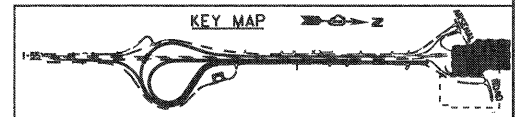
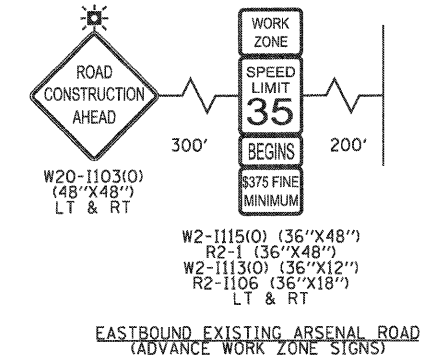
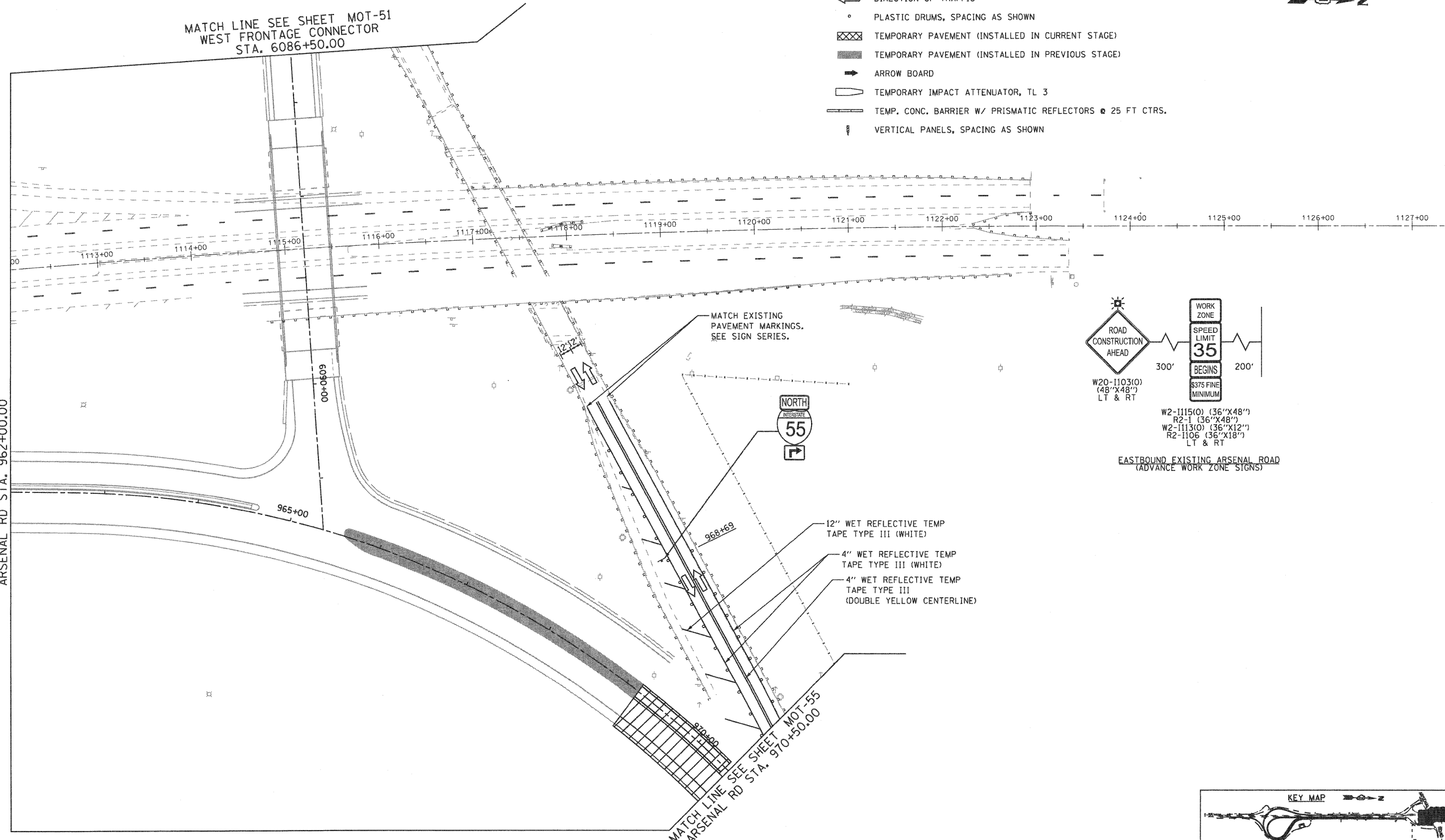
MAINTENANCE OF TRAFFIC LEGEND

- WORK ZONE (CURRENT STAGE)
- WORK ZONE (CONTD. FROM PREVIOUS STAGE)
- DIRECTION OF TRAFFIC
- PLASTIC DRUMS, SPACING AS SHOWN
- TEMPORARY PAVEMENT (INSTALLED IN CURRENT STAGE)
- TEMPORARY PAVEMENT (INSTALLED IN PREVIOUS STAGE)
- ARROW BOARD
- TEMPORARY IMPACT ATTENUATOR, TL 3
- TEMP. CONC. BARRIER W/ PRISMATIC REFLECTORS @ 25 FT CTRS.
- VERTICAL PANELS, SPACING AS SHOWN



MATCH LINE SEE SHEET MOT-51
 WEST FRONTAGE CONNECTOR
 STA. 6086+50.00

MATCH LINE SEE SHEET MOT-50
 ARSENAL RD STA. 962+00.00



FILE NAME = ...\\D160F12-SHT-STAGING4B13.dgn	USER NAME = gres	DESIGNED - GR	REVISED -
		DRAWN - GR	REVISED -
PLOT SCALE = 1:50	CHECKED - RY	REVISED -	REVISED -
PLOT DATE = 2/2/2011	DATE - 02/04/2011	REVISED -	REVISED -

**STATE OF ILLINOIS
 DEPARTMENT OF TRANSPORTATION**

**MAINTENANCE OF TRAFFIC
 STAGE 4B**

SCALE: 1"=50' SHEET NO. 1 OF 2 SHEETS STA. TO STA.

F.A.I. RTE.	SECTION	COUNTY	TOTAL SHEETS	SHEET NO.
55	99-2HB-2B-1	WILL	756	140
CONTRACT NO. 60F12				
FED. ROAD DIST. NO. 1 ILLINOIS FED. AID PROJECT				

FINAL