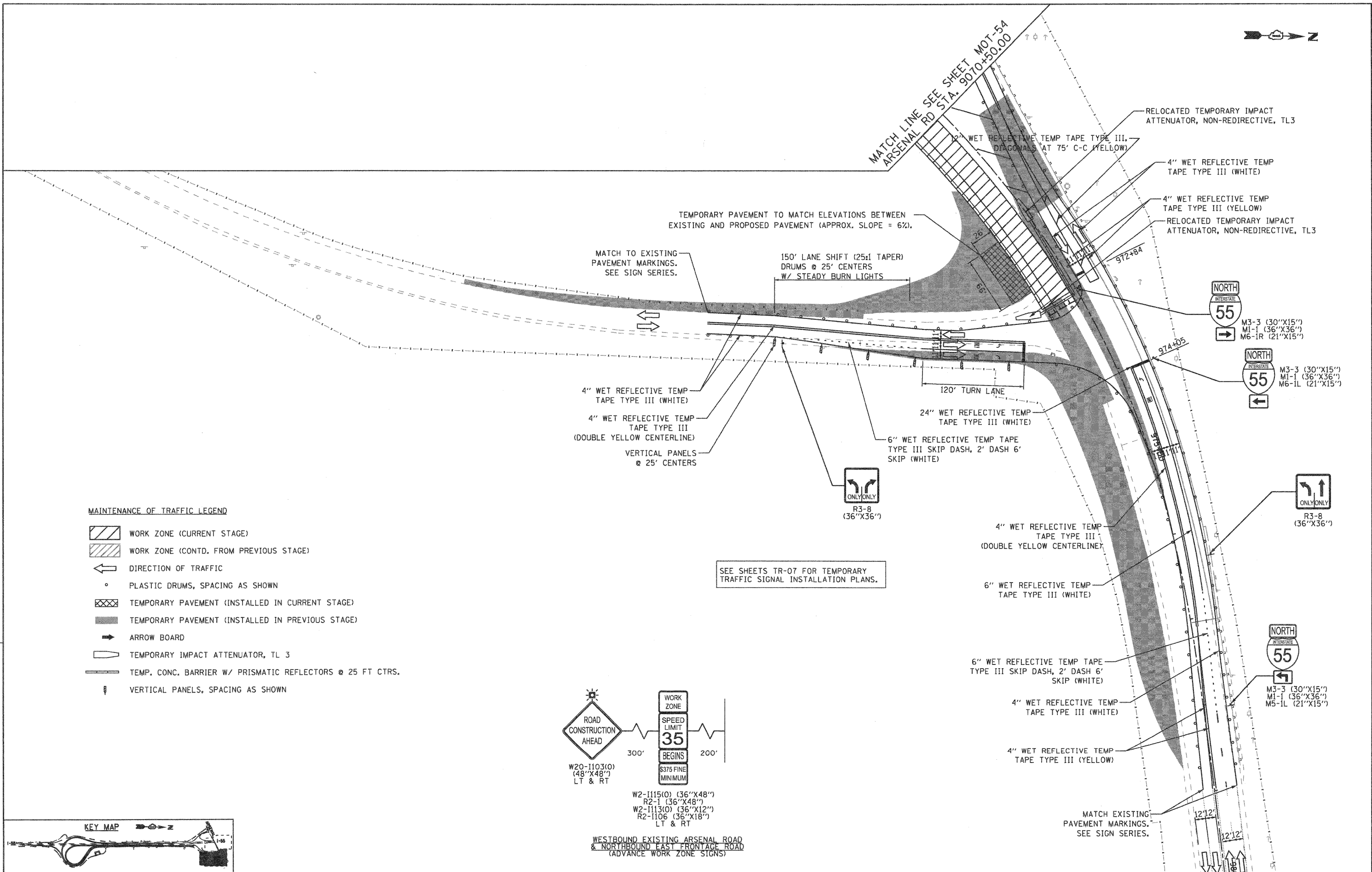


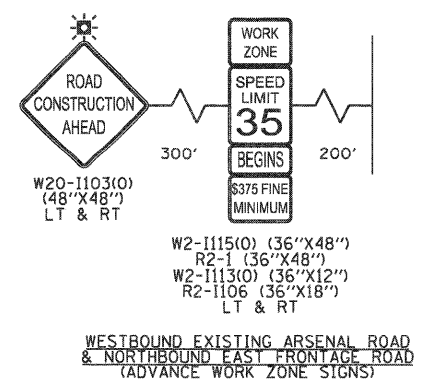
EJM ENGINEERING, INC.
 411 South Wells Street Suite 800
 Chicago, Illinois 60607



MAINTENANCE OF TRAFFIC LEGEND

- WORK ZONE (CURRENT STAGE)
- WORK ZONE (CONTD. FROM PREVIOUS STAGE)
- DIRECTION OF TRAFFIC
- PLASTIC DRUMS, SPACING AS SHOWN
- TEMPORARY PAVEMENT (INSTALLED IN CURRENT STAGE)
- TEMPORARY PAVEMENT (INSTALLED IN PREVIOUS STAGE)
- ARROW BOARD
- TEMPORARY IMPACT ATTENUATOR, TL 3
- TEMP. CONC. BARRIER W/ PRISMATIC REFLECTORS @ 25 FT CTRS.
- VERTICAL PANELS, SPACING AS SHOWN

SEE SHEETS TR-07 FOR TEMPORARY TRAFFIC SIGNAL INSTALLATION PLANS.



FILE NAME = ...N0160F12-SHT-STAGING4814.dgn	USER NAME = gao1	DESIGNED - GR	REVISED -	STATE OF ILLINOIS DEPARTMENT OF TRANSPORTATION	MAINTENANCE OF TRAFFIC STAGE 4B		F.A.I. RTE. 55	SECTION 99-2HB-2B-1	COUNTY WILL	TOTAL SHEETS 756	SHEET NO. 141	
PLOT SCALE = 1/8"=1'	CHECKED - RY	DRAWN - GR	REVISED -		SCALE: 1"=50'	SHEET NO. 2 OF 2 SHEETS	STA. TO STA.	FED. ROAD DIST. NO. 1 (ILLINOIS) FED. AID PROJECT				
PLOT DATE = 2/4/2011	DATE - 02/04/2011	REVISOR -	REVISOR -		CONTRACT NO. 60F12							
FINAL												