

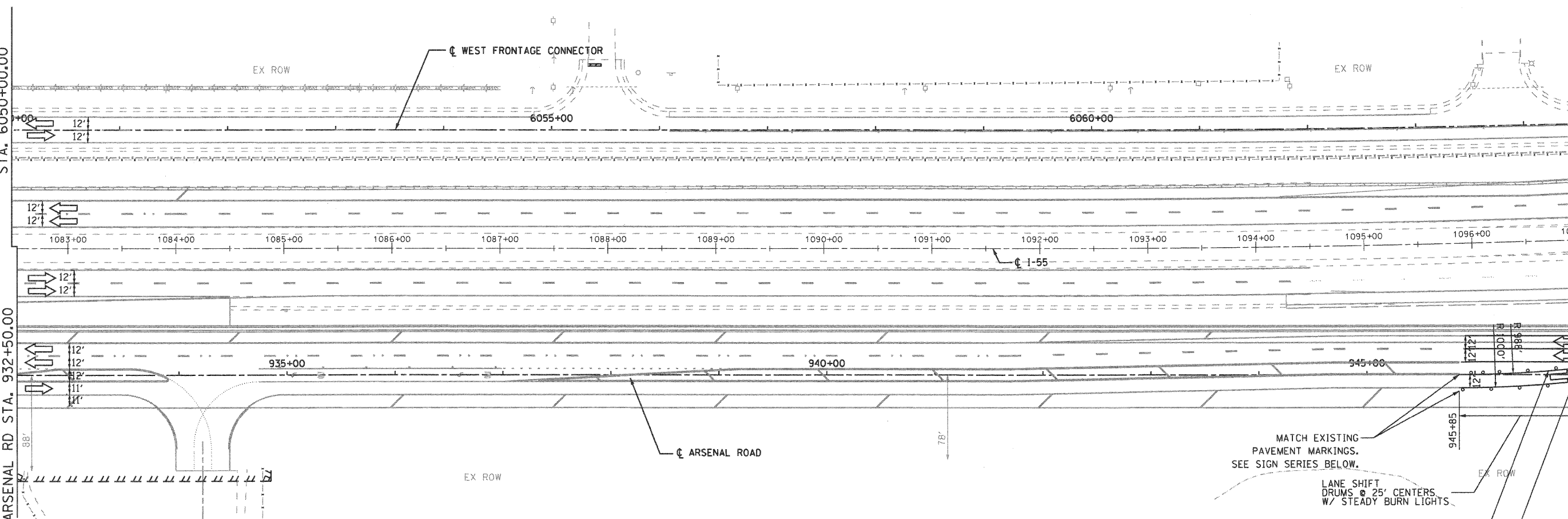


MATCH TO PAVEMENT MARKING PLANS  
WEST FRONTAGE CONNECTOR  
STA. 6050+00.00

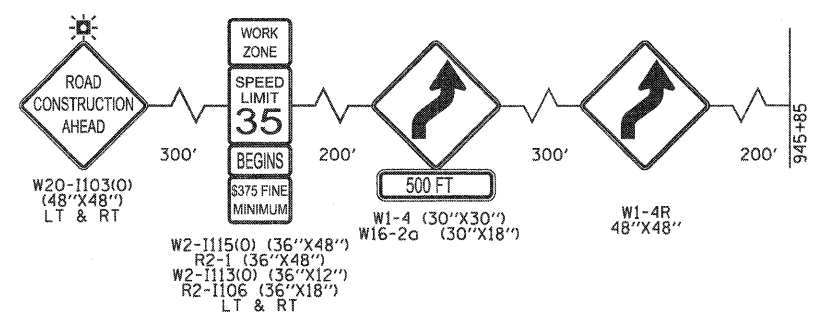
MATCH TO PAVEMENT MARKING PLANS  
ARSENAL RD STA. 932+50.00

MATCH LINE SEE SHEET MOT-59  
WEST FRONTAGE CONNECTOR  
STA. 6064+50.00

MATCH LINE SEE SHEET MOT-59  
ARSENAL RD STA. 947+00.00



- MAINTENANCE OF TRAFFIC LEGEND**
- WORK ZONE (CURRENT STAGE)
  - WORK ZONE (CONTD. FROM PREVIOUS STAGE)
  - DIRECTION OF TRAFFIC
  - PLASTIC DRUMS, SPACING AS SHOWN
  - TEMPORARY PAVEMENT (INSTALLED IN CURRENT STAGE)
  - TEMPORARY PAVEMENT (INSTALLED IN PREVIOUS STAGE)
  - ARROW BOARD
  - TEMPORARY IMPACT ATTENUATOR, TL 3
  - TEMP. CONC. BARRIER W/ PRISMATIC REFLECTORS @ 25 FT CTRS.
  - VERTICAL PANELS, SPACING AS SHOWN



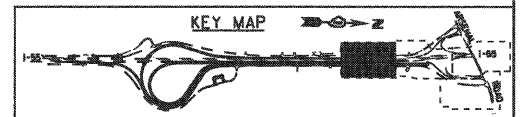
NORTHBOUND ARSENAL ROAD  
(ADVANCE WORK ZONE & LANE SHIFT SIGNS)

MATCH EXISTING PAVEMENT MARKINGS. SEE SIGN SERIES BELOW.

LANE SHIFT DRUMS @ 25' CENTERS W/ STEADY BURN LIGHTS.

4" WET REFLECTIVE TEMP TAPE TYPE III (YELLOW)

4" WET REFLECTIVE TEMP TAPE TYPE III (WHITE)



**EJM ENGINEERING, INC.**  
411 South Wells Street Suite 800  
Chicago, Illinois 60607



FILE NAME = ...N168F12-SHT-STAGING4D10.dgn	USER NAME = g-a-1	DESIGNED - GR	REVISED -
		DRAWN - GR	REVISED -
		CHECKED - RY	REVISED -
		DATE - 02/04/2011	REVISED -

**STATE OF ILLINOIS  
DEPARTMENT OF TRANSPORTATION**

**MAINTENANCE OF TRAFFIC  
STAGE 4D**

SCALE: 1"=50'    SHEET NO. 1 OF 4 SHEETS    STA.    TO STA.

F.A.I. RTE. 55	SECTION 99-2HB-2B-1	COUNTY WILL	TOTAL SHEETS 756	SHEET NO. 144
CONTRACT NO. 60F12				
FED. ROAD DIST. NO. 1 ILLINOIS FED. AID PROJECT				

**FINAL**