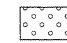
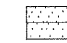
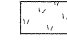
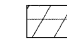
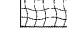
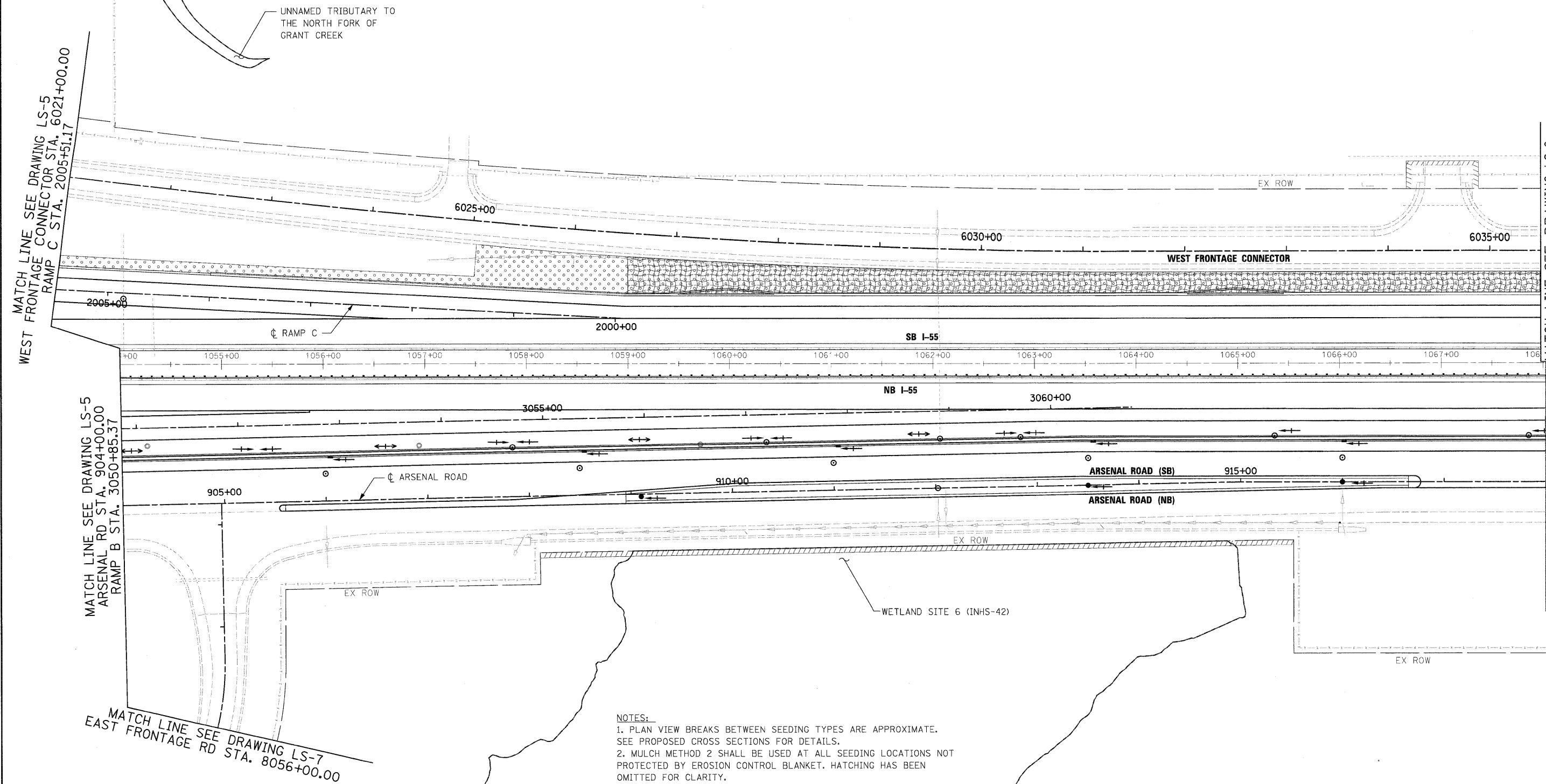
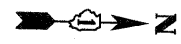
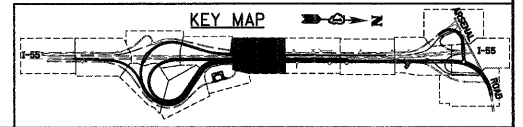


LANDSCAPING LEGEND

- | | | | |
|---|---------------------------------------|---|---|
|  | SEEDING CLASS 2A
TOPSOIL F & P, 4" |  | SEEDING CLASS 4
COMPOST F & P, 2"
TOPSOIL F & P, 4" |
|  | SEEDING CLASS 7 |  | SEEDING CLASS 4B (MODIFIED)
COMPOST F & P, 2"
TOPSOIL F & P, 4" |
|  | EROSION CONTROL BLANKET | | |



- NOTES:**
1. PLAN VIEW BREAKS BETWEEN SEEDING TYPES ARE APPROXIMATE. SEE PROPOSED CROSS SECTIONS FOR DETAILS.
 2. MULCH METHOD 2 SHALL BE USED AT ALL SEEDING LOCATIONS NOT PROTECTED BY EROSION CONTROL BLANKET. HATCHING HAS BEEN OMITTED FOR CLARITY.
 3. TOPSOIL AND SEEDING WILL NOT BE REQUIRED WHERE BEDROCK WILL BE EXPOSED IN THE FINAL CONDITION. SEE CROSS SECTIONS FOR DETAILS.
 4. SEE SHEET EN-2 FOR LANDSCAPING TYPICAL SECTIONS.



FILE NAME = D16\F12-SH-LANDSCP28.dgn	USER NAME = TKLuegel	DESIGNED - MJT	REVISED -	STATE OF ILLINOIS DEPARTMENT OF TRANSPORTATION	LANDSCAPE PLAN	F.A.I. RTE. 55	SECTION 99-2HB-2B-1	COUNTY WILL	TOTAL SHEETS 756	SHEET NO. 289		
PLOT SCALE = 1:50	CHECKED - DLT	REVISED -	SCALE: 1"=50'			SHEET NO. 8 OF 15 SHEETS	STA. TO STA.	CONTRACT NO. 60F12				
PLOT DATE = 2/3/2011	DATE - 2/4/11	REVISED -	FED. ROAD DIST. NO. 1 ILLINOIS FED. AID PROJECT									