

F.A.I. RTE.	SECTION	COUNTY	TOTAL SHEETS	SHEET NO.
55	99-2HB-2B-1	WILL	756	332
FED. ROAD DIST. NO. 1	ILLINOIS	CONTRACT NO.	60F12	

FOR INDEX OF SHEETS, SEE SHEET NO. 2 (VOLUME I)
 FOR INDEX OF SHEETS, SEE SHEET NO. 333 (VOLUME II)
 FOR INDEX OF SHEETS, SEE SHEET NO. 565 (VOLUME III)

STATE OF ILLINOIS
 DEPARTMENT OF TRANSPORTATION
 DIVISION OF HIGHWAYS

**PROPOSED
 HIGHWAY PLANS**

**ROUTE FAI 55 (I-55)
 SECTION 99-2HB-2B-1
 PROJECT
 I-55 AT ARSENAL ROAD
 INTERCHANGE RECONSTRUCTION
 WILL COUNTY
 C-91-033-09**

STATION EQUATIONS:

STA 5025+24.74 BK C WEST FRONTAGE ROAD =
 STA 4000+00.00, 12.00' LT AH B RAMP D =
 STA 6000+00.00 AH C WEST FRONTAGE CONNECTOR

 STA 2038+02.19 BK C RAMP C (PT) =
 STA 100+00.00 AH C RAMD E (PC) =
 STA 7021+82.16, 36.00' RT BK B RAMP A

 STA 126+08.25, 21.00' LT BK END C RAMP E =
 STA 3000+00.00, 21.00' LT AH C RAMP B =
 STA 900+00.00 AH C ARSENAL ROAD =
 STA 1050+03.08, 146.78' RT C I-55

 STA 3059+93.02 C RAMP B =
 STA 1063+08.95, OFF 44.65' RT C I-55

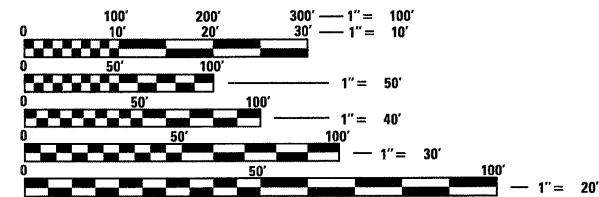
 STA 1999+91.99 C RAMP C =
 STA 1058+95.57, OFF 44.11' LT C I-55

VOLUME II

DESIGN DESIGNATION

I-55 RAMP A	5700(10) INTERSTATE - CLASS I TRUCK ROUTE 11.34 (JPCP-20)
I-55 RAMP B	18500(10) INTERSTATE - CLASS I TRUCK ROUTE 18.20 (JPCP-20)
I-55 RAMP C	18500(10) INTERSTATE - CLASS I TRUCK ROUTE 18.20 (JPCP-20)
I-55 RAMP D	5400(10) INTERSTATE - CLASS I TRUCK ROUTE 11.34 (JPCP-20)
I-55 RAMP E	24200(10) INTERSTATE - CLASS I TRUCK ROUTE 18.20 (JPCP-20)
ARSENAL ROAD	35900(10) SUBURBAN STRATEGIC REGIONAL ARTERIAL (SRA) - CLASS I TRUCK ROUTE 22.47 (JPCP-20)
EAST FRONTAGE ROAD	3400(10) COLLECTOR STREET 3.20 (BIT-20)
WEST FRONTAGE CONNECTOR	4900(10) COLLECTOR STREET 4.63 (JPCP-20)
WEST FRONTAGE ROAD	4900(10) COLLECTOR STREET 3.20 (BIT-20)

DESIGN SPEED: I-55 = 70 MPH
 ARSENAL ROAD = 50 MPH
 EAST FRONTAGE ROAD = 50 MPH
 WEST FRONTAGE CONNECTOR = 50 MPH
 WEST FRONTAGE ROAD = 50 MPH
 RAMP'S A, C, D & E = 50 MPH
 RAMP B = 40 MPH



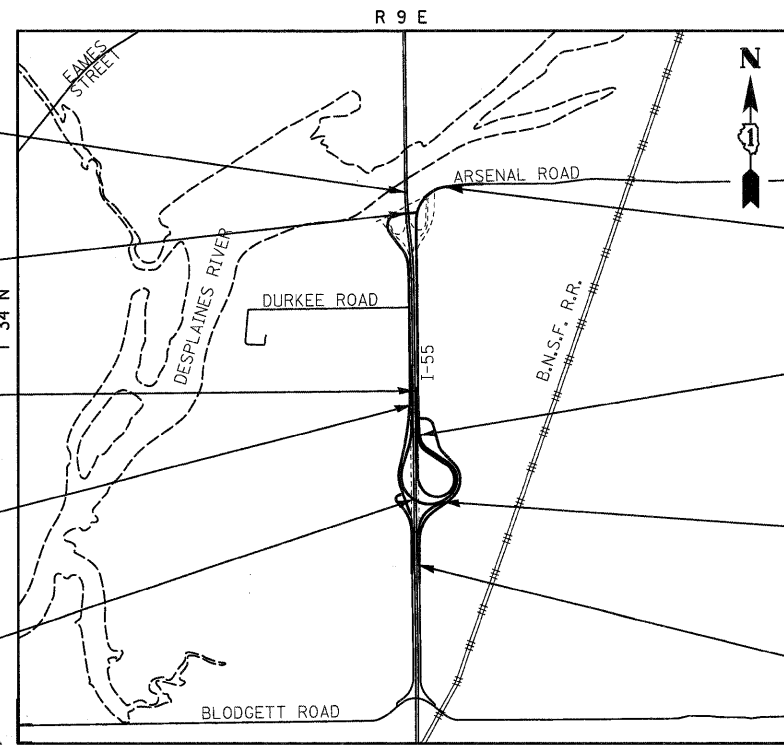
FULL SIZE PLANS HAVE BEEN PREPARED USING STANDARD ENGINEERING SCALES. REDUCED SIZED PLANS WILL NOT CONFORM TO STANDARD SCALES. IN MAKING MEASUREMENTS ON REDUCED PLANS, THE ABOVE SCALES MAY BE USED.

J.U.L.I.E.
 JOINT UTILITY LOCATION INFORMATION FOR EXCAVATION
 1-800-892-0123
 OR 811



SIGNATURE: *Alan R. Swanson*
 DATE: 01/27/2011
 NAME: ALAN R. SWANSON
 EXP. 11/30/2011
 SHEETS: 1-86, 148-166, 204-219, 253-317, 332-333, 564-565, 585-756

SIGNATURE: *Gerald E. Koynass*
 DATE: 1/27/2011
 NAME: GERALD E. KOYLASS
 EXP. 11/30/2011
 SHEETS: 318-331, 437-441, 465-563



END SB I-55 IMPROVEMENT
 STA 1121+26.00 C I-55

WEST FRONTAGE CONNECTOR
 OVER I-55
 STRUCTURE NO 099-0347
 STA 6087+47.32 TO STA 6089+64.32

END IMPROVEMENT
 STA 3059+93.02 C RAMP B

BEGIN IMPROVEMENT
 STA 1058+95.57 C I-55
 STA 1999+91.99 C RAMP C

RAMP C OVER I-55
 STRUCTURE NO 099-0348
 STA 2028+61.89 TO STA 2030+80.01

END IMPROVEMENT
 STA 977+04.16 C ARSENAL ROAD

BEGIN IMPROVEMENT
 STA 900+00.00 C ARSENAL ROAD
 STA 3000+00.00 C RAMP B
 END IMPROVEMENT
 STA 126+08.25 C RAMP E

END IMPROVEMENT
 STA 7021+82.16 C RAMP A
 STA 2038+02.19 C RAMP C
 BEGIN IMPROVEMENT
 STA 100+00.00 C RAMP E

BEGIN IMPROVEMENT
 STA 7000+25.39 C RAMP A

LOCATION MAP
 SCALE= 1:2400

LENGTH OF PROJECT

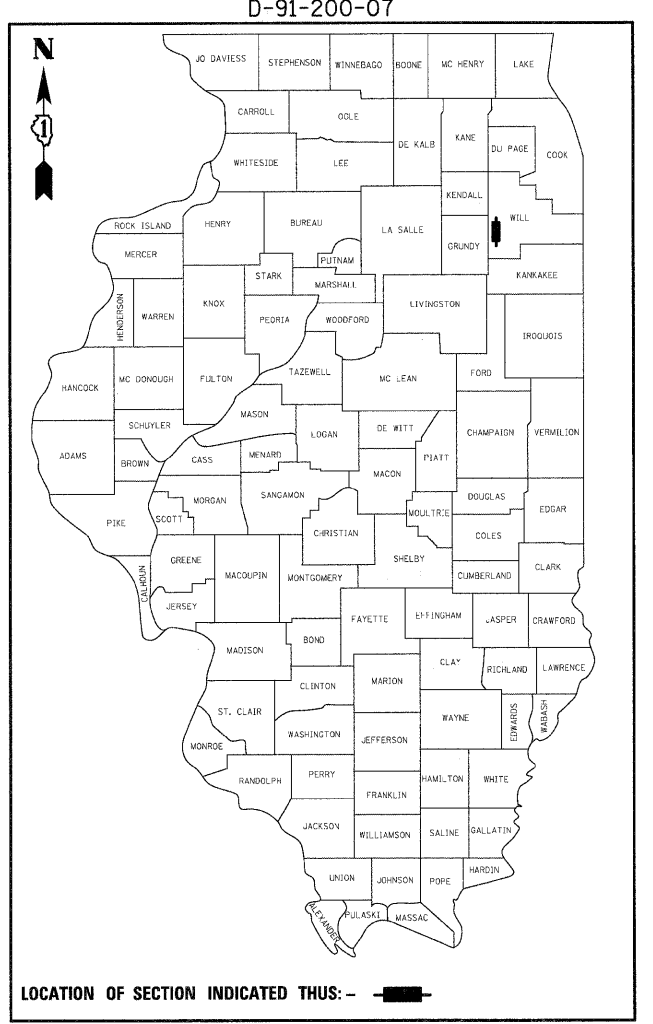
I-55 SHOULDER RECONSTRUCTION	= 6,465.56 FT = 1.225 MI
RAMP A	= 2,156.77 FT = 0.408 MI
RAMP B/I-55	= 8,134.07 FT = 1.541 MI
RAMP C/I-55	= 7,314.63 FT = 1.385 MI
RAMP E	= 2,608.25 FT = 0.494 MI
ARSENAL ROAD	= 5,565.25 FT = 1.054 MI
WEST FRONTAGE CONNECTOR	= 1,402.58 FT = 0.266 MI
GROSS AND NET LENGTH	= 30,140.54 FT = 5.709 MI



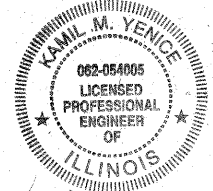
SIGNATURE: *S.S. Rikhiraj*
 DATE: 1/27/2011
 NAME: SADHU SINGH RIKHIRAJ
 EXP. 11/30/2011
 SHEETS: 167-203



SIGNATURE: *Richard A. Young*
 DATE: 1/27/2011
 NAME: RICHARD YOUNG
 EXP. 11/30/2011
 SHEETS: 87-147



Kamil Yenice
 SIGNATURE:
 DATE: 2/4/11
 NAME: KAMIL YENICE
 EXP. 11/30/2011
 SHEETS: 347-436



STATE OF ILLINOIS
 DEPARTMENT OF TRANSPORTATION
 DIVISION OF HIGHWAYS

SUBMITTED _____ 20 _____

DEPUTY DIRECTOR OF HIGHWAYS, REGION ENGINEER

_____ 20 _____

ENGINEER OF DESIGN AND ENVIRONMENT

_____ 20 _____

DIRECTOR OF HIGHWAYS, CHIEF ENGINEER

**PRINTED BY THE AUTHORITY
 OF THE STATE OF ILLINOIS**