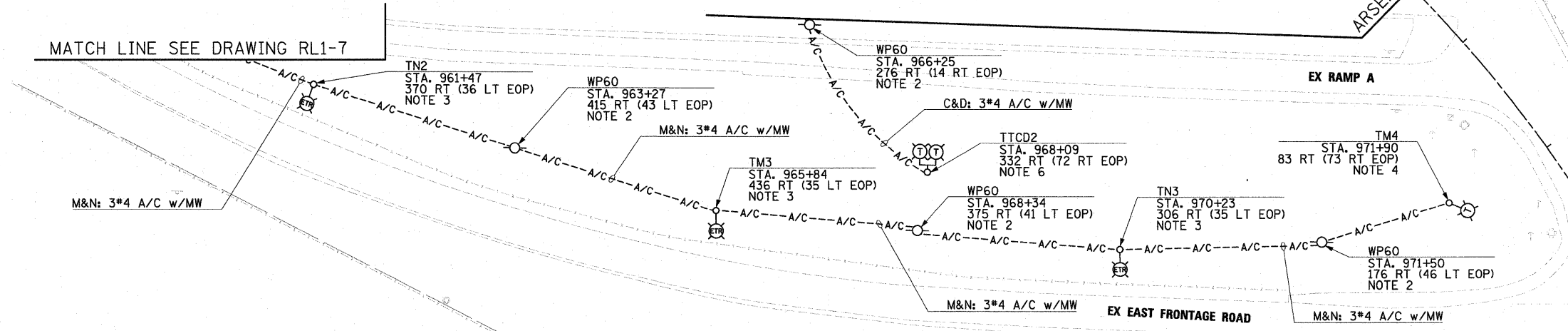


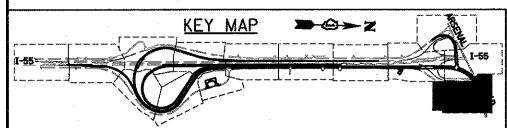
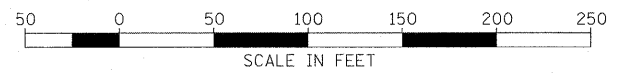
MATCH LINE
SEE DRAWING RL1-9
ARSENAL RD STA. 970+50.00

MATCH LINE SEE DRAWING RL1-7



NOTES:

1. SEE DRAWING GE-1 FOR ELECTRICAL SYMBOLS AND ABBREVIATIONS. SEE DRAWING GE-2 FOR ELECTRICAL GENERAL NOTES AND SUGGESTED LIGHTING PHASING NOTES.
2. INSTALL 60 FOOT WOOD LIGHT POLES AS SHOWN. SEE DRAWING ED-6 FOR TEMPORARY LIGHT POLE INSTALLATION DETAIL. THIS WORK SHALL BE INCLUDED IN THE "LIGHT POLE, WOOD, 60 FOOT, CLASS 4 (INSTALL ONLY)" PAY ITEM. SEPARATE PAYMENT WILL NOT BE MADE.
3. RELOCATE TEMPORARY LIGHTING UNIT REMOVED ON DRAWINGS RL1-1, RL1-2, AND RL1-3 AS SHOWN. SEE DRAWING ED-6 FOR TEMPORARY LIGHT POLE INSTALLATION DETAILS. THIS WORK SHALL BE INCLUDED IN THE "RELOCATE EXISTING LIGHTING UNIT, SPECIAL" PAY ITEM. SEPARATE PAYMENT WILL NOT BE MADE.
4. FURNISH AND INSTALL NEW TEMPORARY LIGHTING UNIT. THIS WORK SHALL BE INCLUDED IN THE "LIGHT POLE, WOOD, 100 FOOT, CLASS 1, WITH 15FT MAST ARM" PAY ITEM. 750W HPS HORIZONTAL MOUNT LUMINAIRE(S) WILL BE PAID FOR SEPARATELY.
5. SEE IDOT STANDARD DRAWING BE-800 FOR TEMPORARY LIGHT POLE CABLE ATTACHMENT DETAIL.
6. FURNISH AND INSTALL TEMPORARY LIGHTING UNIT, CONSISTING OF 100 FOOT WOOD LIGHT POLE, WITH 15 FOOT MAST ARM, 750W HPS HORIZONTAL MOUNT LUMINAIRE, BULLHORN MOUNTING BRACKET, ASSOCIATED WIRING AND GROUNDING. SEE TO DRAWINGS ED-6 AND ED-7 FOR INSTALLATION DETAILS. THIS WORK SHALL BE INCLUDED IN THE "LIGHT POLE, WOOD, 100 FOOT, CLASS 1, WITH 15FT MAST ARM" PAY ITEM. 750W HORIZONTAL MOUNT LUMINAIRE(S) WILL BE PAID FOR SEPARATELY.



McDonough Associates Inc.
 Engineers / Architects
 130 East Randolph Street Chicago, Illinois 60601

FILE NAME = D:\60F12-SHT-RL1-10.dgn	USER NAME = Tk1uerg1	DESIGNED - JLW	REVISED -	STATE OF ILLINOIS DEPARTMENT OF TRANSPORTATION	I-55 AT ARSENAL ROAD PROPOSED ROADWAY LIGHTING PLAN-STAGE 1			F.A.I RTE.	SECTION	COUNTY	TOTAL SHEETS	SHEET NO.
PLOT SCALE = 1:50	DESIGNED - CJM	REVISED -	55		99-2HB-2B-1	WILL	756	358				
PLOT DATE = 3/3/2011	CHECKED - KMY	REVISED -	CONTRACT NO. 60F12									
DATE = 2/4/11	REVISED -	SCALE: 1" = 50'	SHEET NO. 10 OF 10 SHEETS		STA.	TO STA.	FED. ROAD DIST. NO. 1 ILLINOIS FED. AID PROJECT					