


**NOTES:**

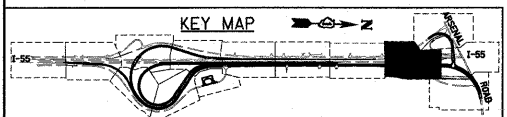
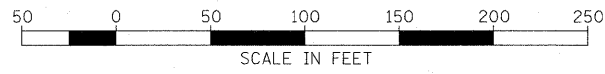
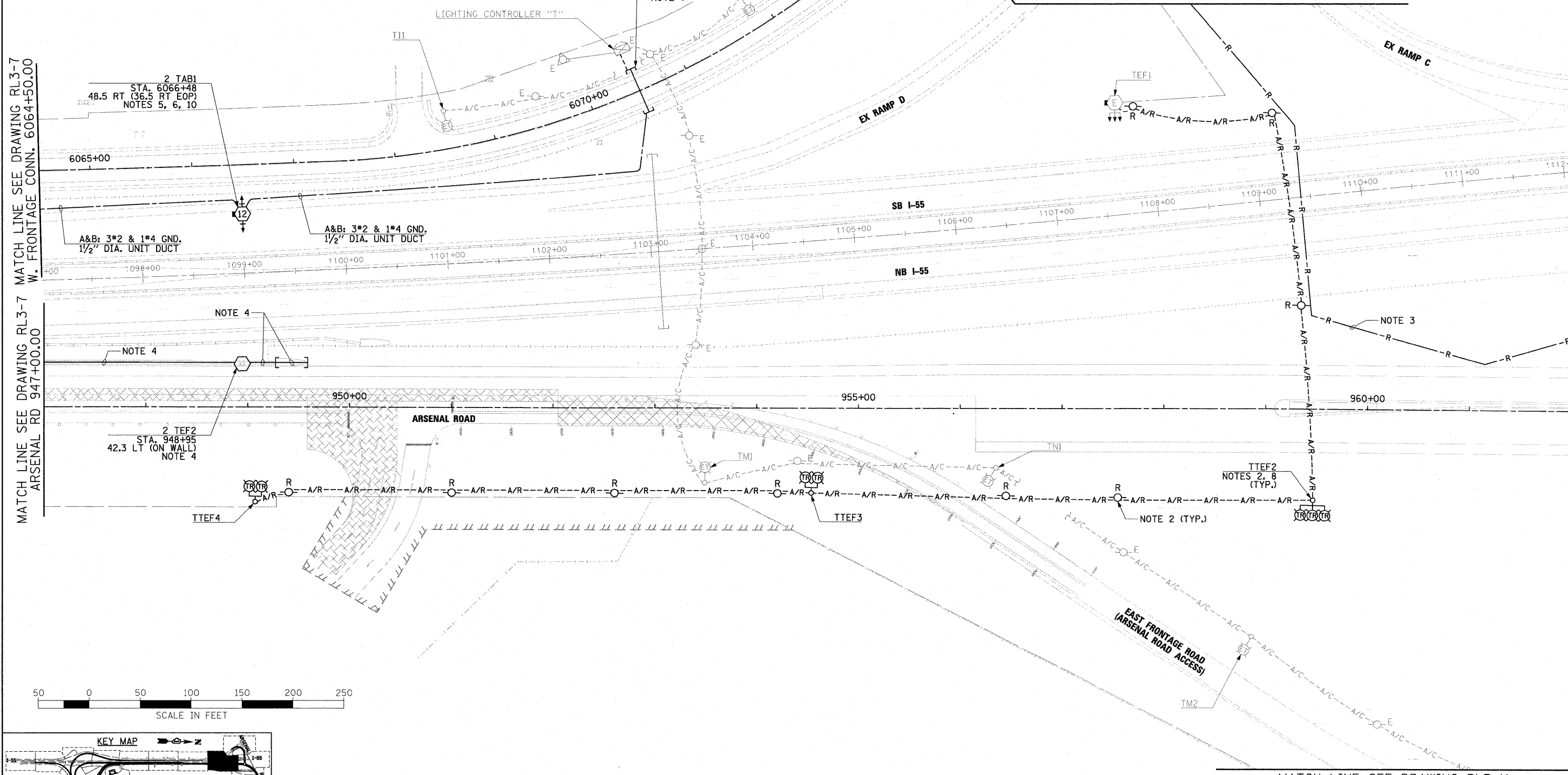
1. SEE DRAWING GE-1 FOR ELECTRICAL SYMBOL LIST AND ABBREVIATIONS. SEE DRAWING GE-2 FOR ELECTRICAL GENERAL NOTES AND SUGGESTED LIGHTING PHASING NOTES.
2. DISCONNECT AND REMOVE THE PART OF THE TEMPORARY LIGHTING SYSTEM SHOWN. THE WORK INCLUDES BUT IS NOT LIMITED TO, REMOVAL OF AERIAL CABLES, WOOD LIGHT POLE, MAST ARM, LUMINAIRE MOUNTING BRACKET AND LUMINAIRE(S). THIS WORK SHALL BE INCLUDED IN THE "REMOVAL OF LIGHTING UNIT, SALVAGE" PAY ITEM. REMOVAL OF WOOD LIGHT POLE FOUNDATION WILL BE PAID FOR SEPARATELY UNDER "REMOVAL OF WOOD POLE FOUNDATION, CONCRETE" PAY ITEM.
3. ABANDON EXISTING UNDERGROUND ELECTRIC CABLES AS SHOWN.
4. SEE STAGE 2 DRAWING RL2-11 FOR ADDITIONAL WORK ASSOCIATED WITH HIGH MAST TOWERS LOCATED ON RETAINING WALL.
5. FURNISH AND INSTALL HIGH MAST LIGHT TOWER FOUNDATIONS SHOWN. INCLUDE GROUND WELLS, GROUND RODS, GROUND WIRE, ANCHOR BOLTS, AND LIGHT TOWER SERVICE PAD. SEE DRAWINGS S-2 THROUGH S-5, AND ED-9 FOR HIGH MAST LIGHT TOWER FOUNDATION DETAILS. EXCEPT FOR THE LIGHT TOWER SERVICE PAD, THIS WORK SHALL BE INCLUDED IN THE "LIGHT TOWER FOUNDATION, 54" DIAMETER" PAY ITEM.

6. SEE IDOT STANDARD DRAWINGS BE-505a, BE-505b, AND BE-505c FOR HIGH MAST LIGHT TOWER INSTALLATION DETAILS. THIS WORK SHALL BE INCLUDED IN "LIGHT TOWER, 120 FOOT MOUNTING HEIGHT, LUMINAIRE MT. - 12" PAY ITEM. SEPARATE PAYMENT WILL NOT BE MADE.
7. FOUR PUSHED CONDUITS PREVIOUSLY INSTALLED IN STAGE 1. SEE DRAWING RL1-7. NO ADDITIONAL PAYMENT WILL BE MADE FOR THE CONDUIT. UTILIZE ONE OF THE EXISTING CONDUITS FOR UNIT DUCT RUN SHOWN.
8. LUMINAIRES REMOVED AS PART OF "REMOVAL OF LIGHTING UNIT, SALVAGE" PAY ITEM IN STAGE 3 SHALL BE UTILIZED FOR PERMANENT LIGHTING IN STAGE 4. ALL LUMINAIRES WILL BE INSPECTED BY THE ENGINEER. NON-OPERATING OR DAMAGED LUMINAIRES SHALL BE REPAIRED OR REPLACED IN KIND IN ACCORDANCE WITH STANDARD SPECIFICATION 841.02.
9.  INDICATES TEMPORARY PAVEMENT INSTALLATION LIMITS. SEE MAINTENANCE OF TRAFFIC DRAWINGS FOR CONSTRUCTION STAGING INFORMATION.
10. SEE DRAWING ED-2 FOR CONDUIT INSTALLATION DETAILS FOR GROUND MOUNTED HIGH MAST LIGHT TOWERS.

MATCH LINE SEE DRAWING RL3-7  
W. FRONTAGE CONN. 6064+50.00

MATCH LINE SEE DRAWING RL3-7  
ARSENAL RD 947+00.00

MATCH LINE SEE DRAWING RL3-10  
ARSENAL RD STA. 962+00.00



MATCH LINE SEE DRAWING RL3-11

McDonough Associates Inc.  
Engineers / Architects  
130 East Randolph Street Chicago, Illinois 60601

FILE NAME = D:\5012-SHT-RL3-8.dgn	USER NAME = TKLuegel	DESIGNED - JLW	REVISED -
PLOT SCALE = 1:52	CHECKED - KMY	DRAWN - CJM	REVISED -
PLOT DATE = 3/3/2011	DATE - 2/4/11	CHECKED - KMY	REVISED -

**STATE OF ILLINOIS  
DEPARTMENT OF TRANSPORTATION**

**I-55 AT ARSENAL ROAD  
PROPOSED ROADWAY LIGHTING PLAN-STAGE 3**

SCALE: 1" = 50'    SHEET NO. 8 OF 11 SHEETS    STA.    TO STA.

F.A.I. RTE.	SECTION	COUNTY	TOTAL SHEETS	SHEET NO.
55	99-2HB-2B-1	WILL	756	378
CONTRACT NO. 60F12			ILLINOIS FED. AID PROJECT	