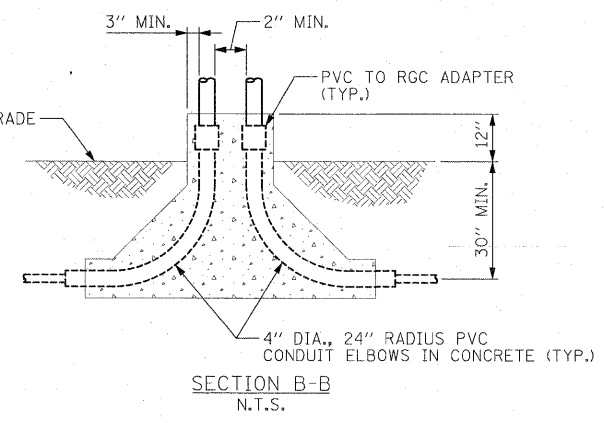
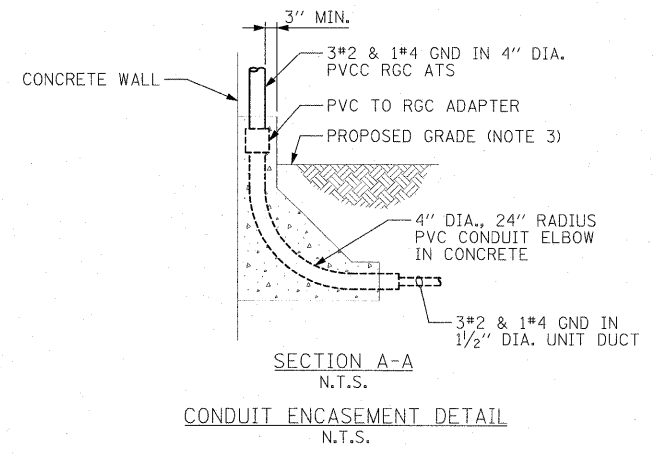
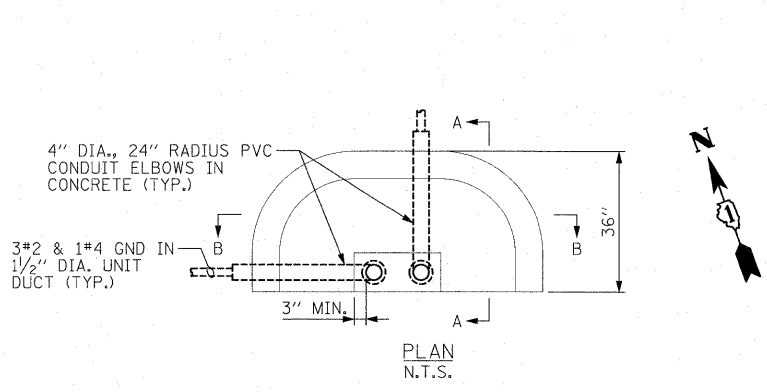
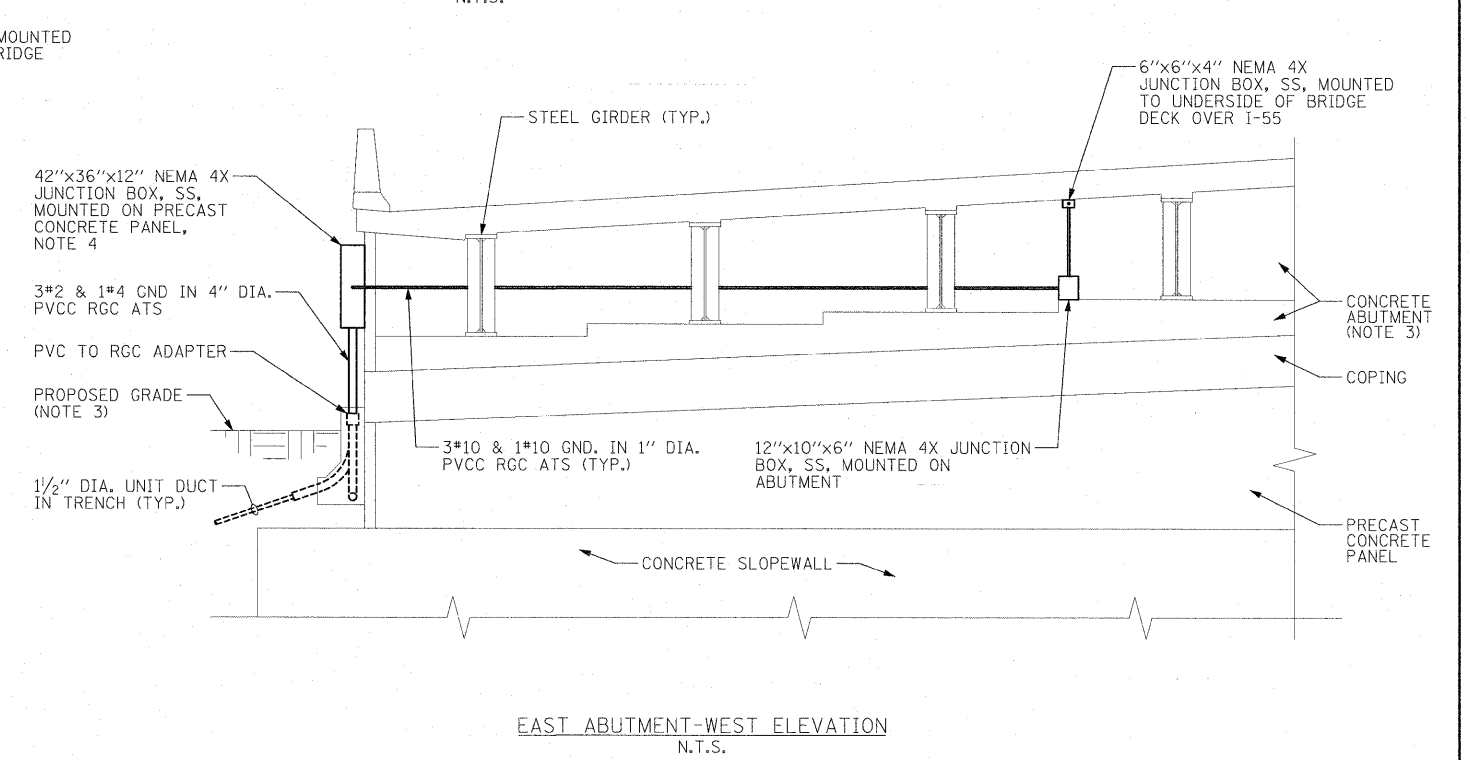
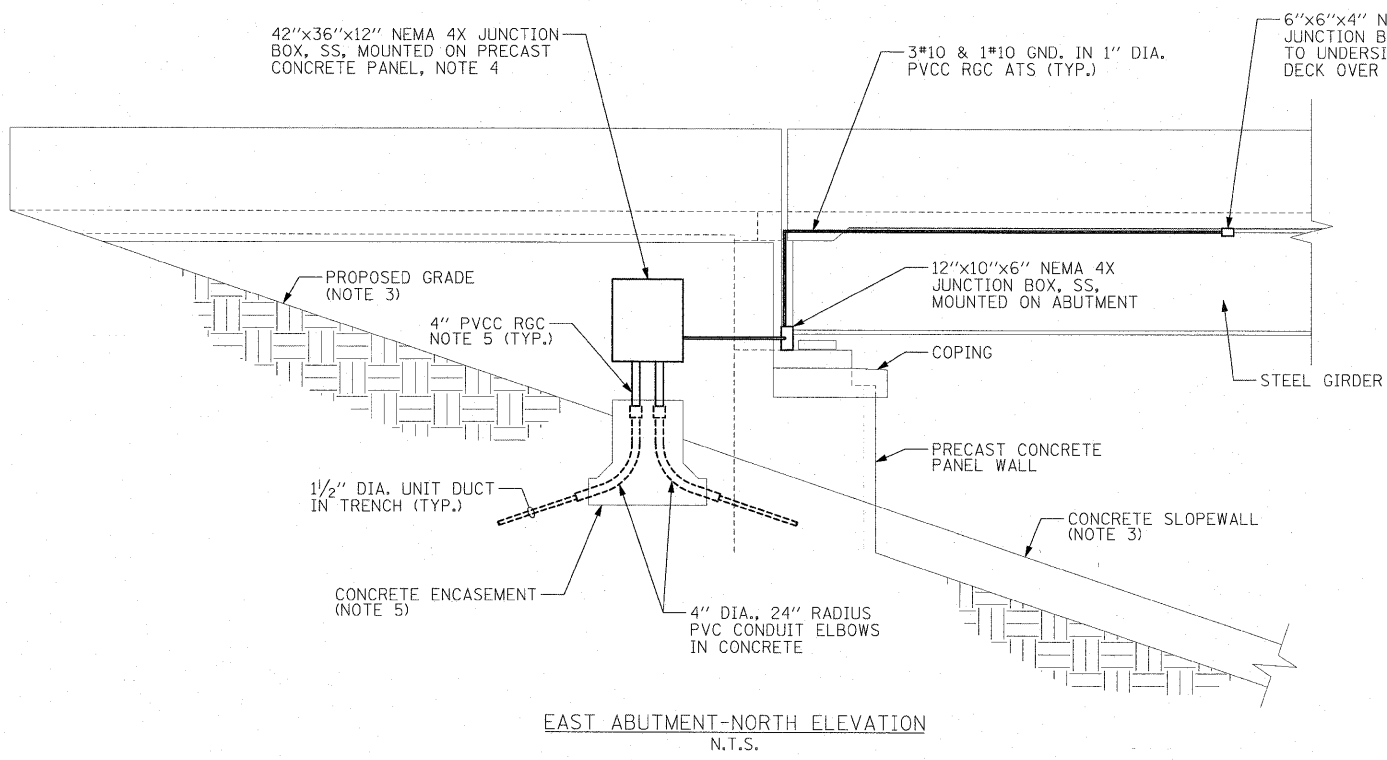


- NOTES:**
- SEE DRAWING GE-1 FOR ELECTRICAL SYMBOL LIST AND ABBREVIATIONS. SEE DRAWING GE-2 FOR ELECTRICAL GENERAL NOTES AND SUGGESTED LIGHTING PHASING NOTES.
 - SEE DRAWINGS RL3-3 AND UL-1 FOR LIGHTING FIXTURES, JUNCTION BOXES, AND UNIT DUCT ROUTING AT RAMP C. SEE IDOT STANDARD DRAWING BE-900 FOR FIXTURE MOUNTING DETAILS.
 - SEE STRUCTURAL DRAWINGS SC-1 THRU SC-37 FOR RAMP C BRIDGE CONCRETE ABUTMENT AND DECK FRAMING DETAILS. SEE DRAWING GP-3 (VOLUME 1) FOR FINAL GRADING AT RAMP C BRIDGE.
 - JUNCTION BOX CONTAINS 30A FUSES AND SOLID SLUG FOR NEUTRAL CONDUCTOR. SEE DRAWING UL-1 FOR TYPICAL UNDERPASS LIGHTING UNIT WIRING DIAGRAM.
 - THE COST OF 4" DIA. PVCC RGC, ATS AND CONCRETE ENCASEMENT SHALL BE INCLUDED IN THE COST OF "JUNCTION BOX, STAINLESS STEEL, ATTACHED TO STRUCTURE, 42"x36"x12" PAY ITEM. SEPARATE PAYMENT WILL NOT BE MADE.



McDonough Associates Inc.
Engineers / Architects
130 East Randolph Street Chicago, Illinois 60601

FILE NAME = D:\60F12-SHT-ED-3.dgn	USER NAME = TKluagel	DESIGNED - JLW	REVISED -
PLDT SCALE = 1:1	CHECKED - KMY	DRAWN - CJM	REVISED -
PLDT DATE = 3/7/2011	DATE - 2/4/11	CHECKED - KMY	REVISED -

**STATE OF ILLINOIS
DEPARTMENT OF TRANSPORTATION**

**I-55 AT ARSENAL ROAD
RAMP C BRIDGE CONDUIT INSTALLATION DETAILS**

SCALE: SHEET NO. 1 OF 1 SHEET STA. TO STA.

F.A.I. RTE. 55	SECTION 99-2HB-2B-1	COUNTY WILL	TOTAL SHEETS 756	SHEET NO. 418
CONTRACT NO. 60F12				
FED. ROAD DIST. NO. 1 ILLINOIS FED. AID PROJECT				