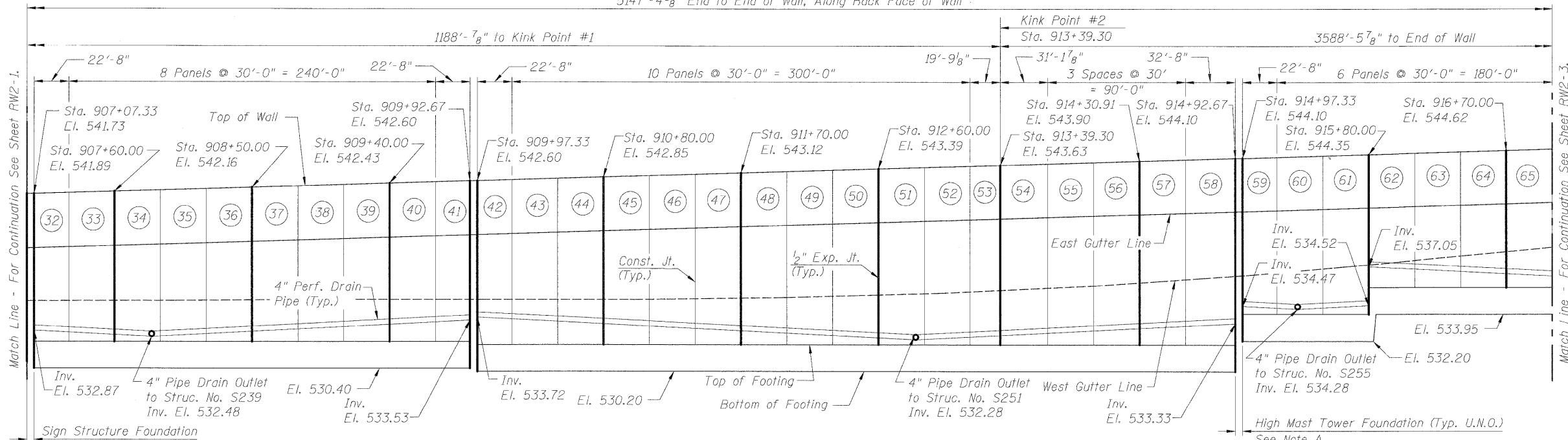
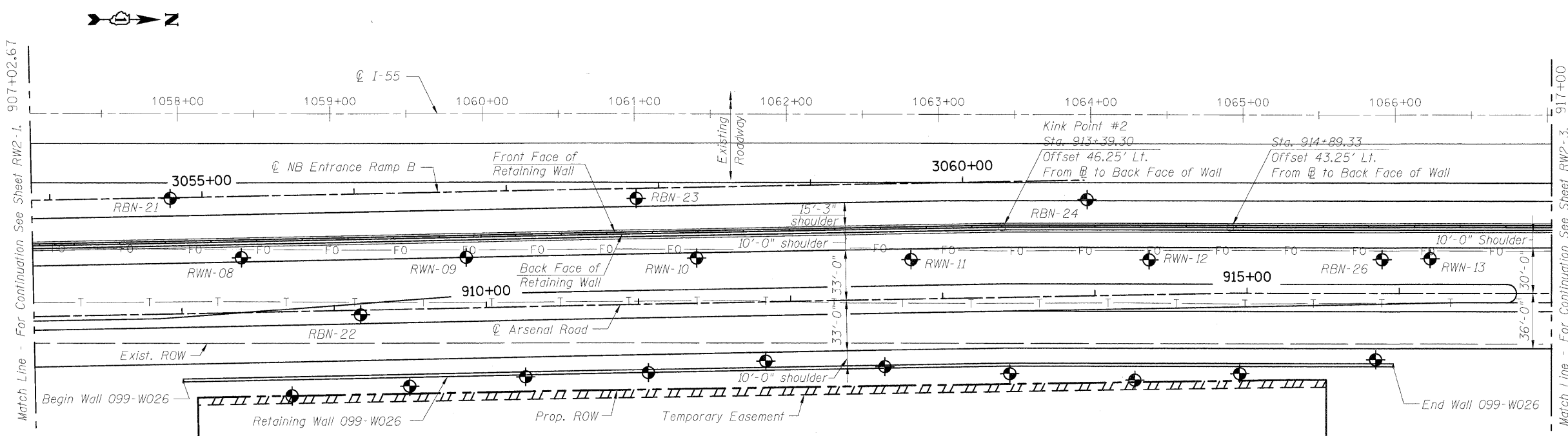


STATE OF ILLINOIS
DEPARTMENT OF TRANSPORTATION

5147'-4⁵/₈" End to End of Wall, Along Back Face of Wall



ELEVATION
(Looking at Back Face of Wall)



PLAN

- NOTES:**
- Offsets are measured from the \odot of Arsenal Rd. u.n.o.
 - Construction joints shall be placed at 30' on center and expansion joints shall be placed at 90' on center, u.n.o.

- LEGEND:**
- \odot = Soil Boring
 - (1) = Panel No.

DESIGNED	PMH
CHECKED	MJL
DRAWN	PMH
CHECKED	BB

McDonough Associates Inc.
Engineers / Architects
130 East Randolph Street
Chicago, Illinois 60601
(312) 946-8600

SHEET NO. RW2-2 SHEETS RW2-31	F.A.I. RTE.	SECTION	COUNTY	TOTAL SHEETS	SHEET NO.
	55	(99-1&2) R-6	WILL	756	466
FED. ROAD DIST. NO.			ILLINOIS FED. AID PROJECT		
CONTRACT NO. 60F12					

GENERAL PLAN & ELEVATION-2
STRUCTURE NO. 099-W027