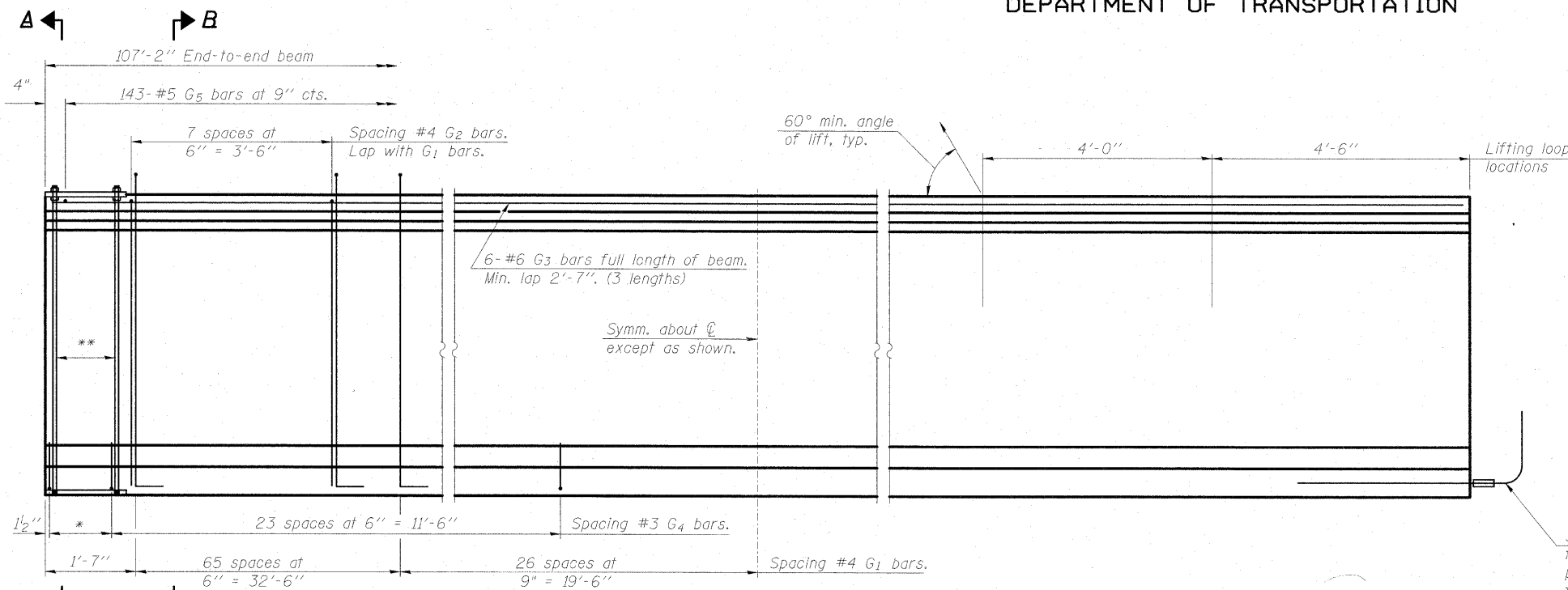
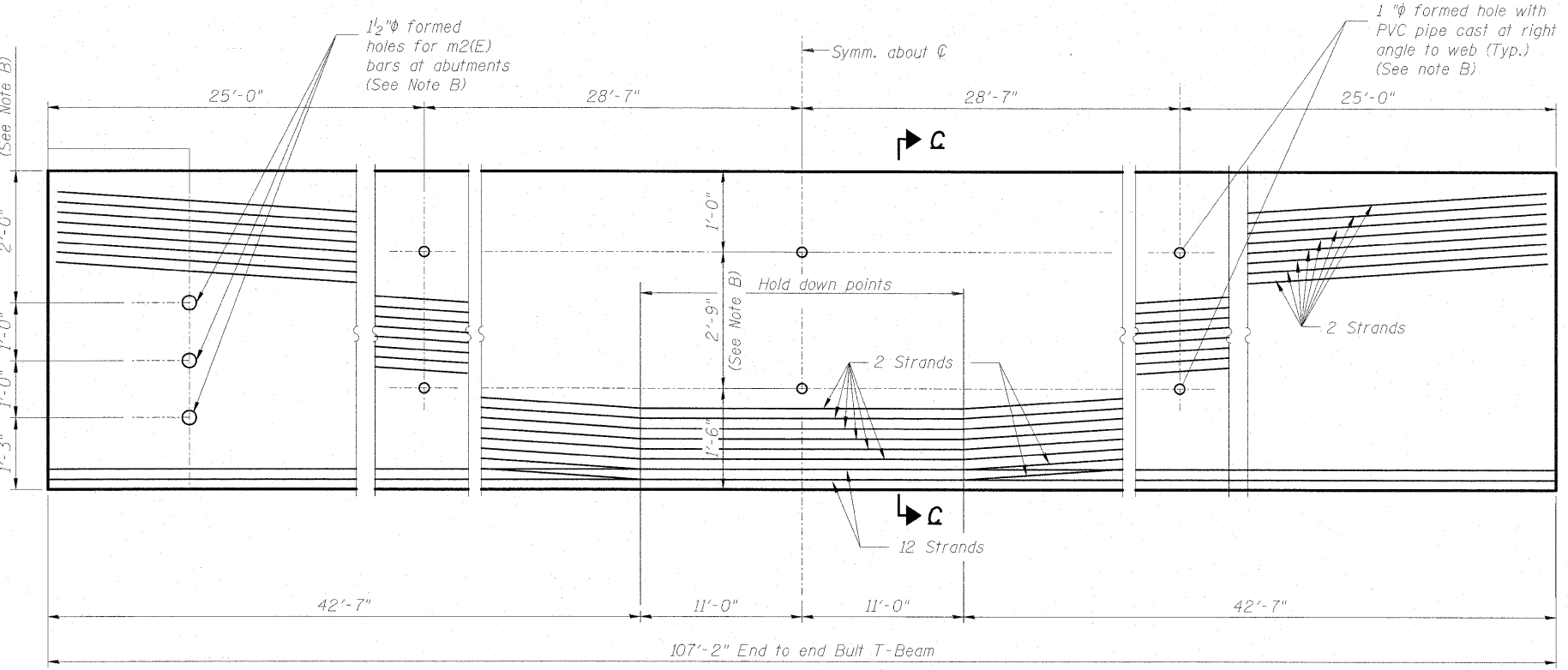


STATE OF ILLINOIS
DEPARTMENT OF TRANSPORTATION

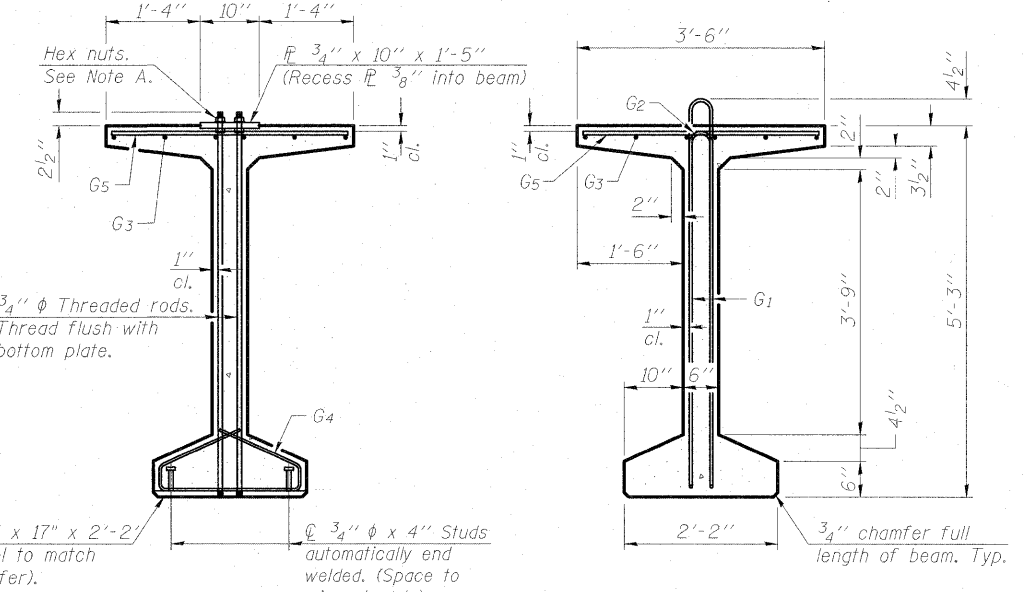


ELEVATION OF BEAM
(Showing reinforcement & dimensions)

* 4 spaces at 3/4" = 1'-1".
** 5-3/4" φ threaded dowel rods at 3/4" cts., each face.



ELEVATION OF BEAM
(Showing prestressing steel)



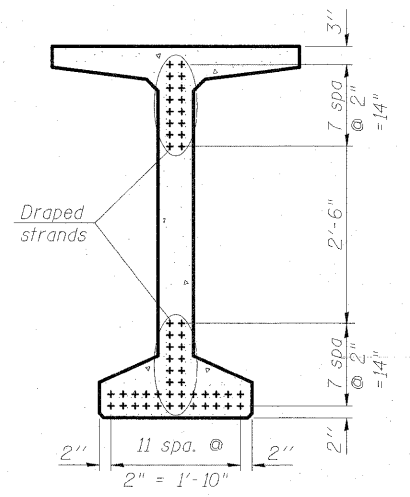
SECTION A-A

SECTION B-B

3-#8 G6 bar assembly with threaded coupler splice at pier only. (See sheet SF15 for details).

Note A:
Hex nuts (top and bottom) with lock washers (top). Only tighten sufficiently to compress lock washers.

Note B:
Fabricator of the T-beam shall locate holes to miss strands within permissible tolerances.



SECTION C-C

***** BAR LIST
ONE BEAM ONLY**

Bar	No.	Size	Length	Shape
G ₁	132	#1	11'-11"	⊔
G ₂	16	#4	10'-2"	⊔
G ₃	18	#6	37'-4"	⊔
G ₄	56	#3	4'-11"	⊔
G ₅	143	#5	3'-4"	⊔
G ₆	3	#8	6'-7"	⊔

*** For information only

Notes:
See sheet SF15 for additional details and Bill of Material.
Required release strength, f'cl, shall be 6,000 psi.

DESIGNED	MJL
CHECKED	PMH
DRAWN	RJ
CHECKED	BKB

McDonough Associates Inc.
Engineers / Architects
130 East Randolph Street
Chicago, Illinois 60601
(312) 946-8600

SHEET NO. SF14 SF24 SHEETS	F.A.I. RTE.	SECTION	COUNTY	TOTAL SHEETS	SHEET NO.
	55	92-2HB-2B-1	WILL	756	516
	SN 099-0347			CONTRACT NO. 60F12	
FED. ROAD DIST. NO.		ILLINOIS FED. AID PROJECT			

**63" PPC BULB T-BEAM
STRUCTURE NO. 099-0347**