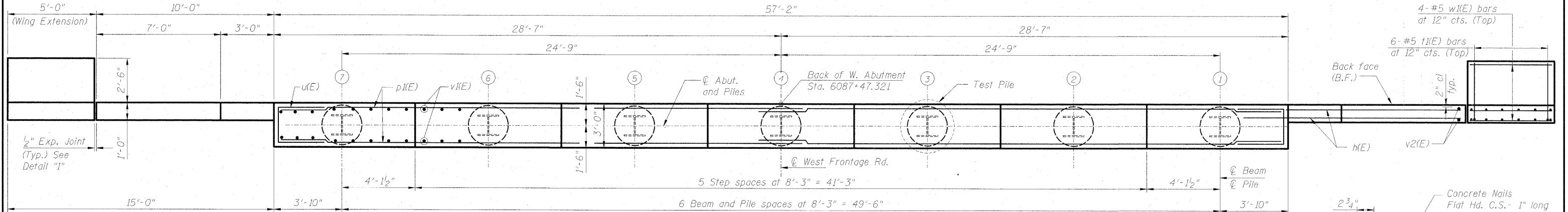
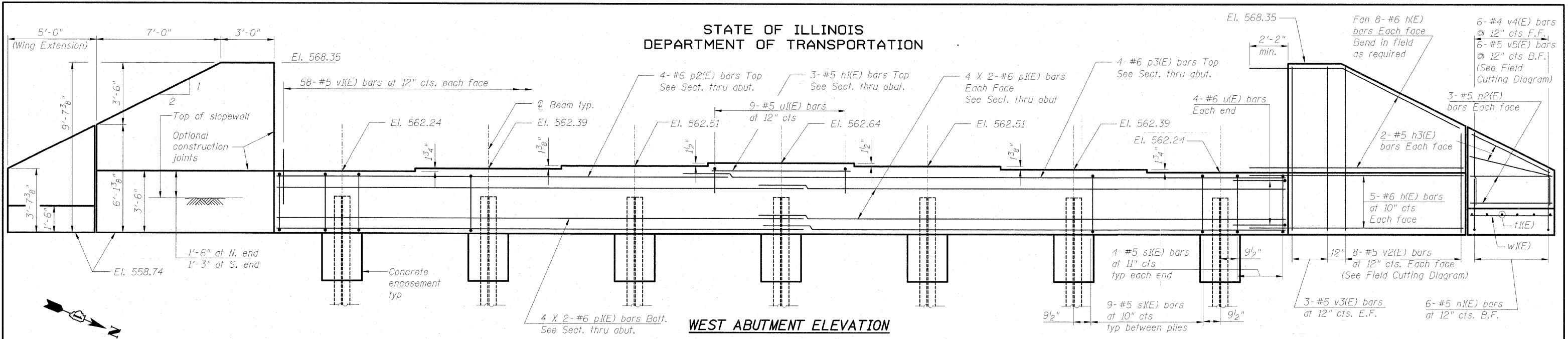
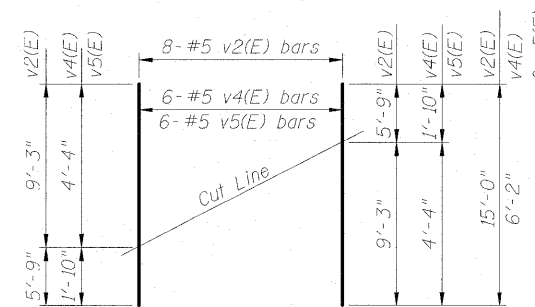


STATE OF ILLINOIS
DEPARTMENT OF TRANSPORTATION



PILE DATA (WEST ABUTMENT)

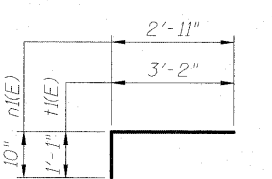
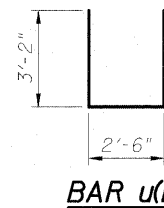
Type: HP 14 x 89 w/ Pile Shoes
 Nominal Required Bearing: 705 kips
 Allowable Resistance Available: 231 kips
 Est. Length: 26 ft.
 No. Production Piles: 7 (Includes test pile)
 No. Test Piles: 1



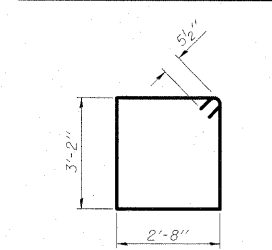
FIELD CUTTING DIAGRAM

Order v2(E) full length. Cut as shown and use remainder of bars in opposite face.
 Order v4 (E) or v5 (E) full length. Cut as shown and use remainder of bars in other end.

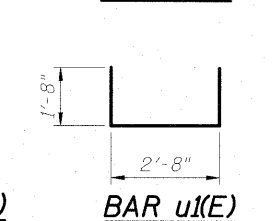
DESIGNED	MJL
CHECKED	PMH
DRAWN	RJ
CHECKED	BKB



BARS n1(E) & t1(E)



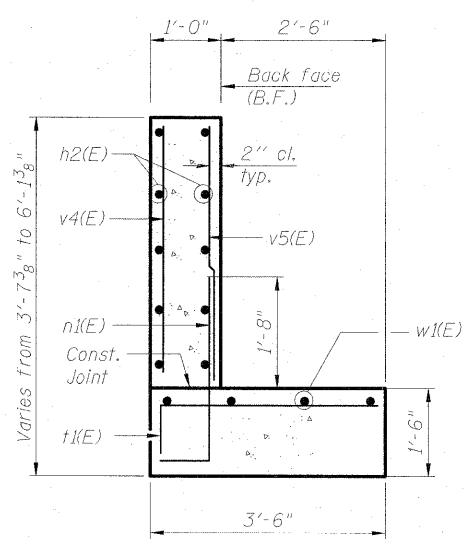
BAR s1(E)



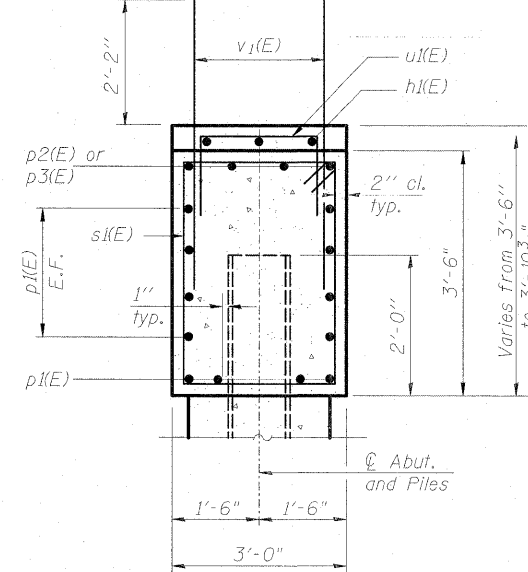
BILL OF MATERIAL

Bar	No.	Size	Length	Shape
h1(E)	52	#6	12'-10"	
h1(E)	3	#5	8'-0"	
h2(E)	12	#5	4'-8"	
h3(E)	8	#5	5'-3"	
n1(E)	6	#5	3'-9"	
p1(E)	24	#6	29'-6"	
p2(E)	4	#6	26'-0"	
p3(E)	4	#6	34'-0"	
s1(E)	62	#5	12'-7"	
t1(E)	6	#5	4'-3"	
u1(E)	8	#6	8'-10"	
u1(E)	9	#5	6'-0"	
v1(E)	116	#5	4'-4"	
v2(E)	16	#5	15'-0"	
v3(E)	12	#5	9'-3"	
v4(E)	6	#4	6'-2"	
v5(E)	6	#5	6'-2"	
w1(E)	8	#5	4'-8"	
Reinforcement Bars, Epoxy Coated		Pound	4,570	
Concrete Structures		Cu. Yd.	31.1	
Concrete Encasement		Cu. Yd.	3.8	
Furnishing Steel Piles HP14X89		Foot	156	
Driving Piles		Foot	156	
Pile Shoes		Each	7	
Test Pile Steel HP14X89		Each	1	

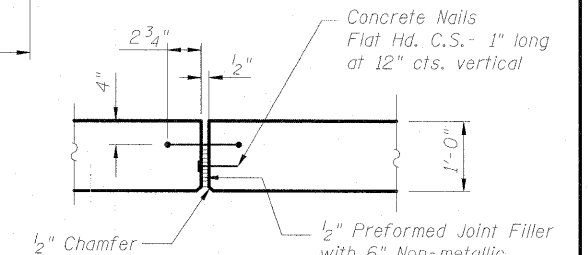
PLAN



SECTION THRU WING EXTENSION



SECTION THRU ABUTMENT



DETAIL 'I'
(Expansion Joint Details)

MINIMUM BAR LAP
(Abutment)
 Top bars #6 bar = 2'-10"
 Other bars #6 bar = 2'-0"

Notes:
 Pour steps monolithically with cap.
 For details of Bar Splicers, see Sht. SF22.
 For details of piles and Concrete Encasement, see Sht. SF21.
 Bars indicated thus 2 x 2-#6 etc. indicates 2 lines of bars with 2 lengths per line.

**WEST ABUTMENT
STRUCTURE NO. 099-0347**

McDonough Associates Inc.
 Engineers / Architects
 130 East Randolph Street
 Chicago, Illinois 60601
 (312) 946-8600

SHEET NO. SF16	F.A.I. RTE.	SECTION	COUNTY	TOTAL SHEETS	SHEET NO.
	55	92-2HB-2B-1	WILL	756	518
SF24 SHEETS		SN 099-0347	CONTRACT NO. 60F12		
FED. ROAD DIST. NO.		ILLINOIS FED. AID PROJECT			