

STATE OF ILLINOIS
DEPARTMENT OF TRANSPORTATION

NORTH EDGE OF SHOULDER

Location	Station	Offset	Theoretical Grade Elevations
W. End West Appr. Pav't	202798.69	-35.00	552.30
A1	202809.13	-35.00	552.45
A2	202819.56	-35.00	552.59
E. End West Appr. Pav't	202831.20	-35.00	552.74

NORTH EDGE OF PAVEMENT

Location	Station	Offset	Theoretical Grade Elevations
W. End West Appr. Pav't	202819.09	-14.00	553.85
A1	202829.26	-14.00	553.98
A2	202839.43	-14.00	554.10
E. End West Appr. Pav't	202850.04	-14.00	554.22

RAMP C AND PROFILE GRADE LINE

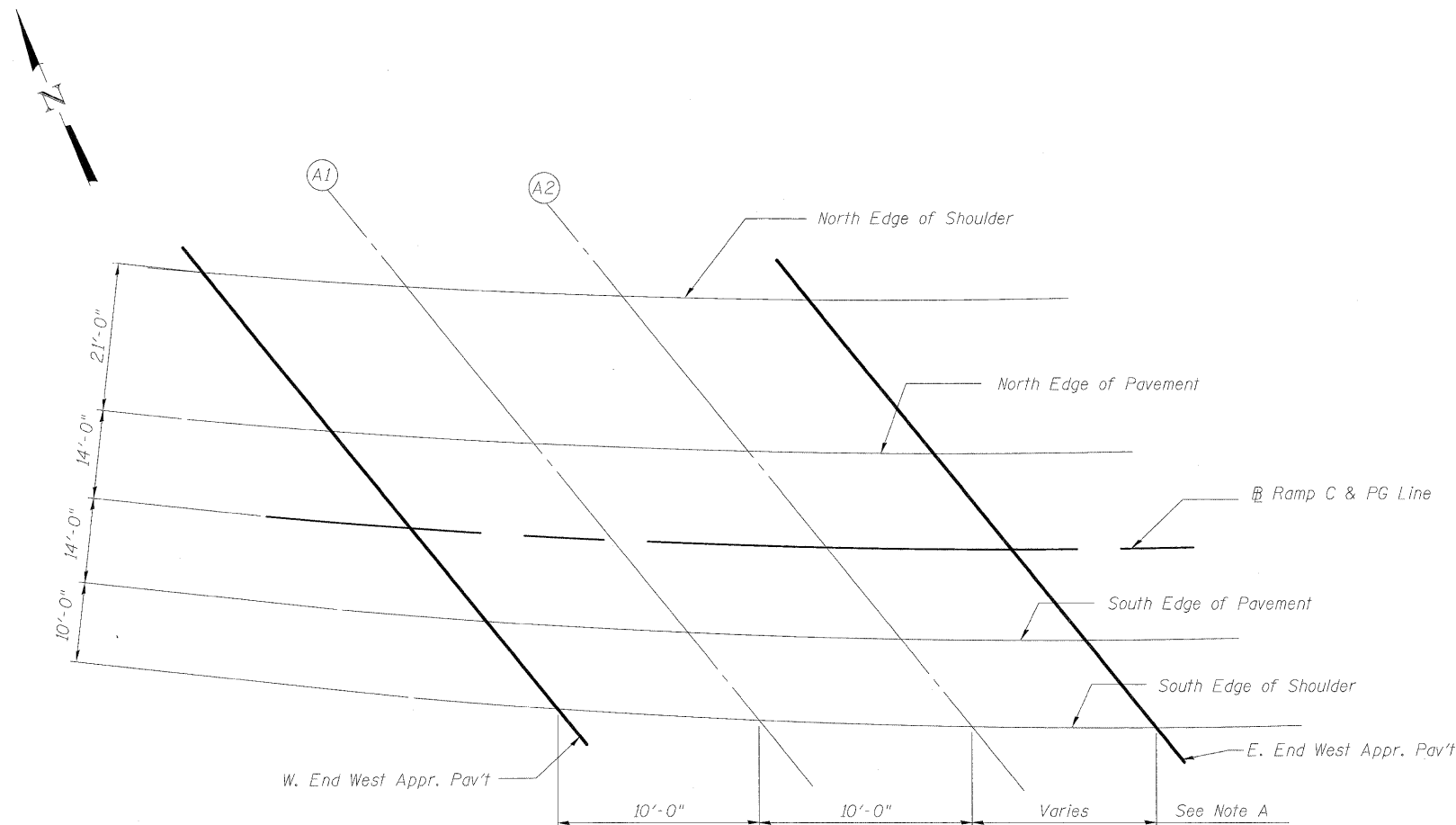
Location	Station	Offset	Theoretical Grade Elevations
W. End West Appr. Pav't	202831.89	0	554.85
A1	202841.89	0	554.97
A2	202851.89	0	555.08
E. End West Appr. Pav't	202861.89	0	555.18

SOUTH EDGE OF PAVEMENT

Location	Station	Offset	Theoretical Grade Elevations
W. End West Appr. Pav't	202844.10	14.00	555.83
A1	202853.93	14.00	555.94
A2	202863.76	14.00	556.04
E. End West Appr. Pav't	202873.21	14.00	556.13

SOUTH EDGE OF SHOULDER

Location	Station	Offset	Theoretical Grade Elevations
W. End West Appr. Pav't	202852.48	24.00	556.52
A1	202862.20	24.00	556.63
A2	202871.92	24.00	556.72
E. End West Appr. Pav't	202881.00	24.00	556.80



Note A:
The spacing is along the edges of the shoulders, edges of pavement and R Ramp C.

PLAN
(West Approach Slab)

DESIGNED	MJL
CHECKED	PMH
DRAWN	MJL
CHECKED	PMI

McDonough Associates Inc.
Engineers / Architects
130 East Randolph Street
Chicago, Illinois 60601
(312) 946-8600

**TOP OF WEST APPROACH
SLAB ELEVATIONS
STRUCTURE NO. 099-0348**

SHEET NO. SC-4 SHEETS SC-37	F.A.I. RTE.	SECTION	COUNTY	TOTAL SHEETS	SHEET NO.
	55	(99-1&2) R-6	WILL	756	530
CONTRACT NO. 60F12					
FED. ROAD DIST. NO. ILLINOIS FED. AID PROJECT					