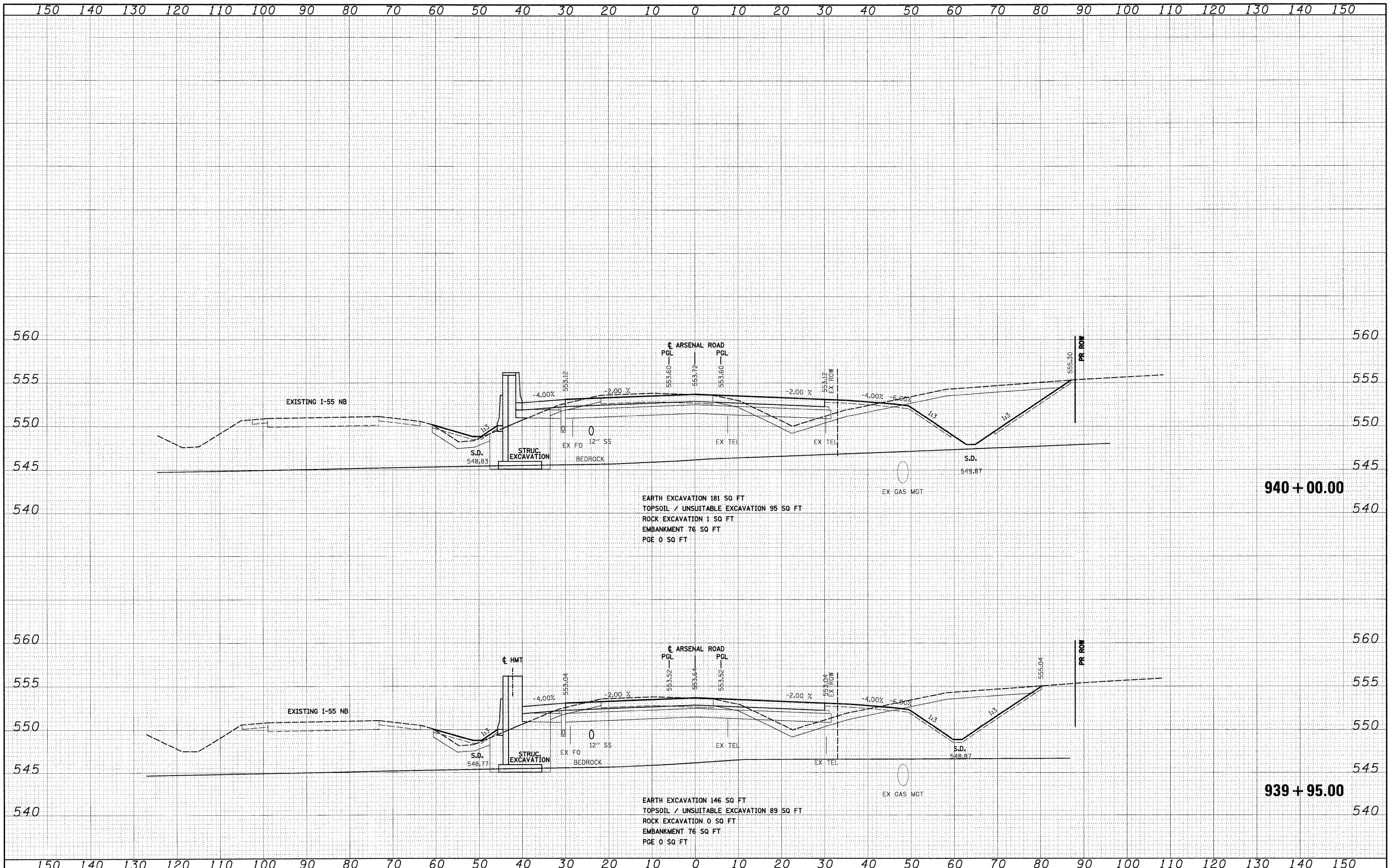


FINAL	SURVEYED	DATE
SURVEY	BY	
NOTE BOOK		
AREAS CHECKED		
NO.		

ORIGINAL	SURVEYED	DATE
SURVEY	BY	
NOTE BOOK		
AREAS CHECKED		
NO.		

McDonough Associates Inc.
 Engineers / Architects
 198 East Randolph Street, Chicago, Illinois 60601



EARTH EXCAVATION 181 SQ FT
 TOPSOIL / UNSUITABLE EXCAVATION 95 SQ FT
 ROCK EXCAVATION 1 SQ FT
 EMBANKMENT 76 SQ FT
 PGE 0 SQ FT

EARTH EXCAVATION 146 SQ FT
 TOPSOIL / UNSUITABLE EXCAVATION 89 SQ FT
 ROCK EXCAVATION 0 SQ FT
 EMBANKMENT 76 SQ FT
 PGE 0 SQ FT

FILE NAME = D:\B0F12-SHT-XSSH01.dgn
 USER NAME = TKLuegel
 PLOT SCALE = 1:10
 PLOT DATE = 2/3/2011

DESIGNED - TRK	REVISED -
DRAWN - TRK	REVISED -
CHECKED - DLT	REVISED -
DATE - 2/4/11	REVISED -

**STATE OF ILLINOIS
 DEPARTMENT OF TRANSPORTATION**

ARSENAL ROAD CROSS SECTIONS
 SCALE: 1"=10'H; 1"=5'V SHEET NO. 21 OF 62 SHEETS STA. 939+95.00 TO STA. 940+00.00

F.A.I. RTE. 55	SECTION 99-2HB-2B-1	COUNTY WILL	TOTAL SHEETS 756	SHEET NO. 622
CONTRACT NO. 60F12				
FED. ROAD DIST. NO. 1 ILLINOIS FED. AID PROJECT				