

PIPE REMOVAL NOTES

PRIOR TO SANITARY REMOVAL, CAPPING OR FILLING, EXISTING SYSTEM TO BE JET AND VACCUUMED.

REMOVE EX. 10" SANITARY PIPE FROM STA. 100+09 78.5' RT TO STA. 100+46.0, 68.1' RT
 REMOVE EX. 10" SANITARY PIPE FROM STA. 100+58.3, 55.4' RT TO STA. 101+25.3, 36.1' RT
 ABANDON EX. 10" SANITARY PIPE FROM STA. 100+46.0, 68.1' RT TO STA. 100+58.3, 55.4' RT

REMOVE EX. 8" WATER MAIN PIPE FROM STA. 100+11.73, 85.15' RT TO STA. 100+52.2, 69.7' RT
 REMOVE EX. 8" WATER MAIN PIPE FROM STA. 100+64.5, 55.4' RT TO STA. 101+42.5, 41.5' RT
 ABANDON EX. 8" WATER MAIN PIPE FROM STA. 100+52.2, 69.7' RT TO STA. 100+64.5, 55.4' RT

ABANDON EX. 8" WATER MAIN PIPE FROM STA. 101+62.5, 41.3' RT TO STA. 103+40.9, 27.0' LT

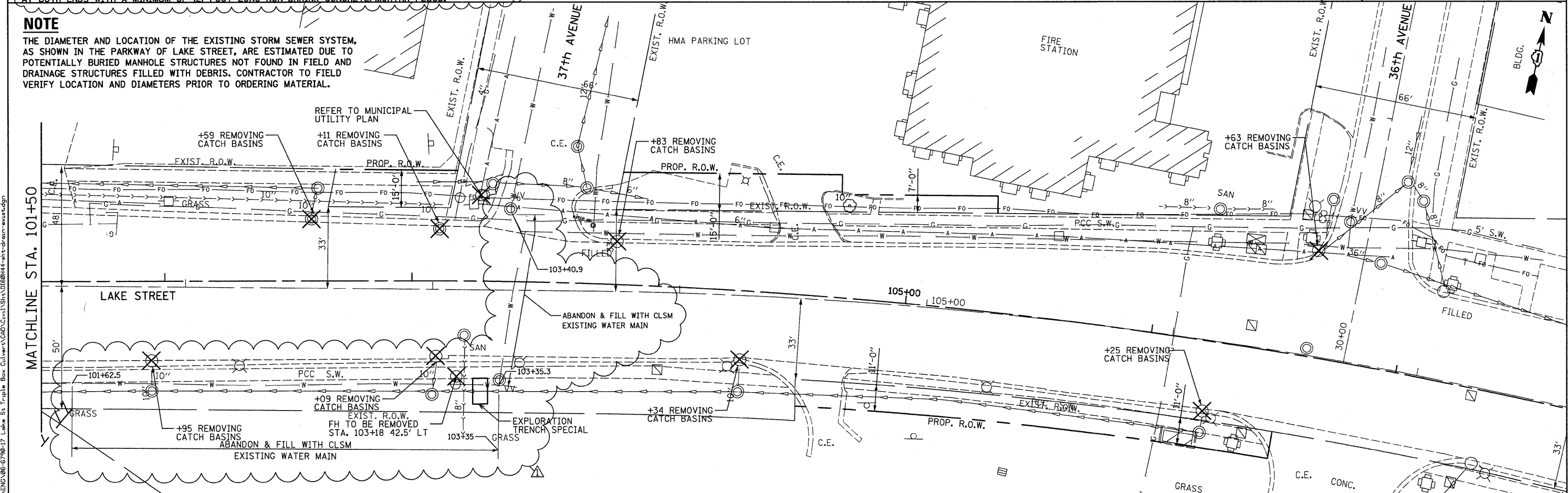
ANY ABANDONED PIPE SHALL BE FILLED WITH CONTROLLED LOW STRENGTH MATERIAL (CLSM) AND PLUGGED AT BOTH ENDS WITH A MINIMUM OF (2) FOOT LONG NON-SHRINK CONCRETE/MORTAR PLUGS.

LEGEND

UTILITY PIPE REMOVAL

NOTE

THE DIAMETER AND LOCATION OF THE EXISTING STORM SEWER SYSTEM, AS SHOWN IN THE PARKWAY OF LAKE STREET, ARE ESTIMATED DUE TO POTENTIALLY BURIED MANHOLE STRUCTURES NOT FOUND IN FIELD AND DRAINAGE STRUCTURES FILLED WITH DEBRIS. CONTRACTOR TO FIELD VERIFY LOCATION AND DIAMETERS PRIOR TO ORDERING MATERIAL.



FILE NAME = G:\ENR\06-6798-17 Lake St. Triple Box Culvert\CAD\Civil\Sheet\1584\1584.dwg



USER NAME = #USER#	DESIGNED - KAC	REVISED -
PLOT SCALE = #SCALE#	DRAWN - TMF	REVISED -
PLOT DATE = 4/11/2011	CHECKED - KAC	REVISED -
	DATE - 1/12/2011	REVISED -

**STATE OF ILLINOIS
DEPARTMENT OF TRANSPORTATION**

UTILITY REMOVAL PLAN LAKE STREET OVER ADDISON CREEK	
SCALE: 1" = 20'	SHEET NO. 1 OF 1 SHEETS
STA. 96+40	TO STA. 106+68

F.A.U. RTE. 3537	SECTION 3264-T	COUNTY COOK	TOTAL SHEETS 110	SHEET NO. 24
CONTRACT NO. 60H44				
[ILLINOIS] FED. AID PROJECT				