

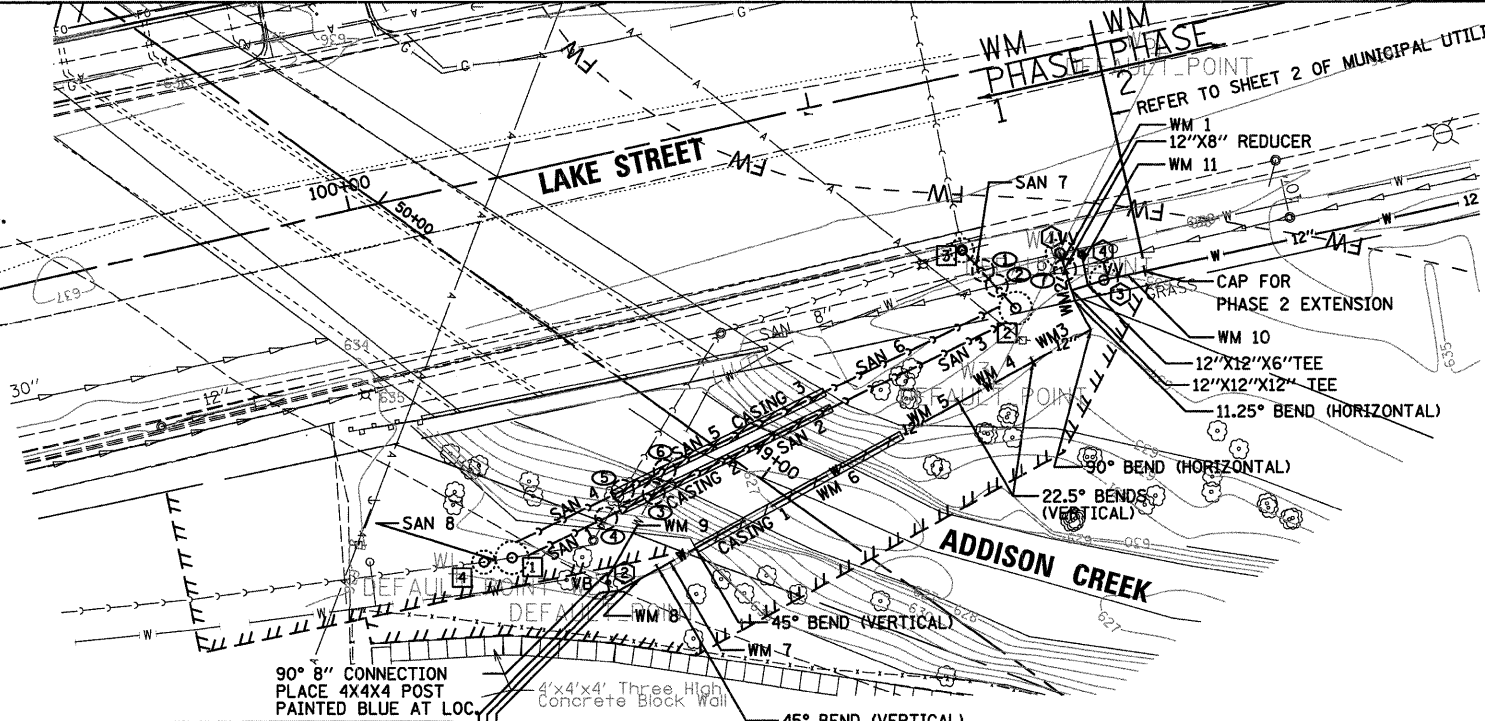
INSTALLATION NOTES

PRIOR TO BOX CULVERT CONSTRUCTION, PROPOSED WATER MAIN (PHASE 1) AND PROPOSED SANITARY SHALL BE INSTALLED AND OPERATIONAL.

THE PROPOSED WATER MAIN (PHASE 1) SHALL BE INSTALLED AND OPERATIONAL PRIOR TO THE INSTALLATION OF THE PROPOSED SANITARY SEWER.

SANITARY FLOWS SHALL BE MAINTAINED AT ALL TIMES.

- A) PRESSURE CONNECTION @ WATER STRUCTURE ①
- B) INSTALL PHASE 1 WATER MAIN & THE TEMPORARY FLUSHING HYDRANT OR BLOW-OFF VALVE OR OTHER VILLAGE APPROVED FLUSHING MECHANISM.
- C) PERFORM TESTING ON INSTALLED WATER MAIN
- D) FLUSH AND CHLORINATE INSTALLED WATER MAIN
- E) VILLAGE TO ISOLATE EXISTING 8" MAIN
- F) CAP EXISTING LINE TO WEST OF ①
- G) CONNECT TO EXISTING WATER MAIN WITH 90° ELBOW
- H) VILLAGE TO TURN WATER SYSTEM ON
- I) REMOVE / ABANDON & FILL SPECIFIED WATER MAIN WITHIN PHASE 1 AREA
- J) INSTALL PROPOSED SANITARY SYSTEM



UTILITY CROSSINGS

- T/ = TOP OF UTILITY
B/ = BOTTOM OF UTILITY
- ① B/EX. WM = 629.7±
T/10" SAN. = 627.36
VERTICAL SEPARATION = 2.34'±
REMOVE EX. WM
 - ② B/EX. STORM = 631.8±
T/10" SAN. = 627.38
VERTICAL SEPARATION = 4.42'±
 - ③ B/EX. WM = UNKNOWN
T/20" CASING = 622.30
B/20" CASING = 620.57
REMOVE EX. WM
 - ④ B/EX. SAN = 626.2±
T/10" SAN. = 621.77
VERTICAL SEPARATION = 4.43'±
REMOVE EX. SAN.
 - ⑤ B/EX. SAN. = 626.15±
T/STEEL CASING = 622.39
T/10" SAN. = 621.97
VERTICAL SEPARATION = 3.76±
REMOVE EX. SAN.
 - ⑥ B/EX. WM. = UNKNOWN
T/STEEL CASING = 622.32
T/10" SAN. = 621.91
REMOVE EX. WM
 - ⑦ B/EX STORM = 632.00±
T/8" WM = 630.50
VERTICAL SEPARATION = 1.5'±

SANITARY PIPE

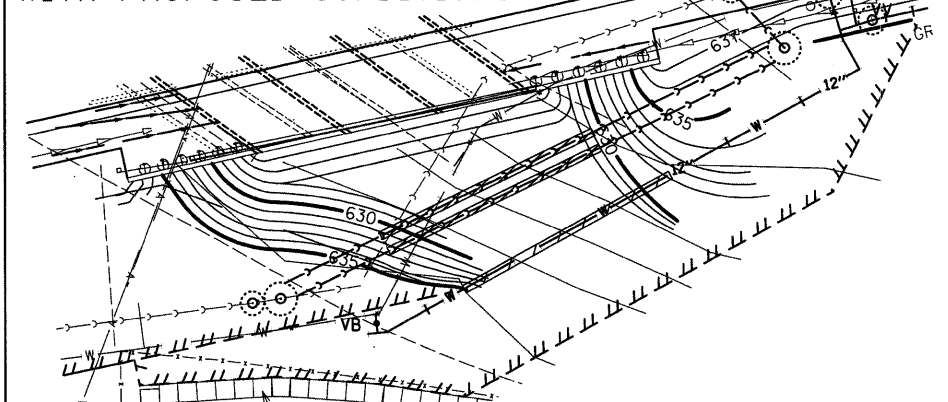
- SAN 1 - 22 LF SANITARY SEWER 8" CONCRETE ENCASEMENT @31.3%±
- SAN 2 - 52 LF SANITARY SEWER 8" IN STEEL CASING @0.64%
- SAN 3 - 44 LF SANITARY SEWER 8" CONCRETE ENCASEMENT @13.3%±
- SAN 4 - 22 LF SANITARY SEWER 10" CONCRETE ENCASEMENT @32.8%±
- SAN 5 - 52 LF SANITARY SEWER 10" IN STEEL CASING @0.64%
- SAN 6 - 44 LF SANITARY SEWER 10" CONCRETE ENCASEMENT @13.3%±
- SAN 7 - 17 LF SANITARY SEWER 10" @0.64%
- SAN 8 - 7 LF SANITARY SEWER 10" @0.7%± M.E. SLOPE & INVERTS

SANITARY STRUCTURES

- ① SANITARY MANHOLE, SPECIAL STA. 100+17.84, 79.06' RT RIM=635.50
W INV=628.6± M.E. (V.I.F.)
E INV=628.01 (8")
E INV=628.35 (10")
- ② SANITARY MANHOLE, SPECIAL STA. 101+33.83, 50.50' RT RIM=635.52
NW INV=626.55
W INV= 626.65 (10")
- ③ SANITARY MANHOLES, TYPE A, 4' DIAMETER STA. 101+25.33, 36.1' RT RIM=637.55
N INV=626.35± M.E.
S INV=626.45 (PERMANENT)
W INV=626.16± M.E. (TEMPORARY)
- ④ SANITARY MANHOLES, TYPE A, 4' DIAMETER WITH SLIDING GATE STA. 100+12, 78.7' RT RIM=635.6
INV=628.65± M.E.

*SLOPE BASED ON ELEVATION DIFFERENCE AT 22.5°

PROPOSED UTILITY RELOCATIONS PHASE 1 AREA WITH PROPOSED CONDITIONS



STEEL CASING PIPE

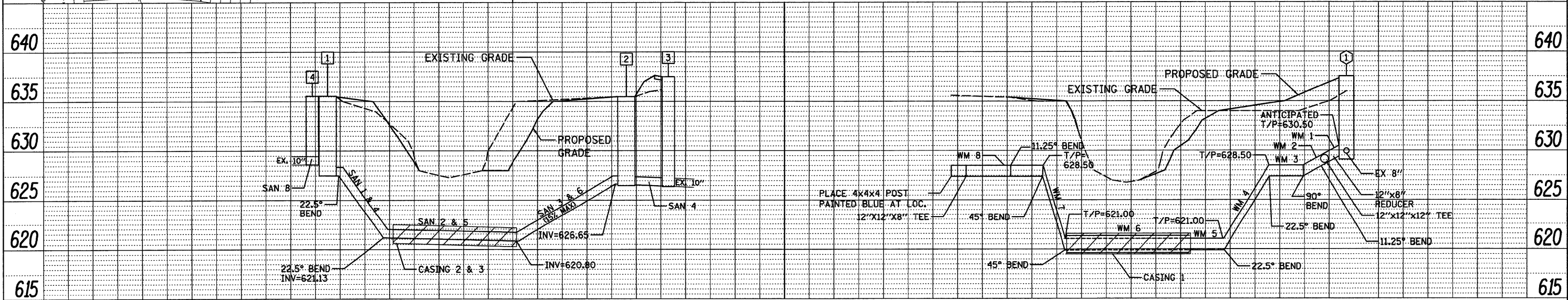
- CASING 1 - 50 LF STEEL CASING, 20" @0%
- CASING 2 - 50 LF STEEL CASING, 20" @0.64%
- CASING 3 - 50 LF STEEL CASING, 20" @0.64%

PHASE 1 - WATER STRUCTURES

- ① PRESSURE CONNECTION, 8"x8", VALVE VAULT, TYPE A, TYPE 1 FRAME, CLOSED LID, SPECIAL STA. 101+45.49, 41.3' RT RIM=637.52
- ② GATE VALVE, 8" W/ VALVE BOX STA. 100+36.60, 88.65' RT RIM=635.15
- ③ VALVE VAULT, TYPE A, TYPE 1 FRAME, CLOSED LID, SPECIAL W/ GATE VALVE, 12" STA. 101+53.38, 48.8' RT RIM=635.10
- ④ FIRE HYD W/ AUX V & VB STA. 101+49.93, 42.5' RT GROUND RING ELEV = 637.25

PHASE 1 - WATER MAIN

- WM 1 - 4 LF DUCTILE IRON WATER MAIN, 8"
- WM 2 - 14 LF DUCTILE IRON WATER MAIN, 12"
- WM 3 - 14 LF DUCTILE IRON WATER MAIN, 12"
- WM 4 - 20 LF DUCTILE IRON WATER MAIN, 12"
- WM 5 - 14 LF DUCTILE IRON WATER MAIN, 12"
- WM 6 - 50 LF DUCTILE IRON WATER MAIN, 12" IN STEEL CASING
- WM 7 - 9 LF DUCTILE IRON WATER MAIN, 12"
- WM 8 - 14 LF DUCTILE IRON WATER MAIN, 12"
- WM 9 - 4 LF DUCTILE IRON WATER MAIN, 8"
- WM 10 - 16 LF DUCTILE IRON WATER MAIN, 12"
- WM 11 - 7 LF DUCTILE IRON WATER MAIN, 6"



SANITARY PROFILE

SCALE H: 1"=20'
V: 1"=5'

WATER MAIN PROFILE

SCALE H: 1"=20'
V: 1"=5'

FILE NAME = G:\ENR\06-5798-17 Lake St Triple Box Culvert\CAD\Civil\Gr\1\Utility\Sanitary\Sanitary-Profile-12.mxd

DATE	
BY	
REVISION	
PLAN	

DATE	
BY	
REVISION	
PROFILE	



USER NAME = #USER#	DESIGNED - KB	REVISED -
	DRAWN - CEY	REVISED -
PLOT SCALE = #SCALE#	CHECKED -	REVISED -
PLOT DATE = 4/11/2011	DATE -	REVISED -

STATE OF ILLINOIS
DEPARTMENT OF TRANSPORTATION

MUNICIPAL UTILITY PLAN LAKE STREET OVER ADDISON CREEK		
SCALE: 1"=20'	SHEET NO. 1 OF 2 SHEETS	STA. 100+24 TO STA. 101+45

F.A.U. RTE. 3537	SECTION 3264-T	COUNTY COOK	TOTAL SHEETS 110	SHEET NO. 26
CONTRACT NO. 60H44				ILLINOIS FED. AID PROJECT

REVISD ENTIRE SHEET 4/11/11 KMB