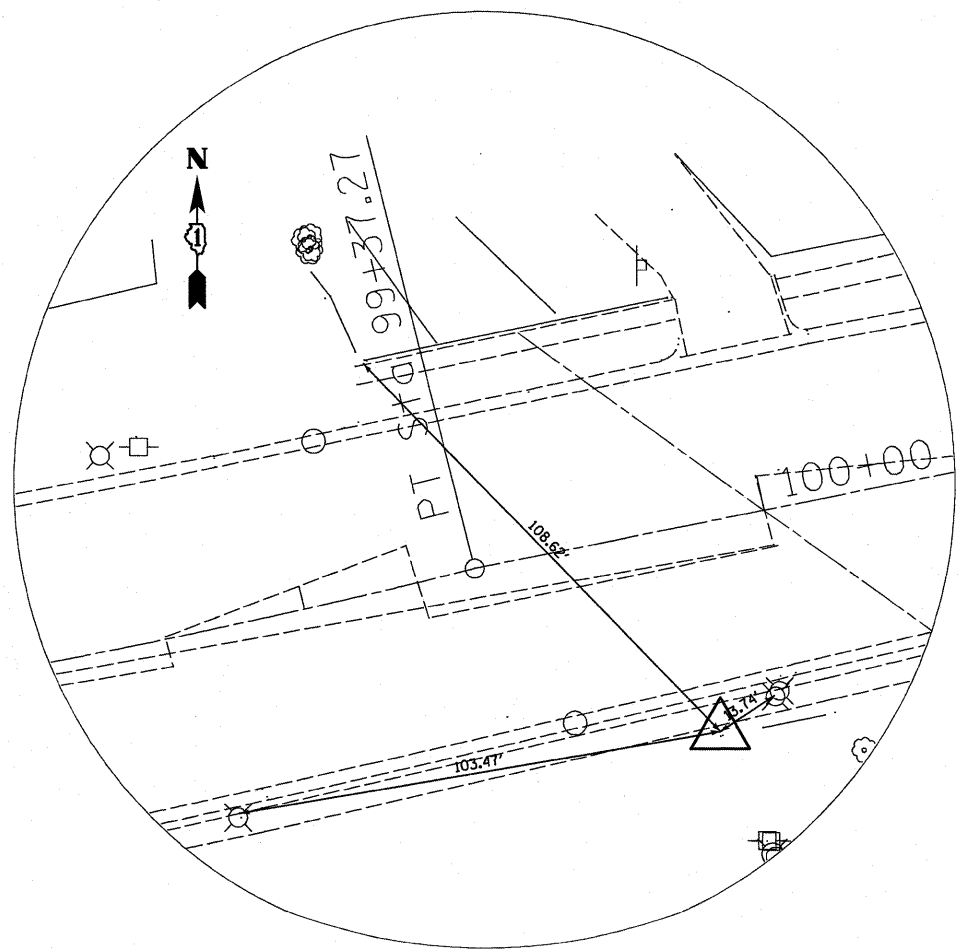
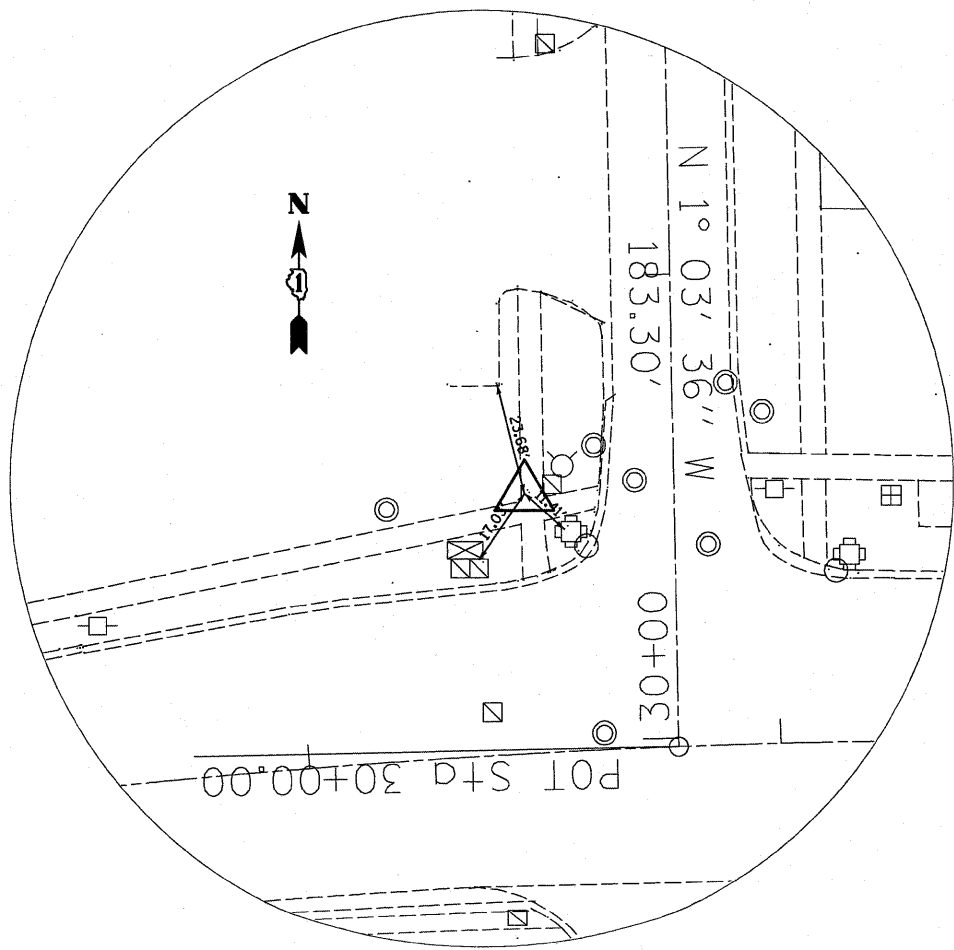


BENCHMARKS						
POINT	NORTH	EAST	ELEVATION	STATION	OFFSET	DESCRIPTION
			638.22			CHISELED SQUARE ON WEST END OF SOUTH HEADWALL S.N. 016-2007



CONTROL POINT #1



CONTROL POINT #2

FILE NAME = G:\ENR\06-6798-17 Lake St. Triple Box Culvert\CADD\Cv1\SHA\0168144-11-11-11.dgn



USER NAME = #USER#	DESIGNED - KAC	REVISED -
	DRAWN - TMF	REVISED -
PLOT SCALE = #SCALE#	CHECKED - KAC	REVISED -
PLOT DATE = 1/26/2011	DATE -	REVISED -

STATE OF ILLINOIS
DEPARTMENT OF TRANSPORTATION

ALIGNMENT, TIES, AND BENCHMARKS
LAKE STREET OVER ADDISON CREEK

SCALE 1" = 20' SHEET NO. 2 OF 2 SHEETS

F.A.J. RTE. 3537	SECTION 3264-T	COUNTY COOK	TOTAL SHEETS 110	SHEET NO. 15
			CONTRACT NO. 60H44	
ILLINOIS FED. AID PROJECT				