

GENERAL NOTES

Reinforcement bars shall conform to the requirements of ASTM A 706 Gr 60. See Special Provisions.

Reinforcement bars designated (E) shall be epoxy coated.

Layout of slope protection system may be varied to suit ground conditions in the field as directed by the Engineer.

Slipforming of the parapets is not allowed.

STATE OF ILLINOIS
DEPARTMENT OF TRANSPORTATION

**MINIMUM BAR LAP LENGTH
OF BARREL REINFORCEMENT**

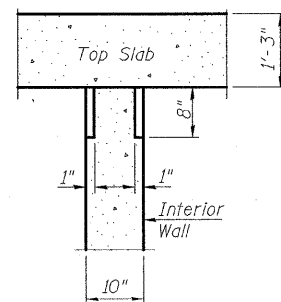
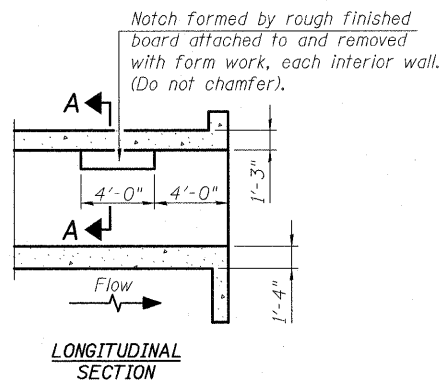
SIZE	LAP
#4	1'-4"
#5	1'-8"
#6	2'-0"
#7	2'-9"
#8	3'-8"
#9	4'-7"

TOTAL BILL OF MATERIAL

ITEM	UNIT	TOTAL
Porous Granular Embankment	Cu. Yd.	455
Stone Riprap, Class A5	Sq. Yd.	231
Filter Fabric	Sq. Yd.	231
Protective Coat	Sq. Yd.	31
Removal Of Existing Structures	Each	1
Structure Excavation	Cu. Yd.	939
Removal and Disposal of Unsuitable Material for Structures	Cu. Yd.	455
Concrete Structures	Cu. Yd.	62.6
Stud Shear Connectors	Each	648
Reinforcement Bars	Pound	285020
Reinforcement Bars, Epoxy Coated	Pound	10670
Bar Splicers	Each	220
Aluminum Railing, Type L	Foot	191
Name Plates	Each	1
Concrete Box Culverts	Cu. Yd.	730
Geocomposite Wall Drain	Sq. Yd.	66
Drilling & Setting Soldier Piles (In Soil)	Cu. Ft.	897
Drilling & Setting Soldier Piles (In Rock)	Cu. Ft.	2439
Untreated Timber Lagging	Sq. Ft.	1162
Furnishing Soldier Piles (W Section)	Foot	953
Pipe Underdrains For Structures, 4"	Foot	150
Temporary Soil Retention System	Sq. Ft.	2719
Temporary Support System	L. Sum	1

INDEX OF DRAWINGS

Sheet No.	Sheet Title
1	General Plan
2	General Notes and Bill of Material
3	Staging Details
4	Bottom Slab Reinforcement Plan
5	Top Slab Reinforcement Plan
6	Culvert Walls
7	Cross Section
8	Parapet Elevation
9	Wall A
10	Wall B
11	Wall C
12	Wall D
13	Wall Details
14	Bar Splicer Assembly and Mechanical Splicer Details
15	Aluminum Railing, Type L
16	Temporary Concrete Barrier for Stage Construction
17-19	Boring Logs



SECTION A-A
PHOEBE NESTING
SITE DETAILS
(Downstream End Only)

STATION 100+06.27
BUILT 20__ BY
STATE OF ILLINOIS
F.A.U. RT. 3537 SEC. 3264-T
LOADING HS20-44
STRUCTURE NO. 016-2630

NAME PLATE
See Std. 515001

**GENERAL NOTES AND BILL OF MATERIAL
STRUCTURE NO. 016-2630**

DESIGNED	MAS
CHECKED	BJM
DRAWN	MAS
CHECKED	BRT



Wight & Company
2500 North Frontage Road, Darien, IL 60561
630.969.7000 630.969.7979 fax
Design Firm Registration 184-000451

SHEET NO. 2 19 SHEETS	F.A.U. RTE. 3537	SECTION 3264-T	COUNTY COOK	TOTAL SHEETS 110	SHEET NO. 46
	CONTRACT NO. 60H44				
ILLINOIS FED. AID PROJECT					