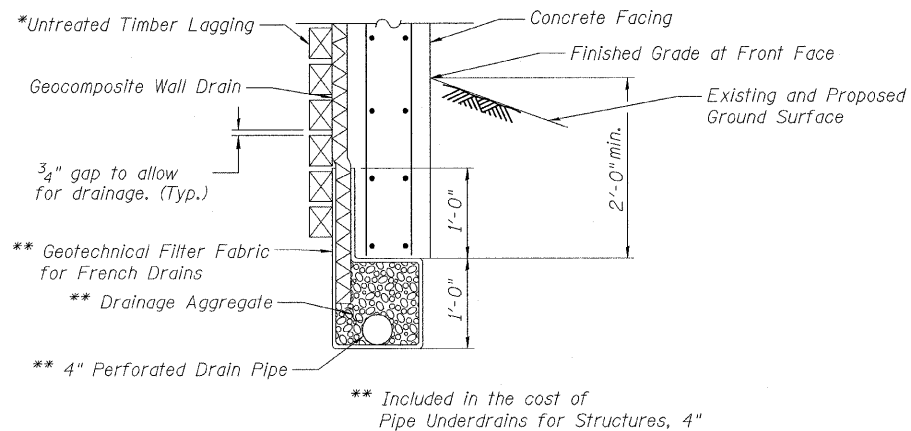
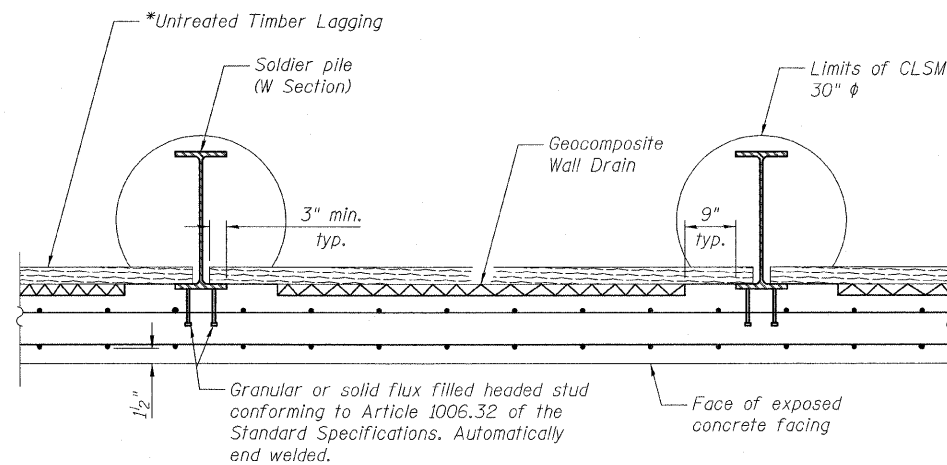


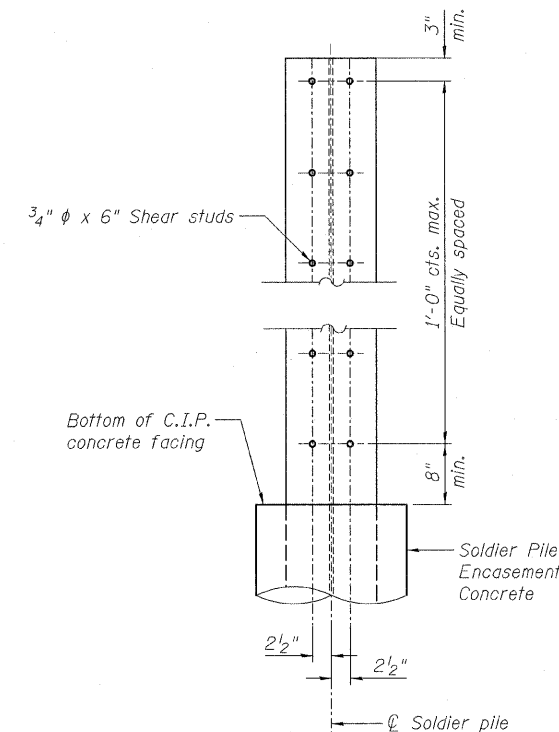
STATE OF ILLINOIS
DEPARTMENT OF TRANSPORTATION



PIPE UNDERDRAIN DETAIL

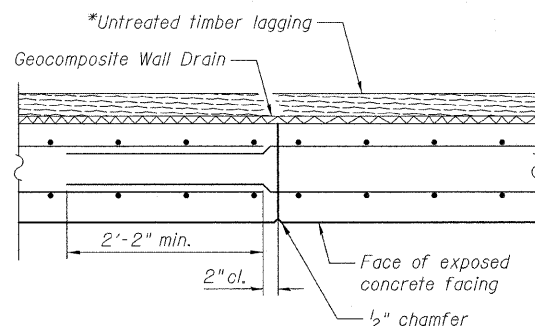


SECTION THRU SOLDIER PILE WALL

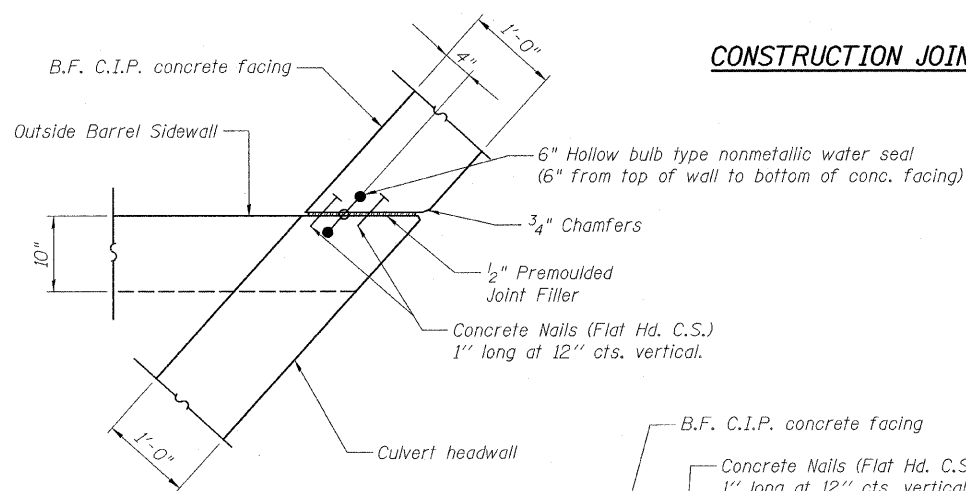


SHEAR STUD CONNECTION DETAIL

* The Contractor shall be responsible for the design and performance of the Untreated Timber Lagging using no less than a 3 in. nominal rough-sawn thickness and timber with a minimum allowable bending stress of 1000 psi.

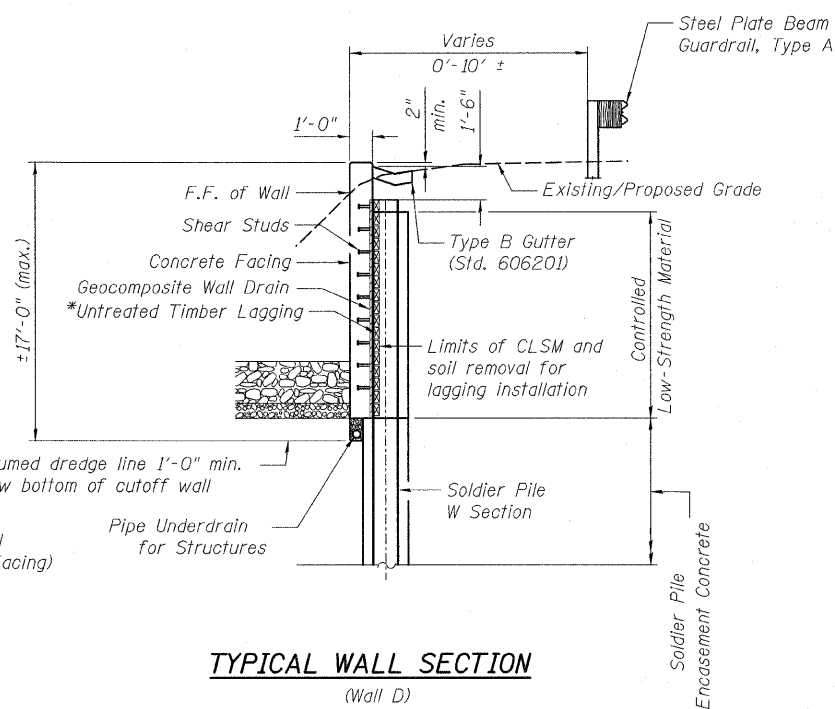


CONSTRUCTION JOINT DETAIL



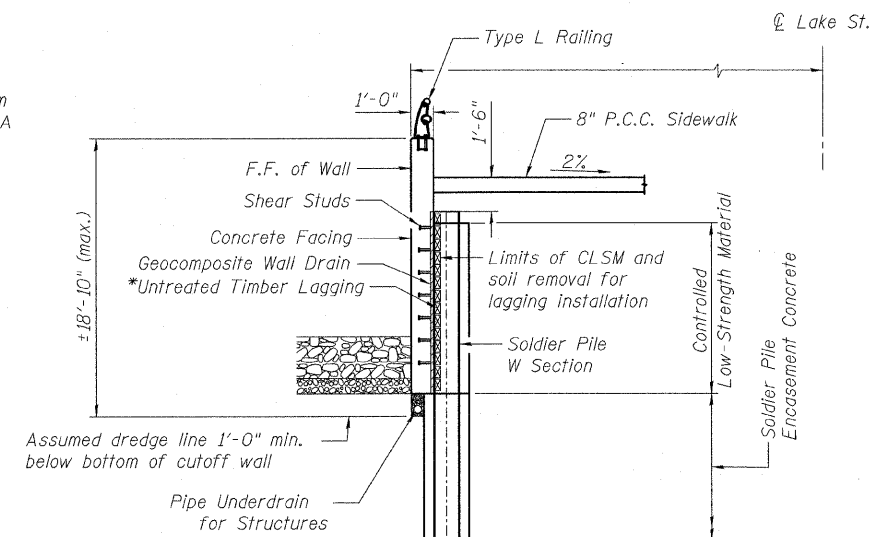
CORNER DETAIL

(Walls B & C shown.)
(Wall A Similar.)



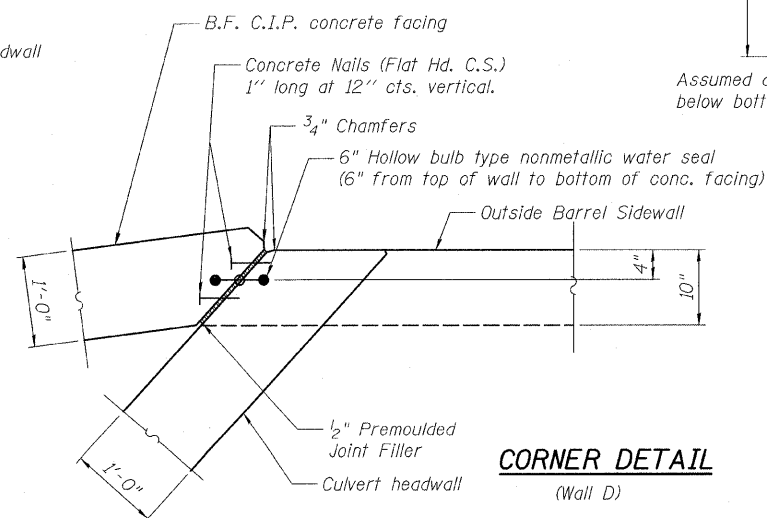
TYPICAL WALL SECTION

(Wall D)



TYPICAL WALL SECTION

(Walls A, B, & C)
(Existing grades not shown for clarity.)



CORNER DETAIL

(Wall D)

**WINGWALL DETAILS
STRUCTURE NO. 016-2630**

DESIGNED	JNH
CHECKED	BJM
DRAWN	MWS
CHECKED	BRT



Wight & Company
2500 North Frontage Road, Darien, IL 60561
630.969.7000 630.969.7979 fax
Design Firm Registration 184-000451

SHEET NO. 13 19 SHEETS	F.A.U. RTE. 3537	SECTION 3264-T	COUNTY COOK	TOTAL SHEETS 110	SHEET NO. 57
	CONTRACT NO. 60H44				
ILLINOIS FED. AID PROJECT					

3/17/2011 10:23:06 AM Default G:\ENG\06-6780-17 Lake St. Triple Box Culvert\CAD\Structures\Shk\0162630-60H44-013-WallDetails.dgn