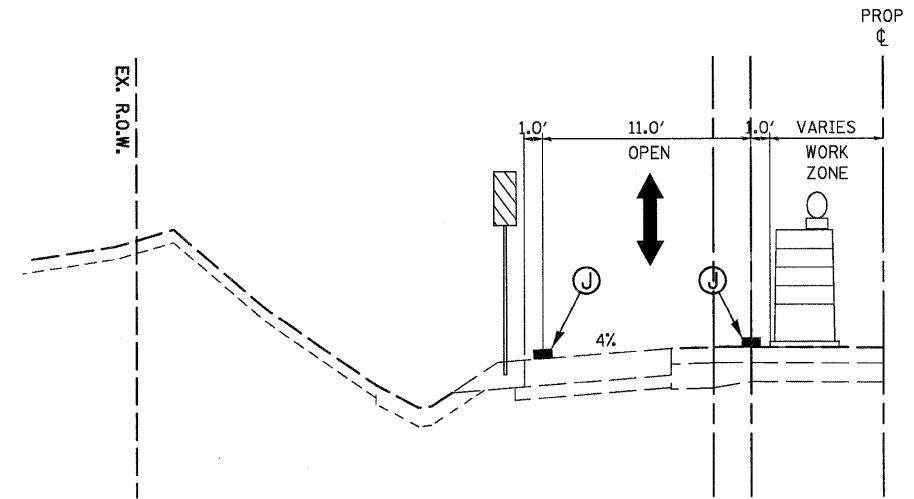


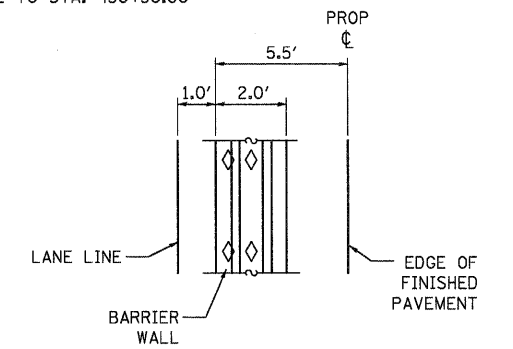
**STAGE 2
LANE CLOSURE**
STA. 432+40.1 TO STA. 437+87.0
STA. 444+75.0 TO STA. 449.30.1

STAGE 2 - MAJOR WORK ITEMS

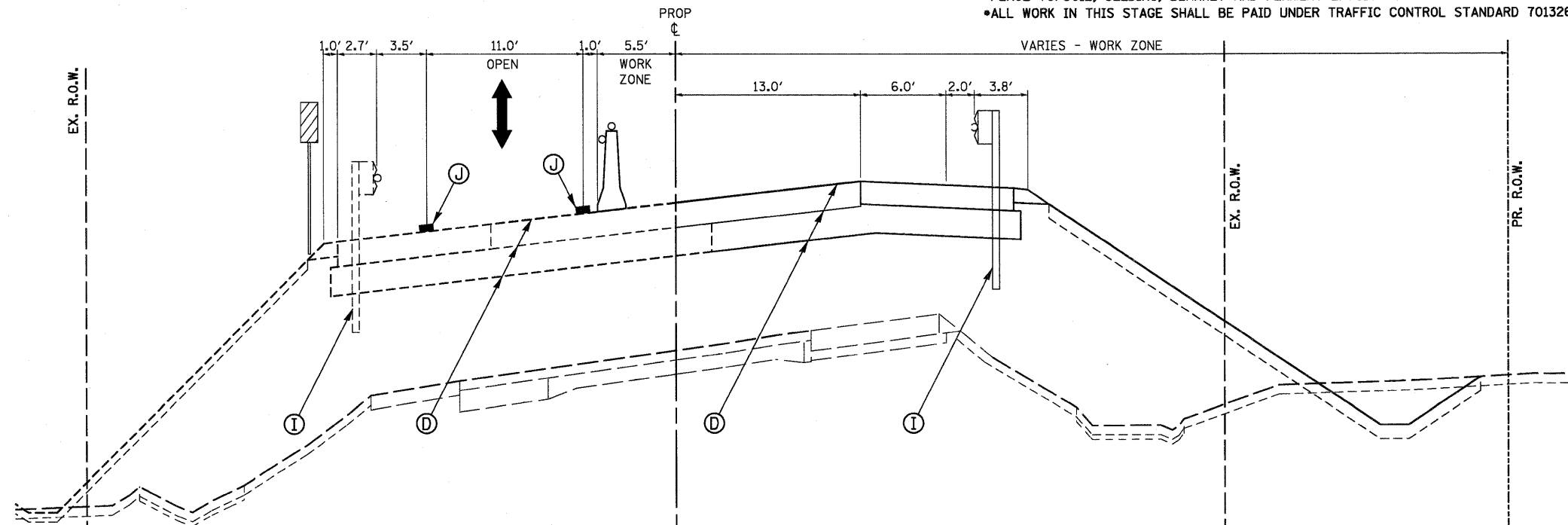
- PLACE STAGE 2 LANE SHIFT AND TRAFFIC CONTROL PLAN (SEE STAGE 2 MOT PLAN).
- RELOCATE AND PLACE TEMPORARY CONCRETE BARRIER WALL AND ATTENUATORS.
- RELOCATE AND PLACE TEMPORARY BRIDGE SIGNALS, MAINTAIN ROADWAY LIGHTING.
- REMOVE AND REPLACE BRIDGE STRUCTURE AND APPROACH SLABS RIGHT OF CENTERLINE.
- REMOVE ROADWAY PAVEMENT STA. 431+41.60 TO STA. 436+63.06 AND STA. 445+09.08 TO STA. 449+53.82.
- COMPLETE PAVEMENT BREAKING STA.436+06.06 TO STA. 440+51.27 AND STA 442+20.00 TO STA. 445+09.08.
- CONSTRUCT EMBANKMENTS, SUBGRADES AND AGGREGATE BASE COURSES STA. 431+41.60 TO STA. 445+09.08.
- REMOVE OR CUT SHEET PILING AFTER STAGE 2 SUBGRADE COMPLETE.
- CONSTRUCT PCC CONCRETE PAVEMENT AND SHOULDERS STA. 431+41.60 TO STA. 445+09.08.
- CONSTRUCT THE STEEL PLATE BEAM GUARD RAIL AND END TREATMENTS.
- PLACE TOPSOIL, SEEDING, BLANKET AND PERMENT EROSION CONTROL MEASURES RIGHT OF CENTERLINE.
- ALL WORK IN THIS STAGE SHALL BE PAID UNDER TRAFFIC CONTROL STANDARD 701326.



**STAGE 2 LANE CLOSURE
WITH 4% TEMP. PAVEMENT**
STA. 431+29.01 TO STA. 432+31.18
STA. 449+53.82 TO STA. 450+50.00



**STAGE 2
TRAFFIC CONTROL**



**STAGE 2
LANE CLOSURE - EASTBOUND**
STA. 437+87 TO STA. 440+86
BRIDGE OMISSION
STA. 442+83 TO STA. 444+75

LEGEND

- (A) EXIST. PAVEMENT STRUCTURE
- (B) EXIST. PAVEMENT AND SHOULDER STRUCTURE - TO BE REMOVED
- (C) EXIST. GUARDRAIL W/PROP. GUARDRAIL MARKERS
- (D) PROP. PAVEMENT STRUCTURE
- (E) PROP. HMA SURFACE COURSE
- (F) PROP. HMA SHOULDER/AGGREGATE BASE COURSE
- (G) PROP. AGGREGATE SHOULDER
- (H) PROP. AGGREGATE SUB-BASE
- (I) PROP. STEEL PLATE BEAM GUARDRAIL, TYPE A W/GUARDRAIL MKRS.
- (J) 8-1/2", TEMPORARY PAVEMENT W/4" AGGREGATE BASE COURSE
1 1/2" - HMA SURFACE COURSE, MIX "D", N50
7" - HMA BINDER COURSE, IL-19.0 (2 LIFTS)
(SEE HMA MIXTURE REQUIREMENTS, SHT. 7)
- (K) TEMPORARY SHEET PILING
- (L) AGGREGATE WEDGE SHOULDER, TYPE B
- (M) TEMPORARY PAVEMENT MARKING LINE
- (N) SAW CUT - FULL DEPTH
- (O) SHORT-TERM PAVEMENT MARKINGS
- (P) HMA SURFACE REMOVAL, 2"

FILE NAME = P:\CBBEL_MEST_Proj\ecta\2009\09-0147_IL173\G\vt1\Ugma\Shst\DI6012\st-ahf-mot-tup4.dgn

WILLS BURKE KELSEY ASSOCIATES LTD.
116 West Main Street, Suite 201
St. Charles, Illinois 60174
(833) 443-7755

USER NAME = #USER#	DESIGNED - SBP	REVISED -
PLOT SCALE =	DRAWN - NDP	REVISED -
PLOT DATE = 1/5/2011	CHECKED - PJF	REVISED -
	DATE - 12/14/10	REVISED -

**STATE OF ILLINOIS
DEPARTMENT OF TRANSPORTATION**

**MAINTENANCE OF TRAFFIC
STAGE 2 TYPICAL SECTIONS**

SCALE: SHEET NO. 23 OF 106 SHEETS STA. TO STA.

F.A. RTE.	SECTION	COUNTY	TOTAL SHEETS	SHEET NO.
303	132 B-2	McHENRY	106	23
CONTRACT NO.60129				
FED. ROAD DIST. NO. ILLINOIS FED. AID PROJECT				