

**GENERAL NOTES**

Reinforcement bars shall conform to the requirements of ASTM A 706 Gr 60. See Special Provisions.

Reinforcement bars designated (E) shall be epoxy coated.

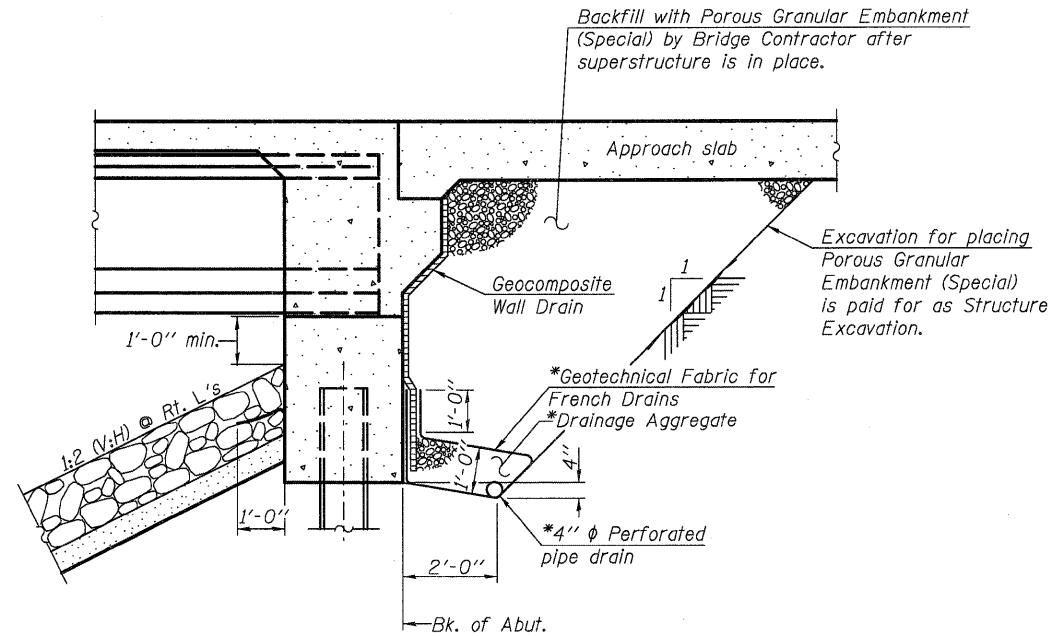
Layout of slope protection system may be varied in the field to suit ground conditions as directed by the Engineer.

The embankment configuration shown shall be the minimum that must be placed and compacted prior to construction of the abutments.

The Contractor is advised that the existing PPC Deck beams are in a deteriorated condition with reduced load carrying capacity. It is the Contractor's responsibility to account for the condition of the beams when developing construction procedures for the removal and replacement of the superstructure.

If the Contractor's procedures for existing deck beam removal involves placement of heavy equipment on the existing deck beams, a detailed procedure shall be submitted to the Engineer for approval. The procedure shall include calculations, sealed by an Illinois Licensed Structural Engineer, verifying the structural adequacy of the beams for the proposed loads. Cost included with Removal of Existing Structures.

Slipforming of the parapets is not allowed.



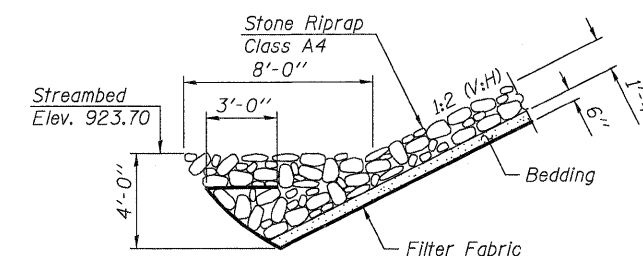
**SECTION THRU INTEGRAL ABUTMENT**  
(Horiz. dim. @ Rt. L's)

\*Included in the cost of Pipe Underdrains for Structures.

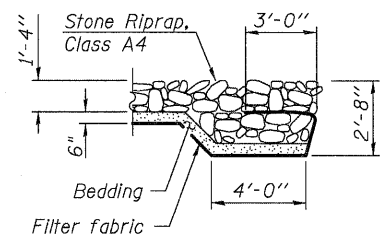
Note:  
All drainage system components shall extend to 2'-0" from the end of each wingwall except an outlet pipe shall extend until intersecting with the side slopes. The pipes shall drain into concrete headwalls. (See Article 601.05 of the Standard Specifications and Highway Standard 601101).

**TOTAL BILL OF MATERIAL**

ITEM	UNIT	SUPER	SUB	TOTAL
Stone Riprap, Class A4	Sq. Yd.		837	837
Filter Fabric	Sq. Yd.		837	837
Removal of Existing Structures	Each		1	1
Structure Excavation	Cu. Yd.		122	122
Concrete Structures	Cu. Yd.		63.7	63.7
Concrete Superstructure	Cu. Yd.	268.4		268.4
Bridge Deck Grooving	Sq. Yd.	626		626
Concrete Encasement	Cu. Yd.		6.2	6.2
Protective Coat	Sq. Yd.	724		724
Furnishing and Erecting PPC I-Beams, 54"	Foot	516.5		516.5
Reinforcement Bars, Epoxy Coated	Pound	57,580	13,650	71,230
Bar Splicers	Each	530	116	646
Furnishing Steel Piles HP 12x53	Foot		888	888
Driving Piles	Foot		888	888
Test Pile Steel HP 12x53	Each		2	2
Name Plates	Each	1		1
Geocomposite Wall Drain	Sq. Yd.		104	104
Porous Granular Embankment, Special	Cu. Yd.		202	202
Asbestos Bearing Pad Removal	Each	52		52
Temporary Sheet Piling	Sq. Ft.		1,238	1,238
Pipe Underdrains for Structures, 4"	Foot		130	130



**SECTION A-A**



**SECTION B-B**

STATION 441+30  
BUILT 201 BY  
STATE OF ILLINOIS  
F.A.P. RT. 303 SEC. 132 B-2  
LOADING HL-93  
STRUCTURE NO. 056-0091

**NAME PLATE**  
See Std. 515001

FILE NAME = PACBBEL\_MEST\_Projects\_2009\09-01\17\_IL173\_Structural.dgn 02560091-60129-002-Cen-056.dgn

**WBK** WILLS BURKE KELSEY ASSOCIATES LTD.  
116 West Main Street, Suite 201  
St. Charles, Illinois 60174  
(630) 443-7756

USER NAME =	DESIGNED - MLH	REVISED -
FILE NAME =	CHECKED - AEU	REVISED -
PLOT SCALE =	DRAWN - MLH	REVISED -
PLOT DATE =	CHECKED - AEU	REVISED -

**STATE OF ILLINOIS  
DEPARTMENT OF TRANSPORTATION**

**GENERAL DATA**  
**STRUCTURE NO. 056-0091**  
SHEET NO. 2 OF 22 SHEETS

F.A.P. RTE.	SECTION	COUNTY	TOTAL SHEETS	SHEET NO.
303	132B-2	McHENRY	106	47

CONTRACT NO. 60129  
ILLINOIS FED. AID PROJECT