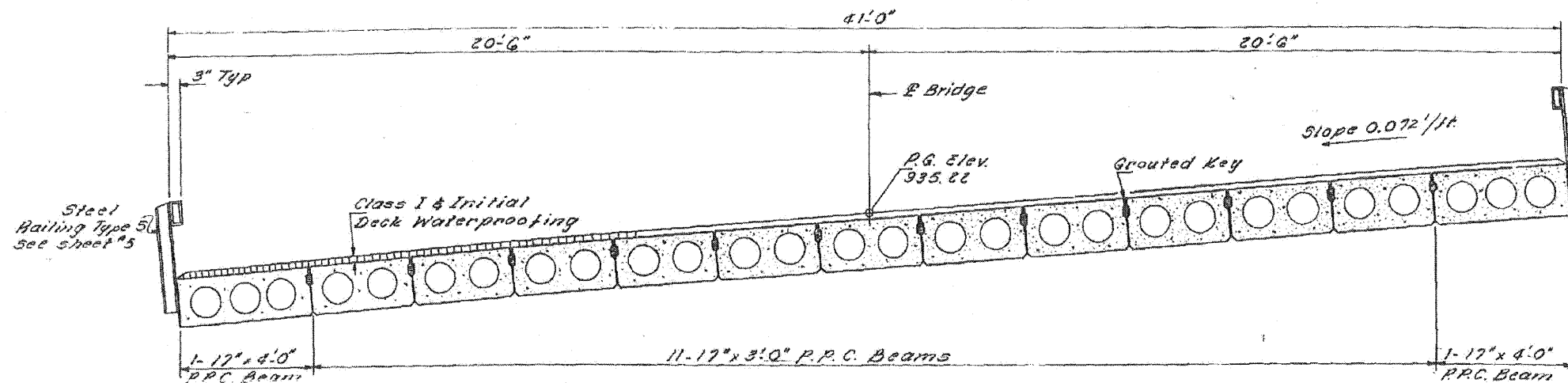
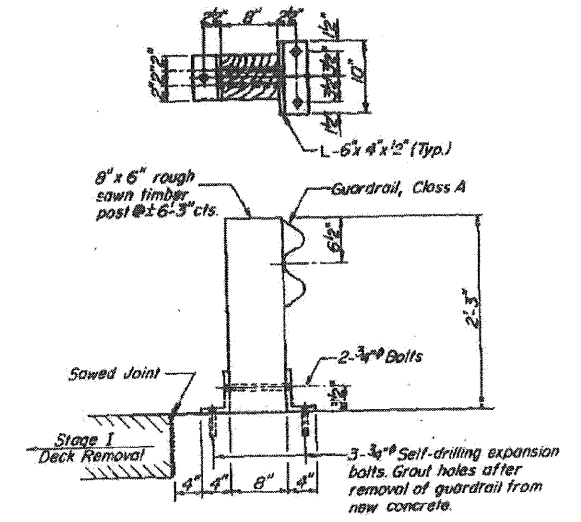


STATE OF ILLINOIS  
DEPARTMENT OF TRANSPORTATION

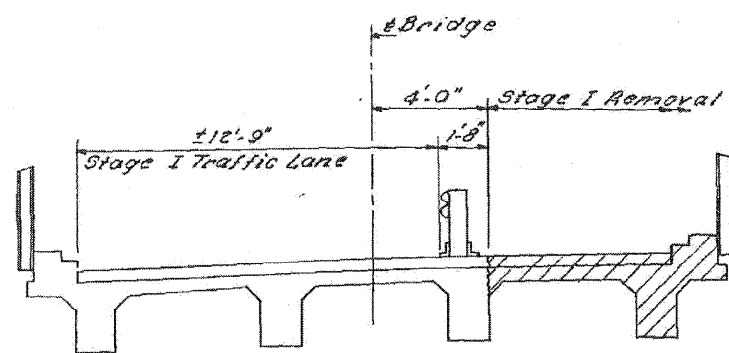
PROJECT NO.	SECTION	COUNTY	TOTAL SHEETS	SHEET NO.	SHEET NO. 2
A.S. 1 P.A. 202	132 B-2 RS-1	McHENRY	217	62	14 SHEETS
FED. ROAD DIST. NO. 7	STATION	FED. AID PROJECT			



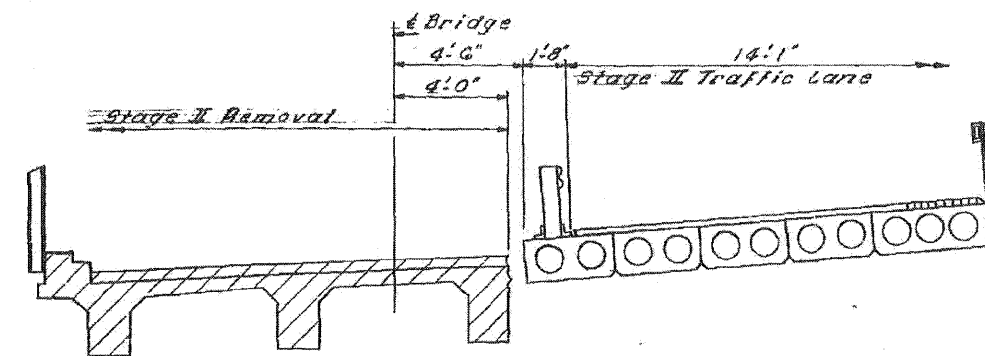
**CROSS SECTION**  
= (Looking East)



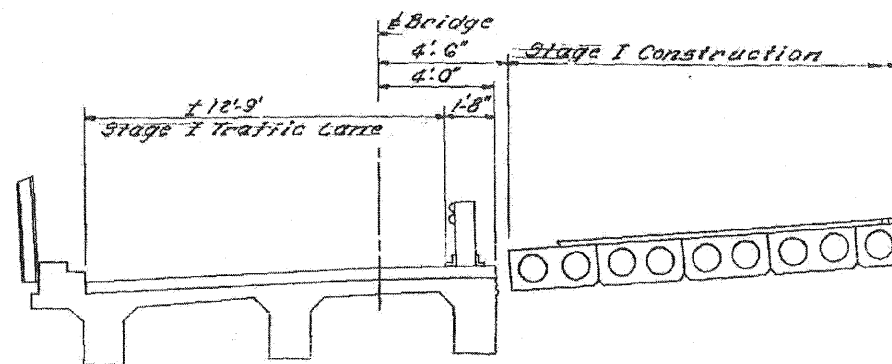
**TEMPORARY GUARDRAIL DETAIL**  
See Special Provisions



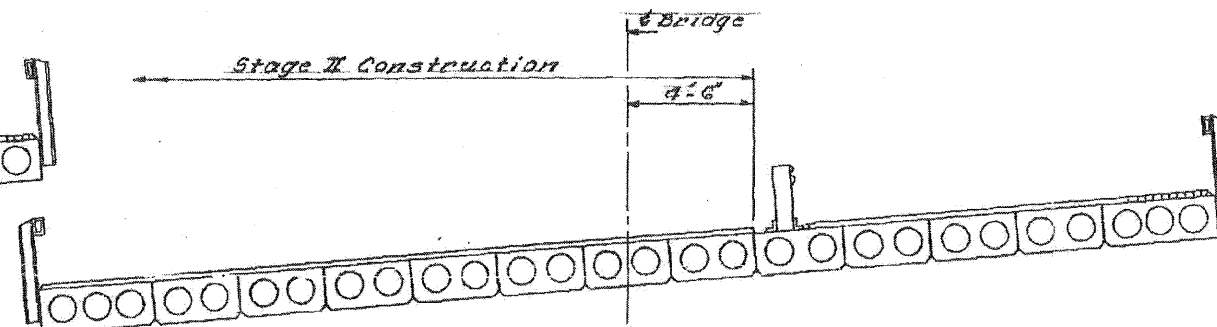
**STAGE I REMOVAL**



**STAGE II REMOVAL**



**STAGE I CONSTRUCTION**



**STAGE II CONSTRUCTION**

DESIGNED <i>Parkhill S. Co.</i>	EXAMINED <i>[Signature]</i>
CHECKED <i>D. J. Ryan</i>	PASSED
DRAWN <i>J. Kessler</i>	APPROVED
CHECKED <i>D. R. PSL</i>	

SEPT 19 1973

SHORT SECRETARY, CHIEF TRANSPORTATION ENGINEER

**STAGE CONSTRUCTION & SUPERSTRUCTURE DETAILS**  
**SECTION 132 B-2**  
**McHENRY COUNTY**  
**STATION 661+00.00**

FILE NAME = PACBBEL\_MEST\_P\projects\2009\AP-9147\_11173\civil\09\SH\A\160129-akt-01.dgn

EXISTING STRUCTURE PLANS - FOR REFERENCE ONLY

<b>WILLS BURKE KELSEY ASSOCIATES LTD.</b> 116 West Main Street, Suite 201 St. Charles, Illinois 60174 (630) 443-7755	USER NAME = #USER# DESIGNED - DRAWN - CHECKED - PLOT DATE = 1/5/2011	REVISIONS REVISION - REVISION - REVISION - DATE = 12/14/10	STATE OF ILLINOIS DEPARTMENT OF TRANSPORTATION	EXISTING STRUCTURE PLANS FOR REFERENCE ONLY	SCALE: SHEET NO. 69 OF 106 SHEETS STA. TO STA.	F.A.P. RTE. 303 SECTION 132 B-2 COUNTY McHENRY TOTAL SHEETS 106 SHEET NO. 69 CONTRACT NO. 60129 FED. ROAD DIST. NO. ILLINOIS FED. AID PROJECT
---	--	--	---	--	--	--