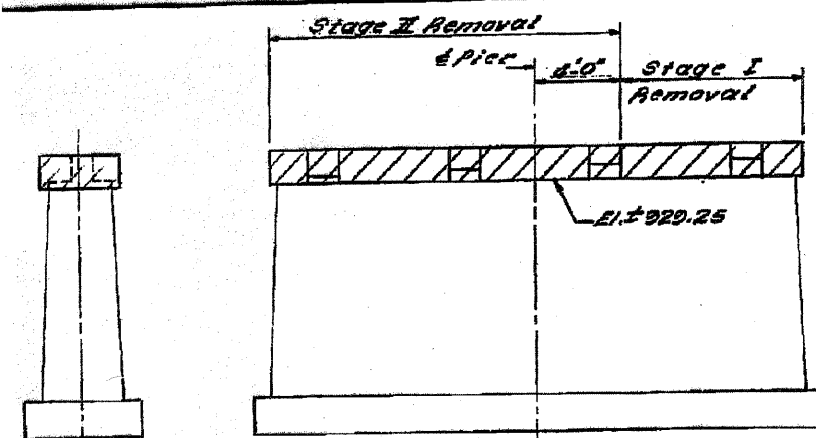


STATE OF ILLINOIS
DEPARTMENT OF TRANSPORTATION

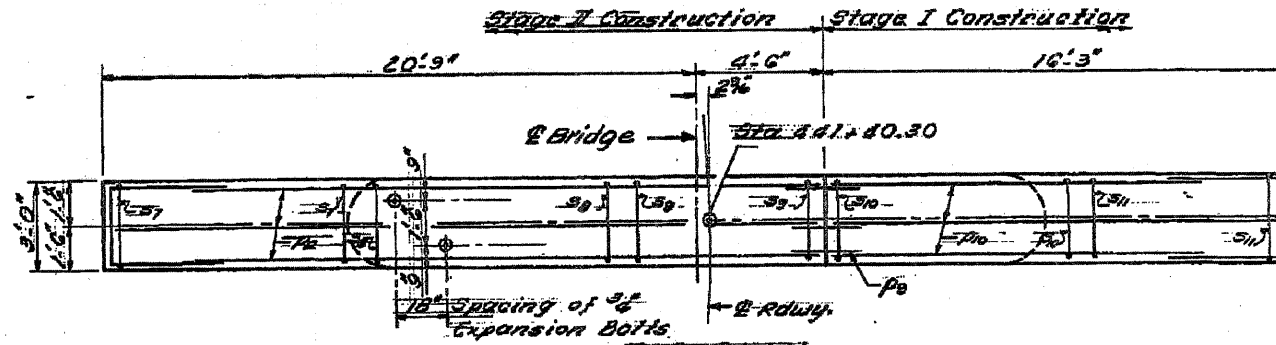
PROJECT NO.	SECTION	COUNTY	TOTAL SHEETS	SHEET NO.
A.A. 1324 P.A. 207	R2-1	McHENRY	217	72
SHEET NO. 12 14 SHEETS				



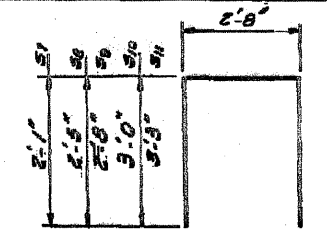
END VIEW

ELEVATION

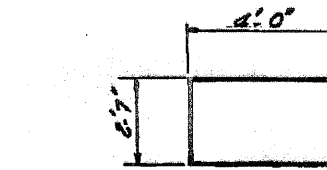
Existing Pier (Hatched area indicates concrete Removal)



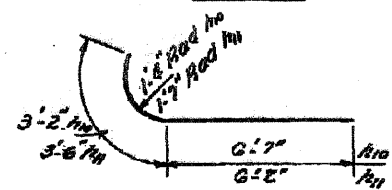
TOP PLAN



BAR #1 thru #5



BAR #4

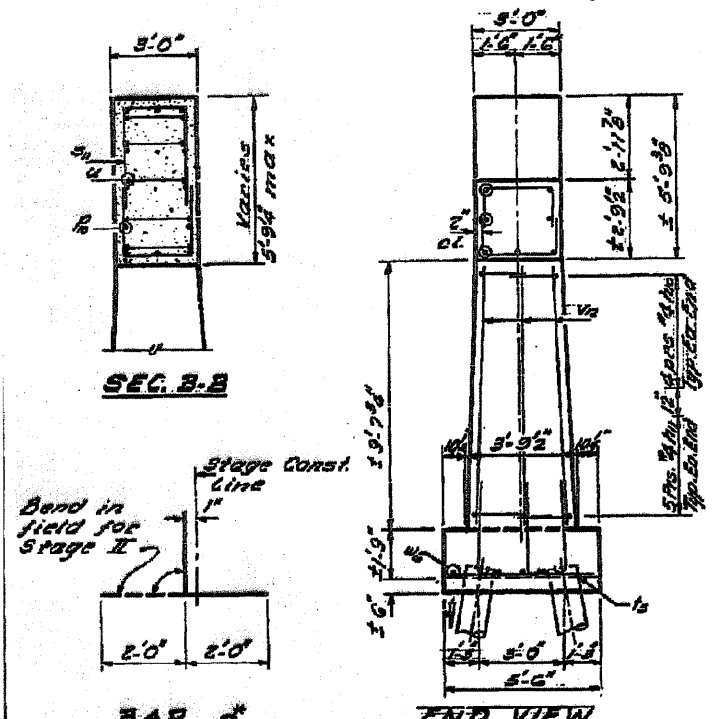


BAR #6 thru #11

BAR #12

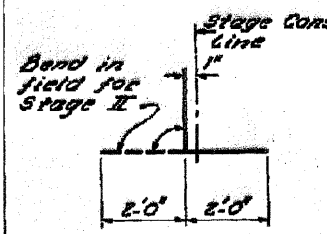


BAR #13



SEC. B-B

END VIEW

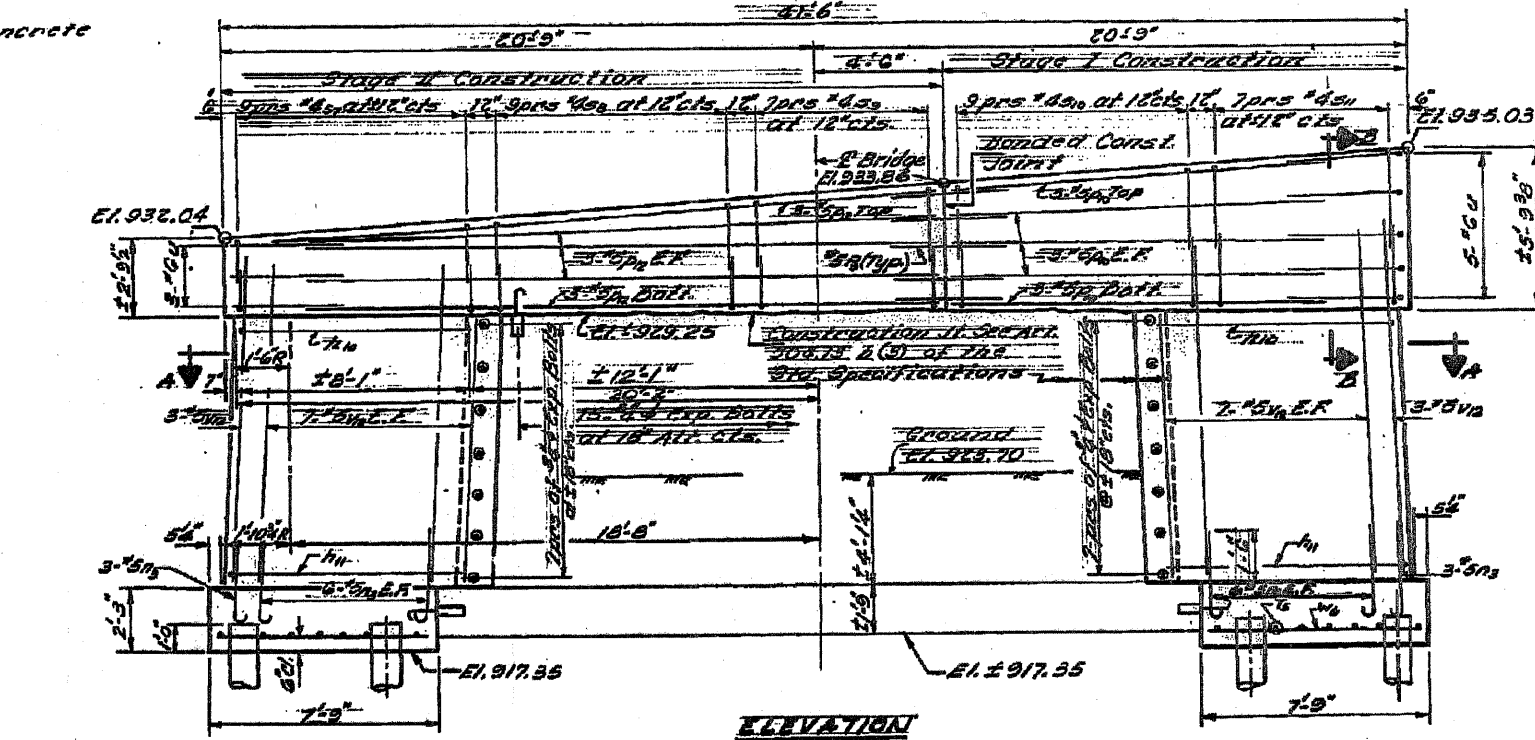


BAR #

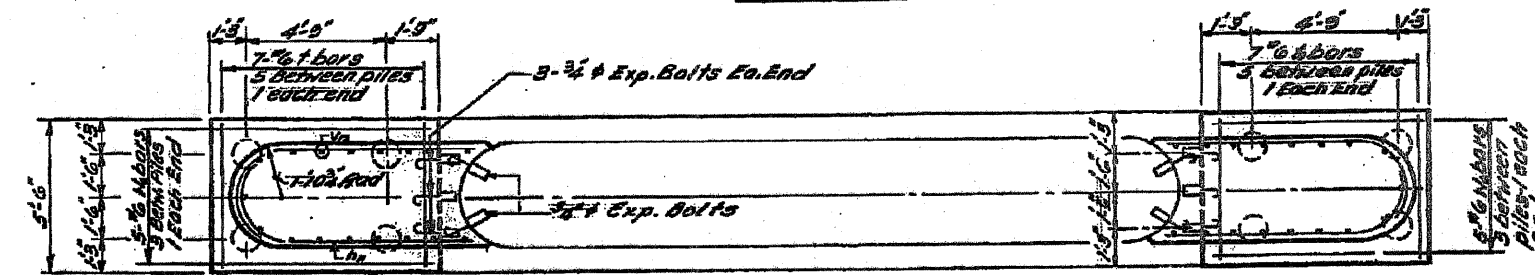
* Bars shall conform to the requirements of A.S.T.M. A-615 or A-617, except the min. yield strength shall not be less than 33000 psi nor more than 45000 psi

PILE DATA

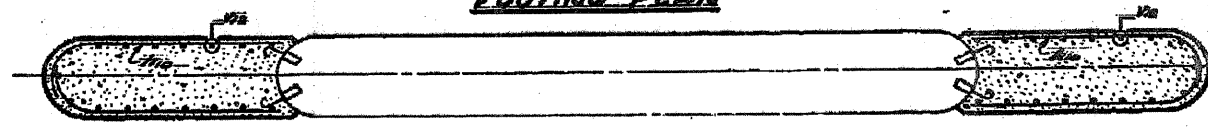
Type: Concrete
Capacity: 30 Ton
Tot. Lgh: 20 Ft.
No. Piles: 7+1 Test Pile



ELEVATION



FOOTING PLAN



SEC. A-A

Note
Expansion bolts shall be anchored in sound concrete
All exposed edges shall have standard chamfers
except as noted.

BILL OF MATERIAL

Bar No	Size	Length	Shape
#10	#4	3'-9"	C
#11	#4	3'-6"	C
#12	#5	3'-2"	C
#13	#5	2'-5"	C
#14	#5	4'-0"	C
#15	#5	13'-3"	C
#16	#5	2'-5"	C
#17	#5	6'-5"	C
#18	#5	6'-5"	C
#19	#5	9'-2"	C
#20	#6	3'-5"	C
#21	#6	13'-7"	C
#22	#6	11'-6"	C
#23	#6	7'-6"	C
Reinforcement Bars 1200			
Formwork Concrete 2100			
Expansion Bolts 600			
Concrete Removal 100			
Concrete Piles 1400			
Test Piles Concrete 1			

DESIGNED: Richard S. L...
CHECKED: D.A.R...
DRAWN: J.K...
CHECKED: D.A.R... P.S.L.

EXAMINED: [Signature]
PASSED: [Signature]
APPROVED: [Signature]

DATE: SEPT 13 1973

EXISTING STRUCTURE PLANS - FOR REFERENCE ONLY